

SOCIETY NEWS

Christian Church Missionary Group Gives Musical Tea

One of the most interesting musical events in the local church circles this season took place Saturday afternoon when the Missionary society of the Christian church of Christ entertained at a musical tea. About 50 guests gathered during the afternoon and were presided by Mrs. J. D. Smith and Mrs. Anna Voss.

The rooms were attractively decorated with many bouquets of spring wild flowers, gathered and arranged by Mrs. A. P. Nelson. Pink and white was the color scheme used.

The program was one of unusual interest and was enthusiastically received. The Miller violin ensemble played "Rondo" by Green and "Concord Waltz" by Vorn. The ensemble consists of Mrs. Florence Lynch Miller, Mrs. Georgia Stringham Smith, Mrs. Roy Parry, Mrs. Andrew Anderson and Miss Nellie Pratt, with Mrs. Leo Reynolds as piano accompanist.

A group of vocal numbers were given by Mrs. Ray Fuller, accompanied by Mrs. E. L. Holmes. The numbers were "Cherry Boughs" by Mary Turner Sulter, "Lost Home" by Kramer and "Morning" by Boyd. Miss Emma Melchior played a piano solo by Grieg.

Mrs. J. H. Caldwell gave two readings, "A Classical Parson" and "A Volunteer Organist." A women's quartet, consisting of Mrs. L. B. Parry, Mrs. Walter Price, Mrs. Dallas Green and Mrs. George L. Anderson sang "Don't You Cry Me Honey."

Mrs. George L. Anderson and Mrs. Parry, under direction of the fra. table, during the social, which followed the program. Refreshments served were carried out in the pink and white color scheme in keeping with the decorations.

Mr. and Mrs. W. B. Starmer, who have just recently moved into their new home on Jackson avenue, were the inspiration for a surprise party Monday evening, when 40 of their friends gathered there for a social. Games, music and readings were enjoyed during the evening, after which refreshments were served.

Mr. and Mrs. Starmer were presented with two small rings by their friends.

The evening closed with prayer, offered by E. A. Sayre, after which the guests departed, wishing the young couple every happiness in their new home.

La Grande Couple Married in South

A marriage of interest to many La Grande people, was solemnized at Palo Alto, Cal., Sunday when Miss Gertrude Seranton, daughter of Mr. and Mrs. Claude Seranton, formerly of this city, and Iloke Smith, also of La Grande, were united in marriage.

Word of the marriage was received here yesterday by relatives of Mr. Smith and Miss Seranton.

Mr. and Mrs. Smith will make California their home for the present.

ELGIN (Special)—The sixteenth annual alumni association banquet was held Friday evening at the Masonic hall. E. R. McCormick was toastmaster and the welcome to the graduates was given by Bud Smith, Kermit Myers responding. Stella Bendishoff gave a toast and the Rev. D. E. Nourse spoke. Ball and other of the various classes was also a feature.

The hall was decorated in a red and white color scheme. The ladies' improvement club had charge of the banquet.

After the banquet there was a business meeting, when Eugene Carter was elected president of the association, Bessie Bunnings, vice president, and Mrs. Nellie Crankbank, secretary-treasurer.

Miss Barbeau Is Bridge Hostess

Miss Madeline Barbeau entertained at bridge last evening, seven of her friends being her guests. Two tables were in play. Miss Verla Rae Smith making high score and the consolation prize going to Miss Isabelle Miller.

The rooms were attractively decorated with baskets of lilies. A two-course luncheon following the evening's games.

Miss Isabelle Miller will be hostess to the same group of girls next Wednesday evening, June 1.

OUT OUR WAY

Mr. L. H. Brainwell was hostess at a luncheon at 1:15 o'clock on Thursday afternoon, when members of the Jolly Bridge club were her guests. Red and white was the color scheme used to decorate the rooms, red tulips serving as centerpieces for the luncheon table.

Bridge was played at three tables following luncheon. Mrs. Lester Stoddard making high score. The second prize went to Mrs. H. G. Ayers.

Mrs. William Wilson will be the next hostess to the club Thursday June 2.

Music Pupils To Appear in Recital

An interesting musical program has been arranged for Wednesday evening of this week to take place in the Neighborhood club rooms in the library building, when a group of piano students of Mrs. Leo Reynolds and other and violin students of Mrs. Florence Lynch Miller will be presented in joint recital.

Sixteen music students will take part in the program, besides one number by the Miller violin ensemble. The ensemble will play "Famous Waltz" by Brahms and "Andante" from the Fifth symphony by Tschakowsky.

Other numbers on the program follow: "The Humming Bird" and "Five Belts" by Williams; Billie Chert; "The Grand Ride" and "Folk Tune" Margaret Mumford; "The Cuckoo" and "Lullaby," Dorothy Lee Reynolds; "The Tolly Ho Ride" by Dutton and "Cradle Song" by Von Wille; Billie Bakin; "The Swing Song" by Marsh; Gloria Henderson; "Ritard" by Burmeister and "Carnival Story" by Heller; Katherine Wessler; "I Meant to Do My Wash" by Dent Mowry and "Song of the Hill" by Russell; Juanita Spencer; "Barcarolle" by Schumann; "Air From Sonata in D" by Hayden; and "Farewell" by Burgmuller; Glenn Fox; "March" by Burgmuller; and "Valsecalle" by Fauré; Peggy Robinson; "Tango Serenata" by Simon and "Teresina" by Gualand; Georgia Stringham Smith; "La Bruyere" by Robert Dehne; Helena Moore; "Scherean" by Gold and "Melody in A" by Davies; Miriam Hanna; "The Two Roses" by Gilmer; and "I Passed by Your Window" by Bruns; Bethel Trill; "The Water Lily" by MacDowell and "Palace" by Hill; by Wainwright; Mrs. Clyde White; "Mother March" by Hall and "Souvenir" by Dreha; Irvin Zundell; Valse from "Chinese Suite" by Frital and "Prelude in G-Minor" by Rachmaninoff; Mildred Spencer.

The public is cordially invited to attend the program, which will begin at 8:15 o'clock.

Announcements

The Degree of Honor Protective association will meet this evening at 8 o'clock at English hall. All members are urged to be there.

The Woman's benefit association will meet this evening at 7:30 o'clock at the K. P. hall. All members are requested to attend an several matters of business will be taken up.

The Bible Searchers class of the First Presbyterian church will meet at the church parson Wednesday afternoon at 2:30 o'clock. Mrs. Robert Miller and Mrs. O. L. MacDowell will be hostesses. The members of Mrs. Turner Oliver's Sunday school class are invited as guests.

The Woman's Home Missionary society of the Methodist Episcopal church will meet Wednesday afternoon at 2:30 o'clock at the home of Mrs. Ed Heacock, 3102 O avenue. The annual site opening will be observed. An interesting program has been arranged for the afternoon. All members are requested to be present and to remember their gifts boxes.

VALENCIENNES, France—Lace makers of Valenciennes after two generations of idleness are again working in their cottage homes. Courses in the art of lace making by hand have been established in seven schools where girls are taught the old Valenciennes industry which was swept out of existence when the lace making machinery transferred the industry to Belgium.

MEMPHIS, Tenn.—A young girl, who has been crowned queen of the city, is considering the movies, and well she might.

UNHERALDED, almost unknown, little Mary Chu, dainty flapper of San Francisco's Chinatown, went to the recent festivities and was crowned queen of the Feast of the Lanterns. Now she is considering the movies, and well she might.

CHICAGO—Although she has held an ally commissioner of public welfare, Mary E. McDowell, at the age of 74, is returning to work in the social settlement she founded more than three decades ago in the Chicago stockyards district.

The aged social worker helped Jane Adams found Hull House, and later, with the aid of the University of Chicago, launched the settlement "back of the yards" which she has directed ever since. She left it only when she held the position of welfare commissioner for four years during Mayor Dever's incumbency.

An ordinary board crane is an aid in clearing a wood stove. It is convenient to keep it in the warming oven or any place near the stove.

What becomes of abandoned land? The Forest Service suggests that much of the poorer, so-called marginal land, which has proved unprofitable for cultivation, can be put to work growing profitable timber crops, under proper forestry practices.

Plum are easily regenerated or made to grow again on the same land both by natural means following right cutting and by artificial means of sowing the seed or setting out small seedling trees.

By Williams UNION GRADUATES GIVEN DIPLOMAS

Forty Seniors, Including Two Brides, End Term in High School

Union graduates following the address by Dr. A. B. Hall, president of the U. of O., L. C. Oakes, a member of the school board, handed out 40 high school diplomas, the largest number that has ever been given to any class graduating from the Union high school.

Following in the roster of the class, Eva Davis, Marjorie Chisham, Robert Crouter, Leo Crouter, Willie Davis, Marie Spain, Marie Smith, Guy Watts, Ruth Watts, Betty Matthews, Nellie Geoverson, Arnold Edvickson, Rutland Edvickson, Jack Kent, Vernal Nelson, Orlinda Ribbing, Lewis Jensen, Harold Stenoks, Murray Jensen, Susan Chadwick, J. E. Gilmore, Kenneth Miles, Katie Renter, Marjorie Blatt, Ralph Connor, Virgil Wilkinson, Zella Peterson, Sarah Halsey, Howard Halsey, Rex Baxter, Lester Brown, Eugene Ross, Helen Johnson, Edna Lounsbury, Ida Childers, Bart Soby, Edelyn Van Houten, Agnes Johnson, Roy Young, Marie Shaw.

The salutatory was given by Ralph Connor, and the salutatory by Katie Renter. Class poem, history, prospect, etc., were handled by committees from the senior class. These numbers and the class play, a three-act mystery drama, were given on Wednesday night to an audience numbering about a thousand. The play was pronounced one of the best ever given by a senior class.

Two Brides The graduating class this year honored two brides among its members, Marjorie Chisham having married Irvin Wolf a few weeks ago and Edelyn Van Houten was married some time ago to a La Grande man, Arthur G. Berry.

What becomes of abandoned land? The Forest Service suggests that much of the poorer, so-called marginal land, which has proved unprofitable for cultivation, can be put to work growing profitable timber crops, under proper forestry practices.

Plum are easily regenerated or made to grow again on the same land both by natural means following right cutting and by artificial means of sowing the seed or setting out small seedling trees.

Plum are easily regenerated or made to grow again on the same land both by natural means following right cutting and by artificial means of sowing the seed or setting out small seedling trees.

Plum are easily regenerated or made to grow again on the same land both by natural means following right cutting and by artificial means of sowing the seed or setting out small seedling trees.

Plum are easily regenerated or made to grow again on the same land both by natural means following right cutting and by artificial means of sowing the seed or setting out small seedling trees.

Plum are easily regenerated or made to grow again on the same land both by natural means following right cutting and by artificial means of sowing the seed or setting out small seedling trees.

Plum are easily regenerated or made to grow again on the same land both by natural means following right cutting and by artificial means of sowing the seed or setting out small seedling trees.

Plum are easily regenerated or made to grow again on the same land both by natural means following right cutting and by artificial means of sowing the seed or setting out small seedling trees.

Plum are easily regenerated or made to grow again on the same land both by natural means following right cutting and by artificial means of sowing the seed or setting out small seedling trees.

Plum are easily regenerated or made to grow again on the same land both by natural means following right cutting and by artificial means of sowing the seed or setting out small seedling trees.

Plum are easily regenerated or made to grow again on the same land both by natural means following right cutting and by artificial means of sowing the seed or setting out small seedling trees.

Plum are easily regenerated or made to grow again on the same land both by natural means following right cutting and by artificial means of sowing the seed or setting out small seedling trees.

Plum are easily regenerated or made to grow again on the same land both by natural means following right cutting and by artificial means of sowing the seed or setting out small seedling trees.

Plum are easily regenerated or made to grow again on the same land both by natural means following right cutting and by artificial means of sowing the seed or setting out small seedling trees.

Plum are easily regenerated or made to grow again on the same land both by natural means following right cutting and by artificial means of sowing the seed or setting out small seedling trees.

Plum are easily regenerated or made to grow again on the same land both by natural means following right cutting and by artificial means of sowing the seed or setting out small seedling trees.

Plum are easily regenerated or made to grow again on the same land both by natural means following right cutting and by artificial means of sowing the seed or setting out small seedling trees.

Plum are easily regenerated or made to grow again on the same land both by natural means following right cutting and by artificial means of sowing the seed or setting out small seedling trees.

Plum are easily regenerated or made to grow again on the same land both by natural means following right cutting and by artificial means of sowing the seed or setting out small seedling trees.

Plum are easily regenerated or made to grow again on the same land both by natural means following right cutting and by artificial means of sowing the seed or setting out small seedling trees.

Plum are easily regenerated or made to grow again on the same land both by natural means following right cutting and by artificial means of sowing the seed or setting out small seedling trees.

Plum are easily regenerated or made to grow again on the same land both by natural means following right cutting and by artificial means of sowing the seed or setting out small seedling trees.

Plum are easily regenerated or made to grow again on the same land both by natural means following right cutting and by artificial means of sowing the seed or setting out small seedling trees.

Plum are easily regenerated or made to grow again on the same land both by natural means following right cutting and by artificial means of sowing the seed or setting out small seedling trees.

By Williams UNION GRADUATES GIVEN DIPLOMAS

Forty Seniors, Including Two Brides, End Term in High School

Union graduates following the address by Dr. A. B. Hall, president of the U. of O., L. C. Oakes, a member of the school board, handed out 40 high school diplomas, the largest number that has ever been given to any class graduating from the Union high school.

Following in the roster of the class, Eva Davis, Marjorie Chisham, Robert Crouter, Leo Crouter, Willie Davis, Marie Spain, Marie Smith, Guy Watts, Ruth Watts, Betty Matthews, Nellie Geoverson, Arnold Edvickson, Rutland Edvickson, Jack Kent, Vernal Nelson, Orlinda Ribbing, Lewis Jensen, Harold Stenoks, Murray Jensen, Susan Chadwick, J. E. Gilmore, Kenneth Miles, Katie Renter, Marjorie Blatt, Ralph Connor, Virgil Wilkinson, Zella Peterson, Sarah Halsey, Howard Halsey, Rex Baxter, Lester Brown, Eugene Ross, Helen Johnson, Edna Lounsbury, Ida Childers, Bart Soby, Edelyn Van Houten, Agnes Johnson, Roy Young, Marie Shaw.

The salutatory was given by Ralph Connor, and the salutatory by Katie Renter. Class poem, history, prospect, etc., were handled by committees from the senior class. These numbers and the class play, a three-act mystery drama, were given on Wednesday night to an audience numbering about a thousand. The play was pronounced one of the best ever given by a senior class.

Two Brides The graduating class this year honored two brides among its members, Marjorie Chisham having married Irvin Wolf a few weeks ago and Edelyn Van Houten was married some time ago to a La Grande man, Arthur G. Berry.

What becomes of abandoned land? The Forest Service suggests that much of the poorer, so-called marginal land, which has proved unprofitable for cultivation, can be put to work growing profitable timber crops, under proper forestry practices.

Plum are easily regenerated or made to grow again on the same land both by natural means following right cutting and by artificial means of sowing the seed or setting out small seedling trees.

Plum are easily regenerated or made to grow again on the same land both by natural means following right cutting and by artificial means of sowing the seed or setting out small seedling trees.

Plum are easily regenerated or made to grow again on the same land both by natural means following right cutting and by artificial means of sowing the seed or setting out small seedling trees.

Plum are easily regenerated or made to grow again on the same land both by natural means following right cutting and by artificial means of sowing the seed or setting out small seedling trees.

Plum are easily regenerated or made to grow again on the same land both by natural means following right cutting and by artificial means of sowing the seed or setting out small seedling trees.

Plum are easily regenerated or made to grow again on the same land both by natural means following right cutting and by artificial means of sowing the seed or setting out small seedling trees.

Plum are easily regenerated or made to grow again on the same land both by natural means following right cutting and by artificial means of sowing the seed or setting out small seedling trees.

Plum are easily regenerated or made to grow again on the same land both by natural means following right cutting and by artificial means of sowing the seed or setting out small seedling trees.

Plum are easily regenerated or made to grow again on the same land both by natural means following right cutting and by artificial means of sowing the seed or setting out small seedling trees.

Plum are easily regenerated or made to grow again on the same land both by natural means following right cutting and by artificial means of sowing the seed or setting out small seedling trees.

Plum are easily regenerated or made to grow again on the same land both by natural means following right cutting and by artificial means of sowing the seed or setting out small seedling trees.

Plum are easily regenerated or made to grow again on the same land both by natural means following right cutting and by artificial means of sowing the seed or setting out small seedling trees.

Plum are easily regenerated or made to grow again on the same land both by natural means following right cutting and by artificial means of sowing the seed or setting out small seedling trees.

Plum are easily regenerated or made to grow again on the same land both by natural means following right cutting and by artificial means of sowing the seed or setting out small seedling trees.

Plum are easily regenerated or made to grow again on the same land both by natural means following right cutting and by artificial means of sowing the seed or setting out small seedling trees.

Plum are easily regenerated or made to grow again on the same land both by natural means following right cutting and by artificial means of sowing the seed or setting out small seedling trees.

Plum are easily regenerated or made to grow again on the same land both by natural means following right cutting and by artificial means of sowing the seed or setting out small seedling trees.

Plum are easily regenerated or made to grow again on the same land both by natural means following right cutting and by artificial means of sowing the seed or setting out small seedling trees.

Plum are easily regenerated or made to grow again on the same land both by natural means following right cutting and by artificial means of sowing the seed or setting out small seedling trees.

Plum are easily regenerated or made to grow again on the same land both by natural means following right cutting and by artificial means of sowing the seed or setting out small seedling trees.

Plum are easily regenerated or made to grow again on the same land both by natural means following right cutting and by artificial means of sowing the seed or setting out small seedling trees.

Plum are easily regenerated or made to grow again on the same land both by natural means following right cutting and by artificial means of sowing the seed or setting out small seedling trees.

Plum are easily regenerated or made to grow again on the same land both by natural means following right cutting and by artificial means of sowing the seed or setting out small seedling trees.

Plum are easily regenerated or made to grow again on the same land both by natural means following right cutting and by artificial means of sowing the seed or setting out small seedling trees.

Plum are easily regenerated or made to grow again on the same land both by natural means following right cutting and by artificial means of sowing the seed or setting out small seedling trees.

SPRING AND SUMMER HATS REDUCED Values to \$8.75 Your Choice, \$3.95 PUTMAN'S La Grande's Newest Store Exclusive Ready-to-Wear and Millinery

Liberty School Exhibit, Puppet Show Attracts GRANGE HALL, May 24 (Special)—Under the direction of Miss Mildred Stoddard, teacher here, Liberty school held an exhibition of school work and an entertainment Friday evening at Grange hall.

Hot Oats prepared faster now than plain toast OATS used to take a while to cook. Now they're ready in 2 1/2 to 5 minutes.

LOW FARES East SUMMER ESCURSION FARES IN EFFECT MAY 23 TO SEPT. 1. RETURN LIMIT OCTOBER 31, 1927

Hot Oats prepared faster now than plain toast OATS used to take a while to cook. Now they're ready in 2 1/2 to 5 minutes.

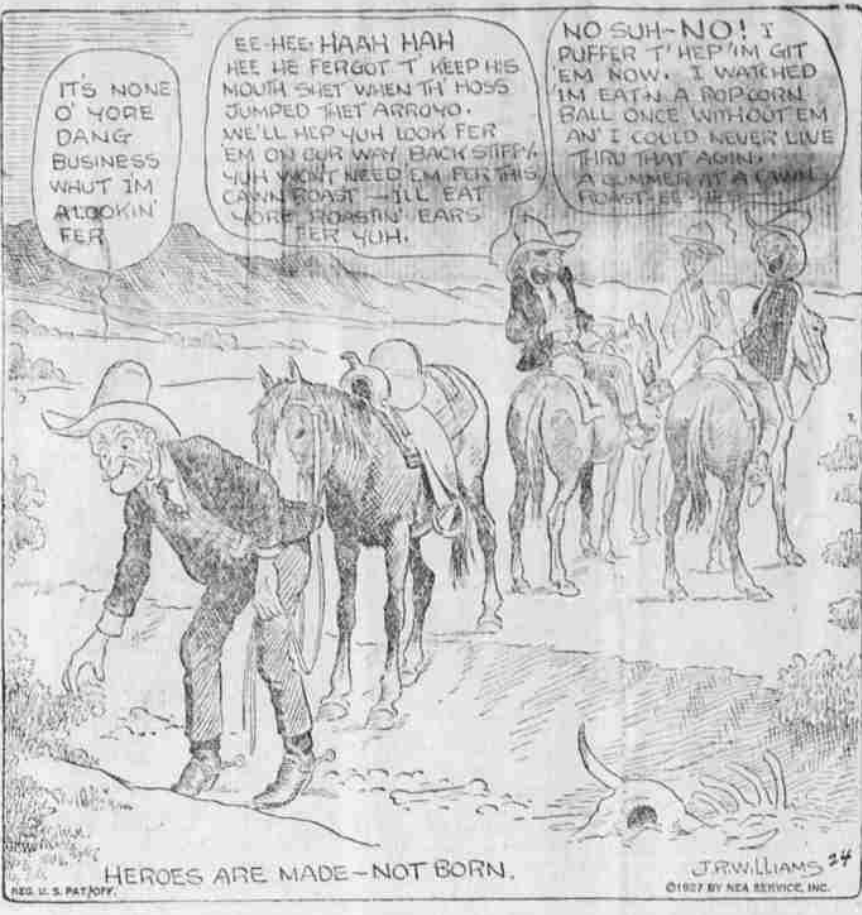
Quick Quaker Your grocer has Quick Quaker—also Quaker Oats as you have always known them.

Double the Life of Your Carpets! YOU NEED PAY ONLY AS LITTLE AS \$4.50 DOWN

KEEP your carpets thoroughly clean, and they will last twice as long. You can easily... with a Premier Duplex.

Send only 10c (stamps or coin) with this coupon and you will receive a copy of Ida Bailey Allen's wonderful new Book, attractively bound, containing 112 pages of unusual recipes.

Eastern Oregon Light & Power Co. Name Address Town State



MENUS

By Sister Mary BREAKFAST—Shredded fresh pineapple, cereal, cream, broiled cottage, ham, creamed potatoes, crisp toast, milk, coffee.

LUNCHEON—Cream of asparagus soup, croquette, sliced tomatoes, cream cheese sandwiches, vanilla cookies, milk, tea.

DINNER—Broiled lambing steak, twice-baked sweet potatoes, new cabbage with hot dressing, cream puff, vanilla ice cream, coffee.

New Cabbage With Hot Dressing Two cups very finely shredded cabbage, 2 tablespoons butter, 1/2 teaspoon salt, 1 tablespoon flour, 1/2 teaspoon ground mustard, 1 tablespoon sugar, 1/2 teaspoon pepper, 1/2 cup thin cream, 1/2 cup vinegar, 1 egg.

Stuffed butter pop, ribs in flour, onion, tomato and pepper. When perfectly smooth slowly add cream and stir until thick. Slowly add vinegar, stirring constantly. Bring to the boiling point and add egg well beaten. Cook until egg thickens sauce and stir in shredded cabbage. Mix thoroughly and heat enough to cook. Serve warm daily. The cabbage must be very finely shredded if the dish is to be as best. (Copyright, 1927, N.Y.S. Service, 1927.)

GEORGIA FEDERATION HAS MOUNTAIN SCHOOL ATLANTA—Far up in the mountains of north Georgia, the State Federation of Women's clubs has proved that women's organizations accomplish better more concrete than merely the passage of resolutions.

During the past 20 years it has operated the Tatum's Falls Industrial School for mountain boys and girls. Now one of the most modern schools in the entire state, it has grown from a single small cottage to a colony of eight buildings. It has 30 pupils and scholarship of \$2,000 each, and \$20,000 scholarship fund, \$50,000 in invested funds and more than 200 students.

Constantly gaining new supporters, the school has as its latest sponsor a group of Atlanta's younger married women who organized to give the school regular financial assistance.

An actress is writing "Memoirs of Hollywood." But that isn't billing!

Memorial Program Planned at Union

UNION, Ore., May 24 (Special)—Arrangements for the Memorial Day exercise are about complete, according to reports from the Women's Relief corps members who have the event in charge. There will be a short service at the Catholic creek bridge on Main street, a program at the high school gymnasium and another at the cemetery. It is planned for the American Legion, Civil and Spanish war veterans, national gardeners, and various civic orders to take part in the parade and services. The program will be in the afternoon, beginning about two o'clock.

A joint memorial service will be held at the Methodist church next Sunday, most of the churches of the town participating along with the W. R. C. and other civic orders.

FIRST CIVIL MARRIAGE FOR MOSLEM WOMAN CONSTANTINOPLE—Alche Zouhra Hanem, daughter of the aristocratic ex-senator Ali Hira Bey, of Stamboul, is the first Moslem woman to be married by the civil authorities. She married a wealthy Italian Christian Emilio Martelli.

Under the old Koranic law marriage between a Moslem woman and a Christian was absolutely taboo, although Moslem men were permitted to marry Christian women. The new Civil Code which went into application last fall eliminated this discrimination.

Alche Zouhra Hanem declares that American ideals have taught Turkish women how to live, dress and marry according to their own desires.

IT'S A BARGAIN A Chicago building collapsed during a bargain rush. It was jammed on a street, shoved against next door, but you couldn't get a jury that would convict a man who threw in a case like that. Some of the largest hardware dealers pay no attention when the walls tell on them. They only thought some woman had seen a \$10 parcel for sale of \$3.00 and was trying to get it. Some of the inexperienced bargain hunters were injured, but none of the seasoned vendors had scratches. It takes something heavier than a brick building to put a deal in a real bargain hunter.



—MAY, San Francisco Barren UNHERALDED, almost unknown, little Mary Chu, dainty flapper of San Francisco's Chinatown, went to the recent festivities and was crowned queen of the Feast of the Lanterns. Now she is considering the movies, and well she might.

THE OWL'S Theatrical Cold Cream A superior cream made from finest materials. It is better than soap and water for removing dust or make-up from the skin. Will not grow hair. One-Half Pound...50c One Pound...75c Moon Drug Co. Agents For The Owl Drug Co.

Sweater Comic If clothes have a psychological effect on one's disposition, surely this is the sweater to wear if an especially humorous mood is desired. Pink lightweight wool with a comic strip applique of deep red.



Southern Corn Bread 2 cups cornmeal 1 tablespoon Karo 2 tablespoons Argo 1 egg, well beaten or Kingford's Cornstarch 2 tablespoons Mazola 1 teaspoon salt 2 cups sour milk 1 scant teaspoon soda or buttermilk COMBINE the ingredients in the order enumerated. Beat well, pour into a medium sized dripping pan oiled with Mazola and bake thirty minutes in a hot oven, 375 degrees F.