



AUTOMOBILE NEWS



GRAHAMS WILL CONTINUE PAIGES

Brothers to Re-Enter the Automobile Field—Purchase Plans Given

Plans to place Paiges in the forefront of the automobile industry

are outlined by Robert C. Graham, representing the three Graham brothers who recently announced their plan for assuming control and management of the Paige-Detroit-Motor Car company.

At a meeting of the board of directors of the Paige company, May 7, a contract was entered into between the company and Messrs. Joseph H. Robert C. and Ray A. Graham, which contract, when ratified by the stockholders of the company, will place the controlling interest in, and the management of

the company to, the Graham brothers.

"We selected Paige to re-enter the motor car business," said Robert Graham. "First, because the present Paige line of eight and sixes are fine cars which represent outstanding motor car values. This line of cars will be continued on the market through present Paige dealers. The public may buy Paige products today with greater confidence than ever before because of the added strength of the new management.

"We are putting four million dollars into the Paige business, and will follow with an additional four million as the development and expansion of the business warrants. We will also devote to it our full time and energies. We have behind us twenty-five years of experience as manufacturers. We believe that success comes from building good goods efficiently and offering them to the public at fair prices. We are in the motor car business as manufacturers to stay.

"The present Paige plant, completed within the last three years, is thoroughly modern and ideally located. We intend to take full advantage of the opportunity for efficient manufacture. We will extend the facilities as the business develops."

J. B. Graham in Charge
Joseph B. Graham, who will be the new head of the Paige company, was president of Graham Brothers, and later vice president in charge of production of Dodge Brothers. He will give his full time to the development of the Paige company to a place in the forefront of the industry.

Robert C. Graham, who will be in general charge of Paige sales. He was formerly vice-president of Graham Brothers, and vice president in charge of sales of Dodge Brothers. He will devote his entire time to the development of the Paige business.

Ray A. Graham, who was secretary-manager of Graham Brothers and general manager of Dodge Brothers, will also be active in the Paige business, particularly on the financial side. He will also remain at the head of the Graham Brothers Corporation of New York City.

Retail Sales Of General Motors In April Large

Alfred P. Sloan Jr., president of General Motors, in a statement regarding the corporation's April sales, says:

"The retail sales by our dealers in April for the second successive month set a new high record for all time. The April sales by dealers to users were 150,106 cars, compared with

135,643 in April, 1926, and further with 97,242 in April, 1925.

"The April sales by our car divisions to dealers totaled 189,867 cars, compared with 122,742 in April, 1925, and 85,583 in April, 1926. This is also a new all time record and the second consecutive month during which this has been accomplished.

"These figures include passenger cars and trucks sold in the United States, Dominion of Canada and overseas by the Chevrolet, Pontiac, Oldsmobile, Oakland, Buick, LaSalle and Cadillac manufacturing divisions of General Motors."

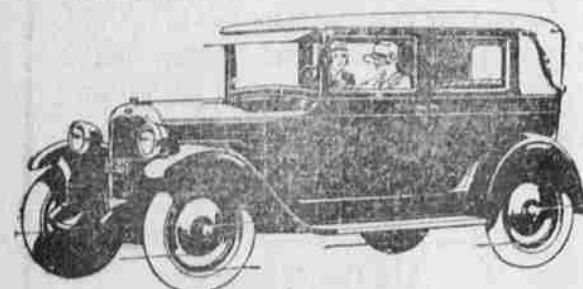
Few Cars Survive Elements of Time

Of the 645 automobiles of different manufacture, brought out in the United States since the beginning of the industry, only 55 are now being made.

Of the 324 different makes of trucks brought out in 1904, 106 remain.

The best laid plans of mice and men—are often upset by women.

Announcing—another Chevrolet Achievement



Imperial Landau

Specially-Built Fisher Body—Strikingly Beautiful Duo Colors—Elegantly Appointed

- The Touring \$525
 - The Roadster 525
 - The Coach 595
 - The Coupe 625
 - The Sedan 695
 - The Sport Cabriolet 715
 - The Landau 745
 - The Imperial Landau 780
 - 17-Ton Chassis 495
- All prices f.o.b. Flint, Michigan. Ballroom tires standard on all models.

Again Chevrolet revolutionizes every previous conception of quality and elegance in a low-priced automobile by presenting the Imperial Landau! Its specially-built Fisher body reveals all the masterly craftsmanship for which the Fisher name is famous. The finish is lustrous black Duco, with embellishments of brilliant chasseur red. And, of course, it has all the power, speed and smoothness—all the flashing acceleration, finger-tip steering and untiring dependability that have brought to Chevrolet such world-wide fame. This beautiful car is now on display in our showroom. Come and see it!

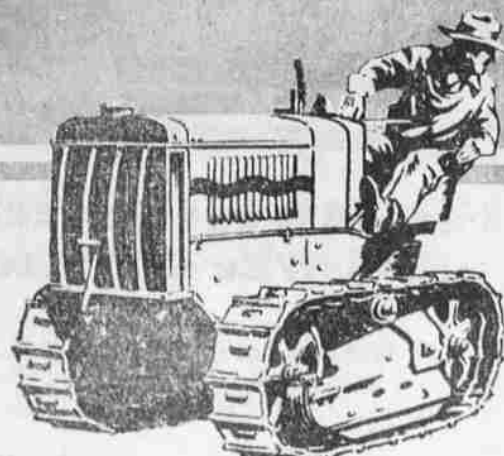
Check Chevrolet Delivered Prices. They include the lowest handling and financing charges available.

Blue Mountain Garage

M. A. HARRISON, Mgr.

Opposite Postoffice

QUALITY AT LOW COST



Do Your Work When The Soil Is Right

"CATERPILLAR" Tractors ask few favors of the weather—

Start work when the soil is right—finish before it dries out.

Plentiful power means fewer days in the field; plenty of traction means an early start after the rains—

BUNTING TRACTOR CO.

Jefferson and Elm Sts.
LA GRANDE, OREGON
Branch Offices at Boise and
Pocatello, Idaho



Tractor Sales Running High, Bunting Reports

Many tractor sales throughout the territory of the Bunting Tractor company have been reported by officials of the organization during the past week. Tractors were delivered to Harry Gelsler Farms, Fairfield, Ida., caterpillar 20; City of Pocatello, Idaho, caterpillar 60; U. S. Forest Service, Malheur national forest, John Day, Ore., caterpillar 2-Ton; Boise-Tay-

otte Lumber company, Boise, Ida., caterpillar 20; J. J. Hartvigson, Downey, Ida., caterpillar 2-Ton.

Heavy demands for caterpillar tractors had officials of the company to believe that sales will exceed their early estimates. According to C. W. Bunting, president, conditions throughout the new territory seem very favorable for continued brisk buying of both caterpillar tractors and Holt combined harvesters.

La Salle To Set Pace For Annual Memorial Classic

To the La Salle, the new companion car to Cadillac, goes the honor of pacing this year's Memorial Day automobile race at the Indianapolis Speedway.

The Indianapolis race is the outstanding automobile race classic. From the standpoint of race interest, attendance, and national-wide interest, averaged over its 12 years, this one big race event of the year. The honor of being chosen to provide a car to set as pace-maker and start the fleet of racing cars on their long grind is very eagerly sought for by automobile manufacturers, for in these days, the pace-maker at Indianapolis must have speed far above the average speedy car.

The LaSalle which will act as pace-maker this year is a roadster. It will be driven by "Big Boy" Rader. The Indianapolis Speedway is old familiar ground to Rader for he, himself, is a famous racer of the early school. He has participated in many notable events, won the big class at Sheepshead Bay on one occasion, and some of his records for dirt track and straight-away speed still stand.

The roadster which Rader will drive is one of the two LaSalle roadsters which have been making phenomenal speed records at the General Motors Proving Ground near Detroit. One of these roadsters, driven by Rader, has exceeded 94 miles per hour on the three and three-eighths miles concrete speed loop. In a stripped roadster Rader has attained the terrific speed of 105 miles per hour. This remarkable speed for a passenger automobile is all the more significant when it is remembered that the fastest average ever made by a winner of the Indianapolis race is 101.13 miles per hour.

Though the La Salle was not especially designed for speed, its wonderful power and efficiency of the 30-degree, V-type eight engine in this car, plus an extremely low center of gravity and scientific distribution of weight, has enabled it to break all speed records at the General Motors proving ground.

When the wife of the sheriff of Marshall county, Alabama, transferred three prisoners from the county jail to a hospital while she hid up their cells, they made their escape from a window on the third floor, using a rope made of blankets and anchored to an operating table.

WILLYS-KNIGHT

GETTINGS & HANKS

Cor. Fir and Jefferson

"3-year labor cost \$7.80"

This nation-wide trend toward Willys-Knight, resulting in enormously increasing sales, is based on public confidence and public appreciation—appreciation of Willys-Knight performance, safety and carefree operation.

- The Knight Engine**—Smoother, quieter, more powerful with every mile. The only type of engine that improves with use.
- 7-Bearing Crankshaft**—Of course!
- Skinner Rectifier**—Only way to prevent oil dilution.
- 4-Wheel Brakes**—Positive, mechanical—act in a flash.
- Ballflex Shackles**—Keep your chassis as quiet as the Knight Engine. No greasing or adjustment.
- Timken Bearings in Front Axle**—Easiest steering.
- Narrow Body Pillars at Windshield**—Clearer vision.
- Adjustable Front Seat**—Fits you perfectly.
- Light Control at Steering Wheel**—Lights dimmed without removing your hand from the wheel.
- Shock Absorbers**. Air cleaner. Thermostatic temperature control. Finest quality upholstery and interior fittings.

FEDERAL

Tires

Extra Value at No Extra Cost

You will find extra value in every one of the three style treads offered in our large fresh stock of Federal Tires. These tires are made by one of the oldest and largest makers in the country. We have every size and every type.

We Make Our Own Adjustments

No delay here about making good on guarantees. Adjustments are made by us on the spot. Another good reason why you should buy tires where you get extra service at no extra cost.

Jack Allen Supply Co.

La Grande Branch
1423 Adams

Authorized Distributors for
Timken Roller Bearings
New Departure Ball Bearings
Thompson Silchrome and Alloy Valves
McQuay Norris Motor Bearings
Stewart-Warner Products

Tires and Prices	
29x4.40 \$10.05
29x4.75 \$12.60
30x4.95 \$14.65
30x5.25 \$16.40
31x5.25 \$17.05

Performance and Comfort Unequaled at Its Price

\$750
to \$830
f. o. b. Detroit

WE ARE eager to have you ride in the Chrysler "50" and drive it, fully confident that the moment you compare it with any car approximating its own price—you will not fail to choose the Chrysler "50".

In its characteristic Chrysler fleetness and dash, its smoothness throughout its entire speed range, its economy, its full-sized roominess for adult passengers, its smartness of line and coloring, indisputable value proclaims the "50" as far and away the greatest offering at its price.

Chrysler "50" Features
50 miles and more an hour;
5 to 25 miles in 8 seconds;
25 miles to the gallon;
Full-sized, with ample seating capacity for adult passengers;
Mohair plush upholstery.

Coupe \$750; Coach \$780; Roadster (with rumble seat) \$795; Sedan \$820; f. o. b. Detroit, subject to current Federal excise tax. Chrysler dealers are in a position to extend the convenience of time payments. Ask about Chrysler's attractive plan. All Chrysler cars have the additional protection against theft of the Fedco System of numbering.

CHRYSLER "50"

BUILT AS ONLY CHRYSLER BUILDS™

L. W. WEEKS

Jefferson Ave. Telephone 180-J

CHRYSLER MODEL NUMBERS MEAN MILES PER HOUR