

LaGrande Evening Observer

(Incorporated)
An Independent Newspaper
FRANK B. APPELBY Editor and Publisher
HARVEY F. MATTHEWS Business Manager
Published evenings, except Sunday, at 1416 Adams Avenue, La Grande, Oregon. The Observer-Star published every Friday. Entered at the Postoffice at La Grande, Oregon, as Second Class Mail Matter under act of March 3, 1879.

OFFICIAL PAPER OF UNION COUNTY AND THE CITY OF LA GRANDE

MEMBER ASSOCIATED PRESS
The Associated Press is exclusively entitled to use for publication of all news dispatches credited to it or not otherwise credited if published therein. All rights of republication of special dispatches in this paper, and also the local news herein also are reserved.

SUBSCRIPTION RATES
By Carrier
Daily, per month in advance.....75c
Daily, per six months in advance.....\$4.50
Daily, single copy.....5c

By Mail
Daily, per month in advance.....50c
Daily, per six months in advance.....\$2.50
Daily, per year in advance.....\$5.00
Weekly Observer-Star, per year.....\$2.00

ADVERTISING RATES
Display, foreign, per column inch.....42c
Display, local, per column inch.....40c
Time contract prices on application.

JOH HUMILES HIMSELF—Hear, I beseech Thee, Lord! I have heard of Thee by the hearing of the ear; but now mine eyes see Thee. Wherefore I abhor myself, and repent in dust and ashes. Job, 42:4, 5, 6.

CUBE BUTTER IN ANOTHER TUMBLE

Country Dressed Meats Slightly Weaker—Flour Advance Decided on

PORTLAND, Ore., Apr. 29 (AP)—Cube butter took another tumble on the dairy exchange late yesterday afternoon and trading today is at lower prices for all grades except firsts. Extras are down a half cent, also prime firsts. Standards declined a full cent, likewise affecting the exchanging price of prints and butterfat automatically.

The egg market is steady and unchanged locally.

Under a strong supply, country dressed meats are slightly weaker in price. Fancy veal is selling generally at 17c while fancy pork is running from 14 1/2 to 15 1/2 cents.

Higher prices for onions on the local market have obtained, with Oregon yellow onions reaching as high as \$7.00 per cwt.

Flour to Jump

In face of a stronger demand, millers have announced advances in the price of all grades of flour. Whole grain, graham and pastry flour are quoted 20 cents higher. Hard wheat flour is also advanced 20 cents per barrel and higher "patents" are up 40c per barrel. Family "patents" had gone up 26 cents at the close of last week.

NEW YORK FRUIT
NEW YORK, Apr. 29 (AP)—Evaporated apples steady; prunes steady; apricots steady; peaches steady.

BUTTERFAT
SAN FRANCISCO, Apr. 29 (AP)—Butterfat (c.o.b. San Francisco) 45 1/2 cents.

Prices Rally in Stock Exchange Trading Today

NEW YORK, Apr. 29 (AP)—Selling pressure was lifted from today's stock market after an early period of heaviness, and prices rallied briskly throughout the day.

About a dozen oils sank to new low levels for the year in the early trading, but heavy short covering in that group brought about a good rally, with several issues rising a point or more above their early lows. Phillip Morris sank to a new 1927 low, while American Water Works and Hudson and Manhattan attained new peaks for the year.

Group buying was effective in the railroad equipment, motor, public utilities and railroad shares.

The closing was firm. Short covering supplied the main driving power, which forced some issues to new peak prices in the last hour, notably American Water Works and Electric, child's company, Hudson and Manhattan and National Biscuit. General Motors rose to above 180 and U.S. Steel hovered around 165. Heavy selling, however, was seen in the Continental Baking Issues, the "A" stock falling 2 1/2 points to a new low for the year and the preferred losing 2 points. Total sales approximated 1,800,000 shares.

Wheat Closes Firm; Prices Are Higher

CHICAGO, Apr. 29 (AP)—Opening 1/2c to 1 1/2c higher, wheat later showed good additional gains. Corn, oats and provisions were also firmer, corn starting unchanged to 1/2c higher, and subsequently showing a general upturn.

Wheat closed firm, 1/2 to 1 1/2c net higher; corn 1/2 to 1/2c up; oats showing 1/2 to 1/2c advance and provisions at a shade to 25c gain.

New Business in Lumber Trade Seen

NEW YORK, Apr. 29 (AP)—New business in the softwood lumber industry for the week ended April 23 was about the same as the week before, shipments showed substantial increases while production fell off to some extent, the National Lumber Manufacturers' association reports. Compared with a year ago, decreases are shown in all three items. Hardwood shipments showed heavy decrease in production, a notable reduction in shipments with new business about the same as the week before. Unfilled order of 176 southern pine and west coast mills were 525,165, 755 feet against 549,032,274 the earlier week.

COSTLY CARELESS MAILING

It cost the Philadelphia post office \$30,000 in 1926 to take care of carelessly or illegibly addressed mail. A force of 13 clerks devote their entire time to such work. Other large cities probably have the same experience in only slightly varying degree. As a tribute to the resourcefulness and skill of these clerks it is boasted that only one in a million letters mailed is ultimately lost.

One questions whether the letters so saved from the oblivion of the dead letter office are worth anywhere near \$30,000 multiplied by the number of large post offices doing such rescue work. Really important mail is likely to be carefully addressed. At least, we hope it is.

It is almost awesome to contemplate the trustfulness and carelessness of the mail-sending public. In spite of plainly given and oft-repeated instructions about addressing correctly and clearly, about putting return addresses on mail, and about giving the local post office your own change of address when you move, a surprisingly large section of the public goes right ahead ignoring all the rules and calmly trusting to Uncle Sam to make up for its deficiencies.

Perhaps if the various post offices didn't do such a good job retrieving otherwise lost mail, the public would wake up and assume more of its own responsibility.

PRUNE PACKERS MEET

PORTLAND, Ore., Apr. 29 (AP)—Prune packers of Oregon and Clark county Washington were meeting here today to hear a report of the organization committee of five on a plan of organizing the prune interests of this section.

Wm. Penn—5 cents—A Good Clear

MARKET NEWS OF THE DAY

CHICAGO GRAIN				
Wheat	Open	High	Low	Close
May	135 1/2 @ 136 1/4	137	135 1/2	136 1/2 @ 137
July	130 1/2 @ 130 3/4	131 1/4	130 1/4	130 3/4 @ 131
Sept.	129 1/2 @ 129 1/2	129 1/2	129 1/2	129 1/2 @ 129 1/2

LIVERPOOL WHEAT		CHICAGO CASH	
LIVERPOOL, Apr. 29 (AP)—	Close wheat 1/4 to 3/4 higher; May 10 7/8; July 10 5/8; Oct. 10 1/2 1/2d.	CHICAGO, Apr. 29 (AP)—	Wheat: No. 2 red \$1.37 @ 1.37 1/2; No. 1 hard \$1.41.

PORTLAND WHEAT		PORTLAND LIVESTOCK	
PORTLAND, Ore., Apr. 29 (AP)—	Wheat: BBB1 hard white \$1.42; hard white bluestem, hard \$1.39; Federation soft white, western white, northern spring \$1.38; hard winter \$1.37; western red \$1.33.	PORTLAND, Ore., Apr. 29 (AP)—	Cattle—Inquiry about steady; no early trading; no fresh rail receipts.

NEW YORK FRUIT		PORTLAND LIVESTOCK	
NEW YORK, Apr. 29 (AP)—	Evaporated apples steady; prunes steady; apricots steady; peaches steady.	PORTLAND, Ore., Apr. 29 (AP)—	Cattle—Inquiry about steady; no early trading; no fresh rail receipts.

BUTTERFAT		PORTLAND LIVESTOCK	
SAN FRANCISCO, Apr. 29 (AP)—	Butterfat (c.o.b. San Francisco) 45 1/2 cents.	PORTLAND, Ore., Apr. 29 (AP)—	Cattle—Inquiry about steady; no early trading; no fresh rail receipts.



WILL BUY
Shoes - Dresses - Hats
Boys' Wash Suits - Caps - Sweaters

1 1/2 Yards of 36-Inch Colored Linen
3 Yards of 42-Inch Pillow Tubing
5 Yards of 27-Inch Daisy Cloth

AT OUR SPECIAL \$ SALE
TODAY - SATURDAY AND MONDAY

NORTON'S KIDDY SHOP
Better Merchandise - Lower Prices

PORTLAND PRODUCE
PORTLAND, Ore., Apr. 1 (AP)—Wholesale prices: Butter—all grades 1/2 to 1c lower, except firsts. Extra cubes, city, 40c; standards, 38c; prime firsts, 38 1/2c; firsts, 35 1/2c. Creamery prices: firsts, 25c above cube standard; prints, 2c above cube standard.

JOEL'S

MAIN 759
LA GRANDE'S LOWER PRICED SERVICE STORE

We Offer For Saturday Buying

3 Lbs. New Potatoes.....	27c
2 Lbs. Green Peas.....	25c
Bananas, doz.....	39c
2 Lbs. Blue Mt. or Meadow Harvest Butter.....	85c
2 doz. Eggs.....	46c

FRESH STRAWBERRIES
2 for 45c

Green Onions, bunch.....	5c
Spinach, 3 Lbs.....	25c
Relish Spread.....	25c
Carrots, 3 bunches for.....	25c
Turnips, bunch.....	10c
Beets, bunch.....	10c

OUR MEAT MARKET OFFERS

Fresh dressed Plymouth Rock and Rhode Island Red Hens.
Rolled Roasts, Swiss Steak, Standing Rib Roasts.
Cold Boiled Ham, Swift's Weinies, Carsten's Ham, Minceed Ham.

New Summertime Sox for Kiddies



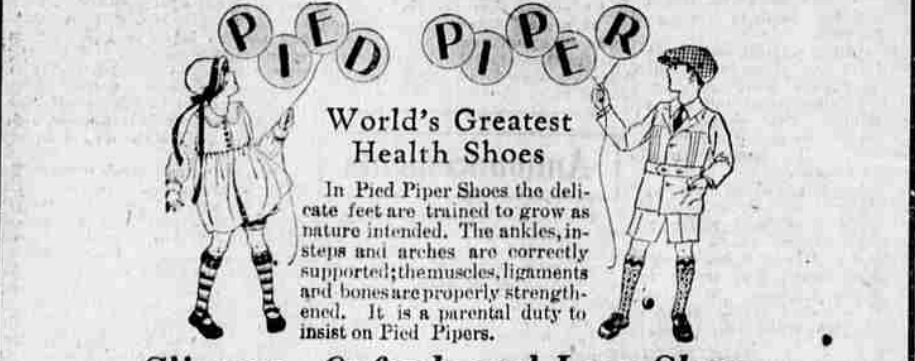
In Half, Three-Quarter and Full Length, in Cotton, Lisle and All-Silk Hose

Half Sox
THE cutest colors and combinations you've ever seen are these new half and three-quarter sox with checked and plaid cuffs with drop stitch and plaid patterns. So cool and comfortable looking with little summer frocks and 25c to 75c suits and in all sizes

Child's Sport Hose
In gay plaids and checks in various colors in a serviceable weight lisle hose of exceptional wearing qualities..... 85c to \$1

Silk Hose, Full Length
Growing girls' silk hose up to size 10 in a good wearing fine woven silk to the hem weight in several pleasing shades..... \$1.00

Shoes That Fit Those Growing Feet



Slippers, Oxfords and Lace Shoes in Various Colors and Leathers

SHOES that fit the little feet in styles and leathers for every occasion, dress, play or school wear. Dainty pattern leather straps, oxfords in plain and reptile trims and shoes in the popular tan shades and patent leather. We carry a complete stock of sizes and especially the narrower widths in shoes that wear \$1.95 to \$5.50

N. K. WEST & CO., INC.
La Grande's Leading Store for 25 Years

PORTLAND PRODUCE		Bids to farmer:		Poultry—Broilers about 5c each.	
PORTLAND, Ore., Apr. 1 (AP)—	Wholesale prices: Butter—all grades 1/2 to 1c lower, except firsts. Extra cubes, city, 40c; standards, 38c; prime firsts, 38 1/2c; firsts, 35 1/2c. Creamery prices: firsts, 25c above cube standard; prints, 2c above cube standard.	Milk—Butterfat 1c lower. Raw milk (4 per cent), \$2.30 cwt. f.o.b. Portland. Butterfat 40c, f.o.b. Portland.	Eggs steady. Current receipts, 20c; fresh medium, 20c; fresh standard firsts, 22c; fresh standard extras, 23c.	Heavy hens, 25c; light, 20c; 21c; springs, nominal; broilers, 20c; 25c; Pekin white ducks, 20c; colored, nominal; turkeys, live, nominal; dressed, 37c.	Onions, firmer; local, \$2.75 @ 7.00.

A New Telephone Directory

will be issued soon.
Install a telephone and get a listing in the directory.

Home Independent Telephone Co.
Sound Progressive Reliable

LA GRANDE NATIONAL BANK

1887-1927
Forty Years Service

Cooked Foods for Outing Trips

HOME-MADE SALADS, MARMALADES, MAYONNAISE, COLD MEATS, CAKES, ETC.

Salads—
Potato
Macaroni
Fruit
Vegetable

Cold Meats—
French Soupe
Luncheon Specialty
Boiled Ham
Baked Luncheon Loaf
Summer Sausage

Cottage Cheese, Cream, Milk, and Ice Cream

Pattison Bros. Grocery
Phone Main 80