

# MONTH-END CLEARANCE

## Thursday, Friday and Saturday April 28th to 30th

**Smartest Spring Silks**  
New Crepes and New Prints  
Moderately Priced

Dependable Quality **Hill's** Dependable Values

### O. T. REFUSES TO USE S. P. TRACKS

### Great Northern Comes Actively into Central Oregon Controversy

WASHINGTON, Apr. 27 (AP)—The Oregon Trunk railroad refused today to accept a trucking contract allowing it to run trains over the Southern Pacific lines between Painesville and Klamath Falls, Ore. At the same time the Great Northern railroad advised the interstate commerce commission, which has the controversy over central Oregon construction under consideration, that it desired to extend its own operations in the same territory. The Oregon Trunk is controlled by the Hill railroad group, which controls also the Great Northern and Northern Pacific.

**Terms Flatly Refused**  
The difference between Oregon railroads developed when the Oregon Trunk sought to build into Klamath Falls, paralleling Southern Pacific railroad extension. After investigation the commission denied the Oregon Trunk construction application, but instructed the Southern Pacific company to permit the Oregon Trunk to operate over Southern Pacific tracks. Terms of the Southern Pacific for such joint use were completely refused today.

The Great Northern today made formal application to the commission for permission to operate directly into the Oregon territory, declaring it wanted to open up a route from Spokane, Wash., to Klamath Falls, utilizing its own tracks, the tracks of the Spokane, Portland and Seattle, and those of the Oregon Trunk.

**Would Build Own Line**  
Further, the Great Northern indicated, it desired to build its own line between Bend and Klamath Falls, but in case this was not considered favorably by the commission, it would take trucking rights over the Southern Pacific as the commission proposed the Oregon Trunk should do.

By directly entering into the Oregon field with its own operating system, the Great Northern corporation said, that company would be able to compete effectively with the Southern Pacific to the benefit of the territory concerned. The Great Northern said it was willing to utilize the existing line of the Oregon, California and Eastern which had been tentatively acquired by the Southern Pacific and proposed to build such connections and branches on the contemplated Oregon route as would be necessary to serve the traffic. No statement was issued by the commission but it is believed the railroad concerned will be again given opportunity to present evidence in support of the conflicting program for extensions which they have advanced.

PORTLAND, Ore., Apr. 27 (AP)—Modification of the terms for joint use of the Southern Pacific cascade line, in the event the Great Northern uses that part of the line between Painesville and Klamath Falls in its proposed extension south from Bend were shown in information received in local railroad circles.

In his application to the interstate commerce commission President Ralph Budd, of the Great Northern proposes that the interest charge on the common user section of the cascade line be reduced from 1 1/2 to five per cent annually on the rest of that portion of the line to one-third; that the common user contract become effective in January 1928 instead of 1929; that the duration of the common user contract be 50 years instead of 25 years, and that a review of the terms of the contract shall

be made by the interstate commerce commission on application of either party. There are several other minor changes suggested in the draft of the contract.

### UNION PERSONALS

**UNION.** (Special)—Mrs. Patrick Sullivan, who has been very ill at her home in South Union, is reported as slightly improved at this time. Her grandson, William Hogan, and his wife, who came here a few days ago from Walla Walla, Wash., left for their home last Wednesday.

Mrs. Mary Minnie, who was taken to the Hot Lake hospital about a week ago, suffering with an infected finger, had the injured member amputated.

A gang of workmen passed through Union Saturday morning putting up through wires for the light and power company. Orchard and truck garden men are again getting busy with their spring plowing and planting which was temporarily held up by the cold weather.

Dr. T. M. Gilmore, C. L. Cadwell, and Dr. Davis left Union early Friday morning for Minam, where they spent several hours fishing. A good catch of trout was brought back to Union.

Carl Zeamer, whose home is near Elgin, has been in that part of the valley for the past few days. Leon Levy, owner of a Jersey farm north of Union, is getting around now with the aid of a cane, owing to his meeting with an accident a few days ago. He was carrying a couple of heavy loads and slipped on the snowy ground, badly twisting his ankle. He was taken to Hot Lake and the injured ankle bandaged up.

Isolores Corbett, who has been staying with her grandparents, Mr. and Mrs. E. Haines, and attending the Union schools, left the latter part of last week for Los Angeles, where her father works for one of the movie companies.

The Baker-Union track meet which was scheduled for last Saturday, April 23, had to be cancelled because there is so much illness in the Union high school. So far, the local boys have not been able to have even a real clinic meet this year.

Honoring his selection as a member of the state game commission, the local organization, The Sportsman's club, acted as host to L. A. Wright at a 6 o'clock dinner at the Union hotel Friday night of last week. The dinner was well attended by local members and John Dean, of Cove, was also present.

The high school girls' indoor baseball team went to Waiwera Saturday and won a second time from the latter school, the first game having been played on the Union gym floor. At this second game the Maroon and White girls won out by a score of 22 to 12. The local girls who made the trip and played in the game were: Twiss Smith, Vera Weaver, Helen Salinger, Viola Hillman, Edith Miller, Katie Reutter, Marie Smith, Alice Gauthier, Irene Lovhaug, Edith Cheney, and Ruth Connor.

Mrs. Harry Anderson, who makes her home in Baker, was down Saturday visiting with relatives in Union. Mrs. Frank Sturgill motored to Waiwera Saturday. She acted as chaperone for the baseball team of high school girls. Roy Conklin and Floyd Gauthier also made the trip to the adjoining county for the ball game.

The high school picnic days will come one each week until the end of the term, each class having one day off for their annual picnic. The seniors plan on holding theirs on Wednesday of this week. The addition to the service station owned by H. H. Little, of Cove, is nearing completion and will soon be ready for use.

Clude Pickin and family were over from Huntington to spend Sunday with relatives and friends here. The Pickin's were former residents of this place. It is the opinion of fruit men in this end of the valley that the late freezes have done considerable damage to the fruit crop for this season. Some even report that the apricot trees are killed and other fruits seriously damaged.

**UNDER** our policy of Lower Prices and Quick Turnover, stocks must be kept constantly moving and replaced by new merchandise month by month. This is the system adopted by all up-to-date merchants. "Out with the old; in with the new" is our slogan. Read carefully the items enumerated below. This is all high quality merchandise, in perfect condition and each item carries our unqualified guarantee for complete satisfaction and service.

In order to keep our stocks moving we have re-priced this merchandise to the lowest possible level to insure quick selling. If you have not opened your investment account under our new One Price Policy we cordially invite you to do so now and share in the wonderful money-saving opportunities afforded by this event. Terms when desired can easily be arranged, the payments spread over a period of time suited to the requirements of your income.



**Window Shades**  
45c Each  
Sizes 18" to 48"  
Values up to \$2.50  
About 45 odd window shades in different colors. All fine—oil opaque shades. Sizes run from 18 inches to 45 inches wide. Take your choice while they last at **45c**



**Two-Piece all Mohair Suite**  
**\$135**

Unquestionably an extraordinary value, these two pieces—Davenport and Chair are covered entirely with mohair in the popular taupe shade. The cushions are reversible in a colorful tapestry. You would expect to pay not less than \$200 for this suite at any store.

**BILTWELL DAVENPORT BED.** A doubly useful piece of furniture. It gives you a full size, restful bed and with a single motion can be made into a handsome piece of living room furniture. Walnut finished in beautiful shaded effect. The upholstery is in velour either rose or blue combined with taupe. Two loose pillows for the back are included with this piece. **\$95.00**

**MOHAIR DAVENPORT.** Here is value in combination mohair davenport; popular taupe color trimmed with black welts. Priced for **\$110.00** quick clearance at this low price.

**MOHAIR DAVENPORTS.** In this group we have placed several davenports that sold originally for a much higher price. Reversible cushions and colorful fabrics. **\$150.00**

**Dressers**  
A thoroughly well constructed Dresser with heavy plate glass mirror. Has 2 large and 2 small drawers. Made of hardwood and nicely finished in golden color **\$19.75**

**SIMMONS METAL DRESSER**  
This is a large dresser with full plate glass mirror, finished in a beautiful grained walnut. Now priced to close at half the original **\$39.50** price

**WALNUT VANITY DRESSER**  
With long mirror and 2 drawers on each side **\$29.50**

**DRESSING TABLE**  
Odd piece in walnut—a high grade Grand Rapids production dressing table with triple mirror and 2 drawers—**\$39.50** a real value.



**Chiffonier**  
Ideal for storage. Has 4 large and 2 small drawers. Constructed of hardwood and finished in a golden color. The saving is considerable during this month-end clearance **\$15.00**

Similar to above. In grey enamel finish with polychrome decorations. Two large drawers and 3 sliding trays. The old price was \$40.00. Our clearance price **\$25.00**

**Coil Bed Springs**  
**\$5.00**  
2 1/2 Size Only  
If you possess a twin bed that needs a new spring, here is an opportunity to secure one at this remarkably low price. Yes, this is less than half of the original price.

**Inlaid Linoleum Remnants**  
Sq. \$1.00 Yd.  
Inlaid linoleum in pieces from 4 1/2 up to 6 1/2 ft. Includes most of the heavier grades that formerly sold for twice this amount. Bring your room measurements with you.

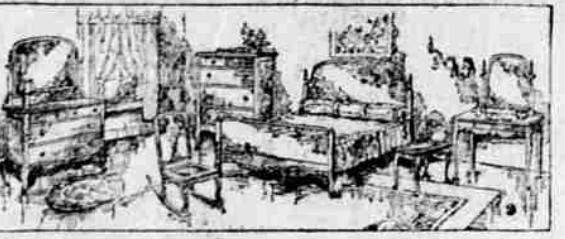
**Inlaid Linoleum**  
Sq. \$1.25 Yd.  
Heavy weight pieces in inlaid linoleum in the following lengths: 1 pc. 15 ft.; 1 pc. 21 ft.; 1 pc. 24 ft.; 1 pc. 18 ft. Popular patterns and designs that we know will please you.

**9x12 Axminster Rugs**  
**\$29.50**  
Four only, 9x12 Axminster Rugs, good patterns and a splendid value.

**27x54-In. Axminster Rugs**  
**\$2.95**

**Walnut Buffet**  
**\$29.50**  
Here is a 48-inch combination walnut buffet with lined silver drawer and ample cupboard space. There are two of these which we will close out at this special low price.

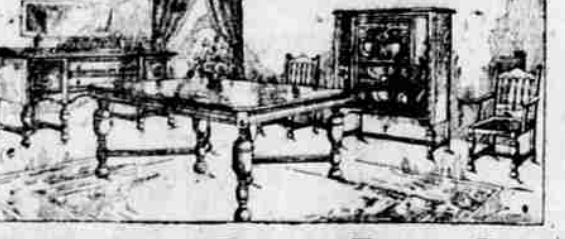
**WALNUT DINING Tables**  
Odd oblong extension tables, Queen Anne and Italian designs. Beautiful tables at a price almost **\$29.50** unbelievable



**Three-Piece Walnut Bedroom Suite \$142**

Outstanding value, of excellent design, this suite consists of massive Dresser with large mirror, large triple mirror Vanity, and Bow-End Bed. Beautiful matched walnut veneers are used on all the broad surfaces with gold line decorations, giving it a distinctive appearance.

**THREE-PIECE IVORY SUITE.** Includes Bed, Dresser and Chiffonier in old ivory finish, with painted decorations on fronts, presenting a handsome appearance. **\$69.50**



**Eight-Piece Dining Room Suite \$165**

Beautiful combination walnut suite with 60-inch Buffet, Oblong Table and six Chairs. The design and finish are all that could be desired—a value that you will recognize immediately.

**EIGHT-PIECE DINING SUITE.** The 60-inch Buffet and the Chairs with tapestry upholstered seats and back give this suite a distinctive appearance. The Oblong Table has cut corners and extends to 8 feet. **\$225.00**

**EIGHT-PIECE DINING SUITE.** Hepplewhite design. 66-inch Buffet with long linen drawer, lined drawer for silver and ample storage space. The Chairs have tapestry upholstered seats. A high grade suite, re-marked to this popular price. **\$275.00**

**Curtain Rods**  
15c Each  
Originally sold for 25c. Flat extension rods, room-neck shape, brass finish. Sold originally for 25c. Complete with finials, ready to hang. To close out while they last at **15c**



**Steel Beds**  
Ivory finish square tube bed similar to illustration, without cane panel; full size. These beds are samples, slightly marred, therefore reduced to this low **\$14.75** price level.

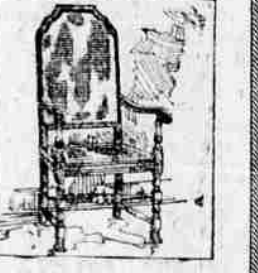
**Wesco Steel Range**  
**\$49.50**  
Wesco steel range with 6-hole polished top and hot base. This is a guaranteed baker and a range that will give entire satisfaction. An unusual value at this low price.

**Print Linoleum Remnants**  
Sq. 75c Yd.  
Print linoleum, includes pieces from 3 1/2 up to 6 1/2 ft.—of good quality with turp. back. Specially suitable for bathroom, hallway, etc. Bring room measurements with you.

**Carpet Samples**  
**\$1.75**  
Size 27x54-in. Values up to \$5.00. Heavy quality Axminster and velvet with bound ends. Good variety of patterns. Come early and have the benefit of first choice.

**9x12 Axminster Rugs**  
**\$42.50**  
Six only, heavy quality seamless Axminster rug. These are exceptionally fine and durable rugs and the patterns very desirable. Will give you many years of satisfactory service.

**Twin Size Beds**  
Less than half price for these two pair of high grade Simmons beds. One pair is in ivory and one in walnut, decorated with full steel cane ends. You should be quick to take advantage of this offer. Re-priced for quick selling at the low price **\$29.50** of



**OCCASIONAL Chairs**  
**\$25.00 to \$30.00**

Excellent values will be found in the group—solid walnut, some with cane seats and backs; others with beautiful tapestries—a welcome addition to any living room. We invite your inspection so that you can fully appreciate their worth.

**Individual Pieces Re-Priced**  
Dozens of the individual pieces will be found throughout our stock—re-priced at a figure that is very attractive. You will find just what you have in mind at the right price.



**OCCASIONAL Tables**  
Choice of four patterns, in combination walnut, round and octagonal tops. Exceptional values **\$29.50**

**YOU CAN SAVE UNDER OUR ONE-PRICE POLICY**

**OPEN AN ACCOUNT**

### Many Fatal Diseases

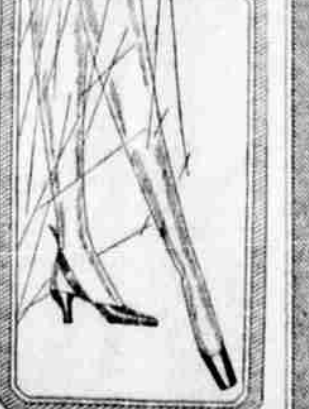
Show their first symptoms in the eyes. That fact alone should establish your confidence in the importance of having your eyes properly examined as the first appearance of discomfort.

**WE HAVE THE INSTRUMENTS**  
necessary for making the fullest scientific eye examinations, and nothing is left undone that can be done to find the cause of trouble.

### Glasses—Heacock Fits—Fit

Next Door to Star Theatre

### It's the Strap



Square toes and the new heel strap, designed to prevent the mules from slipping, make these of gold kid, charmingly quiet

# CARR FURNITURE CO.