

SOCIETY NEWS

Presbyterian Class Guest at Evening Party

The high school girl graduates Sunday school class of the First Presbyterian church was entertained last evening at the home of Miss Margaret Baker on Adams avenue.

Thirteen girls were present and the early part of the evening was taken up with a short business session, presided over by the president, Miss Lillian Sims.

Miss Hulda Anderson, teacher, conducted a study class on Presbyterianism, after which games were enjoyed for the remainder of the evening.

The hostess served refreshments before adjournment.

The class will meet again Tuesday evening, April 19, at the home of Miss Lillian Sims.

Mrs. Grover Grinnett was hostess to the members of the M. L. I. club yesterday afternoon at her farm home.

Three tables of bridge were at play during the afternoon and high score was won by Mrs. Ray Good-nough.

Yellow daffodils were used to decorate the rooms. A two-course luncheon followed the card games. Mrs. Gilbert Barron will be the next hostess to the club Tuesday, April 19.

Mrs. W. P. McAdory entertained at luncheon Monday noon at the Foley hotel complimenting Mrs. George Lovejoy, who is in La Grande and at Hot Lake for a short time.

Honoring the fourteenth birthday anniversary of her daughter, Mrs. Edith Smith, Mrs. J. M. Smith entertained at a birthday party Saturday evening at the Bowman-Hicks boarding house, where they make their home.

Twenty-five school friends were present, the affair being a complete surprise to the honor guest. Games were enjoyed during the evening and at a late hour Mrs. Smith, assisted by Mrs. Pete Nelson, served refreshments.

Flowers were used to decorate the rooms. The honor guest received many gifts in remembrance of her birthday anniversary.

The regular lodge session of the Ladies' auxiliary to the Brotherhood of Railway Trainmen was held last evening at Eagles' hall.

The regular lodge work was taken up during the evening. At the next meeting of the auxiliary a sociable will follow the lodge meeting.

All-Day Meeting Is Held at Cove

COVE (Special)—Members of the Ladies' Guild of the Episcopal church spent Thursday of last week at the home of Mrs. A. G. Conklin. It was an all-day meeting to do sewing for the apron sale to be held Wednesday, April 13, at Morris hall.

A potluck lunch was served at noon and in the afternoon the guild members were joined by the Woman's club and the Rev. S. W. Creasey made an address.

LADD CANYON (Special)—The women of the Ladd Canyon Get-Together club have arranged to have a short program at each meeting of the club and the following chairmen have been appointed to have charge: Mrs. Charles Grandy, Mrs. James McClure, Mrs. C. Y. Beale and Mrs. Adolph Peehler.

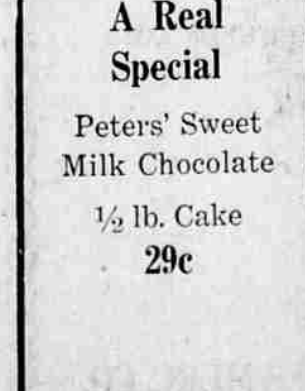
The first program, in charge of Mrs. Grandy, was given when the club met at the home of Mrs. Elliott Austin. The second program, under the direction of Mrs. McClure, was presented Thursday afternoon, when the club had an interesting meeting at the home of Mrs. William Banton.

The program consisted of a vocal solo by Mrs. Henry Peehler, a playlet entitled "The Flapper," and an April fool burlesque orchestra. Mrs. McClure was the grandmother in the play, Mrs. Henry Peehler was the flapper, Mrs. William Banton was the mother and Mrs. Elliott Austin took the part of Tom. The same women were members of the orchestra.

After the program the hostess served refreshments.

The next meeting of the club will be at the home of Mrs. T. W. Bates, April 14, when Mrs. C. Y. Beale will have charge of the entertainment.

Thonged Beads



A Real Special
Peters' Sweet Milk Chocolate
1/2 lb. Cake
29c

Moon Drug Co.
Agents for The Owl Drug Co.

Announcements

The Mother's Self Culture club will meet tomorrow afternoon at 2:30 o'clock at the home of Mrs. Otis Palmer. All members are urged to be there.

The art department of the Neighborhood club will meet for study tomorrow afternoon at 2:15 o'clock in the Neighborhood club rooms. Mrs. F. B. Appleby will be in charge and the subject is "Dutch Landscape Painters." All interested, whether members of the department or not, are invited.

The Woman's club of the Baptist Sunday school will meet tomorrow afternoon at 2:30 o'clock at the home of Mrs. C. E. Bap-persett.

A special meeting of the Woman's Benefit association has been called for tomorrow evening at 7:30 o'clock by Mrs. Adelaide Packard, district deputy, the meeting to take place at the home of Mrs. Charles Murchison, 2007 First street. Plans for the rally to be held in Pondstone, May 9, will be discussed.

The Ladies' society to the Brotherhood of Locomotive Firemen and Enginemen will meet tomorrow afternoon at 2 o'clock at the K. P. hall. There will be initiation and other important business. All members are urged to be present.

MENUS

By Sister Mary
BREAKFAST—Grapefruit juice, salt codfish hash, spider corn-bread, coffee.

LUNCHEON—Eggs piquant, lettuce sandwiches, apple tapioca pudding, milk tea.

DINNER—Bouillon, toasted wafers, creamed flinnet haddock, steamed rice, spiced folla, buttered green beans, graham rolls, fresh pineapple with mock angel food cake, milk, coffee.

If small children must be served breakfast, a cereal should be added to the menu. The average adult, however, will find the meal suggested most to his liking.

Eggs Piquant
Four hard-cooked eggs, 1/2 onion, 2 tablespoons butter, 1/4 cup cream, 2 eggs, 2 tablespoons minced parsley, 1/2 teaspoon salt, 1/4 teaspoon pepper, 1/2 cup fino (toasted bread crumbs), 1/2 lemon.

Melt butter, add onion peeled and cut in thin slices and cook until onion is yellow. Cut eggs in halves lengthwise and add with cream to onion. Beat eggs until very light and mix with crumbs, parsley, salt, pepper and juice of lemon. Pour this mixture over eggs in sauce pan, cover pan and cook over a low fire until eggs are set, about ten minutes. Turn into a hot serving dish, garnish with parsley and serve alone.

(Copyright, 1927, NEA Service, Inc.)

HEALTH

ENCOURAGE EARLY DIAGNOSIS
By Simon Levin, M. D., Houghton, Mich.
Member Gorgas Memorial Institute

Modern business is carried on on the basis of efficiency—i. e., increased output with decreased time in production. If we could demonstrate to you that early diagnosis of diseases, which not only decrease your efficiency but may cripple or destroy you, would be to your advantage, would you not have proper and prompt examination to determine the early signs of these maladies?

Early discovery prevents these diseases by the prompt removal of the causes or by the early removal of the diseases themselves. For example, this applies to the removal of pre-cancerous growths, attention to and removal of infected teeth and tonsils, and removal of chronic gall bladders and appendices. Early recognition of diseases of the stomach and bowels would prevent an immense amount of suffering.

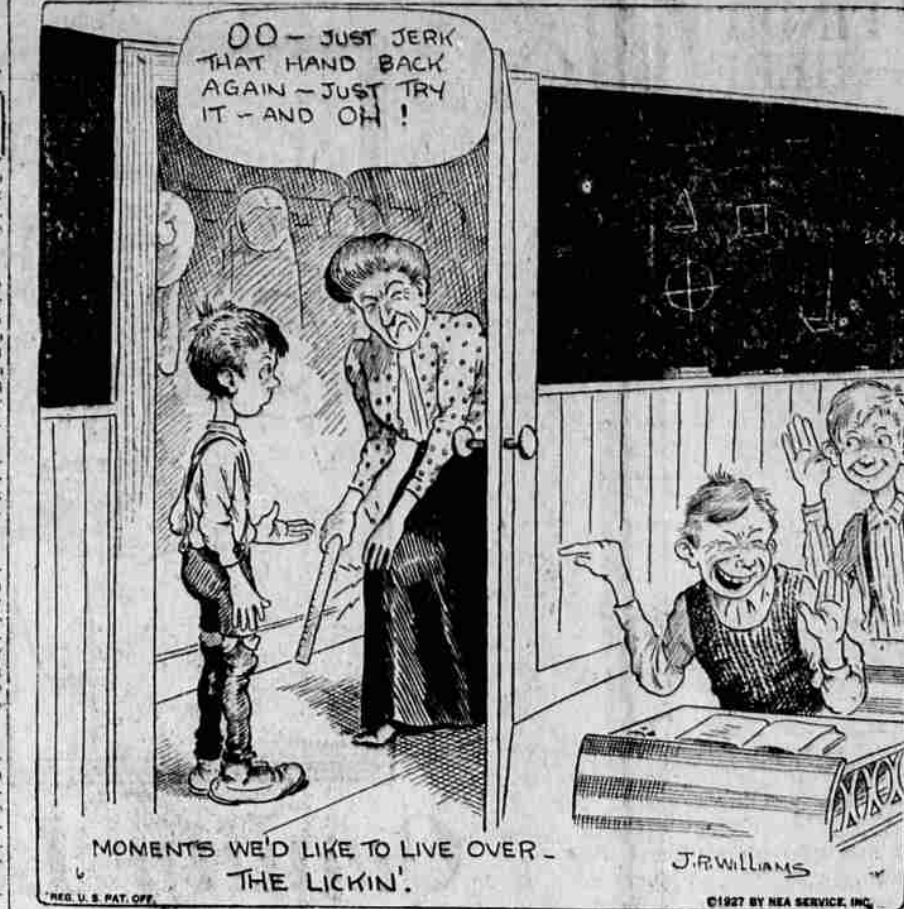
Recognize "lumps" on or in the body as potential sources of vicious diseases. Moles, tumors, masses in the skin or breasts—whether male or female—tumors of the womb and adjacent organs never should be permitted to re-appear.

Thonged Beads



To be worn with tailored tweed suits is this new beaded jewelry—so-called because heavy silver beads are strung on brown leather thongs.

OUT OUR WAY



REG. U. S. PAT. OFF. J. R. WILLIAMS ©1927 BY NEA SERVICE, INC.

main, as we may be confronted with an advanced condition which is not amenable to surgery or ray treatment.

Do not permit any of these so-called "serum treatments" for growths unless your family physician authorizes it, because, to date such means are only in the experimental stage and only cause delays that are fatal. So beware!

This principle of early diagnosis applies as well to medical diseases like tuberculosis, typhoid, and many others that I could mention.

Infected gums, pyorrhea, abscessed teeth and tonsils leave a train of insidious degenerations in their paths like heart and blood vessel diseases, kidney diseases, ulcers of the stomach and intestinal canal, and joint diseases that have caused more agony and crippling than we are willing to acknowledge.

In the practice of any thorough physician it can be easily demonstrated that aging and death in the fifties and sixties are due in the largest percentage to improper care of infected teeth and tonsils.

The best proof of the efficiency of earlier diagnosis can be found in the marked advance of the average death rate which has gone

from 37 to 58 years in the last 60 years. In other words, your possibilities of life have improved 20 years in little more than half a century, during which time medicine and surgery have made most important advances.

DEPUTY'S WIFE IN FIRST LADY OF LAND

PARIS—One woman in France is glad that President Doumergue is a bachelor, for that circumstance has made her, the wife of Fernand Bouisson, president of the chamber of deputies, the first lady of the republic.

The three highest official offices in France are the presidencies of the republic, the senate and the chamber. Because the first two are a bachelor and a widower respectively, Madame Bouisson automatically ranks highest official hostess, and aids her husband greatly in his social duties. She has a wide reputation for political sagacity.

WOMAN SHOWS BANKS SALES WINDOW VALUE

CHICAGO—Bank windows, once cloaked with heavy curtains and made ominous by metal gratings now have a sales value, since Miss

Jessamine Hougland, woman banker and advertising expert taught officials how much advertising power there was in the open show window.

The windows of financial houses now contain all manner of displays which sell the idea of savings accounts. Many banks have discovered that passersby are attracted most by mechanical displays.

WIFE REFUSES TO SEE CARPENTER FIGHT

PARIS—One wife who will not "stand by" her husband in his professional activities is Madame Georges Carpentier who not only refuses to see him fight but also to attend the music-hall in Paris where he is featured.

She says she is afraid of the crowd's criticism and therefore never reads newspaper accounts of her husband's bouts.

"I wait for Georges to return," she says, "and tell me of his fights himself."

Tessum Trot, Indiana, has a population of fourteen persons and twenty-eight dogs.

The Garden

MARIGOLDS, GREAT AND SMALL

Marigolds, great and small, from six inches to four feet in stature, single, semidouble, double, from little half-inch flowers to great four-inch globes of glowing orange, in variety sufficient to make an entire garden are now listed. The finest marigold is the fragrant, ferny leaved edging marigold known as Tagetes signata, pumila the pygmy of the tribe and a handsome little plant with four-petaled yellow flowers with an orange blotch at the base of each.

The dwarf French marigolds, studded with brilliant buttons from yellow to crimson brown and many with handsome variegations. French marigolds with single flowers, such as Legion of Honor, showing a velvety brown cross up on a golden ground, all go to make summer brilliance in the garden. The tall French marigolds are stately and gorgeous, growing to a height of four feet. A newcomer, the Josephine, a velvety single showing the reddest coloring of all the marigolds, is the most useful of the French section for cutting, now a prime favorite in the markets where it is known.

The huge, imbricate globes of the tall African marigolds in lemon, golden yellow and glowing orange are stately subjects for the back of the border and fine for cutting. Then there are dwarf forms of this African type.

Marigolds are the easiest of all annuals to raise from seed. They can be planted in the open ground May 1 and by July will be giving bloom. The French sorts run right up to a bud when only three or four inches tall and then proceed to branch. The dwarf French types are best for beds and massing as well as for edging.

The marigold does not demand rich soil; it flowers more freely if not too well fed. It does insist on full sun. That is its chief requirement. It is one of the most satisfactory of annuals for to date no insect pests annoy it. It flourishes in the hot days of summer and in the cool days of fall takes on a glowing brilliance that makes it one of the most gorgeous plants in the garden. At this season the browns take on a redder tone. Plant marigolds freely.

When the famous clock in St. Paul's Cathedral, London, broke down recently, workman, watch in hand, was stationed in the tower to move the hands of the time-piece forward second by second.

Beauty Hints

If the face powder you now use does not stay on long enough to suit you—does not keep that ugly shine away indefinitely—does not make your skin colorful like a peach—try this new wonderful special French Process Face Powder called MELLO-GLO. Remember the name MELLO-GLO. There's nothing like it. Glass Drugs, Inc., —Adv.

PUTMAN'S
La Grande's Exclusive
Ready-to-Wear and Millinery

April Percolator SPECIAL

A Remarkable Co-operative Offer That Will Appeal to Everyone Who Likes "BETTER COFFEE"

By special arrangement with the Manning-Bowman Co., makers of high-grade ELECTRIC PERCOLATORS, and the distributors of "Royal Club" Coffee, we are able to offer this regular \$11.00 Electric Percolator for—

ONLY \$7.95
Terms is desired!
95c down, \$1.00 per month on your electric service bill

Eastern Oregon Light & Power Company

READ THE OBSERVER CLASSIFIED ADS

Throughout the Northwest Cremation and Vault Entombment

are now closely available

They are Incomparably the Better Ways

PROGRESSIVE people in the Northwest no longer are compelled to follow the crude methods of an outworn age.

The reverent, cleanly and protected rest offered by the beautiful Columbariums of the Portland Crematorium and Mausoleum is now available.

Your own funeral director can make the arrangements and explain fully the "Incomparably Better Ways." Write for our brochure which carries views of our magnificent grounds and buildings.

The Cost of Cremation is only \$45

Portland CREMATORIUM and Mausoleum

PORTLAND OREGON
Cremation or Vault Entombment

Flavor Twins....

A PAIR WITHOUT PARALLEL

Twin tins --- for the two rarest beverages that have ever entered your home! Both Schilling Coffee and Schilling Tea are as potently protected as they are magically flavored.

Both tins are vacuum sealed --- the tea sealed HOT in vacuum --- by an exclusive Schilling process. It alone can bring to you the true tea flavor of the Orient.

Both tins open with a key-wind that really works... leaving a snug-fitting service cover that preserves the flavor down to the last coffee grain or tea-leaf. Both tins contain but a single grade --- the finest --- for there are no inferior Schilling foods.

Both tins are always sold on approval... if you don't declare both the finest you can find -- your grocer returns your money instantly. We pay him. You keep the goods. Your statement is enough.

both are Schilling products

Baking Powder + 19 Spices + 31 Extracts