

HUGE SUM WILL BE SPENT BY U.S.

Forest Road Construction in Northwest to Take Three Millions

More than \$3,000,000 will be spent on forest roads in the Pacific Northwest during the fiscal year beginning July 1, 1927, and ending June 30, 1928. Of this amount Idaho will receive more than has been allotted Oregon and more than a half million more than has been allotted either Montana or Washington. Apportionments ap-

proved for the Pacific Northwest are:
Idaho, forest highways, \$509,501; forest road development, \$626,277; total \$1,135,778.
Oregon, forest highways, \$579,301; forest road development, \$537,105; total \$1,116,406.
Montana, forest highways, \$403,447; forest road development, \$288,252; total \$691,699.
Washington, forest highways, \$325,485; forest road development, \$277,595; total \$603,080.
Alaska, total \$20,562.
Grand total \$3,578,083.
These funds are in addition to the bureau of public road monies that will be used in the separate states on bureau of public road projects and state projects on which the respective states receive federal aid.

GAS TAX SPENT FOR MAINTENANCE

Idaho Figures Show Where Money Taken by State Is Used

BOISE, Ida., Feb. 5.—Thirty-four per cent of Idaho's gasoline tax, which for the two years of 1925 and 1926 amounted to \$2,087,450.62, went to maintenance of highways, as compared with 22 per cent for construction and reconstruction, 22.2 per cent to purchase of equipment, 11 per cent to reimbursement of counties and

highway districts under the terms of chapter 185, 1925 session laws, 5 per cent to supervision of highways, 4.7 per cent to gas tax refunds, \$11,500, or .0055 per cent to administration of the tax, and \$4,000 in 1925 only, to construction of equipment shelters.

This is the substance of a report submitted by the department of public works to Governor H. C. Baldrige and made public at the Governor's office Tuesday. The tax was 2 cents a gallon up to April, 1925, and 3 cents a gallon thereafter.

Expenditures in the various classes were divided as follows:
Construction and re-
construction \$462,258.84
Maintenance of high-
ways 699,469.05
Equipment purchases—
equipment storage
shelters 4,000.00
Administration of gas
tax 11,500.00
Gas tax refunds 97,900.00
Supervision of highways 226,577.78
Reimbursements 226,577.78

The figures of 1925 agree with the total tax, the department explains, while those for 1926 include allotments up to the last of the year. The total receipts for the year are estimated at \$1,175,000, as compared with the actual receipts to date for 1926 of \$1,155,335.00.

\$188,655 in Idaho County
Of the \$1,199,611.01 spent on construction and maintenance during the biennium the report shows, \$188,655.56, the largest allotment, was spent in the Idaho county. About \$135,000 of this total went into construction work on the North and South highway. Kootenai county was second with \$86,635.59, and Bannock county, with \$75,169.02, was third.

The totals spent in the counties of the state during the biennium on both construction and maintenance, follow:

Ada	\$ 30,716.97
Adams	29,274.98
Bannock	75,169.02
Bear Lake	21,147.11
Benevolence	8,988.00
Bingham	23,738.94
Blaine	28,856.06
Boise	2,254.80
Bonner	74,916.56
Bonnaville	4,362.38
Boundary	21,616.79
Butte	13,766.40
Camas
Canyon	18,791.71
Caribou	5,609.50
Cassia	29,744.04
Clatsop	6,129.22
Clearwater	31,984.67
Custer	14,274.34
Elmore	39,111.65
Franklin	12,766.65
Fremont	28,817.28
Gem	1,904.65
Gooding	20,482.42
Idaho	188,655.56
Jefferson	7,344.92
Jerome	24,174.22
Kootenai	86,635.59
Latah	30,126.16
Lemhi	18,656.91
Lewis	50,270.29
Lincoln	14,669.69
Madison	4,736.50
Minidoka	8,518.90
Nox Pater	11,725.52
Owaida	6,666.72
Owyhee	6,767.07
Payette	26,527.63
Power	24,991.05
Shoshone	37,406.19
Teton	3,004.66
Twin Falls	28,521.74
Valley	10,786.07
Washington	35,142.64

Property in the west end of London is still held on leases granted three or four centuries ago.

Old House Will Become Marker For Auto Path

GREENWICH, Conn., Feb. 5 (AP)—New England is setting up an outstanding example of beauty and history to oppose the prevalent reign of hot dog signs on motor roads.

The marker is a renovated farmhouse 227 years old, which will stand at the "Gateway to New England," on the Boston-New York post road. The latter is one of the oldest highways in America, and has been revitalized by tourist traffic.

The house was built in 1700 and was once the home of Thomas Lyon. Members of the Rotary and Lions clubs and other citizens have given \$12,000 to have it moved some distance to the post road and remodeled to serve as an information bureau.

The house is of a type that immediately succeeded the old log cabins. It has walls of hand cut shingles, hand wrought hardware, large fireplaces with chimney ovens, corner cupboards, and big supporting beams that show the work of the axe.

Hundreds of thousands of motorists flock to New England by a score of routes every summer, but more pass this way than any other.

Auto Racing to Start in March

CULVER CITY, Cal. (AP)—The mile and a quarter Culver bowl, unused for almost a year, will be the scene of the first national championship race of the American Automobile association's 1927 racing season March 6. This was announced by P. S. Halbritter, who, with a group of associates, recently leased the plant. Sanction for a 250-mile classic for prizes totaling \$25,000 was received yesterday from the A. A. A. Halbritter said.

GERMAN MOTORIST GIVEN STRONG TEST

LEIPZIG, Germany, Feb. 5 (NEA)—German automobile drivers are being given a severe driving test to determine their ability to handle an automobile in many difficult traffic situations. The motorist is placed in a chair resembling the driving seat of an automobile and having all the regulation apparatus of a car. On a screen in front of the driver pictures show various traffic scenes. The driver manipulates the controls to avoid the dangers the traffic scenes present. Every mistake is automatically registered.

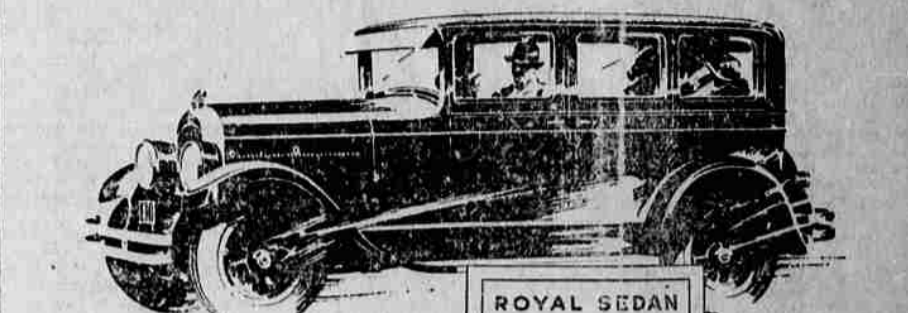
DENATURED ALCOHOL EVAPORATES QUICKLY

Since the denatured alcohol used as an anti-freeze solution for automobile radiators evaporate about three times as quickly as water, a solution of three parts of alcohol and one part of water is generally used when the solution in the radiator goes below the level mark.

REGISTRATION IN 1926, 22 MILLION

Registration of motor vehicles in the United States reached a total of 22,330,000 in 1926, according to a compilation based on reports from the various states.

Tomorrow's Trend
Just as the first Chrysler initiated today's vogue



IN the light of past Chrysler achievements it is easy to appreciate the full significance of the finer Chrysler "70". It is easy to understand how its distinctive style and smartness forecast a fresh vogue in motoring.

Three years ago the first Chrysler with its previously unknown measures of performance, and a host of refinements and improvements new to the industry at its price, created a new school of design, which others promptly emulated.

And now, this finer "70" with its more exquisitely graceful bodies, its greater luxury, its smaller wheels and its more attractive color blendings—and its new low prices—further widens the gap between itself and the conventional and commonplace.

Joined to Chrysler's characteristic speed and

ROYAL SEDAN
\$1595
F. O. B. DETROIT

pick-up, unvarying dependability and enduring long life, proved by hundreds of thousands of owners, this new eye-com-

PELLING beauty and alluring luxury and comfort, leave today's trend as far behind as the original Chrysler "70" advanced beyond the styles of three years ago.

Phaeton \$1395; Sport Phaeton \$1495; Two-passenger Roadster (with Rumble Seat) \$1495; Brougham \$1525; Two-passenger Coupe (with Rumble Seat) \$1545; Royal Sedan \$1595; Two-passenger Convertible Cabriolet (with Rumble Seat) \$1745; Crown Sedan \$1795. All prices f.o.b. Detroit, subject to current Federal excise tax.

All Chrysler cars are protected against theft under the Fedco System. All Chrysler dealers are in position to extend the convenience of time payments. Ask about Chrysler's attractive plan.

CHRYSLER "70"
CHRYSLER MODEL NUMBERS MEAN MILES PER HOUR

L. W. WEEKS
Jefferson Ave. Telephone 180-J

Veltex

One of a Quality Pair

This tested motor oil is keeping hundreds of automobiles humming over the highways to the keen satisfaction of their owners. It comes in every grade—from the heaviest to our special light oil for Fords.

TRY VELTEX NEXT TIME

Fletcher Oil Company

First Independent in State.

We give away more tire miles than any dealer in La Grande

Big hearted? No sir! But we're dead sure that La Grande car owners are smart enough to buy their tires where they get the most miles for their money.

Here's what we do. We sell Good-year Tires. We maintain complete service facilities for giving our customers every convenience, and to enable them to get every last mile Goodyear builds into these wonderful tires.

We put tires on your rims correctly, inflate them to the proper pressure — also inspect rims, valves, wheel alignment.

Come in and get some of this free tire mileage.



30x3 1/2
AWT Clincher Cord
\$11.65

29x4.40
Pathfinder Balloon
\$10.95

30x4.95
Pathfinder Balloon
\$14.65

32x4
AWT SS Cord
\$19.35

31x5.25
Gr AWT Balloon
\$21.95

Always use Good-year Tubes — for satisfaction and economy — we have Goodyears at a variety of prices.

How to read Percentages

Were Dodge Brothers to sell 100 motor cars one year and 200 motor cars the next, they could truthfully announce that their sales had increased 100% in a single year. Yet they would only have sold 300 motor cars in all.

In other words, PERCENTAGE of annual gain is not conclusive. THE NUMBER of cars sold is the true test.

That Dodge Brothers sales in 1926 showed an increase of 27.6% over 1925 is not the MAJOR fact to consider—striking as it is.

But that Dodge Brothers sold 259,967 cars in 1925, and then in 1926 sold 331,764—a gain of 71,797 sales in twelve months—tells a story of growth that stands out like a tower on the skyline of the industry.

Three hundred and thirty-one thousand buyers LAST year! Many more vital improvements added THIS year! No increase in price! Three powerful arguments for earnestly investigating this smart and sturdy product before deciding what to buy!

Touring car	\$ 975
Coupe	1,030
Standard Sedan	1,085
Special Sedan	1,140
DeLuxe Sedan	1,275

L. C. SMITH
5th and Depot

We Also Sell Dependable Used Cars

DODGE BROTHERS MOTOR CARS

Marks of Distinction
made possible by

Volume Production
The Most Beautiful Chevrolet in Chevrolet History

In addition to masterly new bodies by Fisher—in addition to a host of mechanical improvements typified by AC oil filter and AC air cleaner—the Most Beautiful Chevrolet offers certain features heretofore regarded as marks of distinction on the costliest cars. These are made possible at Chevrolet's amazingly reduced prices only because volume production results in definite economies and because Chevrolet now, as always, passes these savings on to the buyer in the form of added value.

No other car, as low in price, offers such features as fish-tail modeling, full-crown one-piece fenders, bullet-type lamps and the like. Come in—and see for yourself!

FISH-TAIL MODELING—adds a distinguished sweep to the rear of the Roadster, Coupe and Sport Cabriolet.

FULL-CROWN FENDERS—(one-piece) which lend substantial grace to the sweeping body lines.

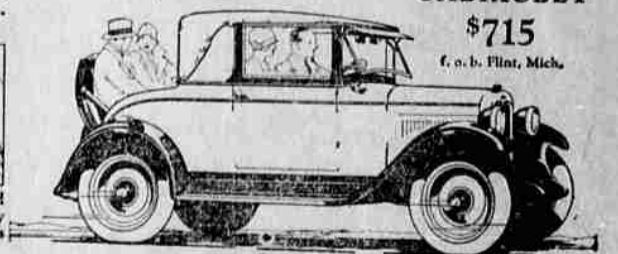
BULLET-TYPE HEAD LAMPS—and cowl lamps. Up-to-the-minute in style.

TIRE CARRIER—mounted free from the body; rigidly supported by steel brackets.

Reduced Prices!

The Coach	\$595
The Coupe	\$625
The Sedan	\$695
The Landau	\$745
The Touring or Roadster	\$525
1-Ton Truck (Chassis Only)	\$495
1/2-Ton Truck (Chassis Only)	\$395

Balloon Tires Now Standard On All Models. All prices f.o.b. Flint, Mich.



The Sport CABRIOLET
\$715
f. o. b. Flint, Mich.

Blue Mountain Garage
M. A. HARRISON, Mgr. Opposite Postoffice

Bohnenkamp's

QUALITY AT LOW COST