



AUTOMOBILE NEWS

TO OIL HIGHWAY IN 1927 SEASON

The Dalles - California Strip of Road Will Be Improved, It Is Said

KLAMATH FALLS, Ore., Jan. 23.—Almost immediate development of this section as a tourist mecca is expected to follow the action of the state highway commission in deciding to oil The Dalles-California highway from The Dalles to this city.

Thus travelers going up and down the coast will use the Pacific highway one way and The Dalles-California highway the other.

Of all Oregon counties, Klamath has lathered the state highway commission less than any other, according to word brought back by the delegation that waited on the commission in Portland a few days ago requesting a road program for the coming year. In fact, Klamath county has never had a representative before the state body since the inception of road building in the state.

Probably this is one reason men from here met with such a hearty welcome and succeeded in getting a program pledged that will be of great improvement to the county.

Entire Route to Be Oiled

The Dalles-California highway is to be oiled from The Dalles to Klamath Falls. Also the extension to Merrill, which is really the last link of that highway, is to be rebuilt, resurfaced and oiled and considerable work is scheduled for the Green Springs mountain highway to Ashland.

Charles Wanner, chief of the inland southern district with headquarters at Bend, refused to recommend oiling the road to Ashland as a whole, for he stated there is too much hinder in the construction from Klamath to the top of the mountain, and until that is rebuilt, oiling is not practical.

This bit of information comes as a little surprise, for the cry for a long time was that there was insufficient binder. On the other side of the hill—from the top to Ashland—the road will be widened and oiled.

Klamath Delegation Active

Those who presented the Klamath county road case to the commission included County Judge Hurrell, Commissioners Martin and Short, Robert Kuykendall, W. W. McNealy, Frank Ira White and Secretary of Chamber of Commerce Lynn P. Sablin. Judge Goddard, the new county judge, and Horace Dunlap, the commissioner-elect, were unable to attend this meeting of the state highway commission. In the future they will be present.

Stockholm to Paris A-Horse



There's many a long mile between Stockholm, Sweden, and Paris, but Mile. Linde de Klinckowstrom, daughter of a baron, is courageous—she covered them all on horseback. She stopped in Brussels to report the wedding of Princess Astrid and Prince Leopold of Swedish newspapers. Here she is with her mount.

Body Designs of Nash Models Is Given Praise

The New Nash Ambassador and Cavalier, with their French type roofs and forward sweeping backs, have been an outstanding attraction at the big automobile shows held so far this year, it is said. Crowds which jammed the Nash booth at the New York, Philadelphia, Buffalo, Brooklyn, Cleveland, Cincinnati, and other places, were outspoken in their enthusiasm for these newest Nash creations the

local dealers, Trachel and Trickell declare. The new Nash body conception is being referred to as a development in the history of American closed car craftsmanship and it is prophesied that it would exert an influence upon the whole future trend of enclosed car body design in this country.

Of interest in the manner in which Nash body artists have treated the roofline and the rear of the body. Their contours and symmetry though strongly suggestive of the French mode are original with Nash. And the "town car" effect at the front is also a Nash innovation.

FRUSTRATING BURGLARS

NEW YORK — The up-to-date way to frustrate a burglar is to let him into invisible light, his interruption of the rays setting off an alarm. The possibilities of such were shown by Dr. E. E. Free, of New York university, in demonstrating how light could make sound.

STAGES ATTACK STATE TAX BILL

Bus Companies File Complaint in Circuit Court in Salem

SALEM, Ore., Jan. 23 (AP)—Attaching the constitutionality of the motor stage tax measure, passed by the people at the last election on referendum from the legislature, Oregon stages and J. W. Parker Stage lines, have filed a complaint in circuit court here declaring the measure unconstitutional and asking for a permanent injunction against its enforcement. The two stage lines state that stage lines in the state represent a property and equipment investment of about \$2,000,000 and that they all will be detrimentally affected by enforcement of the legislation in question and that a number of them will be forced out of business and be compelled to quit, if it is enforced.

The complaint alleges that the law attempts to impose unjust, arbitrary, oppressive, confiscatory and unconstitutional taxation, through its provision of a tax of three-fourths of a mill per passenger mile. It alleges that the bill will deprive the stage lines of their property without due process of law, and that it denies equal protection of the laws.

It is further alleged that the bill is unconstitutional, in that it embraces two subjects in its title, one providing for revenue raising and the other for the supervision of motor vehicles.

A general and a colonel of the United States army were walking along Pennsylvania avenue, Washington, and met many privates who saluted them. Every time the colonel returned the salute, he murmured: "Same to you!" Finally the general inquired: "Why do you always say, 'Same to you'?" The colonel replied: "I've been a private myself, and I know what they are thinking."

"70" Six Called Leader of Field By Its Builders

With the 1926 motor year passing into history, Willy-Overland officials cite the performance and sales records established by the Willys-Knight Model "70" during the last 12 months as the basis for their claim that this Knight powered six-cylinder car stands as a leader in its price class.

Company officials assert that the "70" Willys-Knight met an immediate response from car buyers with its introduction to the market and that the demand for this six-cylinder product grew in volume necessitating a high tide factory production during the entire year to keep pace with the orders from all sections of the country. The periodical slumps in the automotive sales field did not affect the demand for this "70" model, factory officials assert.

This achievement in the sales field is taken as a tribute for the performance of the "70" Willys-Knight and the reputation it has made in its price field. Factory officials cite the high rate of speed that can be maintained by a Willys-Knight "70" without a strain and the power development of the Knight sleeve-valve motor, capable they claim of mastering the steepest grades in high gear. They also cite its fuel and oil economy qualities as another factor that has placed it in a position of leadership in its class.

HEALTH OF INFELDER IMPROVING

The health of Johnny Butler will be an important part of the Brooklyn baseball equation this season. The shortstop cost Manager Wilbert Robinson a whole team for he gave Minneapolis nine players for him, only to have him spend a considerable part of last season in a hospital. He reported suffering from influenza and later developed stomach trouble. If he is in shape this year he will take his place among the league's outstanding infielders thinks "Uncle Wilbert."

GARAGE GOSSIP

Buicks on Road—Jennings and Shumate are expecting a shipment of Buick cars in a few days. Three sedans are now on the road here.

Salesman Ill—O. D. Scott, Buick salesman was ill this week. He returned to work Friday.

Lofters Here—Oscar L. Letterta, wholesale manager for the Packard Automobile company, was here this week calling on A. R. Trachsel, local dealer.

Will Go to Portland—W. D. Hanks, Overland-Willys Knight dealer here, is planning a trip to Portland soon to attend a meeting of all Oregon, Washington and Idaho Overland and Willys Knight dealers. Several men from the factory will be there, including John N. Willys president of the company; L. G. Peed, general sales manager; O. P. Millburn, assistant sales manager; R. H. Rowland, sales promoter manager and Ward M. Canaday, president of the U. R. advertising corporation.

Has Ethyl Gas—The L. C. Smith garage is now handling the new Ethyl gas, put out by the Union Oil company. Smith's garage is the second to have this new gasoline, the Blue Mountain garage having it first.

Here This Week—E. H. Merlin, district Dodge representative, of Seattle, Wash., was in La Grande this week. He called on L. C. Smith, local Dodge dealer.

With Studebaker Garage—Frank Apling has accepted a position with the Studebaker garage as salesman.

Stoutemeyer at Walla Walla—H. I. Stoutemeyer, Franklin representative here, spent Friday of this week at Walla Walla.

Wash. He plans to drive a new model Franklin back to La Grande, which will be on display in the show room of the Nash garage.

In Portland—M. J. Goss, Studebaker representative here, spent a part of this week in Portland, called there with other dealers from all over the Northwest to see the new Erskine. The car will be shown here in about a month Mr. Goss says.

At North Powder Yesterday—L. H. Irwin, Studebaker salesman, spent Friday at North Powder.

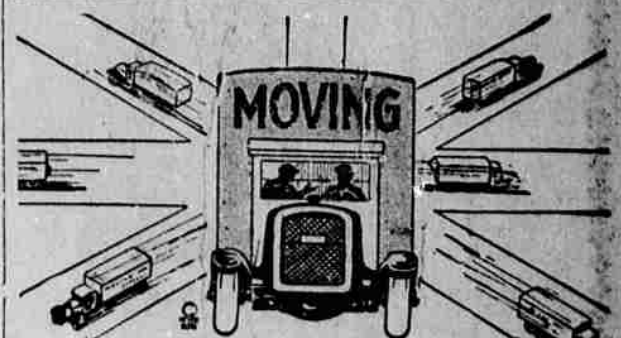
Stopped Here—Mr. and Mrs. Ernest Pribilsky passed through La Grande on their way home to Baker from Walla

Walla, Wash., Friday. They leave the Baker Tire shop at Baker.

Credit Plan Started—In December Johns Brothers started a credit plan on tires and tubes which so far has proved to be a great success, they say. Under this plan they sell on a small payment down and the balance in 12 equal payments.

COLUMBIA WINS—PORTLAND, Ore., Jan. 23 (AP)—The Columbia university quintet defeated the University of Oregon freshmen basketball team 24 to 21 here last night.

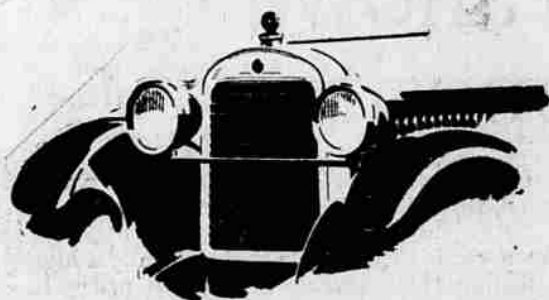
Nobody's feet are as large as tan shoes make them look.



WE DO ALL KINDS OF HAULING
Any Time - Anywhere - Any Place
Just leave your moving problems to us.
A phone call is sufficient.

FRANK CLEAVINGER
Office Phone Main 85 Res. Phone 300-W

Engineered to Provide Lowest Maintenance and Operation Cost



The New ESSEX SUPER-SIX

Entirely new in Appearance and Performance with New Bodies in a variety of Color



SEDAN \$715



COACH \$735



COUPE \$715



4-PASS. SPEEDSTER \$750

In performance as well as appearance, the Essex Super-Six is an entirely new car.

It reveals the capacity of the Super-Six principle. It attains an engineering triumph in low maintenance and operating cost.

It possesses such stamina that 50 miles an hour all day long is an easy accomplishment. And so nimble and alert is its action that no car will surpass the quickness with which it may be driven through traffic or in touring, whether the trip is one of a few city blocks or hundreds of miles. To both driver and passengers, there is rare comfort in any kind of going.

Unusual accessibility means big savings in replacement, service and all shop work. Economy in fuel and oil is also a notable feature of the new Essex Super-Six.

With four beautiful new bodies—all smart in line, finish and upholstery, it is easily the paramount value of Essex history.

All prices f. o. b. Detroit, plus war excise tax

LEDBETTER GARAGE
Adams Avenue

The Squeaks and Noises Can't All Be Blamed On The Weather!

When you drive your car down the street or out on the highway—are you bothered by too many squeaks and too much engine noise to suit you? Most cars are that way in the winter time.

But you can't blame it all on the winter weather—there are other reasons. How long since you had the car greased all around? Probably longer than you think—it's easy to forget greasing in the winter time when most driving is brief. That may remedy a lot of the squeaky places—and it's a good guard against repair bills, too.

And how long since the oil was drained in your crankcase? How much of the time do you run with the choker partly out? That's something you forget about in cold weather, too. Gasoline gets mixed with your engine oil—it is thinned down—loses its lubricating quality. Engine noise and engine wear is sure to result.

Try a crankcase full of Golden Texaco. Just try it—keep check on it. Examine its body the next time your oil is drained. Texaco flows at zero, retains strong lubricating body. Hundreds of motorists in this territory have become exclusive Texaco users after making personal tests.

Drive in—or if you're busy, phone Main 165 and let us get your car, service it, and return it. That's one feature of Playle's Superior Service.

Fisk Tires and Tubes

PLAYLE OIL CO.

Texaco Gas and Oil

"Playle's Superior Service—Always As Near As Your Telephone"