



# Building and Improvement



## RECORD YEAR IN BUILDING LIKELY

Several Large Projects Expected to Boost the Total Above \$500,000

The greatest building year in history, is the forecast of local business men for 1927. With several homes already contracted and major work under way, several big projects loom that are expected to bring the total past the half million mark, which will establish a new annual construction record.

The Eastern Oregon normal school, for which an appropriation of \$175,000 will be requested.

A national guard armory, probably to cost \$80,000.

A seven-story hotel at Fourth and Adams, to cost around a quarter of a million dollars.

Rebuilding of the Foley hotel and construction of a seven-story hotel on the Foley corner.

Several apartment houses in the residential districts.

Many local people believe that the construction of the Eastern Oregon normal school will serve as an impetus to home builders and apartment house backers.

It is believed that dormitories to adequately house the students may not be completed at first, because of the condition of state finances; and it is also believed that the construction of such an institution of higher learning will result in many new families coming here, which will increase the demands for homes and apartments.

With January ending an end the building permits issued so far total \$10,500, according to J. E. Stearns, city recorder.

## No Lawyers Permitted In This Court

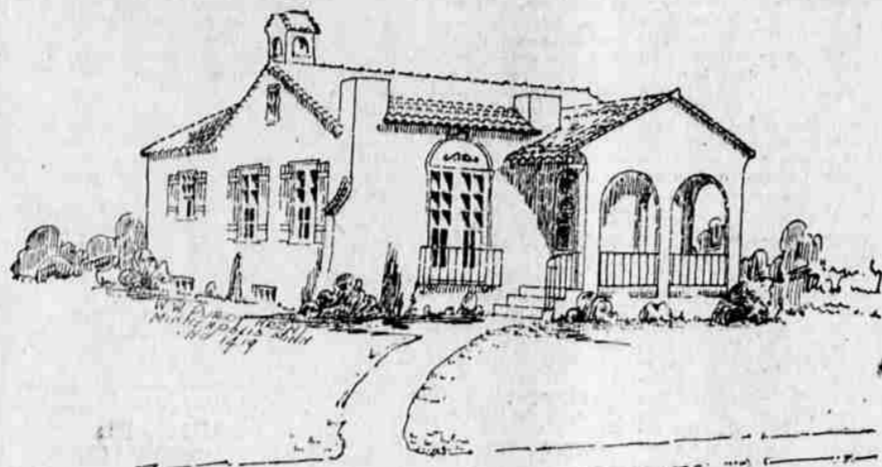
AWICHTA, Kan., Jan. 24 (AP)—A court in which no lawyer is admitted, except as a spectator, where there are no court attaches, no office equipment, no permanent records and which meets at the time and place most suitable to the litigants, is conducted here by David D. Leahy, veteran newspaperman.

The jurisdiction of the court is limited to the city and to suits of money not to exceed \$20. Often cases involving less than a dollar are heard. Ordinarily after Judge Leahy has rendered a decision, payment is made on the spot. When a judgment is not paid he sends notice of it to the clerk of the district court and it is executed in the same way as any other judgments are executed.

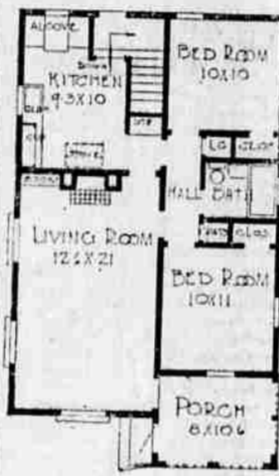
The court was created by the legislature. About 10 years ago Judge Leahy took it over. In less than a year he has heard more than 200 cases and not one has been appealed.

The Right Hon. Stanley M. Bruce, premier of Australia, says America is "Indecently modest." That's the first hint we've heard that this country was bashful.

## A SPANISH BUNGALOW



By W. W. Purdy  
The accompanying design, a Spanish bungalow, is very attractive, the plan, while small, is most convenient and the price at \$4900 to \$5000, exclusive of heating and plumbing, should prove most interesting to those contemplating building a small home of the cottage type.



Two good bedrooms.

The kitchen portion is well planned, the breakfast alcove serves as a dining room, except when guests are entertained, when a drop leaf table is prepared in the end of the living room.

Steps lead down from the kitchen to a grade entrance which also serves as a rear entrance. There is a full basement with the usual furnace room, fruit and vegetable rooms, storage space and laundry.

Oak and pine painted woodwork, with oak floors, tinted plaster walls. The exterior walls are of frame construction using metal lath, over which cement plaster is used, the light colored plaster, in contrast to the bright red Spanish tile roof and green blinds makes a very pleasing color combination.

Wheat receipts at Kansas City in 1926 were 87,438,000 bushels, valued at \$132,468,570. Receipts of wheat, corn, kafir, corn, milo, milo, oats, rye, and barley totaled 112,828,800 bushels and were valued at \$149,866,925.

## Here And There

VALE—Government soon to start work on Warm Springs drainage system.

NEWBERG—Large crew of men begin work on new pulp and paper mill.

MOUNT ANGEL—First units, to cost \$300,000, will be started in rebuilding of burned Mount Angel college. Total cost will be \$750,000.

PORTLAND—Multnomah county has 131,225 buildings, including 74,547 homes.

COTTAGE GROVE—Building permits for 1926 reached \$400,000.

HOOD RIVER—New high school building is being rushed to completion.

THE DALLES—United Brethren will build \$15,000 church here.

FARADAY—Griswold Lumber company building sawmill to cut 20,000 feet daily.

CHLOQUIN—Building here last year approximated \$250,000.

SELLWOOD—First unit to be built for St. John's Evangelical church.

KLAMATH FALLS—Willard hotel will build six-story addition.

Queen Marie says she is going to write a book of fairy tales to be sold in this country. Evidently the queen has sized us up quite accurately.

A seat certainly is becoming costly in this country, whether it's in the stock exchange, the board of trade, the theater or the senate.

## ORE OUTPUT IN OREGON IS LESS

Values of Metals from State's Mines Decrease 22 Per Cent

The value of gold, silver, copper, and lead produced in Oregon in 1926, according to the estimate of J. M. Hill, of the bureau of mines, department of commerce, was \$334,500, a decrease of \$96,435 or 22 per cent as compared with the value of metals produced in 1925. The output of gold decreased 23 per cent, largely because of the decrease in dredge yield. The output of copper increased 121 per cent and lead 112 per cent as compared with the output of those metals in 1925.

In 1926 it is estimated that 12,400 ounces of gold were produced in Oregon, valued at \$281,000, as compared with 18,983 ounces, valued at \$292,408 in 1925. The Buffalo Monitor, Empire dredge, Cornucopia and Bunker Hill mines were the largest producers of gold. The dry year seriously interfered with mining in all sections of the state, the output from placer mines fell off considerably, and there was a slight decrease in gold production from deep mines.

The silver production of Oregon in 1926 was 29,400 ounces, valued at \$18,300 as compared with 32,732 ounces, valued at \$22,758 in 1925, a decrease of 10 per cent in quantity and 20 in value. The largest production of silver was from concentrates shipped from the Granite district, though copper concentrates and gold-silver ore produced in eastern Oregon added materially to the silver yield.

The Homestead Iron Dyke copper mine began shipping late in September after a shut-down of several months. Copper was recovered from mixed concentrates shipped from the Granite district. The total production of copper in Oregon in 1926 was 246,000 pounds, valued at \$4,000, as compared with 166,325 pounds valued at \$15,008 in 1925.

The lead yield in 1926 was 12,900 pounds, valued at \$1,900, as compared with 5,672 pounds valued at \$488 in 1925. The lead was a by-product of gold-silver concentrates shipped from Eastern Oregon.

Eastern Oregon  
In Eastern Oregon the largest producers of gold from quartz mines were the Cornucopia at Cornucopia, the Buffalo Monitor at Granite, the Snow Creek and the Dex in the Greenhorn district, and the Rainbow in the Morrison Basin district. The Superior dredge near Bridgeport worked half the

year, being hampered by low water, and the Empire dredge near John Day was idle several weeks during low water in the summer. The Idaho Copper corporation started production at the Homestead Iron Dyke mine in the early fall. No ore was shipped from the Day Horse mine. Development at the Halsey-Kirkham near Sumpter was further advanced and it is reported that the mill will start early in 1927. Development was continued on the various copper properties near Keating and at the Miller Mountain mines near Prairie City. The smelter at Sumpter was taken over by the Northwestern Smelting & Refining Company during the summer, but was not operated during 1926.

In Southwestern Oregon there was considerable development work accomplished on various quartz properties near Applegate, Gallego, Gold Hill, and Leland, but milling was limited by shortage of water and production from quartz mines, except for the Bunker Hill, was not up to expectations. The dry season likewise was hard on the placer mines and short runs were the rule, though a number of placer mines were in shape to produce.

New York has a new police regulation giving pedestrians the

right of way at crossings. It has been rigorously observed by the pedestrians.

No more ashes to clean out if you use a Westinghouse Electric Range.

H & S Electric  
F. L. Robinson  
Sommer Hotel Bldg.  
Phone 393-W

That's why our service excels



Fred Spaeth  
PLUMBING, HEATING and SHEET METAL WORKS

and our workmanship is the best.

108 FIR STREET  
PHONE MAIN

SPICK 586 SPAN



## BEAUTY --the cry of the age

Articles are not longer classified by Necessity, Utility or Practicability but by BEAUTY and CONVENIENCE

Make these your slogan as you install your LIGHTING FIXTURES We have the Latest Things at the Lowest Prices.

La Grande Electric Co.  
"Everything Electrical"  
1412 Adams Ave.



A new man bought property in La Grande and moved his family here. As his house is somewhat out of repair they had to have considerable building material. His neighbors told him that he could do better by buying his requirements of the Pratt Lumber Company. He said, "Mr. Pratt, all of your neighbors speak very highly of you." We told him we were glad to hear that, but we also told him that he might run across a man or a woman that wouldn't speak so highly. They might call us Bohemians, hypocrites, vagabonds, curb-stoners, or a fly-by-night lumberman, and they might not. Our aim is to treat everybody just like we would like to be treated. If you like us, tell other people—if you don't like us, tell us.

We are getting lined up for one of the biggest years we have ever had. We are already getting inquiries about paint and oil for up and down the line. Remember, we are selling on the wholesale-to-consumer plan.

I picked up a mail order book, yesterday that came in the mail and I found out that our guaranteed roofing is—being at a much lower figure and that our guaranteed paint is also about a dollar cheaper than theirs, and we are not talking about the cheapest grade of paint, either, as there is nothing that is sold but what someone else can make it cheaper and sell it for less.

Our strictly pure linseed oil doesn't contain a drop of fish oil but it is just the same as you buy from any legitimate dealer. The only difference there would be is the price, and it shouldn't scare anyone to death to be able to save a little money. Some people think because you have the price down to hell-rock there must be something wrong with the stuff. I have a good many hearty laughs sometimes when I think about farmers asking me to show them some of the rats we sell and about a woman wanting to take some of our linseed oil. She made the remark that it tasted just like fish oil to her. I told her she didn't need to taste fish oil—she could smell it a block away. I also offered her \$20 if she could prove there was a drop of fish oil in the pure linseed oil. She may have been buying cod fish oil. I had better stop this ad for today or I will be saying too much.

Claude C. Pratt  
Lumber Co.

"The Poor Man's Friend"  
Near Foundry, Phone Main 348  
No Sunday Business.

## now!

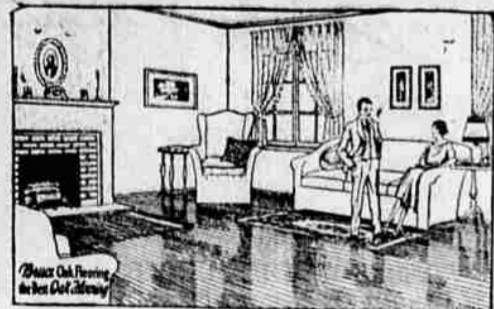
The new EASY WASHER on view



Washes and dries at the same time. Not a drop of water to lift or carry

THE new Easy Washer—the most amazing development ever made in washing clothes, is here. The small tub dries a whole batch of clothes—ten single sheets—in three minutes. Meanwhile, the large tub washes a second batch. Twenty sheets handled at once—your washing done in half the time with half the work. No water to lift or carry; not a drop of water wasted. The Easy even empties itself when you are through washing. Let us do a week's washing free in your own home. No cost or obligation. Phone today.

EASTERN OREGON LIGHT & POWER CO.  
Always at Your Service



## You Can Have Oak Floors in your old home

If YOUR home has old, worn floors, unattractive, hard to keep clean—Why not have oak laid on top of the old floor and thereby transform the entire house! Bruce Oak Flooring [the best oak flooring]

is also made in 3/8 inch thickness especially for this purpose. It can be laid quickly and at reasonable cost. It will make your home modern. It will make it attractive. It will increase its value.

ESTIMATES CHEERFULLY FURNISHED  
PHONE US TODAY.

Van Petten Lumber Company  
Phone Main 732 for Service.