

SOCIETY NEWS

Episcopal Guild Members Gather In Annual Meet

Thirty-five members attended the annual meeting of St. Peter's Episcopal guild Wednesday evening at Honan hall, when officers for the new year were elected.

Mrs. H. A. Zurbick was re-elected president of the guild and her assistants will be Mrs. George T. Cochran, vice president; Mrs. Lee Warnick, secretary and Mrs. E. L. Holmes, treasurer.

Those elected to the board of directors were Mrs. Anna Pollack, Mrs. J. D. Slater and Mrs. L. H. Stinson.

The guild this year will work toward the installation of a pipe organ in the new Episcopal church here. Plans are already well under way and the organ, which will be one of the best on the Pacific coast it is said, will probably be put in early in the fall.

Mrs. Lee Warnick is chairman of the organ fund committee, and other members of the committee are Mrs. H. N. Ashby, Mrs. H. B. Colburn, Mrs. Chipley, Mrs. I. E. Westenhaver and Mrs. A. W. T. Milne.

The Rev. Oliver Riley presided over the meeting during the election of officers. Several other committees were appointed to carry on the work of the guild during 1927.

The art department of the Neighborhood club held an interesting meeting yesterday in the club rooms in the library building.

Mrs. C. E. Happersett and Mrs. W. B. Pickens had charge of the program, which started the study of Dutch painters, the review of Flemish artists having been completed at the last meeting.

Mrs. Happersett gave a talk on "Holland, the Land and the People," and Mrs. Pickens spoke on Franz Hals and contemporaries.

Mrs. F. A. Epling reviewed briefly her talk on Van Dyke, which was given at the last meeting of the department.

Officers for the ensuing year were elected yesterday afternoon when the Riverside Ladies' Aid society met at the home of Mrs. G. E. Lupter. Mrs. Lupter was elected president of the society; Mrs. Clara Briggs, vice president; Mrs. Arthur Huff, secretary and Mrs. Maxine Treasurer.

A sociable followed the business session, when the hostess served refreshments. Fourteen members were present for the meeting.

Club Meets With Mr., Mrs. Nowland

The Swastika Bridge club met last evening at the home of Mr. and Mrs. Walter Nowland for the first time since adjournment during the holiday season.

Bridge was the diversion and Mrs. Walter Perry made high score among the women club members. The men's prize went to Lowell Williamson and the guest prize to Mrs. Lee Hanford.

Bouquets of sweetpeas were used to decorate the rooms. A two-course luncheon followed the card games.

The next meeting of the club will be Jan. 30, when Mr. and Mrs. Lowell Williamson will entertain.

The N. B. B. club met yesterday afternoon for the first time since the holidays with Mrs. Clyde Davis as hostess. Three tables of bridge were at play and Mrs. G. Williams made high score. The second prize went to Mrs. E. C. Coughenower.

Luncheon was served by the hostess after the card games.

The club will meet next Thursday at the home of Mrs. H. W. Riley.

Mrs. Lou M. Cantrell and Charles J. Lechlitter, both of La Grande, were united in marriage at the Methodist Episcopal church south at four o'clock Wednesday afternoon by the Rev. J. A. Hall, pastor of the church.

Mr. and Mrs. Ira Cantrell, Mr. and Mrs. James Stacey and Earnest Vaughan were present for the ceremony.

Mr. and Mrs. Lechlitter will make this city their home.

Birthday Party At Vedder Home

Little Miss Nelda Smith was the inspiration for a party Wednesday afternoon from three until five o'clock at the home of her aunt, Mrs. W. Vedder, honoring her seventh birthday anniversary. The

12 children present enjoyed games for a time after which luncheon was served. It was decided to have a color scheme of pink and white and in the table decorations. A birthday cake, in pink and white, with seven lighted candles served as a pretty centerpiece.

The guests were Betty Mae Allen, Dicky Allen, David Douglas, Catherine Williamson, Wayne Williamson, Lloyd Davies, Margaret Davies, Kathleen Stearns, Evelyn Stearns, Vivian Allen, Ida Mary Prouty and Marian Smith.

The Victor's class of the Christian church Sunday school held a business and good-time meeting in the church parlors this week. Class colors chosen were salmon pink and green. It was decided to have a Washington sociable Feb. 22.

Plans were made for the next meeting of the class Jan. 23 at the home of Marian Neilson, 505 N. avenue.

After an hour of games and music refreshments were served.

Mrs. C. V. Dunn, Cecelia Reinholdt and Mrs. Holley were guests present for the meeting in addition to the 13 members and their teacher, Mrs. Frank Hardesty.

THE PARK—A New Year's dinner was held at the Bob Miller home to celebrate the birthday anniversaries of Marie Miller and Oello Vandevanter. Dinner was served at noon and in the evening the young people enjoyed dancing, after which refreshments were served at midnight.

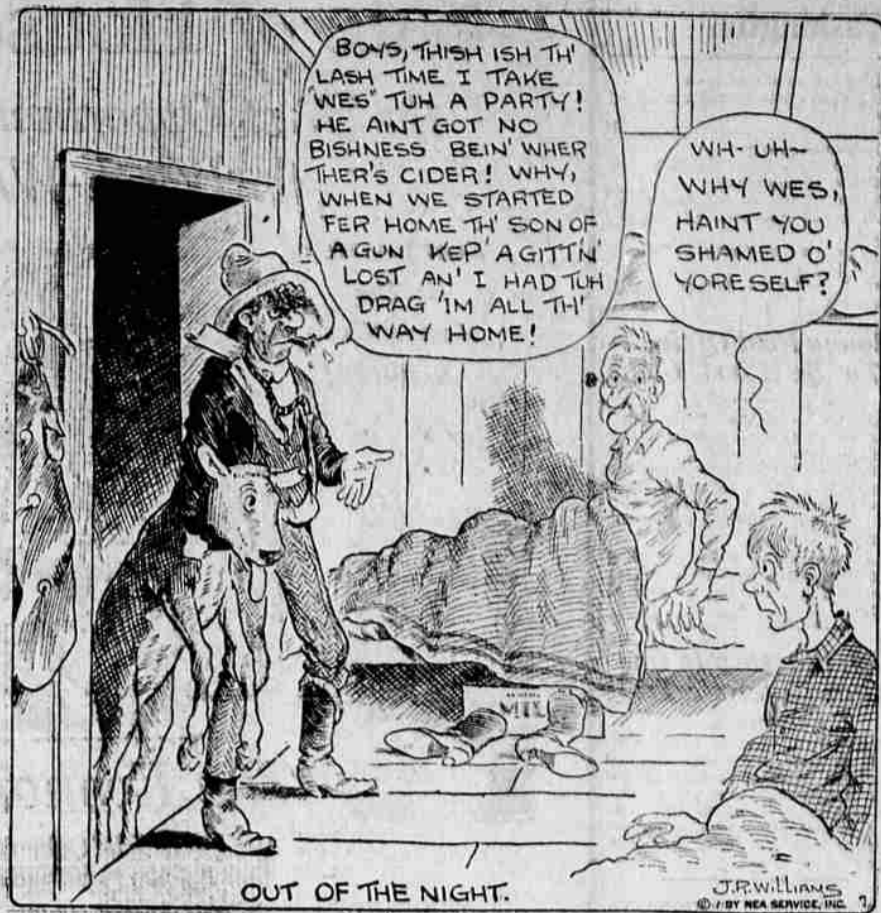
Nineteen guests were present including Mr. and Mrs. Bert Vandevanter and children; Mr. and Mrs. Clarence Vanorder, and children and Ida, Jack and Bobbie Hunter.

MOON DRUG CO.
Agents For
The Owl Drug Co.

Claude C. Pratt Lumber Co.
"The Poor Man's Friend"
Near Foundry. Phone Main 548
No Sunday Business.

OUT OUR WAY

By Williams



OUT OF THE NIGHT.

J.R. Williams
© 1927 NEA SERVICE, INC.

MENUS

By Sister Mary

BREAKFAST—California grapes, cereal, thin cream, crisp graham toast, marmalade, soft cooked eggs, milk, coffee.

LUNCHEON—Cream of celery soup, toasted crackers, stuffed prune salad, graham bread, eggless rolled oats cookies, milk, tea.

DINNER—Pot roast of beef, mashed potatoes, brown gravy, buttered brussels sprouts, head lettuce, grapefruit pie, bran rolls, milk, coffee.

Do you ever eat head lettuce without any dressing? The lettuce must be perfectly crisp. If salt is wanted, each person should use it as preferred. The person who wants to "eat and grow thin" may eat all the lettuce she wants if it has no rich dressing over it, so it behooves her to learn to prepare head lettuce "a la naturelle" if she does not already.

Eggless Rolled Oats Cookies
Two cups rolled oats, 1/2 cup butter, 1/4 cup lard, 1 cup granulated sugar, 1/2 cup sour milk, 1/2 teaspoon soda, 1/4 teaspoon salt, 2 cups flour (about), 1/2 pound dates, 1/4 cup light brown sugar, 1 cup water, 1/2 teaspoon vanilla.

Put rolled oats through food chopper. Cream shortening and slowly beat in sugar. Add rolled oats alternately with sour milk. Mix and sift soda and salt with first cup of flour and add to the first mixture, using enough flour to make a dough stiff enough to roll. Roll thin and cut with cookie cutter. Put about one tea-

spoonful of the filling on half the cookies, cover with remaining cookies, press edges together and bake in a hot oven for 15 minutes.

To make the filling, wash and stone dates. Cut in small pieces and add sugar and water. Bring to the boiling point and cook until thick, about twenty minutes. Cool and add vanilla before using. (Copyright, 1926, NEA Service, Inc.)

HUBBY GETS DECREE

CAMDEN, N. J.—Futurity affection can be a ground for divorce. Edgar Cunningham, 54, testified he had been kissing Mrs. Edward Davis, 37, ever since she was four years old and that his attentions were merely those of a father. Because Mrs. Davis disobeyed husband's orders to discontinue the kisses, the husband was given a decree.

Before setting out on their long journey to market, geese of Vilna, Poland, are made to walk through first tar and then sand. A protection to their feet is thus provided.

CHILD DAUGHTER, who has such painted curtains at her new house in Chelsea, England. Her bright blue walled drawing room has an amusing doll's house effect given to it by the painted windows.

CAMEL'S HAIR SUITS
Camel's hair jumper suits in natural color, the tint of London on a foggy November day, are becoming increasingly popular. Although this color is neither becoming to the wearer nor cheering to its beholder, the material is soft.

STONE'S SERVICE
Every individual person who buys groceries or clothing has a reason for shopping at the particular place from where they buy. That reason may be price, service, or only whim, but it is reason enough for them to shop at their regular place. We are satisfying the majority in towns where we are located that our stores are good places to trade.

Our corps of trained salesmen is the result of years of effort in this direction. You will always find them courteous and helpful. Our prices are low and inviting. Not merely a few items priced low for bait, but every article in our store with the same low margin of profit. If you are not already one of our many satisfied customers, investigate and we are sure that you will find a reason for trading with us.

Prunes—5 Pounds 35¢
Oregon Grown

Catsup—18 ounce bottle 19¢

Lettuce—Imperial Valley 10¢ Each

Peaches—2 For 49¢
Mission brand

Fancy Apricots—2 For 49¢
2 1/2 size tin.

Guillard's Chocolate—1 Pound 23¢

Quick Naptha Soap Chips—2 For 45¢

P. & G. Soap—10 bars 39¢

Ehrman's Best Shrimp—2 For 35¢

Peas—3 For 39¢
Bulls Eye brand

Jelly—10 Pounds In Pails \$1.59

Crackers—3-Lb. Can. Plain or Salted 43¢

Englishwoman Paints Curtain On Window Pane

Another fashionable fad is to take down the ordinary window curtains and have imitation curtains painted on the windows. The fad was started by Mrs. William-Ellis, St. Lee Strachey's nov-

el daughter, who has such painted curtains at her new house in Chelsea, England. Her bright blue walled drawing room has an amusing doll's house effect given to it by the painted windows.

CAMEL'S HAIR SUITS
Camel's hair jumper suits in natural color, the tint of London on a foggy November day, are becoming increasingly popular. Although this color is neither becoming to the wearer nor cheering to its beholder, the material is soft.

CHILD DAUGHTER, who has such painted curtains at her new house in Chelsea, England. Her bright blue walled drawing room has an amusing doll's house effect given to it by the painted windows.

CAMEL'S HAIR SUITS
Camel's hair jumper suits in natural color, the tint of London on a foggy November day, are becoming increasingly popular. Although this color is neither becoming to the wearer nor cheering to its beholder, the material is soft.

CHILD DAUGHTER, who has such painted curtains at her new house in Chelsea, England. Her bright blue walled drawing room has an amusing doll's house effect given to it by the painted windows.

CAMEL'S HAIR SUITS
Camel's hair jumper suits in natural color, the tint of London on a foggy November day, are becoming increasingly popular. Although this color is neither becoming to the wearer nor cheering to its beholder, the material is soft.

CHILD DAUGHTER, who has such painted curtains at her new house in Chelsea, England. Her bright blue walled drawing room has an amusing doll's house effect given to it by the painted windows.

CAMEL'S HAIR SUITS
Camel's hair jumper suits in natural color, the tint of London on a foggy November day, are becoming increasingly popular. Although this color is neither becoming to the wearer nor cheering to its beholder, the material is soft.

CHILD DAUGHTER, who has such painted curtains at her new house in Chelsea, England. Her bright blue walled drawing room has an amusing doll's house effect given to it by the painted windows.

CAMEL'S HAIR SUITS
Camel's hair jumper suits in natural color, the tint of London on a foggy November day, are becoming increasingly popular. Although this color is neither becoming to the wearer nor cheering to its beholder, the material is soft.

CHILD DAUGHTER, who has such painted curtains at her new house in Chelsea, England. Her bright blue walled drawing room has an amusing doll's house effect given to it by the painted windows.

CAMEL'S HAIR SUITS
Camel's hair jumper suits in natural color, the tint of London on a foggy November day, are becoming increasingly popular. Although this color is neither becoming to the wearer nor cheering to its beholder, the material is soft.

CHILD DAUGHTER, who has such painted curtains at her new house in Chelsea, England. Her bright blue walled drawing room has an amusing doll's house effect given to it by the painted windows.

CAMEL'S HAIR SUITS
Camel's hair jumper suits in natural color, the tint of London on a foggy November day, are becoming increasingly popular. Although this color is neither becoming to the wearer nor cheering to its beholder, the material is soft.

CHILD DAUGHTER, who has such painted curtains at her new house in Chelsea, England. Her bright blue walled drawing room has an amusing doll's house effect given to it by the painted windows.

CAMEL'S HAIR SUITS
Camel's hair jumper suits in natural color, the tint of London on a foggy November day, are becoming increasingly popular. Although this color is neither becoming to the wearer nor cheering to its beholder, the material is soft.

CHILD DAUGHTER, who has such painted curtains at her new house in Chelsea, England. Her bright blue walled drawing room has an amusing doll's house effect given to it by the painted windows.

CAMEL'S HAIR SUITS
Camel's hair jumper suits in natural color, the tint of London on a foggy November day, are becoming increasingly popular. Although this color is neither becoming to the wearer nor cheering to its beholder, the material is soft.

CHILD DAUGHTER, who has such painted curtains at her new house in Chelsea, England. Her bright blue walled drawing room has an amusing doll's house effect given to it by the painted windows.

CAMEL'S HAIR SUITS
Camel's hair jumper suits in natural color, the tint of London on a foggy November day, are becoming increasingly popular. Although this color is neither becoming to the wearer nor cheering to its beholder, the material is soft.

CHILD DAUGHTER, who has such painted curtains at her new house in Chelsea, England. Her bright blue walled drawing room has an amusing doll's house effect given to it by the painted windows.

CAMEL'S HAIR SUITS
Camel's hair jumper suits in natural color, the tint of London on a foggy November day, are becoming increasingly popular. Although this color is neither becoming to the wearer nor cheering to its beholder, the material is soft.

CHILD DAUGHTER, who has such painted curtains at her new house in Chelsea, England. Her bright blue walled drawing room has an amusing doll's house effect given to it by the painted windows.

CAMEL'S HAIR SUITS
Camel's hair jumper suits in natural color, the tint of London on a foggy November day, are becoming increasingly popular. Although this color is neither becoming to the wearer nor cheering to its beholder, the material is soft.

CHILD DAUGHTER, who has such painted curtains at her new house in Chelsea, England. Her bright blue walled drawing room has an amusing doll's house effect given to it by the painted windows.

CAMEL'S HAIR SUITS
Camel's hair jumper suits in natural color, the tint of London on a foggy November day, are becoming increasingly popular. Although this color is neither becoming to the wearer nor cheering to its beholder, the material is soft.

Englishwoman Paints Curtain On Window Pane

Another fashionable fad is to take down the ordinary window curtains and have imitation curtains painted on the windows. The fad was started by Mrs. William-Ellis, St. Lee Strachey's nov-

el daughter, who has such painted curtains at her new house in Chelsea, England. Her bright blue walled drawing room has an amusing doll's house effect given to it by the painted windows.

CAMEL'S HAIR SUITS
Camel's hair jumper suits in natural color, the tint of London on a foggy November day, are becoming increasingly popular. Although this color is neither becoming to the wearer nor cheering to its beholder, the material is soft.

CHILD DAUGHTER, who has such painted curtains at her new house in Chelsea, England. Her bright blue walled drawing room has an amusing doll's house effect given to it by the painted windows.

CAMEL'S HAIR SUITS
Camel's hair jumper suits in natural color, the tint of London on a foggy November day, are becoming increasingly popular. Although this color is neither becoming to the wearer nor cheering to its beholder, the material is soft.

CHILD DAUGHTER, who has such painted curtains at her new house in Chelsea, England. Her bright blue walled drawing room has an amusing doll's house effect given to it by the painted windows.

CAMEL'S HAIR SUITS
Camel's hair jumper suits in natural color, the tint of London on a foggy November day, are becoming increasingly popular. Although this color is neither becoming to the wearer nor cheering to its beholder, the material is soft.

CHILD DAUGHTER, who has such painted curtains at her new house in Chelsea, England. Her bright blue walled drawing room has an amusing doll's house effect given to it by the painted windows.

CAMEL'S HAIR SUITS
Camel's hair jumper suits in natural color, the tint of London on a foggy November day, are becoming increasingly popular. Although this color is neither becoming to the wearer nor cheering to its beholder, the material is soft.

CHILD DAUGHTER, who has such painted curtains at her new house in Chelsea, England. Her bright blue walled drawing room has an amusing doll's house effect given to it by the painted windows.

CAMEL'S HAIR SUITS
Camel's hair jumper suits in natural color, the tint of London on a foggy November day, are becoming increasingly popular. Although this color is neither becoming to the wearer nor cheering to its beholder, the material is soft.

CHILD DAUGHTER, who has such painted curtains at her new house in Chelsea, England. Her bright blue walled drawing room has an amusing doll's house effect given to it by the painted windows.

CAMEL'S HAIR SUITS
Camel's hair jumper suits in natural color, the tint of London on a foggy November day, are becoming increasingly popular. Although this color is neither becoming to the wearer nor cheering to its beholder, the material is soft.

CHILD DAUGHTER, who has such painted curtains at her new house in Chelsea, England. Her bright blue walled drawing room has an amusing doll's house effect given to it by the painted windows.

CAMEL'S HAIR SUITS
Camel's hair jumper suits in natural color, the tint of London on a foggy November day, are becoming increasingly popular. Although this color is neither becoming to the wearer nor cheering to its beholder, the material is soft.

CHILD DAUGHTER, who has such painted curtains at her new house in Chelsea, England. Her bright blue walled drawing room has an amusing doll's house effect given to it by the painted windows.

CAMEL'S HAIR SUITS
Camel's hair jumper suits in natural color, the tint of London on a foggy November day, are becoming increasingly popular. Although this color is neither becoming to the wearer nor cheering to its beholder, the material is soft.

CHILD DAUGHTER, who has such painted curtains at her new house in Chelsea, England. Her bright blue walled drawing room has an amusing doll's house effect given to it by the painted windows.

CAMEL'S HAIR SUITS
Camel's hair jumper suits in natural color, the tint of London on a foggy November day, are becoming increasingly popular. Although this color is neither becoming to the wearer nor cheering to its beholder, the material is soft.

CHILD DAUGHTER, who has such painted curtains at her new house in Chelsea, England. Her bright blue walled drawing room has an amusing doll's house effect given to it by the painted windows.

CAMEL'S HAIR SUITS
Camel's hair jumper suits in natural color, the tint of London on a foggy November day, are becoming increasingly popular. Although this color is neither becoming to the wearer nor cheering to its beholder, the material is soft.

CHILD DAUGHTER, who has such painted curtains at her new house in Chelsea, England. Her bright blue walled drawing room has an amusing doll's house effect given to it by the painted windows.

CAMEL'S HAIR SUITS
Camel's hair jumper suits in natural color, the tint of London on a foggy November day, are becoming increasingly popular. Although this color is neither becoming to the wearer nor cheering to its beholder, the material is soft.

CHILD DAUGHTER, who has such painted curtains at her new house in Chelsea, England. Her bright blue walled drawing room has an amusing doll's house effect given to it by the painted windows.

CAMEL'S HAIR SUITS
Camel's hair jumper suits in natural color, the tint of London on a foggy November day, are becoming increasingly popular. Although this color is neither becoming to the wearer nor cheering to its beholder, the material is soft.

CHILD DAUGHTER, who has such painted curtains at her new house in Chelsea, England. Her bright blue walled drawing room has an amusing doll's house effect given to it by the painted windows.

CAMEL'S HAIR SUITS
Camel's hair jumper suits in natural color, the tint of London on a foggy November day, are becoming increasingly popular. Although this color is neither becoming to the wearer nor cheering to its beholder, the material is soft.

Our Stock of Orthophonic Victor Records is complete. New records daily

Another fashionable fad is to take down the ordinary window curtains and have imitation curtains painted on the windows. The fad was started by Mrs. William-Ellis, St. Lee Strachey's nov-

el daughter, who has such painted curtains at her new house in Chelsea, England. Her bright blue walled drawing room has an amusing doll's house effect given to it by the painted windows.

CAMEL'S HAIR SUITS
Camel's hair jumper suits in natural color, the tint of London on a foggy November day, are becoming increasingly popular. Although this color is neither becoming to the wearer nor cheering to its beholder, the material is soft.

CHILD DAUGHTER, who has such painted curtains at her new house in Chelsea, England. Her bright blue walled drawing room has an amusing doll's house effect given to it by the painted windows.

CAMEL'S HAIR SUITS
Camel's hair jumper suits in natural color, the tint of London on a foggy November day, are becoming increasingly popular. Although this color is neither becoming to the wearer nor cheering to its beholder, the material is soft.

CHILD DAUGHTER, who has such painted curtains at her new house in Chelsea, England. Her bright blue walled drawing room has an amusing doll's house effect given to it by the painted windows.

CAMEL'S HAIR SUITS
Camel's hair jumper suits in natural color, the tint of London on a foggy November day, are becoming increasingly popular. Although this color is neither becoming to the wearer nor cheering to its beholder, the material is soft.

CHILD DAUGHTER, who has such painted curtains at her new house in Chelsea, England. Her bright blue walled drawing room has an amusing doll's house effect given to it by the painted windows.

CAMEL'S HAIR SUITS
Camel's hair jumper suits in natural color, the tint of London on a foggy November day, are becoming increasingly popular. Although this color is neither becoming to the wearer nor cheering to its beholder, the material is soft.

CHILD DAUGHTER, who has such painted curtains at her new house in Chelsea, England. Her bright blue walled drawing room has an amusing doll's house effect given to it by the painted windows.

CAMEL'S HAIR SUITS
Camel's hair jumper suits in natural color, the tint of London on a foggy November day, are becoming increasingly popular. Although this color is neither becoming to the wearer nor cheering to its beholder, the material is soft.

CHILD DAUGHTER, who has such painted curtains at her new house in Chelsea, England. Her bright blue walled drawing room has an amusing doll's house effect given to it by the painted windows.

CAMEL'S HAIR SUITS
Camel's hair jumper suits in natural color, the tint of London on a foggy November day, are becoming increasingly popular. Although this color is neither becoming to the wearer nor cheering to its beholder, the material is soft.

CHILD DAUGHTER, who has such painted curtains at her new house in Chelsea, England. Her bright blue walled drawing room has an amusing doll's house effect given to it by the painted windows.

CAMEL'S HAIR SUITS
Camel's hair jumper suits in natural color, the tint of London on a foggy November day, are becoming increasingly popular. Although this color is neither becoming to the wearer nor cheering to its beholder, the material is soft.

CHILD DAUGHTER, who has such painted curtains at her new house in Chelsea, England. Her bright blue walled drawing room has an amusing doll's house effect given to it by the painted windows.

CAMEL'S HAIR SUITS
Camel's hair jumper suits in natural color, the tint of London on a foggy November day, are becoming increasingly popular. Although this color is neither becoming to the wearer nor cheering to its beholder, the material is soft.

CHILD DAUGHTER, who has such painted curtains at her new house in Chelsea, England. Her bright blue walled drawing room has an amusing doll's house effect given to it by the painted windows.

CAMEL'S HAIR SUITS
Camel's hair jumper suits in natural color, the tint of London on a foggy November day, are becoming increasingly popular. Although this color is neither becoming to the wearer nor cheering to its beholder, the material is soft.

CHILD DAUGHTER, who has such painted curtains at her new house in Chelsea, England. Her bright blue walled drawing room has an amusing doll's house effect given to it by the painted windows.

CAMEL'S HAIR SUITS
Camel's hair jumper suits in natural color, the tint of London on a foggy November day, are becoming increasingly popular. Although this color is neither becoming to the wearer nor cheering to its beholder, the material is soft.

CHILD DAUGHTER, who has such painted curtains at her new house in Chelsea, England. Her bright blue walled drawing room has an amusing doll's house effect given to it by the painted windows.

CAMEL'S HAIR SUITS
Camel's hair jumper suits in natural color, the tint of London on a foggy November day, are becoming increasingly popular. Although this color is neither becoming to the wearer nor cheering to its beholder, the material is soft.

CHILD DAUGHTER, who has such painted curtains at her new house in Chelsea, England. Her bright blue walled drawing room has an amusing doll's house effect given to it by the painted windows.

CAMEL'S HAIR SUITS
Camel's hair jumper suits in natural color, the tint of London on a foggy November day, are becoming increasingly popular. Although this color is neither becoming to the wearer nor cheering to its beholder, the material is soft.

CHILD DAUGHTER, who has such painted curtains at her new house in Chelsea, England. Her bright blue walled drawing room has an amusing doll's house effect given to it by the painted windows.

CAMEL'S HAIR SUITS
Camel's hair jumper suits in natural color, the tint of London