

Fabrics for Winter



The demand of the practical woman for the smartest dress materials is happily satisfied in our display of fabrics for winter frocks. Fine weaving—which makes the values all the more noticeable when you see and handle the goods—is dominate throughout the department, at moderate prices.

Woolens shown for street and sports wear sponsor unusual weaves, generally in small patterns and many are self-toned. There are the choicest new flannels, plain and patterned, that are especially favored for fall sewing.

Novelty Weaves Are Most Prominent

Velvet, brocade, and crepe satin are important this season for frocks designed to meet all the requirements of stylish dressing. They are exceedingly smart and the colors—mostly dark in keeping with the season—lend charm with the richness and quality they show.

For general purposes the famous A. B. C. silks are meeting with wide approval in the entire La Grande territory. They are sold exclusively at this store—and with wide range of new shades, plain and changeable weaves, the price of 85c a yard is remarkable.

Notions—latest trimmings—smart accessories will attract you equally while shopping here. Dependable quality and values protect you in every purchase.

Dependable Values

HILL'S

Dependable Quality

SPORT NEWS

Trojans Defeat Aggies 17 to 7

Two Coast Conference Games Will Be Played Tomorrow

SAN FRANCISCO, Nov. 12 (AP)—In the wake of yesterday's stunning outcome when University of Southern California topped the previously undefeated Oregon Aggies under a 17-7 score, four other Pacific coast conference teams published today for resumption of mid-fall hostilities over the week end.

Interest in the conference clashes shifted overnight from north to south where Stanford, only remaining eleven with a perfect record prepared to entertain the purple tornado of Washington in one of the crucial games of the season. A victory over the northern squad will pave the way for a Cardinal championship as Stanford has but then to meet the weaker California team. Coach Warner's men are favored to take the measure of Washington by odds of 2 1/2 to 1.

Oregon Plays Cougars
Oregon invaded Pullman determined to advance in the percentage column by a triumph over Washington State college, but the Cougars, now tied with U. S. C. Washington and O. A. C. for second place, were conceded an edge over their opponents of tomorrow.

Nevada followers turned toward Berkeley confident that the Wolf Pack would run over California Golden Bears already staggering under five successive defeats. The Bears, however, with a new back-field combination of considerable strength, were expected to break the long string of losses.

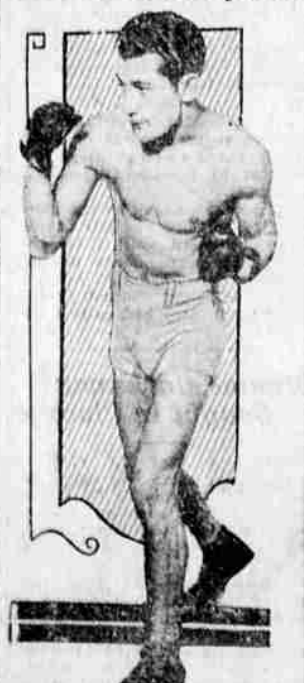
Whittman laid siege at the Missoula stronghold of Montana's grizzlies. Like the California contest it is not of conference bearing.

PORTLAND, Ore., Nov. 12 (AP)—Classical football here featuring a "with one minute to play" had a counter part in the finish of the game here yesterday between Oregon Agricultural college and the University of Southern California in which the Aggies

late. The Trojans had won the game with two touchdowns and a place kick. Score 17 to 7.
Brew Taylor, top artist of the Southern Californians made a place kick in the first period after two unsuccessful attempts. In the second period a pass from Kner, the Trojans' quarter, to Laranette just behind the Aggies' goal scored the first period after a terrific plunging attack and Taylor again made the extra point.
Dixon blocked a Trojan punt on the 20-yard line and Olmstead, a sub tackle for the Aggies, picked up the ball and dived over the line for the Aggies touchdown. Maple kicked for the extra point.
Made a touchdown in the last 30 seconds. But the rally came too

late. The Trojans had won the game with two touchdowns and a place kick. Score 17 to 7.
Brew Taylor, top artist of the Southern Californians made a place kick in the first period after two unsuccessful attempts. In the second period a pass from Kner, the Trojans' quarter, to Laranette just behind the Aggies' goal scored the first period after a terrific plunging attack and Taylor again made the extra point.
Dixon blocked a Trojan punt on the 20-yard line and Olmstead, a sub tackle for the Aggies, picked up the ball and dived over the line for the Aggies touchdown. Maple kicked for the extra point.
Made a touchdown in the last 30 seconds. But the rally came too

Army Champion



Presenting Al Pincuson feather weight champion of the army navy and marine corps, who will be Uchek Sam's official representative in the coming tournament for the world featherweight title.

Ontario Eleven Loses to Baker In Close Game

BAKER, Ore., Nov. 12—George Duff, Baker halfback, plunged through the line for the only touchdown in the Armistice Day football game yesterday and won the contest by a 6 to 0 score after the ball had been pushed to the 6-inch line by a 25-yard pass from Hines to McCard and two runs by Adrain and Duff.
Ontario was hopelessly weak on the offense, but able to hold the Baker team when the "Hulldogs" came in striking distance of the goal. Baker had three chances within a few feet of the goal line, but was unable to pierce the strong Ontario defense.

Frosh and Rooks To Play Saturday

EUGENE, Ore., Nov. 12 (AP)—The University of Oregon freshman football team is ready today for the clash tomorrow with the O. A. C. rooks from Corvallis. The game will be played on the local field. The game is scheduled for 1 o'clock.
The Oregon frosh will present a strong lineup, but the lack of competent reserves is noticeable.

Kid Starkey Wins From Joe Coffman

KLAMATH FALLS, Ore., Nov. 12 (AP)—Tearing in and scoring a knockdown in the first round, Kid Starkey outpointed Joe Coffman all the way in their ten-round main event bout here yesterday afternoon, the fight ending in the sixth when Coffman was unable to rise after a barrage of blows to the heart and kidneys. They are 140-pounders.

\$30 Bill Issued In 1778 Valuable

NEW BRITAIN, Conn., Nov. 12 (AP)—A bona fide \$30 bill is held by Bernard L. Hoppe of this city. Local bank officials pronounce it authentic, and Hoppe has refused many times its face value.
The note, dated September 26, 1778 and signed by "A. Lawrence, Secretary of the United States Treasury," is numbered 217,206. It is about one-fourth the size of a modern dollar bill. Bankers say it is still legal tender.

FOOTBALL

Outstanding football games in various sections of the United States Nov. 12, include:

- East
- Army vs. Notre Dame at New York.
- Princeton vs. Yale at Princeton.
- Pennsylvania vs. Columbia at Philadelphia.
- Syracuse vs. Colgate at Syracuse.
- Harvard vs. Brown at Cambridge.
- Navy vs. Georgetown at Annapolis.
- Cornell vs. Dartmouth at Ithaca.
- Williams vs. Amherst at Amherst.
- Penn. State vs. Bucknell at State College, Pa.
- Boston College vs. Haskell Indians at Boston.
- Maryland vs. Virginia at College Park, Md.
- Lafayette vs. Susquehanna at Easton, Pa.
- Lehigh vs. Rutgers at Bethlehem, Pa.
- Holy Cross vs. Catholic at Worcester, Mass.
- Washington and Jefferson vs. Pittsburgh at Pittsburgh.
- Wesleyan vs. Bowdoin at Middletown, Conn.
- New York University vs. Davis-Elkins at New York.
- New Hampshire vs. Maine at Durham, N. H.
- West Virginia vs. Centre at Parkersburg, W. Va.
- West
- Michigan vs. Ohio State at Columbus, Ohio.
- Wisconsin vs. Iowa at Madison, Wis.
- Chicago vs. Northwestern at Evanston, Ill.
- Illinois vs. Wabash at Urbana, Ill.
- Purdue vs. Franklin at Lafayette Ind.
- Minnesota vs. Butler at Minneapolis.
- Indiana vs. Mississippi A. & M. at Bloomington, Ind.
- Missouri vs. Washington at Columbia, Mo.
- Iowa State vs. Drake at Ames, Ia.
- Kansas Aggies vs. Nebraska at Lincoln, Neb.
- Grinnell vs. Oklahoma A. & M. at Normal, Okla.
- Oklahoma vs. Kansas at Lawrence, Kan.
- St. Louis vs. Arkansas Poly. at St. Louis.
- South
- Alabama vs. Florida at Montgomery, Ala.
- Alabama Poly. vs. Marquette at Birmingham, Ala.
- Georgia Tech. vs. Georgia at Atlanta, Ga.
- V. M. I. vs. Kentucky at Charleston, W. Va.
- Louisiana State vs. Mississippi Univ. at Baton Rouge, La.
- Pitts. vs. Sewanee at New Orleans.
- Vanderbilt vs. Tennessee at Nashville, Tenn.
- Washington and Lee vs. Virginia Poly. at Blacksburg, Va.
- North Carolina Univ. vs. Davidson at Davidson, N. C.
- South Carolina vs. Furman at Columbia, S. C.
- Clemson vs. The Citadel at Clemson College, S. C.
- Far West
- Stanford vs. Washington at Stanford, Cal.
- Washington State College vs. Oregon at Pullman, Wash.
- Montana vs. Whittman at Missoula, Mont.

College Hero



Presenting the campus hero of Michigan State College, Paul Smith, He is the first State player to score on University of Michigan in eight years. He kicked a field goal.

ENTERPRISE PERSONALS

ENTERPRISE (Special)—Among the people registered at the Hotel Enterprise the first of the week were O. L. Babcock, Indian agent from Pendleton; Edwin Holmes, insurance man of La Grande; Mrs. I. Floyd, welfare worker in woman's clubs from Dumalis, Fla.; A. V. Wells of Portland; Roland Oliver, of Portland; W. C. Tucker of Spokane; George Ferguson, of Pendleton and P. E. Gerald, of Portland.

Headlines you never saw: MY OPPOSITE BETTER MAN, SAYS DEFEATED CANDIDATE.

CHEST COLDS

Apply over throat and chest—cover with hot flannel cloth.
VICKS VAPORUB
Over 17 Million Jars Used Yearly.



We are getting pure white lead for \$12.95 per hundred. We are selling hundreds of gallons of boiled linseed oil. I went up to Enterprise yesterday just to take a day off and one of the farmers up there bought 50 gallons of red lead paint from us. He got it cheaper than he could have gotten it at the mill order houses and at the same time got better paint. My little branch yard up there is doing real well. They turn about everything we send them back into money, and the money starts out after another supply. We are getting nearly all the painters in the country to buy at least part of their supply and some of them buy all their supply here.
We have a fine line of rubber set brushes all the way from 53c up. Our saw filer has 14 saws ahead to file. Our router is going to be as busy as a bumble bee. Jobs are beginning to pile up on him. We have a carload of coal coming in and a carload of shingles and we are just shipping out three cars of lumber. We still have sandpaper and yellow pine wood.

Claude C. Pratt Lumber Co.
"The Poor Man's Friend"
Near Foundry. Phone Main 248
No Sunday Business.

Do Your Christmas Shopping Now

A small deposit will assure you of what you want and when you want it.

La Grande Electric Co.
1412 Adams Ave.
"Everything Electrical"

PIGGY WIGGLY

It's Foolish to Pay More and Risky to Pay Less

SPECIAL Canned Foods Week

NOV. 10 TO NOV. 20

Special prices by the dozen and by the case are being made between these dates by Piggly Wiggly. Pink colored hanging price tags show some of these prices. Study our price tags and talk with the men at the checking counter before you buy the canned goods you intend to purchase this season.

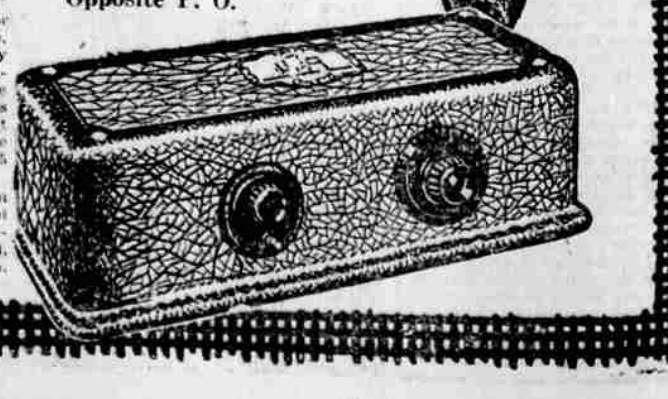
LOOK OVER OUR WANT ADS FOR BARGAINS

ATWATER KENT RADIO



Isn't it time—NOW?
—when Atwater Kent Radio is so firmly established in people's minds that three out of every four ask for it by name
—when the satisfaction of owners is so deep they can't help telling their friends about Atwater Kent Radio
—when the greatest artists broadcasting today say frankly that in their own homes they prefer the tone of Atwater Kent Radio
—when tone, reliability, simplicity and all that makes good Radio are to be found in Atwater Kent Radio
—isn't it time to see an Atwater Kent Dealer and ask him to put an Atwater Kent Receiving Set and Radio Speaker in your home?
Jesse Rosenbaum Electric Shop
Opposite P. O.

- Receiving Sets, for six or seven tubes, one dial, mahogany or crystalline finished cabinet. Price ranges from \$25 and batteries and with battery cable attached) from \$65 to \$145.
- Radio speakers from \$15 to \$24. Model 38, six-tube receiver, illustrated, with ONE dial, \$25.



- Every Sunday Evening the Atwater Kent Radio Hour is scheduled at 8:15 Central time and 6:15 Pacific time throughout.
- WEAF . . . New York
- WJAR . . . Providence
- WEEL . . . Boston
- WRC . . . Washington
- WSAI . . . Cincinnati
- WTAM . . . Cleveland
- WTAG . . . Worcester
- WGN . . . Chicago
- WFL . . . Philadelphia
- WCAE . . . Pittsburgh
- WGR . . . Buffalo
- WOC . . . Davenport
- WSD . . . St. Louis
- WWJ . . . Detroit
- WCCO . . . Mpls.-St. Paul