

Building and Improvement

TWO NEW HOMES TO BE ERECTED

Dwelling to Be Built on First Street at Cost of \$3,900

Permits were issued during last week for the construction of two new homes in La Grande. The three permits totaled \$4,475.

On Oct. 12 W. C. Kelly applied for permission to erect a modern dwelling on First between Main and Washington. The estimated cost of the home is \$3,900 and the building will be owned by A. L. Trowley.

On Oct. 11 Carl Kofford took out a permit for Claud C. Pratt to construct a \$500 home on X between Depot and Fir.

On Oct. 13 a permit was issued to C. E. Bragg to build a garage on Birch between Y and the north

city limits. The garage, to be owned by J. W. Latty, will cost \$75.

Grange Hall Home Ready to Occupy

GRANGE HALL, Oct. 18 (Special).—With the exception of some inside painting and staining William Sherwood's new home here is finished and ready for occupancy.

This summer Mr. Sherwood had his old house torn down and in its place had a new five-room bungalow erected. The house is strictly modern, with a full basement. The furnace has been delivered and will be installed immediately.

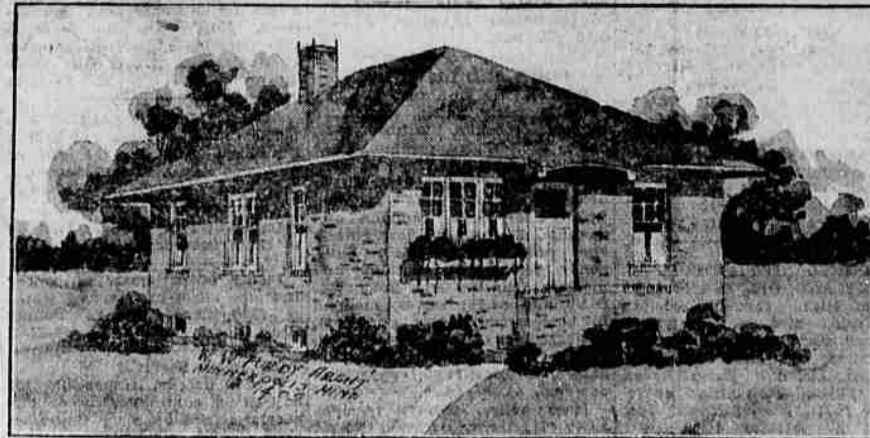
Cameron and Bragg, of La Grande, had the contract for building the house.

Here And There

COTTAGE GROVE — Old Imperial hotel to be razed to make way for new business block.
COTTAGE GROVE — This city now has \$82,000 worth of buildings under construction.

ARLINGTON — More building

A BRICK VENEER BUNGALOW



By W. W. PURDY

There is something substantial about a brick bungalow, be it ever so small. Many people do not consider brick as they think the cost prohibitive. This is not true, and when one considers that the brick veneer home is the warmest type of construction this extra expense is soon saved in cold.

The little brick veneer bungalow here illustrated is laid out on a very popular type plan. Facing east, the living quarters are placed on the south, with two bedrooms and bath on the north. The rooms are not large, but every inch of space has been utilized with good wall space, cross ventilation and good closets.

A stairway leads to a full basement, with a center chimney. This home can easily be heated by a warm air furnace.

Using hardwood floors throughout, and fir trim, balance in pine enameled, this home should be built, exclusive of heating and plumbing, for from \$3,000 to \$3,500.

In progress this year than for many years.

GRESHAM — Graham Produce company will build large chicken-canning and feeding plant.

EUGENE — Building permits for September \$25,500.

NEWPORT — Newport Machine shop to build larger quarters.

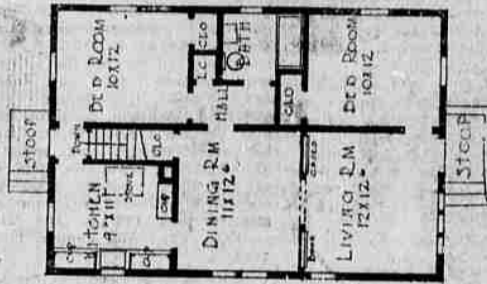
MEDFORD — "Daily News" building new quarters.

WESTON — New schoolhouse will cost \$30,000, furnished.

MEDFORD — Woodmen of the World dedicate new \$72,000 hall.

SALEM — Building for September \$260,750.

KLAMATH FALLS — California Petroleum company builds \$20,000



distributing station.

MEDFORD — Presbyterians will build \$50,000 church.

CANBY — Nine school districts will build union high school at cost of \$83,000.

ALBANY — This city guarantees \$400,000 for Oregon Milk company to move Seta and Anity plants here.

KLAMATH FALLS — Turntable and roundhouse, in connection with \$800,000 Southern Pacific terminal here, nearing completion.

The Garden

WINTER WORK FOR THE COLD FRAMES

Cold frames should work the year around. In the winter they should carry over plants and bulbs that are not quite hardy enough for the open ground, to furnish early flowers while the air is still frosty in spring and to furnish parsley for the house and an occasional bunch of pansies. They will also bring California's famous butterfly tulips to our doors with a cold frame.

These gorgeous bulbs, the mariposas of Spanish settlers, are known as calochortis to the botanist. They are now being offered by eastern dealers. They will often survive the winter in the open with a good mulch of leaves but come through beautifully in a cold frame. They need protection more from wet than from cold. They have lavender, yellow, and white blooms with gorgeous eyes and spots. A dozen of them in a cold frame will be a delightful surprise next May when the handsome butterflies unfold, some of them nearly three inches across on tall very stems.

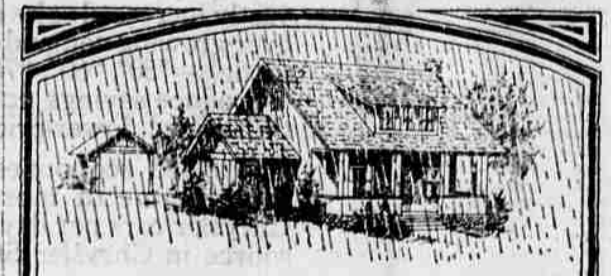
Pansies may be transplanted into the cold frame, to bloom in spring and for early pansies in the garden sow a row of seed now in the cold frame and have fine

sturdy plants to transplant in the spring. The same method may be followed admirably with snapdrag-



Well, this Monday is starting off in fine shape. At present there are 2 ladies, three gentlemen and others on the road. Several of the gentlemen are quite good looking. We sell sand paper by the yard and coal by the ton and paint by the gallon. Saturday we sold 30 rolls of roofing and deadening felt. We sell encaustic doors and wall board—the kind has the plaster between. We have three car loads of stingles coming and a lady is picking up the wall paper this very minute. People like the Rock Spring coal from the way the orders are coming in. I asked one of my customers if he could think of anything else I could say and he drew his head down into his coat collar and said, "I don't believe I could."

Claude C. Pratt
Lumber Co.
"The Poor Man's Friend"
Near Foundry, Phone Main 248
No Sunday Business.



When the weather forecast says rain
J & D PAINT
reigns as your home weather insurance

When your home is well painted, a heavy driving rain CANNOT force moisture under the siding. It's moisture that starts decay—decay starts repairs—and repairs start expense!

Paint! and get this weather insurance. J & D Paint closes the wood pores and seals the siding against the elements—a high quality paint that guarantees a durable, beautiful surface.

Ask for J & D Color Scheme Booklet.

NOAH'S PAINT STORE For Every Surface



ons which delight in a cool atmosphere when they are first developing and will be fine sturdy plants under the protection of a sash when transplanting time comes next spring. The roots may be wintered easily if moved from the garden to the frame as the snapdragon is a perennial under proper conditions.

The tender polyanthus narcissi are an excellent experiment for the cold frame and if planted five inches deep will come up in early spring and bloom under the glass before the narcissi in the garden have shown color. The early strains of gladiolus sometimes advertised as hardy, such as Collette, the Bride, Peach Blossom and others, also do admirably with cold frame treatment. While

sometimes called hardy they will not survive in the open ground except in unusually mild winters.

Grain Elevator Too Heavy; Falls

NORTH POWDER, Ore., Oct. 18. (Special).—The Bidwell-Evans grain elevator here collapsed last week as the result of too much weight for the foundation of the building. The last load of wheat has been loaded out of the warehouse.

Father made to haul the load. The'll not have to ask the question: "Here's the band, but where's the road."—Anon.

Muskrat Farm to Operate at Union

UNION, Oct. 18. (Special).—A new industry for Union is the starting of a muskrat farm by Earl Baird, who has purchased 25 acres of land from Mrs. Nancy Hutchinson. He has already fenced the pond and is doing other work preparatory to stocking it with rats.

Don't take a back seat for anybody except when you're in a race, then take it with somebody.

Tourist: I'm almost certain I must have run across you (face sometime or other)



PIPE AND FURNACES PIPELESS

are "engineered" into your home.

By "engineered" we mean that Montag Furnaces are scientifically installed by Montag installers according to the individual requirements of your home.

Everything that affects home-heating is considered; how many rooms, size and location, basement provisions; Then an installation is made to "FIT" by the authorized Montag installer in your locality.

The furnace is properly placed, pipes scientifically proportioned, grouped and sloped to allow maximum distribution of warm air. Sheet metal work is neatly and permanently done.

As a result of Montag "engineering" your Montag furnace gives you comfortable, healthful "ventilated heat" with unusual economy.

"Montag ventilated heat" — a large volume of slowly moving air pre-warmed to the proper temperature



The illustration pictures a Montag full pipe installation. Note the extra large cold air returns, improved radiator dome, and air insulated casing—just one style of Montag "engineered-into-the-home" installations.

Investigate NOW!
Write, phone or call on the authorized Montag installer in your locality.
FRED SPAETH
Ph. 28.
Phone Main 384

MONTAG STOVE WORKS

Largest Manufacturers of Stoves, Ranges and Furnaces on the Pacific Coast
Portland, Oregon

THE NEW WAY OF HEATING

Allen's Parlor Furnace



An Above-The-Floor Furnace

A small furnace placed above the floor will heat your home comfortably this Winter on less fuel. It will do the work of several stoves and heats connecting rooms the furnace way of moist circulating air.

Come in and see this wonderful new heating system which is the latest development in the stove industry. The vitreous porcelain enamel finish is as easily kept clean as a piece of furniture.

Don't buy a heating system until we have shown you how a furnace placed above the floor utilizes all the heat, cuts down the fuel bill and does the work of several stoves.

Can be installed in a few minutes.
Does not require a basement.

E. J. DONOHUE
FURNITURE EXCHANGE

Blue Mountain Oregon Lumber

From Woods to Customers, you can depend on our products being properly manufactured. Our trade mark on each board shows our confidence.

LUMBER, SASH, DOORS AND SHINGLES

Bowman-Hicks Lumber Co.

Phone Main 547

J. L. Munhall for Chain and Box Wood