

**DEPENDABLE**

*Westenhaver & Gilbert*

**The Store For Men**

**CHICAGO LIVESTOCK**

CHICAGO, Sept. 13. (U. S. Department of Agriculture)—Hogs—24,000; very uneven; most of early upturn on light hogs ceased; packing hogs 15 to 25c higher; top light hogs early \$14.65; bulk desirable 220 pounds down, \$12.90 to \$14.40.

Cattle—35,000; better grades of fed steers fully steady; several strings of yearlings, \$11.50; best heaves up to \$11.25; in between grades of fed steers unevenly steady to 25c lower; western grassers, comprising about 18,000 head showing decline; lower grade of fat cows and heifers dull; better grades steady; vealers 50c lower; mostly \$12 to \$12.50.

Sheep—26,000; most early sales of fat lots steady; no western sold; top natives \$14.50; city butchers buying at \$14.50; early bulk, \$14.25 with light sort; several lots held at \$14.50; culls steady at \$10.00 to \$11.00; mostly; sheep steady at \$5.50 to \$7; feeding lambs about steady, at \$14.00 to \$14.50.

**PORTLAND PRODUCE**

PORTLAND, Ore., Sept. 13. (AP)—Eggs steady; current receipts, 23c; fresh medium, 23; fresh standard firsts, 26c; fresh standard extras, 28c; understandard, 15c.

Butter steady; extra, 40c; city, 40 1/2c; standard, 37 1/2c; prime firsts, 27 1/2c; firsts, 30c; prints, 17c; cartons, 45c.

Milk steady; best churning cream, 41c per pound net shipper's truck to some L. Cream delivered Portland, 45c per pound; raw milk (4 per cent), \$2.25 cwt; U. S. B. Portland.

**'BEAR' AND 'BULL' CONTROL SHIFTS**

NEW YORK, Sept. 13 (AP)—In a market dominated largely by professional operators, stock prices were churned about in rapid and erratic fashion today, with control frequently shifting from the "bulls" to the "bears" and back again.

Years of further price cuts resulted in a revival of selling in the automotive group. General Motors opened at 142 1/2, advanced to 143 1/2, broke to 140 1/2, and had closed above 142 again by early afternoon. Hudson broke three points, and some of the other top-priced motors touched new lows on the current movement.

Railroad equipment shares gathered strength when bullish demonstrations were resumed in Pullman, which soared 6 1/2 to 156 1/2, the highest price since 1919.

The closing was heavy. Active selling of General Motors, Mack Truck and Hudson unsettled the market in the final hour, counteracting the strength of such issues as Pullman, Coca Cola and American Smear Tobacco, which reached the year's top price. Continental Baking "A" broke nine points.

Total sales approximated 1,400,000 shares.

**MARKET NEWS OF THE DAY**

**CHICAGO GRAIN**  
Wheat—Open High Low Close  
Sept. 13 132 131 131 132 1/2  
Dec. 126 127 124 125 1/2  
May 141 142 140 140 1/2

**LIVERPOOL WHEAT**  
LIVERPOOL, Sept. 13 (AP)—Close wheat 1 1/2 to 1 3/4 higher; Oct. 10s, 2 3/4; Dec. 10s, 6 1/2; March 10s 5 1/2; May 10s 4 1/2.

**CHICAGO CASH**  
CHICAGO, Sept. 13 (AP)—Wheat—No. 2 hard, \$1.34 1/2; No. 2 hard, \$1.30 1/2; No. 2 white, \$1.34 1/2; No. 2 white, \$1.34 1/2; No. 2, \$1.34 1/2; No. 2, \$1.34 1/2; No. 2, \$1.34 1/2; No. 2, \$1.34 1/2.

**PORTLAND WHEAT**  
PORTLAND, Ore., Sept. 13. Blue stem hard, Moderation soft white, western white, hard winter, \$1.25; southern spring, \$1.27; western red, \$1.25.

**NEW YORK FRUIT**  
NEW YORK, Sept. 13 (AP)—Evaporated apples, stiff; choice 11 1/2 to 12c; fancy, 12 1/2 to 13c; peaches, easy; California, 5 1/2 to 12 1/2; Oregon, 3 to 5 1/2.

**BUTTERFAT**  
SAN FRANCISCO, Sept. 13. (AP)—Butterfat T. O. B. Standard, 45c.

**Wheat Drops In Chicago Market General Slump**

CHICAGO, Sept. 13. (By the Associated Press).—Starting 3/4c lower to 1/2c higher, wheat values quickly swung off all around, and oats closed off with wheat, although weather conditions over the belt were not very favorable over Sunday for the rapid maturity of the new corn crop. Starting down to 5/8c up, corn soon underwent a further general setback. Provisions were quiet.

Wheat closed weak to 1/4c to 1/2c lower; corn was unchanged to 3/8c off and provisions unchanged to 2 1/2c decline.

**APPLES GO AT GOOD PRICE IN LONDON MART**

PORTLAND, Ore., Sept. 13. (AP)—After many days of uncertainty on the part of growers, dealers and buyers of the Hood River valley, a good price for apples has been assured. Sale of a large block of apples to the United Kingdom reported to be in the neighborhood of 800,000 boxes, ended the anxiety of the growers as to the export market this year.

Representatives of British importers, members of the department of agriculture, and eastern buyers have tested the packed fruit and found it to come up to all specifications of both the British and United States regulations.

With nearly 75 per cent of the crop available for export taken and more than half of the crop contracted, the growers are now resting easy.

While not quite a record crop, the valley will have a bumper yield this season, due to the mild open winter and favorable growing weather. Quality is reported to be exceptionally fine this year.

**FRISCO FRUIT**  
SAN FRANCISCO, Sept. 13. (AP. Federal State Market News Service).—Apples—Boxes: Fancy grade 2 1/2 to 4 tier California Newtons, \$1.25 to 1.30; Spitznbergers, \$1.50 to 1.75; white winter Pearmaines, \$1.50 to 1.75; Belleflowers, \$1.50 to 1.75; E. L. Greenings, \$1.20 to 1.30; Jonathans, \$1.50 to 1.85; Delicious, \$2.00 to 2.25; Kings, \$1.50 to 1.75; "B" grade, 25 to 50c lower.

Peaches—California, Salways and Piqueet Lates, 75 to \$1.00 box; yellow free stones, 80 to \$1.10 box.

**LA GRANDE WHOLESALE MARKETS**  
Poultry (live weight). Heavy spring chickens—22c lb. Light spring chickens—20c lb. Heavy hens—20c lb. Light hens—12 to 16c lb. Medium hens—16c lb. Light hens—14c lb. Stags—8c lb. No. 1 live turkeys—22c lb.

**Flour.**  
Hard Federation (hard wheat)—\$7.00 bbl. Soft wheat—\$7.40 bbl.

**LA GRANDE RETAIL MARKETS**  
Lard—10 lbs. \$1.20; 5 lbs. \$2.00. Butter, creamery—25c lb. \$1.05 a roll. Eggs—40 to 45c doz. Cheese—35 to 40c a pound. Honey, comb—20c lb.

**Vegetables.**  
New potatoes—3 lbs. 25c. Celery hearts 25c bunch. Cabbage—15c lb. Green string beans—12 1/2c lb. Sweet potatoes—2 lbs. 25c. Carrots—5c bunch. Parsley—10c bunch. New cabbage—5 to 8c lb. Walla Walla onions—2c lb. Green onions—5c bunch. Green peppers—15c lb. Lettuce—17c head. Kennewick tomatoes—10c lb. \$1.25 box.

Field cucumbers—5c each. Green corn—25c doz. Summer squash—1c each. Egg plant—15c. Pickling onions—17c lb. Parsnips—2 bunches 15c.

**Fruits.**  
Kennewick, Wash., Freestone peaches—10c lb.; 8c to \$1.15 box. Green apples—4 lbs. 25c.

**CALL FOR BIDS—LIGHTING DISTRICT NO. 1.**  
Sealed bids will be received by the City Commission of the City of La Grande, Union County, Oregon, for the construction of street lighting district No. 1, within the city of La Grande, Oregon, according to the plans and specifications of the said lighting district now on file in the office of the city recorder of the said city. This improvement is being constructed under the Bennett Act, and consists of 72 lamps. A deposit of \$10.00 is required for set of plans and specifications and this amount will be returned if bidder is unsuccessful and return same to this office.

Bids will be received to the hour of seven-thirty p. m. September 20th, 1926, at the commission room in the city building at La Grande, Oregon, and must be accompanied by a deposit in the sum of ten per cent of the amount bid as a guarantee of acceptance, completion of contract if awarded. Either a certified check on a bidder's bank is acceptable for this deposit and will be returned in unsuccessful bidders.

The commission reserves the right to reject any or all bids. By order of the commission Sept. 13, 1926.

J. E. STEARNS  
Recorder of the City of La Grande, Oregon.

**FIND IT HERE**

Copy for this column must be in by 9:00 a. m.

**COMMUNITY SALE**  
SPECIALS  
YOUR CHOICE  
WOOL DRESSES  
AGE 7 TO 16  
\$3.95  
NORTON'S  
KIDDY SHOP

Mrs. Jessie Hopkins will resume her vocal class in La Grande Wednesday, Sept. 15, Studio, Odd Fellows' temple. Phone 447-J. 9-13-26

**NEW FOR FALL**  
A full line of American Brass by useful articles has just arrived. These are moderately priced, but delightful in design. See them in our window display. Richardson's Art and Gift Shop. 9-12-11

Mrs. Harley Smith announces to her customers and the ladies of La Grande that she has reopened her dressmaking and dress remodeling shop at 219 1/2 Second. Efficient assistant. Phone Main 417. 9-11-21

**THE CLUB CIGAR STORE**  
Is now open under the ownership of Vernon Seitz. He invites all former patrons to come in and make themselves at home.

**BEAUTIFUL**  
Hand tinted enlargements made from negatives or prints, at Richardson's Art and Gift Shop. 9-12-11

Ask us about Zinc and Lith Paint. \$2.75 per gallon. Ground in pure oil. The Quality Paint Store—Burg Paint Co. 9-13-11

An Eczema prescription that acts quickly and effectively for children or grown people at \$1.00 a bottle sold only by Silverthorn-Wright's family drug store. 9-10-11

**AT YOUR SERVICE**  
For all kinds of Windshield and Side Glass fitting. Richardson's Art and Gift Shop. 9-12-11

**SUPPLIES AND OXAFORIS**  
AGE 6 TO 15  
\$1.45 TO \$1.98  
NORTON'S  
KIDDY SHOP

Zinc and Lith Paint, while a second grade paint, is not second to ANY zinc and lithapion mixture. Quality Paint Store—Burg Paint Co. 9-13-11

For dandruff and falling out of the hair our Germicide and Dandruff Eradicator acts quickly. Stops both troubles in a few days. Sold for 75c only by Silverthorn-Wright's family drug store. 9-10-11

School Books, new and second hand bought and sold. Sold only by Silverthorn-Wright's family drug store. 9-10-11

Items such as, pleating, button holes, etc. Norton's Kiddy Shop. 10-14-11

If your nerves are troubling you, try our new nerve tonic. It will put pep into you, aid digestion and build you up quickly at \$1.00 a bottle. Sold only by Silverthorn-Wright's family drug store. 9-10-11

School Funds now available for farm loans in Union County. See H. E. Dixon, Foley Building, La Grande, Ore. 9-15-11

On Wednesday, Sept. 15, we will have one of our long distance-published "Treasure" maps in La Grande, which we returning to "Treasure" empty. For anyone moving to Portland we are able to offer the best of service at a real

**J.C. Penney Co.** A NATION-WIDE INSTITUTION—  
DEPARTMENT STORES  
108 Depot St., La Grande, Ore.

**Corsets Give Support**  
Try "Lady-Lyke" For Comfort

You'll never be so comfortably dressed as the times you wear your Lady-Lyke Corset! And you look so stylish when corseted, too! A corset gives the support necessary for comfort.

See Our Unusual Corset Values  
Our own Lady-Lyke Corsets excel! At this price, we offer an excellent garment. Ask to see this Corset! Just think, the price is,

**98c**  
Others \$1.98 to \$4.98



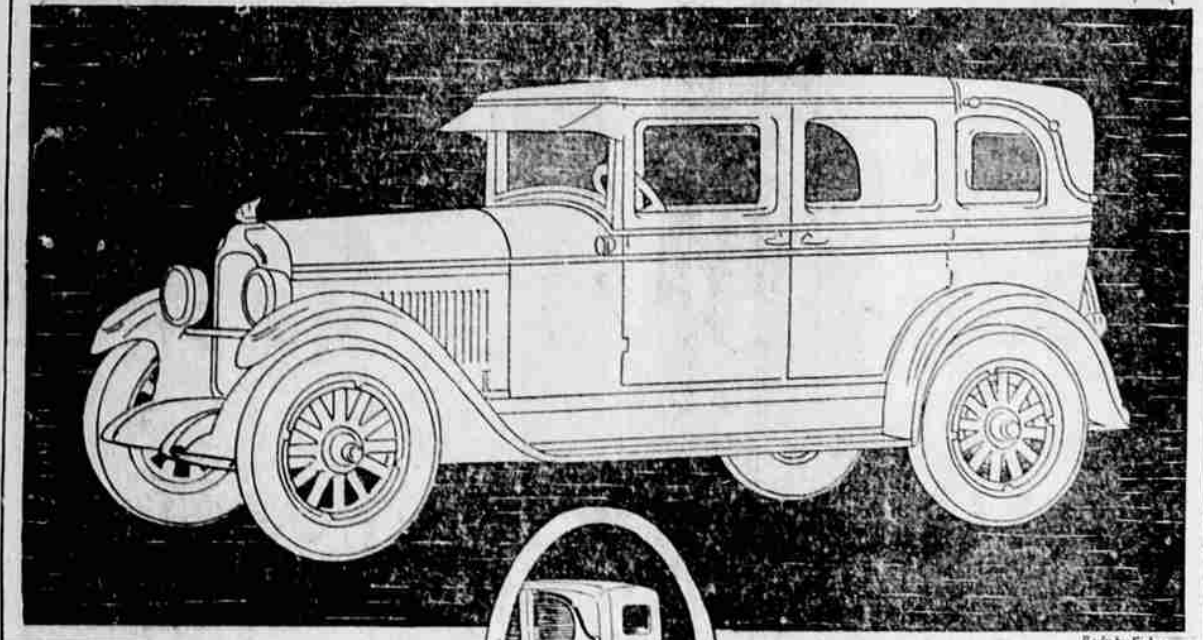
reasonable rate. Kindly wire at our expense. W. M. Olson Transfer & Storage Co., 247 Pine St., Portland. 9-13-21

**NOTICE TO CREDITORS**  
Notice is hereby given that the undersigned has been duly appointed by the County Court of the State of Oregon for Union County, administratrix for the estate of Chris Lund, deceased, and has qualified as such. All persons having claims against said estate are hereby required to present the same, verified as required by law, to the undersigned at La Grande, Oregon, or at the office of her attorneys, Green & Hess, at La Grande, Oregon, within six months from the date hereof.

Date of first publication August 15, 1926.  
EMMA D. LUND,  
Administratrix.  
Green & Hess, attorneys for administratrix.  
Aug. 16, 22, 29, Sept. 6, 13.

Tying about your age is like setting the clock back to keep the hour from being so late.

**10 Years Ago Today...**  
Liquor and beer shipments or August are heavy.  
**Busy**  
Every day business improves as we improve our values and service.  
**HOT LUNCHEONS**  
Carry a Thermos Lunch Kit—makes the meal taste lots better.  
**L. & L. Drug Co.**



OAKLAND presents the

**PONTIAC SIX**

Landau Sedan

**\$895**

A masterly combination of style, stamina and thrift. An ultra-smart Body by Fisher, finished in Sedge Green Duco. The spectacular power, speed and endurance that have established the Pontiac Six as the outstanding triumph of automotive history. And a price that could only be achieved by an organization enjoying the advan-

tages of General Motors' gigantic purchasing power. In short, Oakland's answer to the demand for a low-cost enclosed six, combining the utmost in distinguished appearance and appointments with that quality construction which is now recognized as the outstanding characteristic of the Pontiac Six.

The Pontiac Six Landau Sedan is finished in Sedge Green Duco on body, hood and wheels, contrasting with satin black superstructure and fenders; French gray spring; rear quarters trimmed in dull leather and embellished with Landau trim. . . . Upholstery: Fine leather stool; lines of superior covering qualities. . . . Equipment items include nickel-plated radiators, Indian head radiator caps, VV one piece windshield with automatic cleaners; rear vision mirror, dome light, rear view, roller shades on rear windows, rubber wall, foot rail, high speed window regulators, and invisible door checks.

Pontiac Six Sedan or Coupe, \$825. Oakland Six, Companion to Pontiac Six, \$1025 to \$1295. All prices at factory. Extra to pay on the General Motors Time Payment Plan.

**CHAS. MCCRARY**  
Washington Ave. Garage.

**OAKLAND-PONTIAC**  
PRODUCTS OF GENERAL MOTORS

**Sixes**

**S·H·E·R·R·Y'S**  
TODAY AND TOMORROW

**The Barrier**

Based on the story by  
**REX BEACH**

With  
NORMAN KERRY - LIONEL BARRYMORE  
HENRY B. WALTHALL

Fights, feuds, romances, the frenzied hunt for gold in the frozen wastes of the Yukon!

Comedy — "CREEPS"

**A Final Tribute that Requires Utmost Dignity**

Never do you feel a greater need for expert attention to details and sympathetic execution of duties as when the final tribute is being paid a loved one who has passed.

Only a service of utmost dignity is worthy of the ideal you have in mind when forced to plan the paying of this tribute. Appreciative of this fact, we are always deeply concerned with providing a service that will meet your requirements in every way. Training, experience and most adequate facilities are combined to permit our making it perfect, and the cost is such that it can be adjusted to suit your own wishes and not add to your existing burdens.

**HAL BOHNENKAMP**  
Funeral Director

FIFTH AT SPRING STREET

Main 42

