

AUTOMOBILE NEWS

TRAVEL HOLDS FAIRLY EVEN

ENTERPRISE, Ore., Aug. 21.—Travel on the two highways of fallow county is holding fairly even according to the count made Friday, August 13, under direction of P. J. Berry of the maintenance department. A gain over June and July was shown on the north highway, while the valley road failed to show any pronounced trend in any direction.

The Friday count on the valley highway at the J. A. Eggleston corner and on the north road at Camp gave these figures, Valley North region cars 340 64 outside cars 33 10 buses 5 2 light trucks 53 18 heavy trucks 28 3

Total 459 97
June total 329 67
July total 468 67

The count on Saturday, August 14, 1926, showed 552 cars on the valley highway. Saturday travel is considerably heavier than that of other week days and on Saturday in question Macy and Ford were here with their tent show, which would account for some added cars on the road. It is apparent that traffic varies considerably from one day to another and comparisons are of doubtful value.

Last Friday's count showed the travel distributed through the day thus:

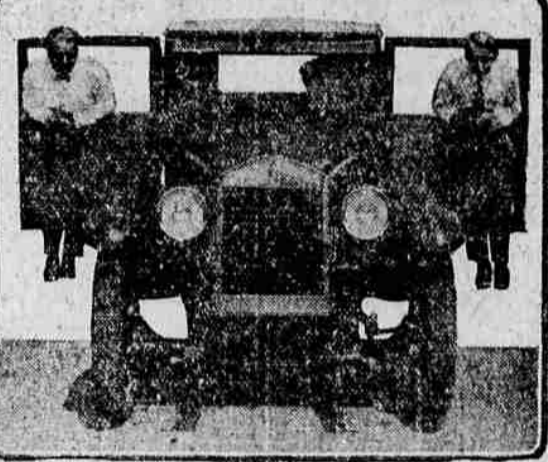
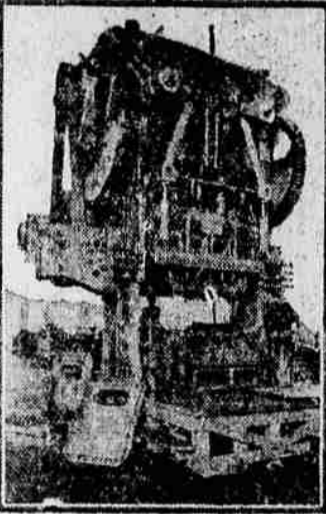
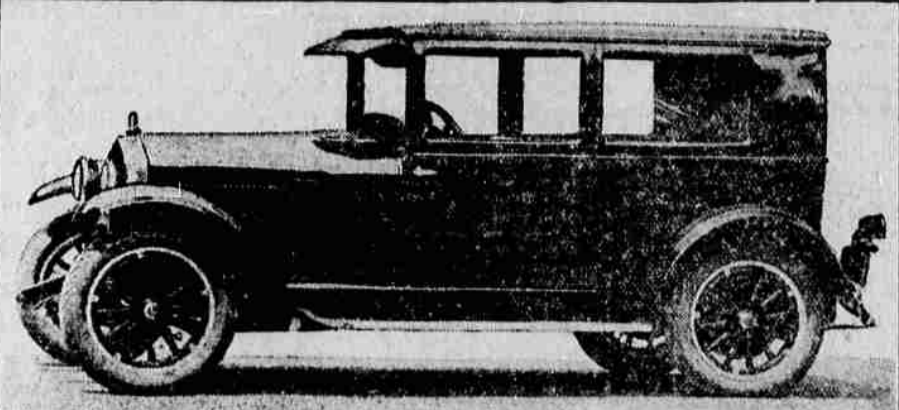
Hour	Cars	Hour	Cars
6-7	3	2-3	32
7-8	28	3-4	38
8-9	55	4-5	32
9-10	30	5-6	45
10-11	34	6-7	25
11-12	24	7-8	38
12-1	22	8-9	20
1-2	27	9-10	15

Travel is surprisingly uniform one hour with another, but it is observed that August has less in the early morning and late evening than July, probably due to the lengthening of the days. More outside cars were counted on the road in July than in August, which suggests that tourists may take to the road early in the season.

The count on the valley highway was made by Mr. Berry and his daughter, Frances Berry, and on the north road by Edna Finley and Lois Finley.

Inmates of Iowa State prison are allowed to keep and breed birds. There are now 500 canaries in the penitentiary.

Car Constructed Like Steel Building



Above—The new Essex all-steel coach described as "strong as a steel building." At the left, lower, is shown a 400-ton press which stamps out entire doors with a single operation. At the right two men are proving sturdiness of car by riding on outstretched doors.

Grade Crossing to Go Highway Engineer Says

NEW YORK, Aug. 21.—More and wider highways, elimination of grade crossings and more general use of the roads parallel to or near the main roadways are some of the measures to relieve highway congestion in the metropolitan area on Sundays.

Traffic jams in Westchester, Long Island, and New Jersey, according to Jay Downer, engineer for the Bronx river parkway commission, show the need for more highways, and for the elimination of grade crossings.

"If you eliminate grade crossings," said Downer, "you immediately double the capacity of your highways."

"Another way in which the capacity of highways can be doubled is by separating trucks and passenger vehicles. We should be building separate highways for trucks and passenger cars. Take the trucks off the passenger routes and you double their capacity. At the same time you facilitate the movement of trucks."

For five years since 1920, Canadian wheat crops have averaged 15.5 bushels per acre. The average for the same period for the United States was 13.3, Argentina 12.5 and Australia 11.7.

A luminous spider, the first ever discovered, was found recently by a scientific expedition in Central Burma.

The term sirloin (Sir-Loin), was originated by Henry VIII of England, who was so pleased at a dinner in which that cut formed the main item that he conferred the honor of knighthood upon the steak.

France has raised the salary of Marshal Poch to \$3000 a year.

SHE LOST HER FISH

LEE, Mass.—Little Miss Magie Decker, 10, whose greatest fun is the same as that of the distinguished angler of the Adirondacks is unperturbed over a narrow escape from drowning but loss of a fish is something else again. A big tug at her line tumbled her right into the Housatonic river.

"The worst of it was I lost my fish," she gurgled as she was fished out when going down for the third time.

A Seattle policeman uses roller skates to patrol his beat in the outlying districts of the city. His mode of transportation has the approval of his superiors.

WANTS STRONGER TOBACCO

NEW YORK—What the United States needs is not, as Tom Marshall said, a good five-cent cigar, but some really strong tobacco in the opinion of Dr. W. H. Ballow. He has much trouble finding it. For 45 years he has been smoking cigars the color of coal and drinking a quart of nice white milk daily as an antidote for the nicotine.

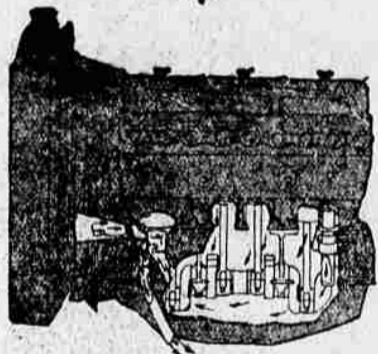
Women in Ainu, northern Japan, admire bearded faces so much that they tattoo their own to make them appear whiskered.

a vacuum cleaned crank case

The GREATEST BUICK EVER BUILT

Jennings & Shumate

WHEN BETTER AUTOMOBILES ARE BUILT BUICK WILL BUILD THEM



to protect closed car passengers from engine fumes

The new Vacuum Ventilator in the 1927 Buick absolutely prevents crank-case vapors and engine fumes from penetrating closed car interiors—a luxury never before attained.

Come in and see this, and the many other features of the Greatest Buick Ever Built!



Broadway-Wall St.



Latest of the many weddings between Broadway and Wall street. Flo Lane, pretty revue performer, becomes bride of Morris Roderick Volk, well-to-do New York broker.



YOU'D GUESS ALL DAY and couldn't guess what this is. It's the first National crank register ever built.

Your Favorite Vacation Spot brought hours nearer over better roads

by this lusty companion



"I NEVER made the trip in such a short time before—and the roads have improved a hundred percent"—this is the statement of an owner of an Overland Six, who drove it to his favorite fishing spot for the first time.

The difference in the trip was not in the roads—it was in the car he drove—the same difference that is making the Overland Six the great popular favorite wherever motor cars are being driven.

And the difference comes from modern engineering first applied to motor cars of this size and type by Willys-Overland. The power of the motor is a revelation—quicker to accelerate than any other power plant in its class—faster over the road—and out-pulling any other on hills.

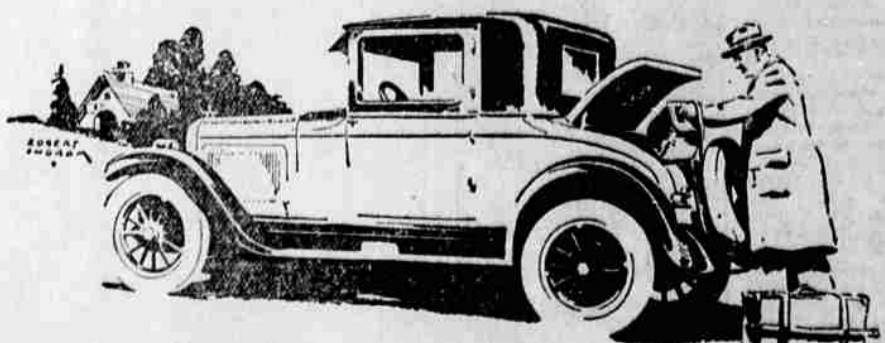
Swung low in the chassis—it delivers its full power in a straight line to the rear axle—valve construction—crank shaft balance—carburetion—lubrication—all modern and incorporating the best developments of America and Europe.

The better roads come from the balanced body construction—the long springs—the even distribution of weight—the elimination of side-sway and bumpiness over rough going.

Try this famous Overland Six—its superior value is shown in what it will do for you the minute you step on the accelerator.

\$895

COUPE
Touring \$895
Standard Sedan \$935
De Luxe Sedan \$1095
F. O. B. Factory
The New Willys Finance Plan allows:
Smaller down payments, & smaller monthly payments—the lowest credit cost in the industry.



OVERLAND SIX

Gettings & Hanks
Corner Fir and Jefferson Avenue