



AUTOMOBILE NEWS



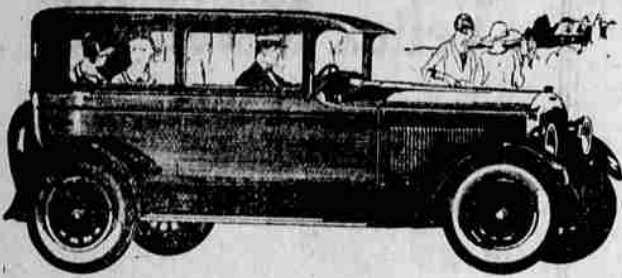
THERE'S A *New Paige* BROUGHAM - a Remarkable car at a Remarkable price!

DON'T miss seeing this New Paige Brougham—newest of the new Paige models. You will wonder how a car so fine can be sold for only \$1295 f. o. b. Detroit.

The beautiful Brougham body is larger than most sedans. Its interior is roomier. Enter or leave the rear seat from either side without disturbing those in front. Five adults relax comfortably on deep-tufted

cushions. The smart lines of this Brougham are enhanced by a finish of rubbed, waxed and polished lacquer in two pleasing tones of gray.

Powered with an ultra-modern, highly-perfected Paige-built motor and equipped with Paige-Hydraulic 4-Wheel brakes—you will find this car a leader in performance in any company. Ask for a demonstration—it will not obligate you in any way.



Features of this New Paige:
Improved Paige-built Motor, none more modern nor better lubricated—Full High-Pressure Oil Feed to all Rotating Parts, including wrist pins, cam shaft, auxiliary shaft and tappets—Counterbalanced Crankshaft—Silent Chain Timing, with automatic take-up—Air Cleaner—Metal Oil Lubricated Universal Joints—Springs 54 inches long—Shock Absorbers—Ball Joint Tires—Paige-Hydraulic 4-Wheel Brakes—Saw Steering through Ball Bearings—Saw Blade Steel, Light Acting Clutch—Short Throw, Easy Gear Shift—Co-incident Lock—Automatic Windshield Cleaner—Dual Gas and Heat Indicator—Stop Light—Dome Light

HARRIS F. FRENCH MOTOR CO.
Phone 805-W Open Evenings 1414 Adams Ave.

PAIGE MODELS WINNING FAVOR

The Paige entries in the mid-summer showing of new models have already attained so great a popularity that one of them, the 115-inch wheelbase brougham, leads the entire line in the factory's production, according to reports received from the Paige-Detroit factory by Harris F. French Motor company, local dealers. The other new model, the cabriolet, although the highest priced, is also being sold in quantities, and is being sold in quantities.

"Paige got a flying start this year with new models," remarked Mr. French, "having presented these cars some time before the usual season for new-car announcements. Both the brougham and the cabriolet, although appealing to widely different tastes and purses, scored immediate success."

"In the brougham, with its 115-inch wheelbase, the factory engineers have combined the full power of the Paige engine (the same power-plant that is used in the larger models) with a chassis noteworthy for ease of handling and a body of unusual spaciousness, and established a new low record in Paige selling prices."

"On the other hand, the cabriolet is the costliest car of the Paige line, the engineers having mounted in the standard 125-inch chassis a body so distinguished as to be of outstanding beauty. This car, which is readily convertible from the coupe type to the open roadster, has found favor both as a car for the business or professional man and as a striking sports model. It embodies several new features that cause comment from all who inspect it, especially the embossed leather used in the seats, the luxurious interior trim, and the ingenious arrangement by which the car is so quickly changed to an open model."

CONTRACT GOES TO UNION OIL

OAKLAND, Cal., Aug. 6.—A contract to supply the Oakland plant of the Chevrolet Motor car company with its entire requirements in lubricating oils and greases has been awarded Union Oil company of California, it was learned here recently.

In addition to providing the oil and grease requirements it is understood that the Union will also furnish a portion of the gasoline needs at this plant.

The lubricating oils and greases will be supplied from the Union's refinery at Olean, located on San Pablo bay, a few miles from here, and will be shipped in tank car lots to the plant of the automobile concern.

The Chevrolet factory at this point turns out each day approximately 400 cars, and each one as it leaves the plant will be lubricated with oils manufactured from western crude by Union Oil company of California. Many of these cars will also be powered by the popular Union non-detonating gasoline.

According to lubrication experts, correct lubrication is an item that is almost as important to the ultimate life of the car as its proper handling during the "breaking-in" period or initial 500 miles of driving. The oil must be all lubricant in order to provide the proper cushion for the moving parts.

On this basis the success of Union Oil company of California in securing this contract may be considered guarantee of the high quality of their lubricating oils.

NEW SWIMMING RECORD
PHILADELPHIA, Aug. 7. (AP) P.—Adelaide Lambert of the women's swimming association of New York, swam to a new world's record in winning the title in the 300-meter medley race in the women's national A. A. U. swimming championships at the nequib-con-tenant pool yesterday. She was timed in 5:01.

Old Indian Would Aid Younger Generation

PORT DUCHESNE, Utah, Aug. 7. (AP)—William Wash, leading tribesman of the Uintah tribe of Indian inhabitants of the Uintah reservation, recently through an interpreter pleaded for a better opportunity for the younger generation of red men of this section to earn a living from the soil.

In an address delivered in his native tongue at the industrial and agricultural exposition of the district he asked Dr. George Otis Smith, director of the bureau of geological survey, of the U. S. department of interior, to carry back to Washington a message to Secretary Work urging appropriations for the reclamation and development of this section of the state.

There is a destiny that shapes our ends, avoid grade crossings as we may.

BIG SCHEDULE OF PRODUCTION NOW UNDER WAY

Simultaneously with the announcements of the new Overland Whippet, the European type light car which was shown to better than 14,000,000 people in the first three weeks it was on display by Willys-Overland dealers, comes word from the factory that the production department is working on the largest schedule in the history of the organization, according to Gettings and Hanks, local dealers.

Retail sales of the Whippet have exceeded all expectations and at the present time are reported to be running at a rate approximately double that of the production schedule.

The Overland Six showed a 29 per cent increase over June of last year with the July figures promising to exceed this large percentage when compared with sales for the same month last year.

Officials of the U. S. Chamber of Commerce expressed surprise yesterday over the reported closing by the Angora government of the American chamber of commerce at Constantinople.

Chambers of Commerce Closed Up in Turkey

CONSTANTINOPLE, Aug. 7. (AP)—Dispatches from Angora, the Turkish capital, say the government had ordered the closing of all foreign chambers of commerce in the country.

The order is said to be directed particularly at the American, British, French and Italian chambers. They seldom turn turtle, however, unless they are imitating the hare.

Many claimants demanded a valuable pearl recently discovered in England; the fisherman who had the oyster from the bed, the fishmonger who bought it, the merchant who sold it and the servant who finally opened it and found the pearl. The judge awarded the gem to the man who finally bought the oyster.

Motorists--

We emphasize Personal Attention in running our business. Your patronage will be highly appreciated.

Texaco Gas and Oil
Fisk Tires

Heasty's Filling Station

Corner Second and Adams

FRANKLIN

Offers What Other Cars Cannot Offer

It will pay you to see the Franklin.

McCLURE'S
Distributors
Yakima, Walla Walla, Ponderline, La Grande,
LOCAL SALES AND SERVICE
1414 Adams Ave.
Sales: Bird Lewis, Geo. McClure
Service: Kenneth G. Keeney, Tracy Hollister.

volume makes possible these values

Series 115	
5 Passenger 2-door Sedan	\$1195
4 Passenger Sport Roadster	1195
5 Passenger Sport Touring	1225
2 Passenger Coupe	1195
4 Passenger Country Club Coupe	1275
5 Passenger 4-door Sedan	1295
4 Passenger Coupe	1275

Series 120	
5 Passenger 2-door Sedan	\$1395
5 Passenger 4-door Sedan	1495
4 Passenger Coupe	1465

Series 128	
7 Passenger Sedan	\$1995
5 Passenger Brougham	1925
4 Passenger Sport Roadster	1495
4 Passenger Country Club Coupe	1765
5 Passenger Sport Touring	1525
5 Passenger Coupe	1850

Actual Freight and Government Tax to be added.
Buick Motor Cars are now designated by their wheelbase lengths. Series One 110 has 114 1/2 inches of wheelbase. Series One Twenty is 120 inches from axle to axle and Series One Twenty-Eight measures 128 inches.

The GREATEST BUICK EVER BUILT



Jennings & Shumate



CAMP FIRE GIRLS HONORED HER with appointment to editorship of "Everygirl's," the national magazine. She is Miss Helen Gray, 18, of the University of Washington.

Chrysler Alone Offers Standardized Quality

An important new principle, assuring unsurpassed Chrysler performance to the buyer of any Chrysler Car

Walter P. Chrysler's principle of standardized quality manufacture is revolutionizing the buying of fine cars today.

For, at one step, it eliminates "purchaser's risk" . . . ends the buyer's doubts and fears as to quality . . . makes possible the purchase of either the lowest-priced or the highest-priced Chrysler with positive knowledge that the quality is equally assured and the value is supreme in its class.

Leading manufacturers have been striving for years to achieve this absolute evenness of quality.

An Unique Achievement

But Chrysler alone has achieved it . . . translated it into fact by an extraordinarily complete coordination of engineering and manufacturing resources. Chrysler standardization of quality goes back to the sources of raw material; it governs the very minutest operation; it makes certain that every unit is produced with the finest precision standards under the most rigid inspection; it even moulds the manufacture of accessories.

Of course, Chrysler models to meet the four great quality markets differ in price

in size of chassis, in richness of appointments, in speed and power—the model numbers representing miles per hour—but all are basically the same in rigid adherence to the same law of quality.

Advantages for the Buyer

Obviously, cars bearing one name . . . built by one organization . . . under one all-embracing system of standardized quality manufacture . . . must be essentially fine to a degree beyond comparison with other cars made under ordinary methods.

This most important of Chrysler advantages insures the superior and uniform quality which is the foundation of superior performance, dependability, comfort, economy and long life in every Chrysler.

That each Chrysler, because of standardized quality, is far ahead of any car near its price . . . in quality of construction and quality of performance . . . you can easily verify by comparative demonstration. Hundreds of thousands of Chrysler owners know this superiority to be a fact. We invite you to prove these superiorities of standardized quality for yourself.

NEW LIGHTER SIX CHRYSLER "60" COACH \$1195

Touring Car, \$1075; Roadster, \$1145; Club Coupe, \$1165; Sedan, \$1255. All prices f.o.b. Detroit, subject to current Federal excise tax.

CHRYSLER "70"—Phaeton, \$1395; Coach, \$1295; Roadster, \$1225; Royal Coupe, \$1495; Brougham, \$1745; Sedan, \$1545; Royal Sedan, \$1795; Crown Sedan, \$1895.

CHRYSLER IMPERIAL "80"—Phaeton, \$2495; Roadster (with standard standard equipment, sound wheels optional), \$2595; Club, two-passenger, \$2895; Coupe, four-passenger, \$2895; Sedan, four-passenger, \$3085; Sedan, seven-passenger, \$3195; Cabriolet, \$1495; Sedan-Limousine, \$3295.

Chrysler Model Numbers Mean Miles Per Hour

L. W. WEEKS

Jefferson Avenue Telephone 180-J