

WALLOWA LAKE LURES SCORES

Resort to Be Visited Tomorrow by Members of Northwest Real Estate Association.

Realization that Union county, instead of being dotted with sagebrush and harboring scores of jackrabbits, is as fertile a spot as exists in the Pacific Northwest...

Short automobile rides from La Grande during the past two days have convinced these visitors that the Grande Ronde valley's greatest have not been sung in vain...

Eye-Opener in Store. But tomorrow, when several scores of realtors and their wives will leave here and journey up the branch line until they reach the "Switzerland of America"...

Wallowa county, like Union, is one of the bright spots in the state. Verdant meadows, rolling grain covered hills, scenic mountains, cutting streams all go together to make the vista from the swift-moving automobile one to linger long in the memory.

Road One of Best. A macadam road, one of the best in the state, will take the real estate men from La Grande to Enterprise and thence to Wallowa lake. The drive will take between two and a half to three hours and will at no place be unpleasant.

Cars for the caravan are being prepared by the following committee: W. C. Perkins, P. B. Appleby, F. E. Kiddle, Fred B. Currey and Chase Bohnenkamp.

The departure will be made at 8 o'clock tomorrow morning and the first hour of the trip will take the visitors through Island City, Imbler, Elgin and into the Wallowa mountains.

Game Birds Along Roadside. Chinese pheasants, Eastern Oregon's famous game bird, will undoubtedly be seen along the roadside before leaving the valley for higher altitudes.

A few miles the other side of Elgin the party will enter one of the greatest scenic sections of the trip—the drive through Wallowa canyon.

After leaving the canyon the caravan will enter the fertile Wallowa valley and pass through the towns of Wallowa and Lostine before reaching the county seat.

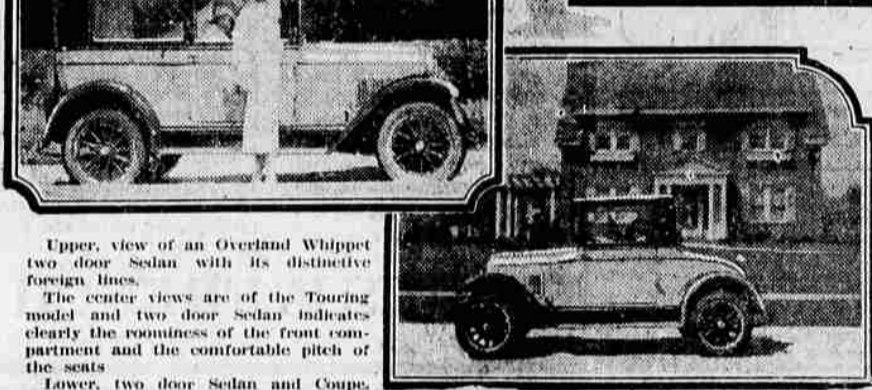
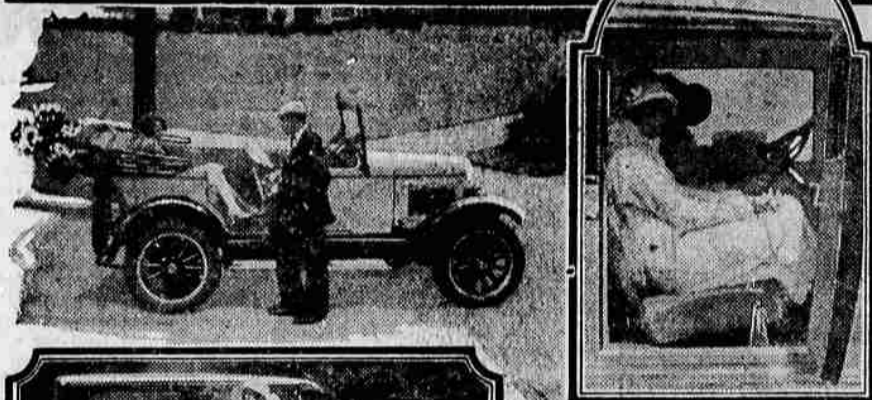
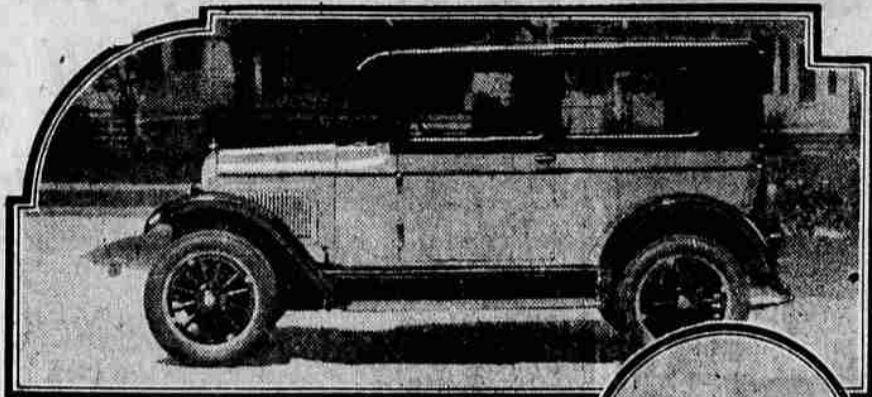
From Enterprise on the time will be short until arrival at the lake, four miles from Joseph.

Covers Large Area. Wallowa wonderland, centered around the Wallowa lake, one of the largest bodies of water in Eastern Oregon, covers a large area, only a small part of which will be seen by the visitors unless they stay several days, as some of them are intending to do.

In the lake and in nearby lakes and streams above Wallowa lake, fishing is said to be excellent at present by Manager MacPherson, who was in La Grande Tuesday.

Near the lake Wallowa and Anerold falls are worthy of a visit. Further away, taking a day to reach and return from, are Lee

The New Overland Whippet



Upper view of an Overland Whippet two door Sedan with its distinctive foreign lines.

The center views are of the Touring model and two door Sedan indicates clearly the roominess of the front compartment and the comfortable pitch of the seats.

Lower, two door Sedan and Coupe. The Coupe carries with it the same sweeping, low and graceful lines as the Sedan.

Stewart Working For Oregon Trail in Boise

BAKER, Ore., July 24.—That George Stewart, who was employed a few days ago by a group of towns along the Old Oregon Trail to meet tourists between Ontario and Boise and to present facts of road conditions and attractions on the trail, is already beginning to get results, is indicated by the tourists who register at the chamber of commerce here.

Many speak of meeting the Baker man at Boise or other points along the line. They invariably speak well of his work and say that the information he gives them always proves correct.

Mr. Stewart has reported his first few days' work to the chamber of commerce here. He has worked mostly in Boise, meeting tourists who stop at the camp there, interviewing them at the registration office, and lining up with the service stations of Boise and along the route.

ROADLESS AUTO IS PREDICTION MADE

Trackless street cars having become a reality, attention now turns to the development of the roadless automobile. The introduction of balloon tires was a hint of this. Cars now can negotiate roads with comfort that formerly was impossible. Traction is greatly improved and power is ample.

New methods of spring suspension are being experimented with so it may be possible for the body of a car to remain virtually level while the four wheels adjust themselves to all manner of conditions.

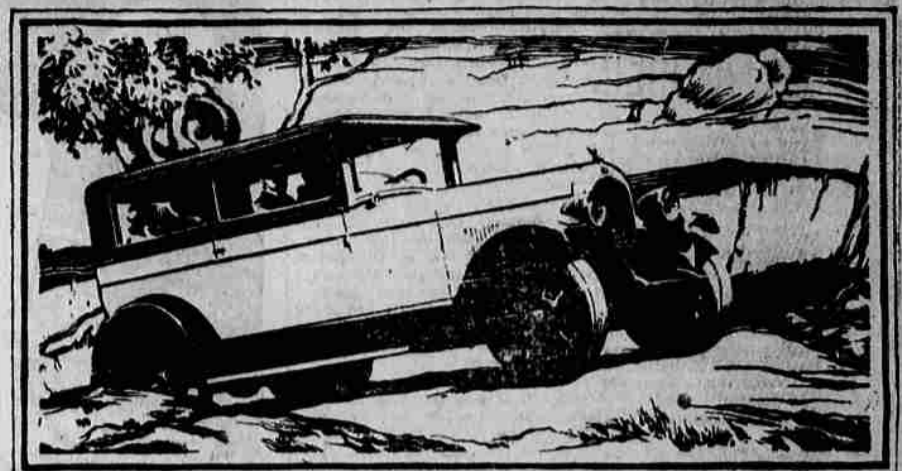
BEE SWARM PARKS IN AUTOMOBILE

A homesteaking swarm of bees is declared to have shown fine taste when it settled within a neat coupe parked on a Prescott, Ariz., downtown street.

But a bee expert soon was at hand with a smoke gun and an improvised hive, and the car was restored to its owner with a mere start of a honeycomb in an upholstered corner.

DRUNK DRIVING IS FELONY IN EAST

Among the motor bills approved by Governor Smith of New York is one making it a felony for an intoxicated person driving a vehicle to cause bodily harm to another person and requiring a report to the commissioner of motor vehicles instead of the tax commissioner.



Public Buys 18 Million Dollars' Worth of New Lower-Priced Lighter Six, Chrysler '60' in First Sixty Days

In the first sixty days following its introduction an enthusiastic motoring public has paid more than eighteen millions of dollars for the newest Chrysler, the new lighter six, Chrysler '60'.

Unfilled orders for many millions more are being rapidly met by vastly expanded production facilities.

This overwhelming success was inevitable.

For no other car approximating these low prices can match combination of noteworthy features—

Sixty miles, and more, per hour; unprecedented acceleration; extraordinary gas economy, easily exceeding 22 miles to the gallon; the striking beauty of Chrysler dynamic symmetry—

Astonishing riding ease and roadability; the safety of Chrysler four-wheel hydraulic brakes; oil-filter and air-cleaner; full pressure lubrication; 7-bearing crank shaft; impulse neutralizer; road levelizers front and rear; roomy and luxurious bodies.

Your nearest Chrysler dealer is eager to demonstrate these and scores of other superiorities.

Chrysler Model Numbers Mean Miles Per Hour

CHRYSLER '60'—Touring Car, \$1075; Roadster, \$1145; Club Coupe, \$1165; Coach, \$1195; Sedan, \$1295. Ask about Chrysler's attractive time-payment terms. More than 4700 Chrysler dealers assure superior Chrysler service everywhere. All prices f. o. b. Detroit, subject to current Federal excise tax.

CHRYSLER '60'

L. W. Weeks

Jefferson Avenue

Telephone 180-J

A Careful Invoice.

A motorist, on a long trip, needed some water for his car. He pulled up in front of a farmhouse in a backwoods region, and had just started to make his request when a boy came around the corner of the house.

"Jim," asked the farmer, "did you drive up them cows like I told you?"

"Sure I did, pop."

"Get 'em all up?"

"Yep."

"Count 'em?"

"Yep."

"How many was there?"

"One."

"That's right." — American Legion.

Fifty-Fifty.

"I hear you own a motor car now."

"Well, I'm in partnership with the motor car company." — Toronto Telegram.

COUNT CARS ON TWO HIGHWAYS

ENTERPRISE, Ore., July 24.—By the traffic count made July 15, 468 cars passed over the valley highway at J. A. Engleton's ranch, and 47 cars passed Camp L, on the north road. In both instances a gain over June 16 was indicated, when the count in the valley was 329 cars and on the north road it was 66. The state highway forces make a count each month through the summer.

P. J. Berry and Frances Berry made the count in the valley and James Barnes and Elmo Kibbey, at Camp L.

Beginning at 6 a. m. and quitting at 10 p. m., the travel was surprisingly uniform, hour by hour, in the valley. The figures are:

Hour	Cars	Hour	Cars
6-7	15	2-3	39
7-8	26	3-4	38
8-9	24	4-5	39
9-10	27	5-6	39
10-11	26	6-7	35
11-12	34	7-8	34
12-1	29	8-9	28
1-2	32	9-10	22

Vehicles on this road were classified thus: 374 Oregon cars, 42 cars from other states, 2 stages, 41 trucks, 7 motorcycles, no horse-drawn vehicles.

On the north road, they were classified thus: 48 Oregon cars, 5 cars from other states, 2 stages, 9 trucks, no horse-drawn vehicles.

The June count of this year, 329 cars, may be compared with the count made the same month in previous years. In 1924 the count was made June 17 and showed 455 cars; in 1925 the count was made June 17, and showed 512 cars. The count last year in this month calls for a word of explanation. The free chautauque was on in Enterprise that day and the travel was strongly influenced by this. Between 7 and 8 o'clock in the evening, 50 cars passed the corner, and the number rose to 54 between 8 and 10 while it was about normal the other hours of the day. In any case, June of this year shows a decrease from two previous years.

A count was made Sunday, Oct. 18 last year and this showed 413 cars on the valley road and 147 at Camp L. Sunday travel is much heavier than week days, and the grade on the north road had just been finished and opened and many persons were curious to ride over it.

Cordie: I see the tops on these cars are much lower than last year.

Roy: Yeah. They're cutting down the overhead.—V. M. L. Ship-st.

60 Bushels to the Acre

It doesn't matter to the man who uses Veltex Oils and Greases whether the grain is heavy or light—the engine works good and delivers all the power needed.

Phone us—we know what to give you for best results in your combine engine.

FLETCHER OIL COMPANY First Independent in Oregon.

USED FORDS

SEE THESE CARS BEFORE BUYING!

1924 Ford Touring

1924 Ford 4-Door Sedan

1924 Ford Tudor Sedan

1924 Ford 4-Door Sedan

Ruckstell axle; new paint.

M. J. GOSS

Studebaker Sales and Service