

Highway and Auto Dope

# AUTOMOBILE NEWS

## WESTERN MILLS GET CONTRACT

That the huge orders for western lumber now being placed by automobile body building companies are being shipped to the Fisher

will in the near future be heavily increased is indicated by the success of experiments with veneer and plywood for coachwork conducted during the past year, according to Avery Harrison, local Chevrolet dealer.

Already the Fisher Body Corporation in California is using vast quantities of Pacific Coast lumber in the construction of closed Chevrolet models. Floorboard, toeboard and runningboard materials are being shipped to the Fisher

plant at Oakland from lumbering districts throughout this territory. As a result of tests made by Fisher experts in their various factories, it is highly probable that fine veneer will be used extensively for setbacks and other automobile body units where a combination of strength, comfort and artistic finish is required.

**Airplane Develops Veneer**  
Veneer came into its own during the war when a scarcity of hardwood set airplane builders casting about for a suitable substitute. It was found that wood in five and seven piles not only served as well as hardwood but actually excelled in the matter of strength and resiliency. Recently this type of material has spread to many new uses where strength and light weight are essential, such as in aircraft and motor boats.

Laminated fir has an advantage in that it can be trimmed to exact size, eliminating re-cut and reducing waste.

Extensive use of lumber—the west's biggest product—in manufacturing automobiles has a profitable significance out here. It means that a fair share of the vast sums of money expended yearly for cars by Pacific Coast residents is being returned here in the purchase of body materials.

During 1925 more than 50,000 Chevrolets were sold in the far west, most of them with closed bodies. A half million of this make of automobile were manufactured altogether last year and each one of them had his share of wood construction.

**Comfort Increased**  
It has been discovered by engineers that the proper combination of wood and steel, while originally more costly than either of the two materials used individually, is in the end, the most economical because it is the most efficient.

The item of comfort in wood-framed seats is not to be ignored.

## NEW FEATURES IN NEW MODEL

The refined Star four touring car embodies several interesting new features, according to Jim Morelock, local Star dealer. In addition to sweeping chassis changes which improve riding qualities, sturdiness and roadability, a new body by Hays-Hunt adds further to the comfort and beauty of the car.

"In general appearance, the touring car has been improved by the smart stream lines and beautifully proportioned heavily-nickeled radiator that now characterize the Star models," he says.

"The body is lacquered in a highly attractive shade of royal blue, set off with a gold stripe. The one man top is of heavy, black, highly finished, water proofed, artificial leather, with side curtains to match, opening with the doors. Windshield is double ventilating, upholstery is of good quality black artificial leather and wheels are black wood, artillery type, with 20x3 1/2 clincher cord tires on demountable rims.

Exceptional seating capacity and leg room has been provided in the refined Star touring, which offers roomy accommodations for five persons of generous proportions. Low price and operating economy makes this car an attractive value and assures its popularity."

Fisher's construction of automobile seats is patterned along the lines of a fine old chair, solid and inviting with ample surface to which the heavy upholstery may be made secure.

In addition, wood steel bodies are cool during hot weather because the wooden sides and top

## TRUCKS SUPPLANT CAMELS, AUSTRALIA COMPANY REPORTS

Camels, those dependable beasts of burden, which have carried the wealth of the Orient since early Biblical days, are finding their usefulness in West Australia curtailed by the adoption of the motor truck.

In the vast stretches of grazing land in West Australia where sheep raisers number their flocks by the hundred of thousands, camel caravans for years have been the media in hauling the wool clip to the warehouses near the seacoast. The loads they were able to haul were considered large for such beasts, but their gait was slow and often rising markets got away from growers before they were able to make delivery of their wool clip.

But this condition is rapidly passing. Adoption of Graham Brothers Trucks by these sheep raisers have enabled them to rush their wool clip more quickly to the marketing points and consequently convert it into money more readily.

This situation was disclosed by W. J. Winterbottom, managing director of the Winterbottom Motor company, dealers for Dodge Brothers, Inc. at Perth, W. A., and Albert S. Harden, Director of the Standardized Motors, Ltd., who, with Jack Kloster works manager of the same company at Sydney, N. S. W., also Dodge Brothers Dealers, are visiting the factory of Dodge Brothers Inc., Detroit, according to word received by E. C. Smith, local automobile dealer.

heat rather than absorb it. The pith helmet, official headgear of the tropics, in an example of how wood and fibrous substances act as a heat insulator without radiating warmth from the shaded side. The same effect holds true in winter; wood is not susceptible to extreme temperatures.

What is perhaps most important to the average motorist is the absence of rattle and rattle where wood coachwork is employed. Fine trimming, tight connections and close-fitting joints are responsible for the quietness of bodies of this type; squeaks and other offensive noises common where there is a metal-to-metal contact are unknown.

DETROIT, June 12.—Lumber used annually by the Fisher Body Corporation exceeds 200,000,000 feet or 20,000 carloads. This would provide homes for 100,000 persons. Additional Fisher plants for the Pacific Coast region are under consideration as the west is the only region in a position to hold the lumber market for any length of time.

## Our Pumps Are Working

You might think to look at our place that we were not doing business—but we are, although a bit torn up.

Our new building will soon be completed which will add to our appearance. Appearance does count, but the personal service given to our many motoring friends makes them like to come back for Veltex Gas and Motor Oil.

La Grande Filling Station  
Kuhn & Zweifel

# Leads all others in its Power Efficiency

The motor in this new Willys-Knight Six "Seventy" is the most efficient ever developed in America.

From a bore of 2 15/16 inches and a stroke of 4 3/8 inches it develops greater horsepower per cubic inch of piston displacement, throughout its entire range, than any other American built power plant.

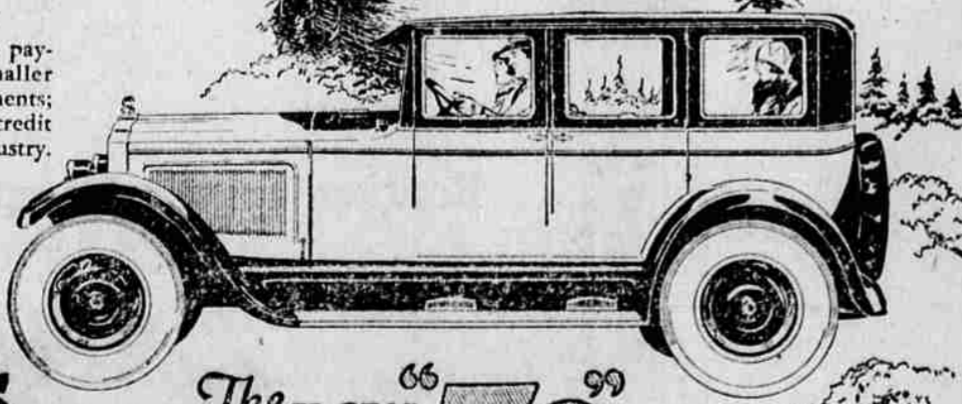
The principles of high speed engine design are utilized in the Knight sleeve valve motor with startling results. A speed capacity well in excess of 60 miles an hour, amazing hill climbing ability and startling acceleration make this car the leader in performance among all cars in its price or size class.

Body design and finish are in full accord with the high quality of the mechanical structure. Low deep seats afford unusual riding comfort—there is an amazingly satisfactory amount of room in the body—the doors are wide and the step from the running board to the interior of the car is low and convenient.

Try it out—you will find in it a greater satisfaction than you have ever before experienced in any motor car.

The New Willys Finance Plan

Smaller down payments and smaller monthly payments; the lowest credit cost in the industry.



\$1495

TOURING \$1295  
COUPE \$1395  
STANDARD SEDAN \$1395  
P. O. B. FACTORY

# The new "70" WILLYS-KNIGHT 6

## Gettings & Hanks

Corner Fir and Jefferson Avenue

## Radio

SUNDAY, JUNE 13.

Mountain Standard Time Stations  
KOA, Denver, Colo. (322.4m-830kc), 10:55 p. m., Trinity Methodist Episcopal church; 6:30 p. m., Little symphony orchestra; 7:40, Trinity Methodist Episcopal church.

Pacific Standard Time Stations.  
KFL, Los Angeles, Cal. (467m-642kc), 7:30 p. m., Grebe symphony string ensemble; 7:30-8, Jim, Jack and Jean trio; 8-9, Acoulon organ; 9-10, Merit Denman and his uke and others; 10-11, Packard Six dance orchestra.

KFWB, Hollywood, Cal. (322m-1190kc), 9-11 p. m., Warner Brothers Sunday night movie frolic.

KGW, Portland, Ore. (491.5m-610kc), 10:45-12 noon, First Congregational church; 7:30-9 p. m., services, First Presbyterian church; 9-10, Chevrolet symphony orchestra.

KNX, Hollywood, Cal. (336.9m-880kc), 7-8 p. m., Carl Elinor's concert orchestra from Circle theater; 8-9, First Presbyterian Church of Hollywood; 9-10:30, program, Beverly Hills Nurseries.

MONDAY, JUNE 14

Mountain Standard Time Stations  
KOA, Denver, Colo. (322.4m-830kc), 6:30 p. m., Brown Palace string orchestra; 8, Flag day exercises, Denver Lodge No. 17, BkK.

Pacific Standard Time Stations.  
KFL, Los Angeles, Cal. (467m-642kc), 7-8 p. m., Owen Fallon and his Californians; 8-9, popular program; 9-10, program, Walter M. Murphy Motors company also broadcast by KPO; 10-11, program arranged by Melk/John Brothers.

KFWB, Hollywood, Cal. (322m-1190kc), 6:30-7:30 p. m., Pontiac six dinner hour; 7:30-8, program, Dr. Ralph Mitchell and Associates Dentists; 8:10-9:10, program, Corduroy Tire Stores, Inc.; 9:10-10:10, program, Eureka Vacuum Cleaner company; 10:10-11, Warner Brothers frolic.

KGW, Portland, Ore. (491.5m-610kc), 6-7 p. m., dinner concert; 8-9, vaudeville entertainment; 9:10-12 midnight, Cole McElroy's dance orchestra.

KNX, Hollywood, Cal. (336.9m-880kc), 7-7:30 p. m., Mutual Motors mirth contest; 7:30-8, program, Overell's Furniture company; 8-9, L. W. Stockwell company program; 9-10, Stephens Motors minstrel show; 10-11, Goodrich Silvertown Cord dance orchestra; 11-12, Coconut Grove dance orchestra.

KWSC, Pullman, Wash. (348.5m-860kc), 8-9:30 p. m., Aloha Harmonizers; Horace Trimble; Ola Bab, James Lemley, Will DeNeff; songs, L. A. Kirtland.



This Nash Light Six 4-DOOR Sedan offers you feature after feature others in its field do NOT—plus an unequaled BRILLIANCY in performance. A drive in it is a real TRAVEL-TREAT.

La Grande Nash Co.  
A. R. Trachsel 1302 Jefferson Ave.

# A Used Car is only as Good as the Dealer who Sells it

In buying a Used Car you are forced to depend upon the reputation of the dealer who sells it. He alone is in a position to know the history and present condition of the cars he sells. Dodge Brothers Dealers are business men, operating permanent establishments under valuable franchises. They look upon every Used Car purchaser as the ultimate buyer of a New Car, and they value his good will accordingly.

Buy a Used Car of any Dodge Brothers Dealer and you will receive honest value for your money. And right now is a particularly good time to buy.

Increasing sales of new Dodge Brothers cars—following radical improvements in beauty and performance—have everywhere brought in an exceptional selection from which to choose.

Touring Car \$963 Roadster \$958  
Coupe \$1015 Sedan \$1077

Delivered  
See the Dodge Steel Body on Display in Our Showroom  
**L. C. SMITH**  
**DODGE BROTHERS**  
**MOTOR CARS**