

Highway and Auto Dope

Traffic and Tourist News

AUTOMOBILE NEWS

Keep Can of Oil in Car, Dealer Advises

Now that the "Call of the Open Road" is sounding, motorists are planning many trips out into the country. One of the greatest joys of a trip is in the planning while the biggest disappointments are

from the lack of it. Prepare for your trip and you will usually have little difficulty. One of the important things to remember is to have the car in the best possible condition. You want to have all of your time for enjoyment. Free from worry about the car. "Better be safe than sorry" is a slogan broadcasted by Local Veedol dealers. They suggest that motorists

EXPERT GIVES ESSEX PRAISE

That English motor car manufacturers, seeking to improve the riding qualities of their cars, have turned to America for new ideas in spring suspension, and that several of them shortly will copy one of the best known and widest selling Yankee automobiles, is disclosed in a recent copy of the London Sunday Pictorial Review.

The British magazine, containing a "leading article" by E. M. Wright, celebrated British automotive engineer and motor critic, featured trials made on the "Essex saloon"—as the coach is known in England.

Discussing the spring of the Essex, Mr. Wright wrote: "I liked everything about the Essex (except its nationality) but, above all, I liked the springing."

"The makers do not pretend that there is anything out of the ordinary in the design of the matter, beyond the fact that the rear springs are splayed outward. But certainly the results are quite exceptional. On the worst roads the only motion imparted to the body is a slow, gentle rocking. Furthermore, the car holds the road like a leech at any speed within its range, which goes up to over 50 miles an hour."

"The low center of gravity and said, "There are over 5,000 Veedol dealers on the Pacific Coast and most of them carry a representative stock of Veedol oils and greases in both bulk and packages. Motorists can find a Veedol dealer in practically every city on the coast. Yet, the Western motorist is a great explorer and usually tries to hit out for some spot where mother nature is still in her original state. It is for this reason that motorists are warped to be prepared when they go out on a trip. There is a lot of assurance in knowing that you have a can of Veedol tucked away in the car for emergency use. I find that the average motorist is mighty careful about this and the demand for case goods so far this season indicates that the touring season is in full swing."

the excellent suspension and road-holding qualities afford the feeling of absolute safety which is one of the many pleasant impressions conveyed by a run in this car."

"Of the coachwork, I can hardly speak too highly. Whether one likes the appearance or not, is always a matter of taste. For myself, I must say that I like the lines of the Essex as well as those of any other saloon car on the market. For a closed car, it looks neat, even handsome, without being sporting."

"Which is the preferable road to Smithville—by way of Jonesboro or by way of Brownstown?"

"Well, some prefer one, some the other."

"Why the preference?"

"Well, the ones who go via Brownstown prefer the Jonesboro way, and vice versa."

Proverb Improved: A fool and his automobile are best parted.

Speed Cop: You were doing forty-five.

Silver Driver: Oh, you flatterer.

D. S. M. A. MAKES SEASON PLANS

In anticipation of what promises to be the greatest tourist season Oregon has ever experienced, and in keeping with its policy of providing every possible benefit for its own members, during the past two weeks the Oregon State Motor Association which holds the A. A. A. franchise for the entire state, has effected several important changes in its various service departments. An increased and even more efficient service than ever before offered will be made available for three A. A. A. members touring in this state as a result of the new order which has just been issued from headquarters at Portland.

Three additional branch touring and information bureaus, an extension of emergency road service through the establishment of several new stations at different

points throughout the state, maintenance of a night information service at the Portland office and the immediate preparation of several new maps of roads which have hitherto been unlogged are among the things covered by the new order and some of which have already been made effective. The foregoing are only a few of the changes having to do with improved service for club members that are receiving consideration by the board of directors of the association as a result of the recommendations made by general manager George O. Brandenburg, on his return from a tour of investigation of the leading motor clubs of the east recently.

With the three additional touring and information bureaus which are to be established this month, the association will have in active operation throughout the state, aside from the headquarters office in Portland, a total of twelve branches will be located at the following points: One at Salem, to care for traffic on the east side Pacific highway, another at Coquille at the junction of the Roosevelt and Roseburg-Coos Bay highways and the third at Seaside marking the end of the Old Oregon

Trail. Other branch offices of the association are located at Corvallis, Eugene, Bend, Roseburg, Grants Pass, Medford, Klamath Falls, Ashland and Marshfield. It is expected that additional branches will be established in eastern Oregon territory in the near future.

The emergency road service department of the Oregon association has been extended until now there are 48 stations under contract to render service to A. A. A. members in this state. The western part of the state is fairly well covered by road service zones and new stations are being established in central Oregon territory. Eastern Oregon highways will be brought under the system during the early summer and it is planned to have the main traveled highways throughout Oregon blanketed with emergency road service zones by this fall.

The emergency road service feature of motor club service is one that especially appeals to car owners because of the assurance it affords of prompt assistance in the time of need. Emergency road service of the Oregon State Motor Association is available for members of all A. A. A. clubs day and night, Sundays and holidays included.

Perfect Car Washing

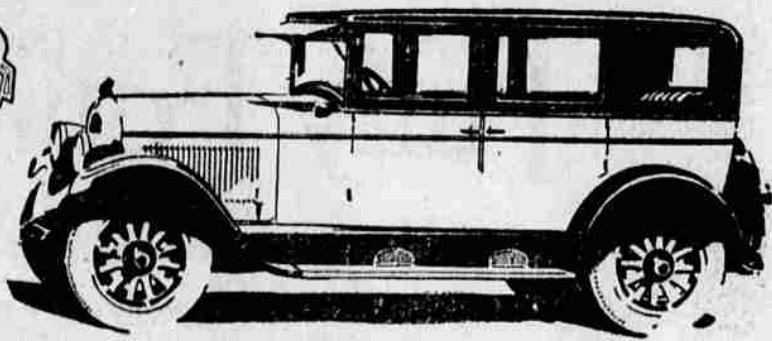
The new E. B. Lacer Car-Washing Machine which is now installed and in operation, will remove all dirt, grease, oil, grit or any other foreign matter on the body or chassis of the car. It effects a thorough cleaning down to the finish of the car, but at the same time preserving that finish and turning the car out new and bright with the original lustre. An air compressor atomizes the cleaning liquid, forcing a soft spray into every part. Oil from the newly oiled roads which will quickly ruin the finish of any car if allowed to remain can be quickly and completely removed. This machine is also an excellent motor cleaner.

Protect your car's resale value by preserving the finish.

Playle Oil Co.

Fisk Guaranteed Premier Cords at less than mail order prices.

The New CHRYSLER '60'



Chrysler "60" Quality Features

- 1 6 Cylinder Chrysler Motor
- 2 54 brake horse-power.
- 3 60 miles per hour and more.
- 4 5 to 25 miles in 7 1/2 seconds.
- 5 Easily 22 miles to the gallon.
- 6 7-bearing crankshaft.
- 7 Aluminum alloy pistons balanced to sixteen one-hundredths of an ounce.
- 8 Impulse Neutralizer—not a balancer, but a device that absorbs the natural impulse reactions common to all internal combustion engines.
- 9 Puriflor—filters all crankcase oil.
- 10 Centrifugal air cleaner—protects cylinders and pistons from road dust and grit.
- 11 Full pressure oiling system—a film of oil for all bearings, insuring long life.
- 12 Semi-automatic plus manual spark control.
- 13 Manifold heat control.
- 14 Chrysler roadability—easy to start, easy to handle at all speeds, always safe.
- 15 Chrysler hydraulic four-wheel brakes.
- 16 Levelizers, which eliminate road shocks, at both front and rear.
- 17 Chrysler dynamic symmetry of body design.
- 18 Great roominess combined with Chrysler compactness for easy parking.
- 19 Duo finish in striking color combinations.
- 20 Full balloon 30 x 5.25 tires.

Arrange to drive this sensational new lower priced Chrysler Six and enjoy for yourself its many features of superiority.

A Lighter Six of Chrysler Quality and Value At New Low Prices

For you who would limit your motor car investment to any of the lower-priced sixes, Walter P. Chrysler presents another sensational quality product—the new lighter six-cylinder Chrysler "60".

In the new lighter Chrysler "60" are the same brilliant Chrysler engineering, the same high quality of materials, the same superior craftsmanship, the same rigid test and inspection, the same assured endurance and dependability that have won such public acclaim in all other Chrysler cars.

Sixty miles, and more, per hour unprecedented acceleration; gas economy of 22 miles per gallon; the striking beauty of Chrysler dynamic symmetry; astonishing handling

and riding ease—these are only a few of more than a score of features heretofore found in similar degree only in sixes of far higher price.

The lower price of the new lighter "60"—the lowest price at which a Chrysler six has ever been sold—is merely a difference of size, of speed capacity, of special performance.

This means that the new lighter "60" will outclass every other car in the field of the lower-priced Six—just as every Chrysler outclasses every other car in its particular field.

You will find us eager to demonstrate to you the extraordinary Chrysler qualities which make the new lighter Chrysler "60" at these new low prices the most sensational value in all motor car history.

- Touring Car, \$1075
- Roadster, \$1145
- Club Coupe, \$1165
- Coach, \$1195
- Sedan, \$1295

All prices f. o. b. Detroit, subject to current Federal excise tax

L. W. Weeks

PONTIAC SIX COACH Smashes El Paso-Los Angeles

Record!

\$995 DELIVERED HERE

COACH OR COUPE

Oakland Six, Companion to the Pontiac Six—\$1025 to \$1295. All prices at factory. Easy to pay on the General Motors Time Payment Plan.

Again!—a strictly stock Pontiac Six Coach proves its stamina, endurance and sturdiness of construction by clipping 5 hours 50 minutes off the previous record from El Paso to Los Angeles which was made by an open car.

—by beating the fast Golden State Limited train by 2 hours and 2 minutes.

—by exceeding the fastest time ever made between these points except by airplane.

—by covering the 993 miles of deplorable roads over mountains almost a mile high and across deserts 250 feet below sea-level without a repair, a mechanical adjustment or a tire change.

993 miles at an average speed of 46.61 miles per hour is more abuse than an owner would

give his car in a year's hard driving.

Less than 30 days ago the Pontiac broke the Los Angeles-Albuquerque Record and established a new round trip Record.

These are performances never before accomplished by any motor car—large or small—performances that prove the Pontiac is built to withstand the toughest going.

The Pontiac... Chief of Sixes... the husky low priced car... Coupe or Coach is only \$995 delivered here.

A Real Record—993 miles in 21 hours 18 minutes, averaging 46.61 miles per hour

Chas. McCrary Washington Avenue Garage

A Knockout for Father Time
THE PONTIAC SIX
 driven by
Harry Neville and A. L. Peterson
 of BEVE GARTZMAN, Inc., Los Angeles, Oakland and Pontiac, Texas

Left El Paso, Texas
 May 12th, 7 A. M.
 (PACIFIC TIME)

Arrived Los Angeles
 May 13th, 4:18 A. M.
 (PACIFIC TIME)

21 hrs. 18 min. after leaving El Paso OFFICIALLY CHECKED AND TIMED BY WESTERN UNION