

**REPORT MADE ON OIL WORK**

Division Engineer of Highway Department Tells of Progress During Week.

Progress of oiling operations in Eastern Oregon this week end is given by H. G. Smith, division engineer, in the following report, made public yesterday:

On the Old Oregon Trail between Arlington and Pendleton, road oiling is now complete. East of Pendleton to the summit of the Blue Mountains there will be no road oiling operations under way.

On the Old Oregon Trail west of La Grande, road oiling may be under way on Monday, June 7, and today. Water tanks and grade

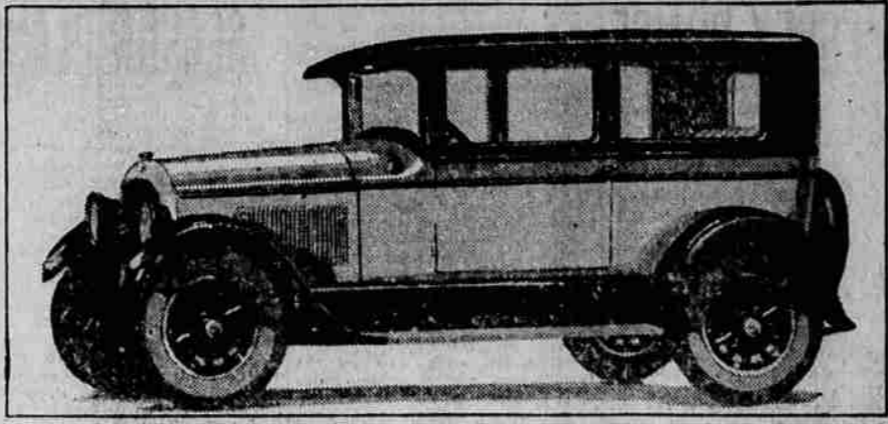
equipments will be in operation. On the La Grande-Wallowa Lake highway between Island City and Elgin, fresh oil will be encountered between Island City and Rhinhart, and detours provided should be used. The highway between Rhinhart and Elgin will be completely oiled and probably opened for traffic.

**Baker Street Clear**  
No oil operations will be encountered between La Grande and Baker, and Baker to Durkee on the Old Oregon Trail.

On the Old Oregon Trail west of La Grande, road oiling operations will probably be under way on Monday June 7. No detour available. Flagmen will be stationed at all times at a reasonable rate of speed.

On the Old Oregon Trail from Durkee to Huntington, and from Huntington to Ontario, for a short distance road oiling operations will be encountered. No detours are available and Flagmen will be stationed to direct traffic and traffic will be allowed to proceed over the portion of the highway being oiled at a reasonable rate of speed.

**Paige Introduces New Model**



This latest product of the Paige-Detroit Motor Car company, represented here by Harris French, is built on a chassis ten inches shorter than the standard Paige line, recently introduced. The engine, however, is the same as that used in the larger models. This new brougham is finished in two tones of lacquer, Arizona gray above, Pueblo gray below, with ivory stripes. Wide doors make access easy, and the interior is of real roominess. Standard equipment includes hydraulic four-wheel brakes, automatic windshield wiper, continental steering and ignition lock, shock absorbers at the front, engine heat indicator and gasoline gauge on the instrument board, remote control door handles, cowl ventilator and engine air cleaner. Tires are 31 x 5 1/4.

**CHRYSLER IN FOREIGN FIELD**

To meet the rapidly increasing demand for Chrysler cars in Europe and to insure adequate service there, the Chrysler sales corporation has established a new assembly and service plant in Antwerp, Belgium, states L. W. Weeks, local dealer.

The new company, to be known as Societe Anonyme Chrysler, will operate as a subsidiary of the parent organization in Detroit, and eventually will take care of all Chrysler requirements for continental Europe, including Scandinavia.

The chief purpose in establishing the new plant is to assure good service to Chrysler owners in Europe, although later on a number of manufacturing operations may be carried on there as well.

The selection of Antwerp as the location for the new plant is particularly advantageous, both industrially and geographically. Antwerp is a city of more than 325,000 population, and is exceptionally progressive. It is the industrial center of a densely populated district which extends approximately 500 miles eastward and southward. It is the third largest seaport in the world and provides splendid ocean shipping, while its rail facilities are also far above the average.

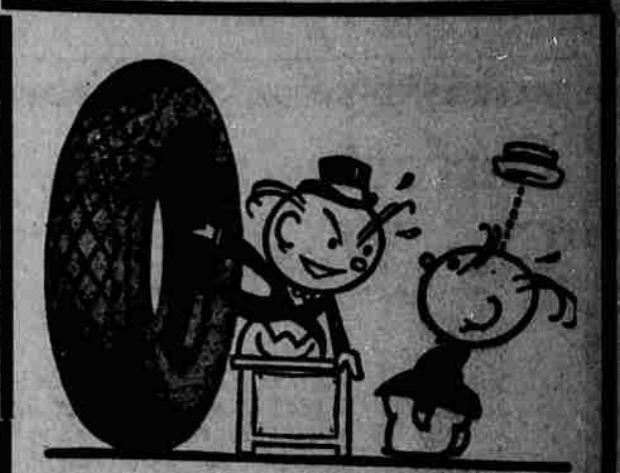
**Good Labor Available.**  
The building in which the new plant will be located is of modern brick and tile construction, with saw-tooth roof, and is near the center of the city. It has its own spur track and is not more than one hundred yards from the Royal Belge docks. It is within easy walking distance for a larger number of skilled workmen, many of whom have had experience in automobile work.

A radiator that neither leaks nor discharges freely through the overflow pipe should be drained off more frequently than one that requires frequent additions of water. If the cooling system has a habit of discharging water through the radiator overflow pipe when the engine first warms up, the system will keep exceptionally clean because sediment is likely to be forced upward as the water bubbles upward to overflow.

**Franklin Shipments in May Continue to Jump**

The local Franklin dealers states that factory shipments during the first two weeks of May are 92 per cent ahead of the same period in April.

Demand for the Sport Sedan and Touring are features of Franklin's May business. Also sedan deliveries are running 25 per cent ahead of corresponding period in 1925.



EVERY so often SOMEBODY tells the world AND whatever else WHO'LL listen to him THAT the average American IS extravagant AND THAT he squanders HIS money MAYBE THAT's true IN some parts OF the country BUT we don't think it APPLIES to La Grande MOST folks here are THRIFTY THEY want the most FOR their money AND that's certainly SENSIBLE AND business-like SO we aim to give 'em GENUINE economy IN everything we sell WE don't keep anything IN stock that

ISN'T a good buy FOR instance WE are offering A 30 x 3 1/2 Cord Tire A PATHFINDER NOW for \$10.95 THE 28 x 4.00 Pathfinder BALLOON for \$16.45 AND other sizes AT equally low prices BUT price isn't THE whole thing PATHFINDERs give you LONG, trouble free service PATHFINDERs possess EVERY superior advantage THAT quality materials AND expert workmanship CAN put into a tire AT these prices AND every tire we sell IS backed by HONEST-TO-GOODNESS SERVICE WE thank you

W. H. Bohnenkamp Co.

**The Conclusion Is Plain FRANKLIN**

If you want the most advanced type of motor car--not only in engine design, but in quality, performance and style--you want the copper radiation air-cooled Franklin. In every respect it is the car for the next ten years.

Now--at new low prices.

**McCLURE'S**

Distributors  
Yakima, Walla Walla, Pendleton, La Grande.  
LOCAL SALES AND SERVICE  
1414 Adams Ave.  
Sales: Bird Lewis, Geo. McClure  
Service: Kenneth G. Keeney, Tracy Hollister.

**STAR CARS PASS RIGID TEST AT WALLA WALLA**

WALLA WALLA, June 5--(Taken directly from the show room floor and having been driven no more than 10 miles previously, two Star cars, four and six cylinder models, were driven over the well-known Russell Crook grade on the Mill Creek scenic loop. Frank Brotherton, local Star car dealer, piloted the six while W. C. Yokum drove the four.

The cars first went over the Walla Walla side and then the Welkesham side. The ascent was made a second time for the benefit of a photographer who accompanied the party, the second trial being from a standing start in high gear.

Charles Wiseman, G. N. Remington, Yakima County Deputy Sheriff and P. G. Mitchell of the Walla Walla Bulletin accompanied Brotherton, and Frank Flarety of the Walla Walla and Ailyn Haug accompanied Yokum.

Willie Willis: Pop, what is a mortgage?  
Mr. Willis: Oh, it's something that comes with an automobile, my son.

**New Accessories Are Big Feature Of New Automobiles**

(By William Ullman)  
One must give the new accessories credit for the part they play in making the 1926 automobile a more efficient mechanism.

This is the conclusion one is certain to draw from even the most superficial inspection of the new cars now on display. Accessories are everywhere, and an unusually large percentage of them are brand new.

Ranging from devices that tell the driver when the tail light is out to electric fans to make the occupants of closed cars think nature has turned on the breeze in summer, accessories instantly capture the attention of the observing motorist. He sees in the new fittings and conveniences more than 50 per cent of the improvements credited to the new cars.

Filters are the big accessory story of the car and, likewise, the big news in improvements. There are oil filters, air filters and gasoline filters. Quite a number of cars have at least two of these filtering devices, while several boast of all three. When the automobile salesman speaks of long engine life, freedom from the carbon pest and uninterrupted performance he is speaking largely in terms of accessories.

Some of the car makers who emphasize the proportion of their products made in their own factories are going in rather strongly for accessories. Accessory manufacturers are specializing in a degree that makes it difficult for the car manufacturer to compete. Instead of carrying their ideas to the manufacturers of cars, inventors are developing their own companies and creating a general demand for their devices.

Accessory statistics include tire and parts sales and, therefore, are not an exact statement of the volume of business being done with regular accessories. The parts, tire and accessory business, however, reaches a billion and one-half dollars annually and regular accessories make up a good portion of this total. Stripped of its accessories the average automobile would have little attraction.

Among the strikingly new things to be seen along accessory row is the automatic air gauge. No more finding the right pressure for the tires by trial and error. With this new proposition the motorist is warned by a whistle when the proper pressure is reached. It is manufactured by the people who first conceived the idea of operating a spotlight through the windshield, and is typical of what the accessory people have up their sleeves.

Two companies are displaying devices intended to provide lubrication for the upper cylinder walls and valves without increasing carbonization, which would be the case if ordinary engine oil is allowed to leak past the piston rings. As a matter of fact, the special oil used by these devices is said to minimize carbon trouble by keeping carbon deposit so soft that it cannot cause pre-ignition. The theory of these devices is that by drawing through the special oil held in a container, enough lubrication in the cylinders will be provided to prevent cylinder wall wear and to keep the valves from sticking.

Much progress is displayed in carburetors and allied equipment. One proposition is a dual carburetor, said to produce remarkable results with certain makes of cars. One of the oldest carburetor manufacturers has just come out with a new model that incorporates a novelty. It is a miniature carburetor built into the main article, and designed to obviate the necessity for choking the carburetor in starting.

Placed as it is in the carburetor well, the fume plug does not interfere with the normal movement of the gas vapors through the intake manifold.

Anti-stall device is another one of the many interesting and significant products on the accessory counter. One of the most dreaded and hazardous of all motoring annoyances, the stalling engine, can now be avoided by the addition of such a device.

One of the fortunate features of the accessory display is that many of the improvements seen on the new cars can be purchased for older models, should the motorist feel that he wants to keep the old car another year without being out of date. A new manifold system is now available for a number of the popular makes of cars, including the Ford. Through better distribution of incoming gases this device makes possible an even flow of power greater power and elimination of carburetion problems which develop through faulty manifold design.

Car owners who look longingly at the new models with their simplified means of draining off the oil in the crankcase has made its appearance. Inserting the turning key in a special piece mounted on the instrument board does the trick.

While it is true that the adoption of the most practical type of oil recycler involves changes in engine design, nevertheless there is an oil recycler on the market which can be attached to any make of car. Where recylers are integral parts of the engine it is customary to pick the diluted oil off the piston rings through special suction tubes. In the arrangement offered for installation on cars in service oil is taken from the regular oil supply.

The advantages of boiling off the gasoline content in the oil are evident even if the oil is not so scientifically selected. Air cleaners have progressed to a point where the motorist is offered a wide selection. Certain advantages are claimed for each. In general, it may be said the tendency is to provide for the simplest possible installation with several makers emphasizing the non-mechanical nature of their products. One device provides for pre-heating the air, which is an important consideration for motorists who are shopping for air cleaners for older models.

A coincidental lock for those who are inclined to forget to lock their cars eliminates a common motor worry. When the engine is switched off of the car is locked, in the case of this new device. Another device that is likely to meet with immediate favor is a front compartment heater operating from a sort of stove attached to the exhaust manifold. This enables the driver to be as comfortable as the people on the rear seat who are warmed by the exhaust type of heater.

Anyone who gives due consideration to the accessory side of the automobile for 1926 must be impressed by its importance. The Oregon Motorist.

It is very important to keep brake lining free from all foreign matters, especially oil, grease, dirt, salt, resin, glycerine or brake compounds. When the lining is made, it is treated to give a quick stop without grabbing and with a soft application of the brake pedal. When brakes do not hold, an adjustment will overcome the difficulty. If brakes fail to hold without the entire weight of the body being thrown against the pedal, make adjustments. Make them at the wheel and not at the rods, for every time the rod is adjusted the leverage is changed and more pressure is required to stop the car.

Judge (sternly): And why had you been drinking?  
Motorist (meekly): Please, your honor, the doctor told me my blood was getting watery, and I put in a little alcohol to keep it from freezing.

**Constant Improvement**  
—has made this the world's Finest Low Priced Car

For year after year, Chevrolet engineers have been refining and improving Chevrolet's time-proved design. Examine the Improved Chevrolet and you will discover every engineering development essential to finer performance, smoother operation, more striking beauty and greater economy of operation and ownership. Quality features! Quality materials! Quality workmanship! Come in! Get a demonstration! So Smooth—So Powerful



- The Coach \$645
- Touring - \$510
  - Roadster - 510
  - Coupe - 645
  - Sedan - 735
  - Landau - 785
  - 1/2-Ton Truck \$395 (Chassis Only)
  - 1-Ton Truck \$550 (Chassis Only)
- All prices L. O. B. Flint, Mich. Small Down Payment Convenient Terms

**Blue Mountain Garage**  
M. A. HARRISON, Mgr. Opposite Postoffice.

**QUALITY AT LOW COST**

**Smartly Finished Fully Equipped**

Dodge Brothers Special Coupe is referred to as SPECIAL because it includes every item of special equipment that could possibly accentuate the car's beauty and comfort:

Balloon tires; nicked bumpers, front and rear; nickel-trimmed radiator shell; rear view mirror; automatic windshield wiper; scuff plates; cowl lights and natural wood wheels—disc wheels optional.

Hood and body smartly finished in tartan green lacquer, with cartouche yellow stripe; upper body in black lacquer, with glossy oven-baked enamel fenders and shields.

Genuine hand-buffed Spanish leather—grayish green; and wide-vision all steel safety pillars included among many other attractive features.

- Touring Car \$963
- Roadster \$958
- Coupe \$1015
- Sedan \$1077

Delivered  
See the Dodge Steel Body on Display in Our Showroom  
**L. C. SMITH**  
**DODGE BROTHERS**  
**MOTOR CARS**