

Golf Knickers

Fancy Pattern \$1.95

McGregor's Golf Hose \$1.75

All-wool, white with fancy top.

Westenhaver & Gilbert Store For Men

Wool Clips Moving Slowly in the West

SALT LAKE CITY, Utah, May 12 (AP)—Wool clips are not moving fast in the intermountain region, but sufficient transactions have been made during the past week to indicate that the British strike did not have the disastrous effect on the market that many forecast. Prices have continued to run from 30 to 35 cents, but the price uncertainty did have a slight influence in turning prices away from 35 cents to near the 30 cent point.

10 Years Ago Today--

Cars are daily being overhauled for the trip over the Blue Mountains to Pendleton.

IMPROVEMENT In roads and Ice Cream. Our new Frigidaire Fountains gives you superior service, and the Old Reliable

HAZELWOOD ICE CREAM Is the best in La Grande. Try a Special Brick.

L. & L. Drug Co. P. S.—Kids like "Dixies"—the most for a nickel. P. S. S.—For grownups, too.

STRAWBERRY PRICES CLIMB

PORTLAND, Ore., May 12. (AP)—Strawberry prices staged a comeback on the early growers market today after the almost disastrous deal Wednesday morning that carried values as low as \$1.60 a crate. Right from the opening, today's prices were firm growers holding Gold Dollars at \$2 to \$2.25 and Improved Oregon at \$2.50 to \$2.60. Prices climbed with the buying and the market was bare of supplies by 8 o'clock.

Buyers who came late, anticipating heavy receipts and lower prices were disappointed. Offerings, while liberal, were not in excess of local and shipping requirements. After the early deal was over the Portland berry growers' association put a price of \$2.75 on Gold Dollars and \$3.25 for Improved Oregon and late comers were glad enough to get fruit even at these levels. The bulk of today's receipts showed the effects of the hot weather. The berries were small and partly cooked but there was some quality offerings. Prices in the wholesale market ranged from \$2.75 to \$3.25 a crate.

PORTLAND, Ore., May 12. (AP)—Fresh egg market stronger with top grades and receipts both higher on the dairy exchange. Fresh standard extras advanced a cent to 28 cents and current receipts were boosted a half cent to 25 cents. Other grades were unchanged. Receipts were 1650 cases. Into the coolers movement amounted to 290 cases bringing the total storage up to 35,225 cases.

The local butter market is steady and unchanged although weakness is visible in the undertone. A brisk outside demand from the south together with storage activities is keeping the heavy receipts cleaned up.

Live poultry market generally steady although liberal receipts of broilers are causing an easier feeling on springs. Leghorn springs bid at 22 to 25 cents. Hens holding at 26 to 28 cents.

Portland millers have announced an advance of \$1 in millrun and middlings effective at once. New prices: Millrun \$29 and middlings \$44 a ton.

PORTLAND LIVESTOCK PORTLAND, Ore., May 12. (AP)—Cattle slow; 10 cars Montana steers bearing market; receipts 210. Hogs steady; receipts 175. Sheep steady; receipts 320.

PORTLAND PRODUCE PORTLAND, Ore., May 12. (AP)—Eggs half to 1c higher. Current receipts 24c; fresh medium 23c; fresh standard firsts 25c; fresh standard extras 26c. Butter steady. Extra cubes, city 33 1/2c; standard 32 1/2c; prime firsts 31 1/2c; firsts 30c; prints 41c; cartons 42c.

Milk steady. Best churning cream 30c per pound net shippers' track in zone 1. Cream delivered Portland 41c per pound. Raw milk (4 per cent) \$2.20 cwt. f.o.b. Portland.

Poultry steady. Broilers—earlier. Heavy hens 27-28c; light 25-26c; young broilers, heavy 25-26c; young ducks 28-30c; dressed turkeys nominal. Potatoes, slow, weak \$2.25-9 \$2.35. Onions nominal, old crop about gone, \$1.75-9 \$2.

Market News of the Day

CHICAGO GRAIN Wheat: Open High Low Close May, new... 160 161 159 160 1/2 May, old... 160 158 159 1/2 July... 156 157 156 156 1/2 Sept... 153 153 152 152 1/2

Wheat Market Rallies Slightly During Day CHICAGO, May 12. (AP)—Although wheat prices averaged lower today indications that foreigners are taking more interest in American new crop wheat helped to rally the wheat market from early declines. Argentine shipments to Europe were less than had been estimated, and world shipments promised to be small. Special notice was also taken of a forecast that the Missouri wheat harvest this season will be the smallest in fifty years, excepting 1899 and will total only 14,000,000 bushels.

PORTLAND WHEAT PORTLAND, Ore., May 12. (AP)—Wheat: BBB hard white \$1.32; hard white, B. R. Bant \$1.28; hard white Federation \$1.37; soft white \$1.46; western white \$1.46; hard winter \$1.37; northern spring \$1.38; western red \$1.33. Today's car receipts: Wheat 30; flour 3; corn 2; oats 3; hay 2.

LIVERPOOL WHEAT LIVERPOOL, May 12. (AP)—Close wheat 1 1/2 to 2 1/4 lower; May 11s 10d; July 11s 6d; October 10s 7 1/2d.

CHICAGO CASH CHICAGO, May 12. (AP)—Cash: Wheat—No. 1 hard \$1.63 1/2; No. 2 hard \$1.66 1/2; No. 2 North \$1.69 1/2. Corn—No. 2 mixed 75c; No. 2 yellow 73 1/2c; No. 2 white 74c. Oats—No. 2 white 42 1/2c; No. 2 white 41 1/2c; No. 2 white 41 1/2c. Rice—Not quoted. Berley—\$6 1/2c. Timothy seed—\$6 1/2c. Clover seed—\$2 1/2c. Hurd—\$1.25. Illinois—\$17.50. Bellies—\$11.

CHICAGO, May 12. (AP)—Wheat prices took an early downward course today, influenced by reports of greatly improved crop conditions northwest and by dearth of demand as well as by weakness at Liverpool. The wheat opening here 3/4 cent off to 1/2 up was followed by a decline of about two cents in some cases.

CHICAGO LIVESTOCK CHICAGO, May 12. (AP)—U. S. Department of Agriculture—Hogs 25,000, steady to the higher; mostly strong; medium and heavy weight butchers slow advance; big packers inactive; bulk 240 to 260 lb. butchers \$13.10-13.45; majority of good and choice 200 to 225 lb. averages \$12.50-13.70; bulk desirable 180 lbs. down \$12.75-14; top one 150 to 160 lbs. \$14. Cattle 12,000; fed steer trade less active than early; mostly steady; stock sharing slow; mostly 18 to 12c lower; steers \$10.25; choice yearling steers practically absent; load of light heifers \$9.75; several strings at \$9.50-9.85; few heavy Holsteins above \$6.65; vealers around 25c higher bulk to packers \$9.25-9.50; outsiders upward to \$12.25.

Reclamation Payments Suspension Favored WASHINGTON, May 12. (AP)—A resolution providing for the temporary suspension of payments of between twenty-three and twenty-eight million dollars due the government from settlers on 19 irrigation projects, was approved by the senate public lands committee yesterday. The resolution originated in the house.

Sheep 14,000; opening sales on California lambs and yearlings steady; nothing done on fat clipped lambs; no wool lambs here; three cars good to choice California springers \$16.80; around 125 cut; four cars at same price with a smaller sort; shipped California lambs and yearlings \$12.75; average 95 pounds; few strictly choice handwring California ewes without fleece \$7.75; steady; wool ewes and heavy clipped ewes mostly 5c lower; odd lots of fat wool ewes \$7.50-8.25; choice heavy clipped ewes \$6.50.

Reclamation Payments Suspension Favored WASHINGTON, May 12. (AP)—The measure would adjust the charges due on construction and other expenses for projects in the west and southwest round to contain considerable acreage which is temporarily unproductive.

FRISCO BUTTERFEAT SAN FRANCISCO, May 12. (AP)—Butterfat f.o.b. San Francisco 42 1/2 cents.

Lieut. Oakley Kelly Visits in Pendleton PENDLETON, May 12. (AP)—The history of flying was told and exhibited in Pendleton last night by Lieut. Oakley Kelly, who flew here late yesterday with Major G. W. C. Whiting from Vancouver in the interests of the reserve officers' association. Lieut. Kelly left Vancouver at four o'clock and arrived here at six. He left this morning at 9 o'clock on the return trip.

BEAR DRIVE FEATURE OF TODAY'S TRADINGS NEW YORK, May 12. (AP)—A sensational bear drive against Nash Motors in an unsuccessful effort to force that stock below 152 a share featured today's stock market. The general list maintained a firm undertone with trading again lapsing into dullness pending further light on the trend of the domestic business.

LIOT IN LOS ANGELES LOS ANGELES—One death and three prostrations were attributed to the heat yesterday when the mercury climbed to 58.

COMING TO PENDLETON AND BAKER DR. MELLENTHIN Specialist

Will Be in PENDLETON on Tuesday, May 18, at the Dorion Hotel, and in BAKER on Wednesday and Thursday, May 19 and 20, at the Geiser Grand Hotel.

Office Hours: 10 a. m. to 1 p. m. One Day in Pendleton and Two Days Only in Baker.

NO CHARGE FOR CONSULTATION

Dr. Mellenthin is a regular graduate in medicine and surgery and is licensed by the state of Oregon. He does not operate for chronic appendicitis, gall stones, ulcers of stomach, tonsils or adenoids.

He has to his credit wonderful results in diseases of the stomach, liver, bowels, blood, skin, nerves, heart, kidney, bladder, bed-wetting, catarrh, weak lungs, rheumatism, sciatica, leg ulcers and rectal ailments.

Below are the names of a few of his many satisfied patients in Oregon:

Mrs. W. J. Martin, Moro, high blood pressure. Mrs. Peter Westburg, Colton, stomach trouble. Mrs. Hattie Nelson, Chinook, Wash., gonorrhea. Martin Jorgenson, Astoria, nerve trouble. Mrs. Chris Hanson, Chinook, Wash., bowel trouble and neuritis. Mrs. James Ellis, Coquille, gall stones and colitis. James Suen, Lakeside, ulcers of stomach. J. R. Jenkins, Silverton, circulatory trouble. Remember the above date, that consultation on this trip will be free and that his treatment is different. Married women must be accompanied by their husbands. Address: 211 Broadway Bldg., Los Angeles, California.

PROVIDED FOR CASKET SPOKANE—A metallic casket with a glass lid, placed in a marble vault situated to let the sun shine on his face and to cost \$6,000 was one of the provisions of the will of Anton Henry Albert, 72.

NEW YORK, May 12. (AP)—U. S. dollars and thirty-seconds of dollars, bonds: (Sales in \$1000) High Low Close Liberty 2 1/2% A 157 106.25 106.25 106.25 Liberty 1 1/2% B 10 106.24 106.20 106.25 Liberty 2d 4 1/2% C 102 106.28 106.26 106.25 Liberty 2d 4 1/2% F 54 101.12 102.9 Liberty 4th 4 1/2% G 214 102.3 102.5 U. S. Treasury Dept. 2 1/2% 158 101.14 101.11 101.13 U. S. Treasury Dept. 4 1/2% 12 104.12 104.10 104.12 U. S. Treasury Dept. 4 1/2% 8 108.15 108.10 108.15

FIND IT HERE

Copy for this column must be in by 9:00 a. m.

Card of Thanks We wish to express our heartfelt thanks to the kind friends who assisted during our recent bereavement.

W. D. Shafer and daughter, Mrs. Florence B. Carpenter and family.

THAT'S-THAT'S-THAT'S SPECIAL 98 cts. At Richardson's Art & Gift Shop, 5-13-11

FOOT SPECIALISTS Cox & Pearson, West-Jacobson Bldg., R. 15. 5-11-51p

FOR GRADUATION Hundreds of beautiful and useful articles all suitable as Gifts for the Boy and Girl Graduate. See them at Richardson's Art & Gift Shop. 5-13-11

Plants of all kinds now on sale at Hoover, Tomatoes, Cabbage, Cauliflower, Asparagus, Parsnips, Verbena, Cosmos, Lobelia, Sweet Peas, Zinnias, Marigolds, Carnations, and many more. Come in and ask for what you want. Wilson's. 5-11-11

A new set of pretty bath caps. See them at Silverthorn-Wright's family drug store. 5-7-11

WHEN IN DOUBT have Richardson, "The Art Man," help you to select a suitable gift for the graduate. Gifts for every occasion always at Richardson's Art & Gift Shop. 5-13-11

School Funds now available for farm loans in Union County. See H. E. Dixon, Foley Building, La Grande, Ore. 2-16-11

Tasty, home-cooked lunches prepared for motor parties. Phone 553-M. 5-13-11p

Remitting, pieating, button holes, etc. Noxon's Kinky Shop. 10-14-11

New arrivals of Wallpaper every week. Ask us about prices. Bugg Paint Co. 5-10-11

That new prescription for the nerves that puts pep into you, that makes you feel equal for all occasions, gives you an appetite, it acts directly upon the nerves—for \$1.00 a bottle sold only by Silverthorn-Wright's family drug store. 5-7-11

Sweet Potato Plants Let me book your order for later delivery. Homer Wilson. 5-13-21

Runyuan Signs, Main 645. 5-8-11

BOXWOOD. Large load boxwood delivered in La Grande, \$6.00. Call L. B. Menefee Lbr. Co., Lone Tree. 4-3-11

Germinator and dandruff eradicator. Stops dandruff in short order and stops hair from falling out. Sold for \$1.00 a bottle. Sold only by Silverthorn-Wright's family drug store. 5-7-11

Wall paper you will like. Bugg Paint Co. 5-13-31

Runyuan Signs, Main 645. 5-8-11

CALL FOR BIDS Sewer Improvement. Sealed bids will be received by the City Commission of the City of La Grande, Oregon, for the construction of the improvement in Sewer Improvement District Number 2-6, within the city of La Grande, Oregon, according to the plans and specifications of the said sewer improvement district now on file in the office of the City Recorder of said city. A deposit of \$5 will be required for set of plans and specifications which amount will be refunded if bidder is unsuccessful and returns same to this office.

Bids will be received to the hour of 7:30 p. m., May 19, 1926, at the commission room in the city building at La Grande, Oregon, and must be accompanied by a certified check in the sum of 50 per cent of the amount bid as a guarantee of the acceptance and completion of contract if awarded. Checks will be returned to unsuccessful bidders. The commission reserves the right to reject any and all bids. By order of the commission May 6th, 1926.

J. E. STEARNS, Recorder of the City of La Grande, Oregon. 5-7-10-11

NOTICE OF LETTING Inviting Proposals for Concession at Emigrant Park. Sealed bids will be received by the Oregon State Highway Commission in Room 260, Multnomah County Court House, Portland, Oregon at 10:00 o'clock A. M., May 25, 1926, for the privilege of operating a lunch room and confectionery at Emigrant Park on the Old Oregon Trail in Umatilla County, about 25 miles southeast of Pendleton, for the period, June 1st, 1926 to December 31st, 1926. Proposal blanks and full information for bidders may be obtained at the office of the State Highway Commission, Capitol Building, Salem, Oregon.

ROBBER CAMP RAIDED T. U. L. A. B. E., Cal.—A "robber camp" in the wilds of the Tuolumne Indian reservation containing a stolen shotgun, numerous knives, several months provisions and a stolen automobile was raided and three boys, all under 21, and two girls found with them were taken into custody.

The federal farm loan board has met credit requirements of agriculture to the amount of more than two billion dollars since its establishment, according to its annual report.

PLAN AGAIN IN HEADLINES—SAN FRANCISCO—Eugene O'Neill's play "Desire Under the Elms" again became involved when the state labor commission swore out a warrant for arrest of Dean Worley, theater manager, charging him with violation of the state child labor law in employing a 15-year-old girl in the cast now playing here.

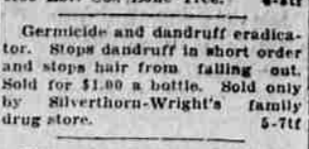
New York's entire population of early Colonial days could easily be contained in almost any present-day Manhattan skyscraper.

NOTICE TO CREDITORS. Notice is hereby given that the undersigned has been appointed by the County Court of Union County, Oregon, administrator of the estate of Frank I. Staveley, deceased, and all persons having claims against said estate are required to present the same, together with proper vouchers, to said administrator at the law offices of Ringo & Wright, West-Jacobson building, La Grande, Oregon, within six months from the date hereof.

Dated this 29th day of April, 1926. OLIVER DARCH, Administrator of the estate of Frank I. Staveley, deceased. Apr. 29—May 6-13-26-27.

Let kiddies romp in our practical Play Suits. Made of strong blue striped stiff drill with white stripe; khaki drill or blue denim; red or blue trimmed. Unusually good values at the above low price range.

79c to \$1.10



Let kiddies romp in our practical Play Suits. Made of strong blue striped stiff drill with white stripe; khaki drill or blue denim; red or blue trimmed. Unusually good values at the above low price range.

Let kiddies romp in our practical Play Suits. Made of strong blue striped stiff drill with white stripe; khaki drill or blue denim; red or blue trimmed. Unusually good values at the above low price range.

Let kiddies romp in our practical Play Suits. Made of strong blue striped stiff drill with white stripe; khaki drill or blue denim; red or blue trimmed. Unusually good values at the above low price range.

Let kiddies romp in our practical Play Suits. Made of strong blue striped stiff drill with white stripe; khaki drill or blue denim; red or blue trimmed. Unusually good values at the above low price range.

Let kiddies romp in our practical Play Suits. Made of strong blue striped stiff drill with white stripe; khaki drill or blue denim; red or blue trimmed. Unusually good values at the above low price range.

Let kiddies romp in our practical Play Suits. Made of strong blue striped stiff drill with white stripe; khaki drill or blue denim; red or blue trimmed. Unusually good values at the above low price range.

Let kiddies romp in our practical Play Suits. Made of strong blue striped stiff drill with white stripe; khaki drill or blue denim; red or blue trimmed. Unusually good values at the above low price range.

Let kiddies romp in our practical Play Suits. Made of strong blue striped stiff drill with white stripe; khaki drill or blue denim; red or blue trimmed. Unusually good values at the above low price range.

Let kiddies romp in our practical Play Suits. Made of strong blue striped stiff drill with white stripe; khaki drill or blue denim; red or blue trimmed. Unusually good values at the above low price range.

Let kiddies romp in our practical Play Suits. Made of strong blue striped stiff drill with white stripe; khaki drill or blue denim; red or blue trimmed. Unusually good values at the above low price range.

Let kiddies romp in our practical Play Suits. Made of strong blue striped stiff drill with white stripe; khaki drill or blue denim; red or blue trimmed. Unusually good values at the above low price range.

Let kiddies romp in our practical Play Suits. Made of strong blue striped stiff drill with white stripe; khaki drill or blue denim; red or blue trimmed. Unusually good values at the above low price range.

Let kiddies romp in our practical Play Suits. Made of strong blue striped stiff drill with white stripe; khaki drill or blue denim; red or blue trimmed. Unusually good values at the above low price range.

Let kiddies romp in our practical Play Suits. Made of strong blue striped stiff drill with white stripe; khaki drill or blue denim; red or blue trimmed. Unusually good values at the above low price range.

Let kiddies romp in our practical Play Suits. Made of strong blue striped stiff drill with white stripe; khaki drill or blue denim; red or blue trimmed. Unusually good values at the above low price range.

Let kiddies romp in our practical Play Suits. Made of strong blue striped stiff drill with white stripe; khaki drill or blue denim; red or blue trimmed. Unusually good values at the above low price range.

Let kiddies romp in our practical Play Suits. Made of strong blue striped stiff drill with white stripe; khaki drill or blue denim; red or blue trimmed. Unusually good values at the above low price range.

Let kiddies romp in our practical Play Suits. Made of strong blue striped stiff drill with white stripe; khaki drill or blue denim; red or blue trimmed. Unusually good values at the above low price range.

Let kiddies romp in our practical Play Suits. Made of strong blue striped stiff drill with white stripe; khaki drill or blue denim; red or blue trimmed. Unusually good values at the above low price range.

Let kiddies romp in our practical Play Suits. Made of strong blue striped stiff drill with white stripe; khaki drill or blue denim; red or blue trimmed. Unusually good values at the above low price range.

Let kiddies romp in our practical Play Suits. Made of strong blue striped stiff drill with white stripe; khaki drill or blue denim; red or blue trimmed. Unusually good values at the above low price range.

Let kiddies romp in our practical Play Suits. Made of strong blue striped stiff drill with white stripe; khaki drill or blue denim; red or blue trimmed. Unusually good values at the above low price range.

Let kiddies romp in our practical Play Suits. Made of strong blue striped stiff drill with white stripe; khaki drill or blue denim; red or blue trimmed. Unusually good values at the above low price range.

Let kiddies romp in our practical Play Suits. Made of strong blue striped stiff drill with white stripe; khaki drill or blue denim; red or blue trimmed. Unusually good values at the above low price range.

Let kiddies romp in our practical Play Suits. Made of strong blue striped stiff drill with white stripe; khaki drill or blue denim; red or blue trimmed. Unusually good values at the above low price range.

Let kiddies romp in our practical Play Suits. Made of strong blue striped stiff drill with white stripe; khaki drill or blue denim; red or blue trimmed. Unusually good values at the above low price range.

Let kiddies romp in our practical Play Suits. Made of strong blue striped stiff drill with white stripe; khaki drill or blue denim; red or blue trimmed. Unusually good values at the above low price range.

SHERRY'S

TONIGHT ONLY

ROBERT McKIM in

"North of Nome"

A Wonderful Drama Of The Yukon

George Edward Lewis, the producer, will appear in person with his two famous wolf dogs, "Nome" and "Kobuck."

Comedy, "Movie Idol"

A Hardware Stock Known For Its Completeness

The name "Bohnenkamp" has been inseparably linked with the hardware business in Eastern Oregon for two generations. Starting in the days when La Grande was an insignificant town, the W. H. Bohnenkamp Co. became the leading hardware establishment of the valley and has kept steadily abreast of the community's growth.

Since its earliest years, the store has been recognized for its superior service and for the completeness of its hardware stock. Now it is recognized throughout Union and Wallowa counties as the store that can be depended on regardless of what is wanted in hardware or implements.

But we are not satisfied only with a large stock. Equally important has been the quality of the stock offered and we have carried for twelve to twenty-five years the best lines that are manufactured anywhere in the country—nationally advertised brands of unquestioned quality.

Goodyear Tires, Monarch Ranges, Western Ammunition, Meyer's Pumps, Howard Heaters, O. U. B. Tools, International Harvesters, Primrose Separators, Lowe Bros. Paints—these are a few of the brands on which we have built our reputation for superior quality and unusual service. When you need anything in the hardware line, it is satisfying to know that you can get prompt and adequate attention at Bohnenkamp's.

W. H. Bohnenkamp Co.

"Superior Hardware—You Can Get It At Bohnenkamp's"