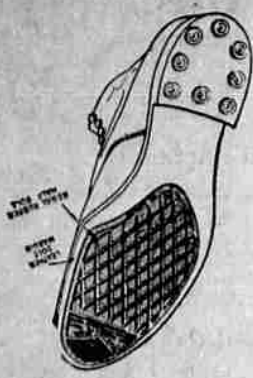


SERTON RUBBER SOLES



75c

You can put them on easily, quickly, without tools, nails or stitching.

Westenhaver & Gilbert Store For Men

CHEESE DOWN THREE CENTS

PORTLAND, Apr. 7. (AP)—Following several days of price cutting with a weak and unsettled tone generally throughout the local jobbing territory, the cheese market declined three cents a pound today.

Effective at once Tillamook triplets are quoted at 25 cents and loaf 26 cents f.o.b. Tillamook.

The resale prices cut the margin of profit for the jobbers approximately one-half cent a pound, but at a recent meeting attended by most of the local dealers it was agreed to accept the new schedule and to abide by them, thus eliminating all price cutting in this territory and at the same time establishing a definite market.

The new prices on Melowest cheese range one cent below Tillamook, while other Oregon makes not so well advertised, range from two to four cents under Tillamook.

The fresh egg market is weak and lower. In the dairy exchange all grades but medium declined one cent. Extras now posted at 25 cents, firsts and mediums 23 cents and current receipts 22 cents.

Butter remains steady and unchanged with the local market apparently marking time. Receipts of country cubes yesterday amounted to 12,901 pounds with 21,132 pounds manufactured by local creameries.

PORTLAND PRODUCE. PORTLAND, Ore., Apr. 7. (AP)—Eggs in lower. Current receipts 21c; fresh mediums 21c; fresh standard firsts 22c; fresh standard extras 23c.

Butter unchanged. Extra cubes, city 25 1/2c; standards 25 1/2c; prime firsts 25c; firsts 27c; prints 42c; cartons 44c.

Milk steady. Best charging cream 41c net shippers' track in Zone 1. Cream delivered Portland 43c. Raw milk (4 per cent) \$2.35 cwt. f.o.b. Portland.

Poultry steady. Heavy hens 24 1/2c; light 23c; broilers 35 1/2c; young white ducks 28c; do dressed nominal; dressed turkeys 47 1/2c; 1/2 live nominal; geese dressed 28 1/2c; capons nominal.

Potatoes steady \$2.75 @ \$3.25. Onions quiet \$1.75 @ \$2.

Market News of the Day

CHICAGO GRAIN. Wheat: Open High Low Close. May, new... 157 1/2 158 1/2 156 1/2 157 3/4. July, old... 156 1/2 157 1/2 155 1/2 157. Sept... 155 1/2 156 1/2 154 1/2 157.

PORTLAND WHEAT. PORTLAND, Ore., Apr. 7. (AP)—Wheat: BBL hard white \$1.47; hard white, bluestem, Baart \$1.46; soft white \$1.48; western white \$1.49; hard winter \$1.41; northern spring \$1.43; western red \$1.40.

LIVERPOOL WHEAT. LIVERPOOL, Apr. 7. (AP)—Close wheat, 1/4 to 1/2 d lower; May 11s 2 1/4; July 11s 1 1/4; October 10s 6d.

CHICAGO CASH. CHICAGO, Apr. 7. (AP)—Cash: Wheat, No. 2 hard \$1.59 1/2 @ \$1.62 1/2. Corn, No. 3 mixed 67 1/2 @ No. 3 yellow 68 1/2 @ 69 1/2. Oats, No. 2 white 42 1/2 @ 42 3/4; No. 3 white 41 1/2 @ 42 1/2. Rye: No sales. Barley 68 1/2 @ 71c. Timothy seed \$6 @ \$7. Clover seed \$28 @ \$32. Lard \$12.77. Hibs \$14.50. Bellies \$14.87.

CUCUMBERS PUT ON LOCAL RETAIL MARKETS TODAY

Walla Walla asparagus displaced Oregon grown asparagus on the La Grande retail market today at a price of 20 cents a pound. California head lettuce is now quoted at 15 cents a head, spinach two pounds for 25 cents, hot house radishes two bunches for 15 cents, celery hearts 33 cents a bunch and rhubarb 10 cents a pound.

Cucumbers made their first appearance here today, selling at 40 cents each.

LA GRANDE WHOLESALE MARKETS. Poultry (live weight). Heavy hens—25c lb. Medium hens—15c lb. Light hens—14c lb. Stags—8c lb. No. 1 live turkeys—32c lb. Flour. Hard Federation (hard wheat)—\$7.80 bbl. Soft wheat—\$7.50 bbl.

LA GRANDE RETAIL MARKETS. Poultry. Hens—30c lb. Meats and Fish. Beef—10 1/2 @ 12 1/2 c lb. Chops and steaks—25c lb. Salmon (fresh)—25c lb. Halibut—55c lb. Dairy. Butter, Creamery—47c lb.; 90c roll. Eggs—26 1/2 @ 28c doz. Cheese—40c lb. Honey, comb—30c lb. Vegetables. Potatoes—5c lb. (small quantities); \$4.40 for 100-lb. lot. California green peas—25c lb. Walla Walla asparagus—20c lb. Carrots—2 bunches for 25c. Celery—30c bunch. Parsley—10c bunch. Beans—15c bunch. Green peppers—50c lb. New cabbage—8c lb. Turnips—10c bunch. Yellow onions—4c lb. for 25c. Cantiflower—5 1/2 c lb. Hot house lettuce—25c lb. California head lettuce—15c. Spinach—2 lbs. for 25c. Hot house radishes—2 bunches for 15c. Celery hearts—33c bunch. Green onions—10c bunch, 3 for 25c. Hot house tomatoes—40c lb. Cucumbers—40c each.

Fruits. Strawberries—40c box. Blueberries—10c lb. Apples—6 lbs. for 25c. Lemons—45c doz. Oranges—60 to 87c doz. Grape fruit—2 for 35c. Sugar. Cane sugar—35 1/2 c for 100 lbs. Gasoline. Gasoline, regular, retail—27c gal. Gasoline, high test, retail—36c gal.

CHICAGO LIVESTOCK. CHICAGO, Apr. 7. (U. S. Department of Agriculture)—Hogs 12,000; fairly active; fully steady with Tuesday's last time of 10 to 20¢ higher than classes 100 to 140 pound kind \$12.50; bulk desirable 150 to 200 pound averages \$12.80 to \$13.10.

Cattle 7,000; fat steers trade uneven; mostly steady with Tuesday's decline; few yearlings to shippers strong; spots a shade higher on light weight heifers; few early sales of fat steers all weights \$9.75 to \$10.25; latter price paid for 600 pound heifers; she stock strong; bulls 10 to 15¢ higher; two way market on western; most light calves to packers \$9 @ \$9.25; choice selections upward to \$10; low at \$10.50.

Sheep 11,000 fat lambs fairly active; early sales steady to strong; few wooled native lambs \$12.25; desirable weights clipped lambs \$11 @ \$11.25; best ewes held around \$11.75; practically no showing lambs on sale; few fat sheep steady; clipped light wethers \$9; heavy clipped aged wethers \$8; odd lots of fat wool ewes upward to \$9.25.

NEW YORK, Apr. 7. (AP)—U. S. BONDS. (Sales in \$1000). Liberty 2 1/2 A 50 100.25 100.25 100.25. Liberty 2 1/2 B 50 100.25 100.25 100.25. Liberty 1 1/2 A 50 102.10 102.4 102.5. Liberty 2 1/2 C 50 100.25 100.25 100.25. Liberty 2 1/2 D 50 101.5 101.6 101.7. Liberty 4 1/2 A 50 102.25 102.25 102.25. U. S. Treasury Dept. 4 50 102.25 102.25 102.25. U. S. Treasury Dept. 3 1/2 50 102.17

STOCK PRICES BECOME WEAKER BEFORE CLOSE

NEW YORK, Apr. 7. (By the Associated Press)—Stock prices, which have been moving steadily upward in quiet trading for the past week, began to turn soft this afternoon when weakness developed in some of the popular industrial stocks. Hudson Motors, General Electric and American Can bore the brunt of the selling, concluding their early gains and sagging a point or more below yesterday's closing quotations.

Resumption of construction operations in several sections of the list were noted during the morning. The increase in crude oil production last week had a restraining influence on the oil shares and sugars were heavy in sympathy with lower commodity prices. Several of the independent steels, notably Old Steel preferred, Midland Steel products preferred and Vandalia, recorded extreme gains of two to nearly four points in the early trading, although the weekly steel trade reviews reported a further softening of pig iron prices now the lowest since last October.

The closing was irregular. Profit taking continued through the final dealings as buying power began to show signs of exhaustion. Indications of scattered short selling also were present.

Wheat Market Rallies After Selling Ceases

CHICAGO, Apr. 7. (AP)—Aggressive selling by houses with eastern connections led to numerous setbacks in wheat today, but the market rallied as soon as selling ceased. The selling appeared to be of a speculative sort with a view to replacement through purchases at declines. Export demand was slow, but the world's available wheat supply decreased 5,982,000 bushels for the week, and there was some apprehension over alternate freezing and thawing weather.

Wheat closed unsettled at the same as yesterday's finish to 1/2¢ higher. CHICAGO, Apr. 7. (AP)—Opening wheat prices, unchanged to 1/2¢ higher; May, new \$1.57 1/2 to \$1.58 1/2 and July \$1.25 1/2 to \$1.26, were followed by something of a lag, and then by a moderate fresh upturn.

POWER COMPANY REPORTS. SAN FRANCISCO, Apr. 7. (AP)—Development of the California-Oregon Power company went forward in a satisfactory manner during 1925. Paul B. McKee, vice president, said in making public the annual report of the company. Gross earnings from power sales increased \$160,929.87 over the year previous, a gain of 25 per cent. The gross earnings were \$2,167,989 in 1925. Assets of the company increased from \$19,747,681 to \$22,250,166.99. The surplus advanced from \$338,425 to \$542,257. The dividend provision reserve moved to \$1,582,926 from \$1,298,178. The generated kilowatt capacity totaled 246,749,998 hours in 1925 as against 176,778,068 in 1924.

FRISCO POULTRY. SAN FRANCISCO, Apr. 7. (AP)—(U. S. Bureau Agricultural Economics)—Leghorn hens were slightly weaker today under lighter demand. The movement of other classes of poultry was slow due to unsatisfactory weather. Leghorn hens: 2 1/2 lbs. 25c per pound; 3 pounds 26c; 3 1/2 to 5 1/2 pounds 27c per pound. Large colored hens: Ranch 32 1/2 @ 35c per pound; eastern 24 @ 25c per pound.

APPLES. SAN FRANCISCO, Apr. 7. (AP)—Federal State Market News Service—Apples were showing a slightly stronger tone. Apples: Sales from storage, California, Newtons, fancy 4-lb. \$1.75 @ \$2.15; 2 1/2 lb. \$2.50 @ \$2.25; Oregon and Washington—Spitzenburgs, extra fancy \$2.50 @ \$2.75; fancy \$2.30 @ \$2.50; Winesaps and Arkansas Blacks, extra fancy \$2.40 @ \$2.50; fancy \$1.75 @ \$2; Newtowns, fancy \$2.30 @ \$2.50; C grade \$1.50 @ \$1.80.

PORTLAND LIVESTOCK. PORTLAND, Ore., Apr. 7. (AP)—Cattle nominally steady. No receipts. Cows extremely weak; receipts 750 direct. Medium weights 1200 to 250 lbs; common, medium, good and choice \$12.25 @ \$12.75; light weight (160 to 200 lbs) common, medium, good and choice \$12.45 @ \$14. Sheep active. Receipts 710 (200 through). Lambs, medium to choice, 57 pounds down \$11 @ \$12; lambs, spring, medium to choice \$12.50 @ \$14.50.

FRISCO BUTTERFAT. SAN FRANCISCO, Apr. 7. (AP)—Butterfat, Loh, San Francisco 41 cents. Tires can be easily destroyed by turning the front wheel while the car is standing still. Damage which always results from this practice may be avoided by moving the car when turning the wheels.

FIND IT HERE. Copy for this column must be in by 9:00 a. m.

World's Largest Chain Department Store Organization. J.C. Penney Co. A NATION-WIDE INSTITUTION. DEPARTMENT STORES. 108 Depot St., La Grande, Ore. Reliable Quality Goods Always At Lowest Prices

Now You Can Buy More of Those Famous House Frocks!

Of Nation-Wide Fame are our House Frocks! Thousands upon thousands of women throughout this land acclaim them as economical, practical and attractive! This is to announce a new shipment of them!



The materials of these House Frocks are different—they're the new gingham patterns and the popular prints. Trimmings are novel and appealing. See Our Window

LOOK OVER OUR WANT ADS FOR BARGAINS

Here's the Amusement Treat of the Year Get Tickets Now

The Time, The Place and The Girl

A Rollicking Musical Show Filled with Fun, Girls, Music and Dancing! Direction of John Britts, of Portland, and Mrs. J. A. Hoskins, of Baker, Assisted by H. E. Coolidge, Earl Stoddard and J. D. Hollingsworth

Arcade Theatre, Thursday and Friday Nights

A Cast of 60 People—A Beautiful Singing Chorus of 45 The Choice Musical and Dramatic Talent of the City! Haunting Melodies—A Riot of Comedy—Special Dance Features Brilliant Costumes and Scene Effects

Most elaborate home-talent production in the city's history

SEATS NOW ON SALE

Glass Drug Store Reserved Seats, \$1.00; Balcony unreserved, 75c—Come Early! Don't Miss It Plan To See It

Natural Law

Natural Law is at work today as it always has been. The only difference that time brings is the discovery of more efficient means of giving this law greater vent to exert itself. Nature's law has been hindered in its efforts to give to the world what it has, in many ways. Greater study has been given in the past twenty-five years to all lines of endeavor than in all the history of the world before—nature's laws being discovered and released.

Not the least of these discoveries is the discovery of releasing Nature's forces in the human body. Impingements of the bony structure of the body has done more to keep the human family from health and happiness than all other agencies. As Nature's forces are being released in all other lines of progress, so Nature's forces are being released in the human body. The new modern health science—CHIRO-PRACTIC is here and is doing for the sick what all the other health sciences have failed to do. Health is being restored to bodies that were heretofore considered incurable. We say if you are interested in a healthy body and mind for yourself and family, investigate.

F. L. TRIBE, D. C. Ph. C. PHONE 126-W (Palmer Graduate) New Foley Bldg. Office Hours: 9 to 5; 7 to 8

S.H.E.R.R.Y.'S TONIGHT ONLY

The White Panther

with REX (SNOWY) BAKER And a splendid cast including Boomerang The wonder horse. Comedy—All Out