

Tourist and Traffic News

# AUTOMOBILE NEWS

Highway and Auto Dope

## EAST OREGON FAVORS ROAD

VALE (Special)—Representatives from Malheur, Deschutes and Harney counties met in Burns the first of the week, completed organization of the Central Oregon Highway association.

"We do not want a local improvement from Bend to Burns, but a highway straight through from Vale to Bend and so on across the state." This was the prevailing sentiment at the meeting, and particularly of the Deschutes county delegation.

The four delegates present from Malheur county were: J. D. Johnson, Dan Gallagher, J. J. Purvis, Percy Purvis, who was selected as delegate of the Vale Commercial club and E. A. Prater, representing the Ontario Commercial club.

The principal delegates from Deschutes county were Senator Jay H. Upton, H. H. Beaumont and Ralph Hamilton.

**New Officers Elected.** At the first meeting, after an integral discussion, a draft of organization was made. A representative was chosen from each county to draw plans for organization.

At the second meeting organization was completed and officers elected. Acoble McGowan, Burns, is the new president; Jay H. Upton, Bend, vice president for Deschutes county; J. D. Johnson, Harper, vice president for Malheur county. Vice presidents for Lake and Lake counties will be elected by their respective boards of trade.

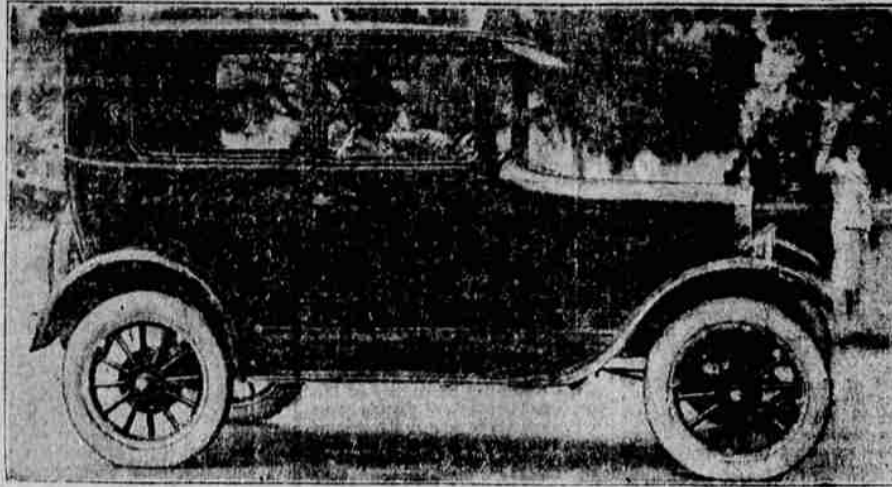
Management of the association is vested in three directors from each county, one of whom is to be the vice president. The directors for Malheur are Dan Gallagher, Johnson, and George K. Alken, Ontario.

### Need of Road Seen.

It was shown by the official report of the Oregon road department officials at Ashland that last summer there was a daily average of 247 motorists who registered and inquired if there was not some way by which they could come through Central Oregon en route to Spokane and the park, without going by way of Portland and the Columbia River highway. All of them had to be told there was no road.

All the county courts and other boards from Eugene to Snake river are joining in a campaign for the immediate survey of the Central Oregon highway. Every speaker from Deschutes wanted a through road from Vale to Bend on across the state. If they could not get this, they declared they were not interested in the project. It was unanimously agreed that a representation from each county go before the state highway commission to push the project as rapidly as possible. Plans are already underway for the meeting before the commission.

## Ford Tudor Sedan



Finished in a channel green, the improved Ford Tudor sedan has a distinctive and pleasing appearance. It is a most convenient car for family use. Upholstery and interior fittings of attractive, and seats, which are low, are deeply cushioned.

## CLIMB WON BY AMERICAN CAR

American cars took the first five places in a hill climb against time organized by the Natal, South Africa, automobile club for the Woolavington trophy. A British car was sixth, followed by two Italian cars.

The fastest time of the day, 56.45 seconds, was made by the American Jewett, driven by T. C. Erwin, according to word received by Harris French, local dealer.

The competition was held on Inchanga Station Hill, 21 miles from Durban, with a rise of 200 feet in a distance of 225 feet. The start was made on an up grade, with no chance to rush the first steep section. There was also a left-hand bend and a right-hand corner that tested the driving ability of the competitors, who were all amateur drivers of privately owned cars in standard touring type.

The race was electrically timed.

## J. B. GRAHAM NEW VICE PRESIDENT OF DODGE BROS.

NEW YORK (Special)—Joseph B. Graham was elected vice president in charge of manufacturing and A. Z. Mitchell, vice president in charge of purchases, at a meeting of the directors of Dodge Brothers, Inc., held in New York recently. J. B. Graham is president of Graham Brothers, truck manufacturers, now a division of Dodge Brothers, Inc. His election to a vice presidency follows the recent election of his brother Robert C. as vice president and general sales manager and Ray A. Graham, as general manager of Dodge Brothers, Inc.

J. B. Graham founded the Graham Glass company in 1909 and was president of the company for many years, his brothers being the other officers. He is the inventor of several glass making machines. He became a manufacturer of trucks in 1916 and has been president of Graham Brothers since the organization of the company. He is also president of the Hercules company at Evansville, Ind., is a director of the Citizens National bank there and is prominently identified

with other big companies. He has always directed the manufacture of Graham Brothers and is an authority on production.

A. Z. Mitchell went with the Gals Motor company in 1902 as book-keeper and then joined the Franklin Automobile company where he first met J. F. Hayes, now president of Dodge Brothers, Inc. From the Franklin company he went to Buffalo as assistant general manager of K. R. Thomas company, resigning to become general manager of the Gemmer Manufacturing company. He joined Dodge Brothers in 1914 as assistant factory manager. Mr. Hayes was then factory manager in 1912 and a year ago became vice president in charge of manufacturing.

There are more than six times as many passenger cars in the world as there are trucks. In the United States the ratio is 7.5 to 1.

## RUBBER PRICE MAY GO DOWN

(Continued from Page Nine.) act has been and is the real savior

of the rubber industry. "Our interests are common, except that Great Britain is in a far different situation than the United States as it relates to general prosperity, but Great Britain is certainly on the upgrade in its industry. I feel sure that the good feeling between the two countries which exists today should be strengthened and that we should confer and work toward one common end which, with two such large nations involved, would be for the good of the whole world."

"No one, either here or in Great Britain anticipated an increase of from 7,000,000 to 20,000,000 motor vehicles in America in the short space of three or four years. "You may be certain that the motor industry of Great Britain will do everything that is possible to remove any sort of artificial interference with production in rubber, as its interest is identical with that of the American automobile industry so far as tires are concerned. "I say advisedly that we are de-

lighted to discuss in the friendliest manner possible any joint steps which might be taken independently of government and on behalf of the commercial interests of our countries to bring the price of rubber down to economic levels, but do let us steer clear of exasperation which does not have a tendency to help matters. "No country in the world has had the experience nor can appreciate more than the United States, that the law of supply and demand will always continue to function."

# Good LOOKS- Cosy COMFORT

Smart body lines, clean-cut, swagger, low... a quality polished lacquer finish... big, wide windows... one-piece windshield... extra wide doors... give this car the appearance of double the money. Full Sedan dimensions... the widest seats ever built into a light car... leg-room that will surprise you... make it as comfortable as any light car you ever rode in.



SEDAN \$595 F.O.B. FACTORY

# OVERLAND

with SLIDING GEAR TRANSMISSION

Gettings & Hanks

## Laugh In the Face of Old Man Winter



LET this old man with his frosty breath and icicle beard blow his chilling drafts in your direction. However low he pushes the mercury in the thermometer, you can drive your car without a care or worry if you are using Veltex Winter Gasoline.

This new gasoline is a new Veltex Product. It is specially refined to give you better service in winter weather.

Veltex Winter Gasoline will make your car start quicker on cold mornings. It will do away with sputtering and back-firing and give you more miles to the gallon. And, it costs no more than ordinary gas.

Try a Tankful Today

Look for the Veltex Winter Gasoline Signs

Fletcher Oil Company

# Veltex WINTER GASOLINE

## Your Battery and Electrical Equipment

Require attention. Stop in and let us advise you. All work and parts guaranteed.

13-PLATE FORD BATTERIES, \$16.50

Fred T. Burgess

MAIN 125 Exide Distributor 1308 Jefferson

for Economical Transportation



# LOWEST TERMS

MOST folks buy their cars on the installment plan. The General Motors Corporation, with assets of over a Half Billion Dollars and One Hundred and Thirty Million Dollars in cash on hand, with no loans from banks or other outside sources, offers to the public what we believe is the lowest charge possible to obtain anywhere for a purchaser who desires to buy on terms. All Chevrolet Dealers have the General Motors Time Payment Plan available to their customers. If you buy on time, (as most purchasers do) you certainly should investigate and compare General Motors' charges for time financing as against any other. In many instances your present car will be of sufficient value to cover the down payment toward a new Chevrolet.

### HERE ARE THE NEW REDUCED PRICES

Touring Car, Now Only	\$510
Roadster, Now Only	\$510
Coupe, Now Only	\$645
Coach, Now Only	\$645
Sedan, Now Only	\$735
Commercial Chassis, Now Only	\$395
Express Truck Chassis, Now Only	\$550

All Prices F. O. B. Flint, Michigan

Blue Mountain Garage M. A. HARRISON, Mgr. Opposite Postoffice.

## QUALITY AT LOW COST

# Electrical Service for All Cars

A LARGE STOCK OF PARTS EXPERT WORKMANSHIP

Delco Klaxon Remy Bosch



BATTERY & ELECTRIC SERVICE CO.

1311 Washington Ave. DALE COX