



# Builders' Guide

## HINTS ON BUILDING



### BUILDING GOOD IN MID-WINTER

Reflections of economic and other activity in the building industry are illustrated by the national monthly building survey of W. W. Rouse & Co. for November, made public today. The outstanding feature of progress in the building industry in the year closed, says a November statement of the firm, is the 872,000 sq. ft. of space, which is a complete record of the industry last November, when the country as a whole showed a 300,000 sq. ft. increase over the same month of the year before last. The survey, which is published in the monthly Building News, shows that the building industry is still in a strong position to continue its growth in the coming year.

A volume of permits in 805 places of \$422,225,626, which is a gain of more than \$50,000,000 over last November, is the best city total of 48 per cent compared to a heavy loss last year in construction in the north, with an increase of 52 per cent reported in 78 cities in the south's steady construction. A gain was shown in the strength of the building industry and with the same supply equal to the demand for new building in 1925.

Practically all of the large cities of the country reported heavy increases for November. Philadelphia had a gain of 244 per cent, Miami, Fla., 200 per cent, Chicago, Ill., 150 per cent, St. Paul, Minn., 130 per cent, and New York City, N. Y., 120 per cent. Other cities showing gains were: Boston, Wash. D. C., Portland, Ore., Indianapolis, Ind., St. Louis, Mo., Newark, N. J., Portland, Me., Baltimore, Md., Philadelphia, Pa., and Jacksonville, Fla.

Large gains were also reported from the following states: Arkansas, Arizona, Connecticut, Illinois, Indiana, Iowa, Maryland, Massachusetts, Minnesota, Missouri, Montana, New Jersey, North Carolina, New York, Oklahoma, Oregon, Pennsylvania, Rhode Island, South Carolina, South Dakota, and Texas.

### SEVERE WINTER WEATHER

Temperatures in the north of the nation, the larger and colder areas, have been dropping and continuing to drop since last week. Conditions of cold weather are expected to be continued in the American Northwest. Chicago, in the center of the area, has had a very heavy snowfall, followed by several days of rain and sleet, and it is possible that snow will continue longer than there has been winter weather. During the week ended Dec. 15, there were 10.5 inches of snow, which was the heaviest snowfall since the winter of 1914, when there was a total of 11.5 inches.

In an effort to make the interior of the buildings a better environment, the National Fire Protection Association has approved the use of fire and burglar alarm systems in buildings. The association is now organizing in the hope of obtaining a copy of this book.

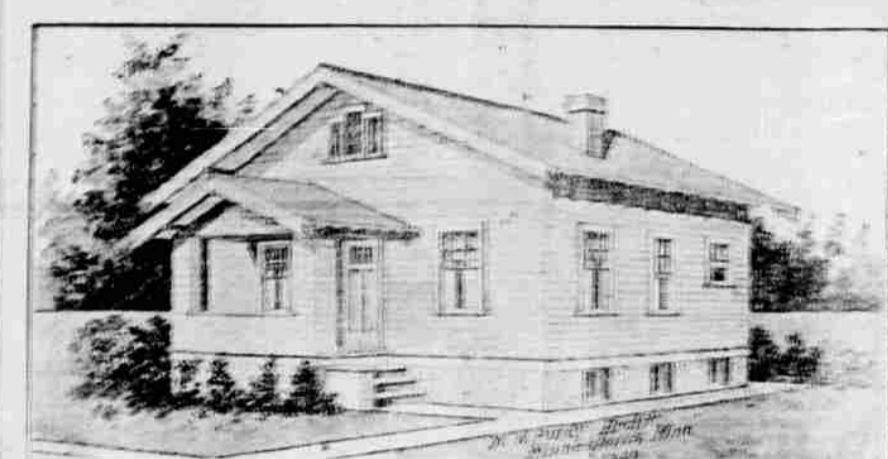
The largest grain elevator in the world is that of the Canadian National Railway at Port Arthur and Fort William, having 1,000,000 bushels.



We keep faith with the public.

**Fred Spaeth**  
PLUMBING, HEATING and SHEET METAL WORKS  
108 FIR STREET  
PHONE MAIN 586

### A Snug Four-Room Bungalow



(By W. W. Purdy)

The size of this small bungalow is 24 feet in width and 28 feet in length.

It is a very snug and economical little home, built with white-painted siding, painted white, the roof is shingled and stained green.

Entering from a small front porch into the living room 12 feet by 14 feet 6 inches, this room is lighted with two windows in front and one at the side.

The kitchen is 8 feet by 8 feet and 6 inches and provided with plenty of cupboards. There is one window on the left 3 feet by 11 feet with good outside view.

The stairs extend up from hall and down to basement from kitchen, with grade entrance at rear.

Between the dining room and kitchen is a breakfast room, which can be fitted with cupboards and used as a pantry if so desired by owner.

The floor is of maple and the ceiling of Washington fir, painted in main rooms are stained a medium brown and in the kitchen left natural.

There is a full basement under the whole house with a 12 inch concrete foundation. Basement is 7 feet in the clear and the first story is 8 feet in the clear.

It is estimated to hold this small house for \$2,000 to \$2,500 exclusive of heating and plumbing, doubtless in some sections it can be built for less.



### Radio Rap Knows Cook Dinner

KUONEN, Wis. — The "radio" dinner business is now being done in the kitchen of the home. According to Charles G. Hurd, county commissioner, who has just returned from the state fair, the radio dinner business is now being done in the kitchen of the home. The radio dinner business is now being done in the kitchen of the home.



We're still alive and doing fine. The wood we sell is yellow pine. The coal is black but very clean. The paint just coats a little better. Material sold without defect. The nails are made of common wire.

Color shingles by the bunch. When you build just take a lunch. And buy your stuff from Claude C. Pratt.

Then you'll know just where you're at.

**Claude C. Pratt**  
Lumber Co.  
"The Poor Man's Friend"  
Near Foundry. Phone M-218  
No Sunday Business

**A Christmas She Will Never Forget**

Give Her the World Famous Grand Prize Eureka Vacuum Cleaner

**FREE \$3.50 Set of Famous High Vacuum ATTACHMENTS**

**EUREKA**  
VACUUM CLEANER.

An opportunity you surely cannot afford to miss! Remember that these great cleaning tools (regularly priced at \$3.50 and worth far more in the corners of hundreds of thousands of users) are yours ABSOLUTELY FREE if you purchase your Eureka 7000!

Special Christmas terms—only \$4.95 down and the balance in the easiest kind of monthly payments—are available to you. But you must act quickly. Christmas is almost here! Come in and witness a demonstration of the unmatched cleaning efficiency of the Eureka and its attachments. The Eureka and attachments delivered when and where you say. Be sure to take advantage of this special offer. Act without delay and make use of the finest possible Christmas gift for her!

ONLY \$4.95 DOWN  
Easy Monthly Payments  
ONLY \$5.50 A WEEK

**Jesse Rosenbaum Electric Shop**  
Opposite Postoffice

A Solution of your problem:—

WHERE CAN I GET WHAT I WANT WHEN I WANT IT?

Our many years of experience enables us to fill your orders promptly and satisfactorily.

Our prices are right.

**STAR-A-STAR SHINGLES**  
While they last  
\$3.60 per M.

**Bowman-Hicks Lumber Co.**  
MAIN 8  
Chain and Box Wood, Main 547  
J. L. Munhall

**Here And There**

PORTLAND — Portland may build two more glass bridges, in addition to \$5,000,000 bridge program now underway.

PENDLETON — Dorion hotel to have three-story addition.

MEDFORD — Medford building permits for 12 months total \$352,814.

HOOD RIVER — Japanese fruit-growers at Hood build \$10,000 community home.

SALEM — State has just completed \$10,000 open air pavilion at tuberculosis hospital.

SEASIDE — Eugene building permits for first 12 months of 1925 were \$7,543,230.

Now you "Spin-Rinse, Spin-Dry" Instead of Wringing

Now you wash, blue, rinse and dry a load of 7 large sheets, all in the same tub, without putting your hands in water! The secret is the wonderful "Spin-Rinse, Spin-Dry" feature of the **SAVAGE WASHER & DRYER**

From clothes basket to clothes line — 18 minutes. No straining or lifting; no wet hands; no broken buttons; no "wringing creases"; no iron out. Just rest while your Savage works!

**HAVE A FREE DEMONSTRATION**

**NATE ZWEIFEL**  
PLUMBING - HEATING  
Oil-O-Matic Burners - Koehler Light Plants  
Fairbanks-Morse Water Systems

15 MINUTES to wash and blue an entire tubful.  
2 MINUTES to "Spin-Rinse" the entire load.  
1 MINUTE more to "Spin-Dry" everything ready for the line!

**Floor Sanding**

Our electric floor sander will put your floors back in shape. Make an appointment now and be sure of having your work done before the Holidays.

**La Grande Construction and Supply Company**  
CHAS. HARRIS.

CHOOSE AN ELECTRICAL GIFT

**H & S Electric**  
Summer Hotel Bldg.

**A COMPLETE YARD**

Lumber  
Paints and Oils  
Builders Hardware  
Lime and Cement  
Coal

**Grande Ronde Lumber Company**

Retail Yard Across the Tracks on Greenwood Avenue

It's common the work of creating new plants and flowers, based on the latest proposals, to take over Luther Burbank's experimental farm.

Winter seems to be a very profitable time for the farmer.

**BUGG PAINT COMPANY**

Paints, Oils, Glass, Varnish, Brushes and Painter's Supplies

L. O. O. F. BUILDING  
Entrance on Washington