

Highway and Auto Dope

Tourist Traffic and News

AUTOMOBILE NEWS

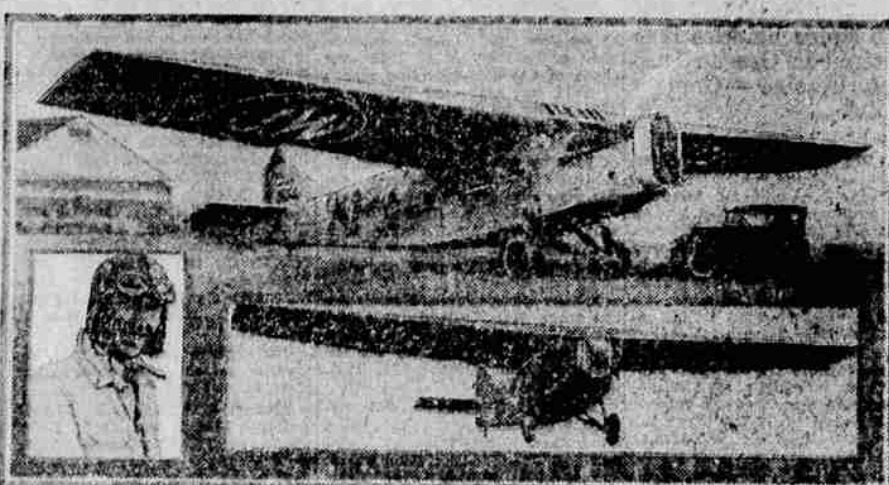
NEW FEATURES MARK MODELS

DETROIT (Special)—With the opening of the New York national automobile show just six weeks away, the automobile industry here is knee-deep in preparation for its greatest national event.

will be lower than ever, and lighter in weight. Particular attention will be paid to body finishing and colors. Greater variety, range and ton of colors will be noted on next year's automobiles than during any year since the advent of the motor car. One or two companies that have heretofore confined themselves to summer blues and blacks, will step out with a blaze of browns and grays. Dues and luxury finishes will be almost universal, as will the two-tone finish.

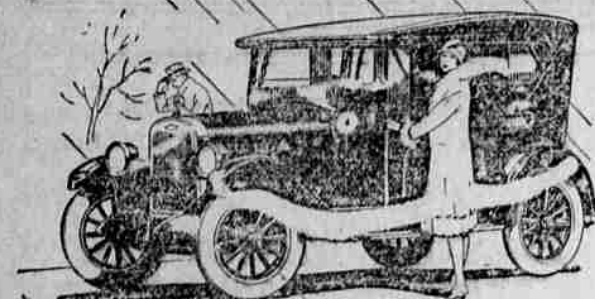
Engineering efforts to reduce wind resistance will, in many cases

Road Ford Calls on Young Air Ford



Here are two views of the first Ford airplane, J. W.-1 to be put on public sale. First is the pilot who drove the J. W.-1 from Detroit to Mitchell Field, New York, in 6 hours. Some idea of what a wing spread of 58 feet, 4 inches means is gained by the minuteness of the Ford car seen nestling under one wing, with room enough left over for three or four more without crowding.

Comfort in Any Weather



Full protection in any weather—comfort in winter—saunders against snow, sleet, and rain—that's what you enjoy when you drive the Chevrolet touring car!

Fine quality curtains, carefully tailored and close fitting, keep the cold out and warmth in.

The Chevrolet touring is the lowest priced car of equal quality and equipment on the market. It offers all the advantages of economical operation all the year around: an open car for the open road in summer and snug comfort for winter driving.

Come in! Satisfy yourself that here is a low priced touring car that offers real all-weather protection.

The Touring Car

\$525

- Roadster - \$525
- Coupe - 675
- Coach - 695
- Sedan - 775
- Commercial chassis - 425
- Express Truck chassis - 550

Special Glass Enclosure at Small Additional Cost

result in the use of bullet lamps, narrower fenders and the elimination of other matters that make the pulling just a little more difficult.

Motors to be Smaller.

Following the trend of the last three years, motors will be smaller, with higher compression favored. Economy will be given due thought, but it is virtually not a great factor as the average motorist is led to believe.

Speed will be a dominant attribute of the 1926 cars. Due to the coming of privately-managed toll roads, super-highways and speed thoroughfares, it is believed that the fast car will be even in greater demand than ever next year. With few exceptions every make of car offered for 1926, will be faster, and improved in accelerating qualities as well.

Best and most interesting of all—prices will be lower. One of the reasons for this is the fact that the bulk of the automobile business is steadily drifting into the hands of fewer manufacturers. Greater volume production is making possible economies in which the public will share.

"Poor Jerry smashed his car and got pinched yesterday."
"Really? What was the charge?"
"Driving under the influence of woman."

AUTO COMPANY HITS STRIDE

"The production division of the Chrysler Corporation, in order to keep pace with the increasing public demand, achieved a success during the summer and fall months which has come very close to setting a new record in manufacturers' annals in the automobile industry," states Leo French, local distributor.

"To have built two cars within 20 days time, where only one was built before, is an achievement performed by the Chrysler manufacturing department under the direction of W. Mitchell, vice president in charge of manufacturing."

"This was only made possible by the most careful coordination of all the phases of production. Doubling the production was more than merely a problem of quantity. The increase in output was coincident with the introduction of twelve new body types, each constructed on a finer and better scale than any of its predecessors."

"This new era for Chrysler was attended by no violent disruption of existing conditions. New materials were purchased and received without excessive obsolescence on the old models and with an absence of stock shortages, new machinery and tools were designed, constructed or purchased, and placed in operation without interruption; existing machinery and tools were revamped and made available for the new product without loss of output and with a minimum of discard; over five thousand new employees were added to the pay rolls without loss of productive efficiency; and the whole program was attended by the application of closer tolerances and limits."

"Chrysler's place in the industry can best be pictured by a review of concrete figures. Its annual production when loaded into freight cars would make a train 200 miles long, the distance from Cleveland to Chicago."

"Placed end to end the number of automobiles would make a line 260 miles long, the distance from Chicago to Minneapolis. The movement of this product to Chrysler factories and to the ultimate consumer requires railroad equipment equivalent to a train of 100 cars circling the globe twelve times. One hundred and fifty million dollars' worth of material is purchased from vendors."

"The freight bill on this material is over two and one-half million dollars. Ten million dollars' worth of machinery and equipment is required for manufacturing purposes only. Twenty thousand employees draw an annual payroll of forty-five million dollars. One thousand of these employees are inspectors engaged in the rigid task of protecting quality. The plants cover an area of two acres, equal to a square of eighty city blocks."

"The aim of the production division is to produce and ship the finest quality cars in the quantities to meet sales schedules and at costs to permit of selling prices consistent with quality merchandise."

Interest Is High in Pacific Coast Show

The tenth annual Pacific automobile show will be held in the Exposition auditorium in San Francisco January 20 to February 6 according to an announcement by George A. Wahlgreen, veteran show manager.

The advancing of the dates of the show to the first of February instead of the middle of the month will give the coast fans an earlier opportunity to see the new models of the year and will bring the San Francisco show dates almost at the same time as the Chicago national automobile show.

The interest of the dealers and the public in the show this year will be greater than ever before.

in the opinion of men high in motor trade circles here, for never before in the history of the industry have the motor car values been so high or the prices so low as they are this year.

If you can make your handkerchiefs do a few more tricks, you will get some new one for Christmas.

Used Parts
CAR STORAGE
La Grande
Wrecking Co.
Cor. Jeff. and Hemlock

FIRST

for the 8th Consecutive Year at the National Automobile Shows

Again Buick has won first place in the motor car industry. This year, as in every one of the preceding seven, the public has invested more dollars in Buick automobiles than in other cars built by any member of the National Automobile Chamber of Commerce.

This entitles Buick to first choice of display space at the National Automobile Shows in New York and Chicago.

For eight years Buick has dominated quality motor car sales, enjoying nearly a decade of leadership, while a host of other fine cars were striving for the place of honor held by Buick.

A better idea of the magnitude of this Buick achievement may be obtained when you consider that to duplicate it, a motor car would need to capture first place now, then hold it continuously until 1934.

To have won the lion's share of public preference, year after year, for so long, conclusively shows superior merit in the Buick product.

Buick has built a better motor car, and public recognition has followed—has singled it out as the one car among all—which contains in the greatest measure the essentials of dependable, economical and luxurious motoring.

BUICK MOTOR CO., FLINT, MICH.
Division of General Motors Corporation.

LOOK OVER OUR WANT ADS FOR BARGAINS

Blue Mountain Garage

M. A. HARRISON, Mgr.

Opposite Postoffice

QUALITY AT LOW COST



TIME SAVERS

"Caterpillar" Tractors, powerful and dependable, save time for their owners. The contractor can handle more jobs. The public can the sooner enjoy the smooth surface of a finished road. The farmer has more time for recreation. And time is money! Catalogs and folders are yours for the asking.

Bunting Tractor Company

Dealer Northeastern Oregon and Southern Idaho
Jefferson and Elm Streets
Phone Main 534



58 MILES PER HOUR
25 MILES to the GALLON
5 to 25 MILES in 8 SECONDS

Only Chrysler Four Combines These Performance Abilities

The Chrysler Four's extraordinary performance—its direct and positive evidence of the highest quality in design, materials and craftsmanship—literally leaves no alternative in its field.

Today's market holds nothing of any type, approaching the Chrysler Four price range, which even remotely approximates its supreme combination of performance abilities.

In speed, the Chrysler Four gives you a new standard—58 miles an hour, achieved quickly and easily, not for a momentary spurt, but for eager mile after mile, as long as you like.

When you would dash away ahead of the crowd in traffic, the Chrysler Four whisks you from 5 to 25 miles in eight seconds—with sure-footed reliability and purring smoothness.

Yet, with all the super-power necessary for such speed and such swift pick-up, you can get 25 miles to the gallon.

Any one of these exceptional abilities would be sufficient evidence of value for any manufacturer except Chrysler: the three of them clinch the assurance of Chrysler Four's transcendent quality and worth.

We are eager to afford you the opportunity of proving the superiority of this favored Four. We ask you to ride in the car—drive it—see and feel for yourself, its speed, its swift response, its pliability of power, its smooth operation, and even more particularly, its riding steadiness and comfort. Then, we believe, you will inevitably share in the enthusiasm of its tens of thousands of owners.

CHRYSLER FOUR

CHRYSLER FOUR—Touring Car, Sedan, Coach, Coupe, Roadster, Sport, Cabriolet, Truck, Van, etc.
Hydraulic four-wheel brake at slight extra cost.
CHRYSLER SIX—Phantom, Sedan, Coach, Street Roadster, Sport, Sedan, Coupe, Roadster, Sport, Coupe, Sedan, etc.
All prices f. o. b. Detroit, subject to change without notice.
Bodies by Fisher on all Chrysler standard models. All models equipped with full factory accessories.

We are pleased to extend the convenience of this performance. Ask about Chrysler's attractive plan. Chrysler dealers and approved Chrysler service centers.

LEO J. FRENCH, Cor Jefferson & Elm, Phone 499-W