

Highway and Auto Dope

Traffic and Tourist News

AUTOMOBILE NEWS

AJAX MODELS ARE PRAISED

The new Ajax six on display in La Grande at the B. C. Hamilton Motor company, is now available in two body styles—a five-passenger four-door sedan and a five-passenger touring model, according to H. C. Hamilton.

"Though not as large as the Nash product, it has an over-all length of 154 1/2 inches," he states. "Both the touring car and sedan bodies are of beautifully modeled design. Their attractiveness is further enhanced by the use of a double head at the belt line. They are mounted on a low-hung frame, thus assuring road steadiness at all speeds.

"The seating arrangements in

both cars provides the occupants with unusual room and comfort. The compactness of the motor construction, due to the use of the 7-bearing crankshaft, made it possible to provide this moderate size car with more than usual body room.

"The body construction of both touring car and sedan is extremely strong and of splendid workmanship. Both bodies are finished in a deep green Duco with black belt moldings, black enamel fenders, and deep green Duco wheels. The sedan top is also in black.

"The touring car seats in back are upholstered in genuine leather toned to match the body color and the sedan cushions and backs are upholstered in mohair of an attractive green shade patterned with black stripes. The upholstery in both cars is quite deep and comfortable.

"The equipment of the Ajax six is in keeping with the high standard of quality which prevails throughout. It includes automatic windshield wiper, rear view mirror,

cowl ventilator, transmission lock, cowl parking lights and headlights with dimmers. Both cars have one piece windshields hinged at the top and there is a sun visor on the sedan."

HAWK INJURES MAN'S EYE

CANBY, Ore.—M. P. Lee, rural mail carrier working out of Canby, probably lost the sight of one eye when attacked by a large hawk which he shot from his automobile while on his route east of town.

Presuming the bird was dead, Mr. Lee got out of his automobile and attempted to pick it up. As he stooped to the ground the hawk suddenly jumped to his face and thrust its bill into Mr. Lee's eye. Mr. Lee was taken to the Oregon City hospital.

Life is mountains and valleys. When on the mountain, enjoy the valley. When in the valley, appreciate the mountain.

PHOTOS SHOW FACTORY WORK

The marvels of modern automotive precision and production methods are depicted in a series of 42 enlarged photographs now being shown to the public at the sales-rooms of all American and Canadian Chevrolet dealers, according to Avery Harrison, of the Blue Mountain garage.

"The photographic series covers the same interesting operations in the manufacture of Chevrolet cars which would be shown a visitor at the factories," he says.

"One of the most spectacular pictures shows a huge drop forge hammer weighing 140,000 pounds. Hammers of this type are used to make the Chevrolet crankshaft. The falling weight is a three-ton block of steel which is lifted by steam. It is so responsive to the touch of the skilled operator that they are able to place a watch on the bottom die block and strike it with the hammer so delicately that the crystal remains unbroken. Each hammer will forge 880 crankshafts during a 10-hour day.

"Other striking features of the exhibit are pictures of a monster machine which uses 300,000 amperes of electricity to weld the Chevrolet one-piece built-up rear axle housing; a machine which drills 32 holes simultaneously in the bottom of the Chevrolet cylinder block; a rotary milling machine which finishes at one operation the lower sides of six cylinder blocks and a 62-ton press which forms a Chevrolet fender at one stroke.

"The individual grinding of valves, the delicate balancing of pistons so that every piston in each motor weighs the same and many interesting micrometric inspections also are illustrated in the remarkable exhibit."

CHECKS ARRIVE AT BANK

OREGON CITY, Ore.—Forged certified checks totaling about \$2000 were received by the Bank of Oregon City through the Portland clearing house. The checks, ranging from \$175 to \$500, were given by a swindler in Portland Saturday in exchange for diamonds which he purchased at a number of homes after obtaining his leads through an advertisement.

The swindler had had a rubber stamp made, the exact duplicate of the one used by the bank in certifying checks. On the dotted line he had forged the signature of Percy P. Caulfield, assistant cashier.

The loss, according to bank officials, will be borne by the woman who accepted the checks, as the bank is not liable.

The bank recently received warning that a man had perpetrated a similar fraud in the east.

Equalization Board Meets

SALEM, Ore.—The state board of equalization, composed of the governor, state treasurer, state tax commissioner and secretary of state, went into session here for consideration of complaints in connection with property valuations. Meetings will be held frequently during the next month. Under a new policy adopted by the board consideration of complaints will be set a week in advance. This will give all persons interested an opportunity to attend.

Getting a Taste



When Armour T. Phillips was fined \$100 with the option of a 10-day jail term on a Los Angeles speeding charge, he elected to pay \$75 and serve 30 days behind bars—"just for a taste of the sort of thing my wife is subjected to." Phillips is the husband of Clara Phillips, noted "Chamner murderer" now in San Quentin (Calif.) prison. The picture shows Phillips "doing time."

Trials Will Hear Sentences

KLAMATH FALLS, Ore.—Sentences will be pronounced on Jim Burke and Charles and Edward Fuller, who were convicted by a circuit court jury last night of attacking Ed Kendall, ex-deputy sheriff, with a deadly weapon. Burke was convicted of assault with intent to kill. The deputy was badly wounded with a bullet wound in his arm when he attempted to arrest the trio last June on a liquor charge.

YOUTH RECEIVES PAROLE

OREGON CITY, Ore.—Archie Livingston, Portland youth, sentenced to serve two years in the state penitentiary by Judge J. U. Campbell in circuit court here in April, 1924, after he had been convicted of a statutory crime, was paroled by Judge Campbell pending good behavior. Allen Law-pugh, sentenced to serve five years for a like offense, was taken to the penitentiary by Sheriff Mass, and Allen McLaren, another member of the trio, will follow in a few days to begin a four-year sentence.

Following their conviction in circuit court the three youths appealed to the supreme court, but the decision of the lower court was upheld. Last week Judge Campbell signed a mandate of the supreme court ordering the sentence of the lower court carried out. The crime for which they were tried was alleged to have been committed just over the Clackamas line from Multnomah county and involved three Portland girls.

HORSES AND AUTOS IN CLOSE RACE

(Continued from Page One.) Drivers rate their horse-drawn delivery efficiency from 6 to 20 miles, but almost all the large users of horses in the city agree they can beat the truck for economy in short hauls.

CHEESE FACTORY LOOTED

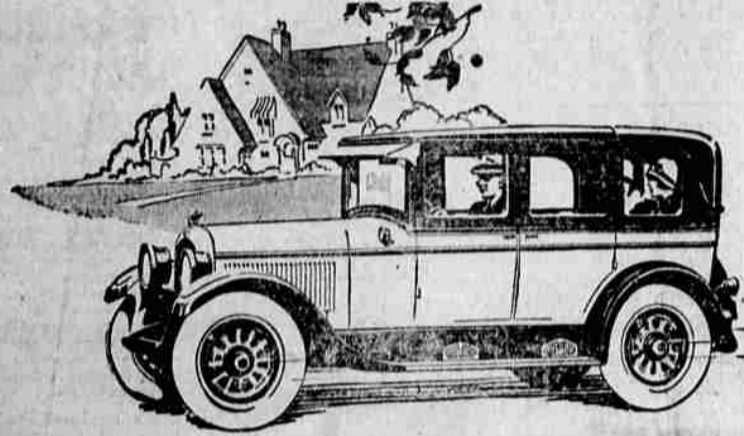
TILLAMOOK, Ore.—Fingerprints on two pieces of cheese was the only trace left by the thieves who looted the cheese factory at Benyer, Ore., taking 1450 pounds of cheese and 40 pounds of butter, the loss being estimated at \$140. The robbery was believed to be an expansion of the activities of the butter thieves who have been raiding Willamette valley creameries for several weeks. The loot, it was believed, has been disposed of through Portland sources, and the finger-printed cheese has been sent to Portland to assist the police there in running down the culprits.



Built for Rough Roads Better BUICK Closed Cars

Extra sturdiness is an outstanding feature of Buick motor cars. Buick closed cars demonstrate this most strikingly in cross-country travel. Town or country, good roads or bad, it's all the same to a Buick. You can go anywhere any car can go and do it much easier because of the famous, 75 horsepower, Buick Valve-in-Head engine. You can travel long distances in more comfort because of the deep, wide, luxurious seats the extra head and leg room, and full cantilever rear springs. And Buick's ball bearing, worm and nut steering mechanism removes all driving strain. This is the most efficient and most expensive steering gear so far perfected. Better Buick closed models are now on display. Your attention is particularly directed to the 4-door and 2-door Fisher Body Sedans at "Coach" prices!

BUICK MOTOR COMPANY, FLINT, MICHIGAN
The Better BUICK
WHEN BETTER AUTOMOBILES ARE BUILT, BUICK WILL BUILD THEM
Jennings and Shumate



You Don't Have to Pay a Penalty for Motor Luxury

Just ask yourself what it is you most desire in your car. Acceleration? Speed? Everyone knows the ease of Chrysler's 70 miles plus. Roadability? Comfort? No, no matter how many hundred extra pounds it is burdened with in the effort to obtain greater riding ease, equals the new Chrysler Six in these features due to the low center of gravity and the Chrysler type of rear spring mounting. Freedom from mechanical attention! The Chrysler Six has a world wide reputation for no-

tably uninterrupted service. All this the new Chrysler Six at the new low prices gives its owners at half the purchase price of cars presumably having comparable quality—yes, and at far, far less than the operating and maintenance cost of the more cumbersome cars. We are eager to have you prove all the new Chrysler Six does. Then you'll see why no other car, at any price, affords what has come to be trade-marked in the public mind as "Chrysler Six performance."

CHRYSLER SIX

LEO J. FRENCH, Cor Jefferson & Elm, Phone 499-W

Do You Always Get What You Want?

There is an absolute certainty about Veltex Petroleum products. They are always refined exactly to specifications. Strict uniformity is maintained by rigid observance of this rule. You will know what you get if you use

Veltex

FLETCHER OIL COMPANY
First Independent in the State

Wiz' at Figures



Jimmie Barrett, above, is 9 and in a University of Southern California test of 25 mathematical genius it took him less than one second for each of his years to tell the cube root of 410,712,497. Jimmie lives in Los Angeles.

"A 25% cut in overhead puts \$50,000 a day back into the public's pocket!"

Intelligent economy . . . Sensing and adopting, in advance of anybody else, the newest and most efficient equipment and methods have made this low price possible.

For Extra Good Measure —over and above

. . . many major feature—one patented, exclusive—91 all told—that come to you with this superlative among light cars!



Now \$595
A Full Size 5-passenger Sedan for \$595

- Rhythmical Riding**
In this great light automobile you ride buoyantly, in cradle-smoothness. TRIPLEX SPRINGS—patented, exclusive. That is what does it. . . 30 inches more spring-supported area—that is the source from which this super-riding-comfort comes! . . . the Triplex Spring of the Overland pull—they do not push, as do all other types of spring. Attached to the frame, 15 inches in front of the wheels, they lift their load gently, smoothly, over any obstruction.
- Easier Riding—Easier Parking**
30 inches more spring-supported area, with 30 inches less wheelbase to park! . . . It is much easier to handle a small car than a big car. In traffic you weave in and out, where your big, long car has to have plenty of space. . . take parking. Your Overland Standard Sedan packs "in between" a close-packed line of other cars—it can be "sandwiched in" almost anywhere! . . . but how hard the average small car rides compared with your Overland. It's a case of 100-inch wheelbase against 130-inch spring-base. All easy riding is a question of springs.
- Overland engineering the most advanced in the industry**
. . . and Overland engineering has found the answer to that difference in wheelbase, absolutely. . . TRIPLEX SPRINGS! . . . This patented and exclusive Overland principle gives longer life to every mechanical part—easier operation to the car itself. Spring troubles are cut to a minimum. 100-inch actual wheelbase—that's easy parking! 130-inch spring-base—that's easy riding!
- Observe the smart, clean-cut lines of this car**
—it is rakish, low—plenty of room in it—unequaled in comfort for driver and passengers—body finished in polished lacquer, a rich deep blue with glistening jet-black trimmings.
- Wider seats—big windows**
—the widest of any light car built—new, single-piece, undivided front seat, 30 inches wide, 19 inches deep; wider back seat, 45 inches wide, 18 inches deep.
- more than 20 square feet of window space.
- Extra wide doors, too**
—easy entrance and exit to both front and rear seats. No discomfort to anybody getting in or out.
- Very latest one-piece windshield**
—especially valuable in night-driving. Gives clear, unobstructed vision. More easily adjusted—you don't have to fuss with it. Adds greatly to the car's appearance. Easier to clean and to keep clean.
- And new cowl ventilator**
—a comfort any late model big car gives, new in the light car. Lets fresh air circulate continuously through the lower part of the car. Then add to all these things a 27-horsepower engine, fast, sturdy, reliable. . . Three speed, selective sliding-gear transmission. . . Borg and Beck disc type clutch, one of the best clutches made. . . Auto-Lite starting, lighting and ignition. A wonderful rear axle system, equal to that used in cars of double the weight. Axle shafts of Magnadann steel, the toughest steel known to engineering. . . A Chassis of remarkable strength.

Standard OVERLAND Sedan GETTINGS & HANKS