

COLLEGE FIVE CENTURIES OLD

OXFORD, Eng. (AP).—Christ church, the largest and most notable of Oxford colleges, begins the fifth century of its existence this month. For reasons of convenience, the celebration already has been held, so the true birthday of this curious institution, which is both a college and a cathedral and yet is called a church, will pass quietly during the June vacation.

Modern investigation has revealed a remarkable continuity in the history of English ecclesiastical foundations. The Saxons built their churches on the ruins of the great Roman temples, and the Normans in their turn rebuilt the Saxon churches. This continuity is most remarkable in Oxford, where nearly every college has grown out of a medieval monastery. Christ church stands on the site of a priory, a parish church and at least two other monastic colleges. Its bells were removed from a neighboring abbey, and both the stones and the grates used in its construction were obtained from the dissolution of more than 40 monastic foundations.

In 1846 the tercentenary of this same college was celebrated, and in a sense properly, for 1846 was the date of its last foundation. The true credit belongs, however, to an earlier date and to Cardinal Wolsey, son of an Ipswich brewer, who began it as Cardinal college at a time when he was the favorite of King Henry VIII and stood second only to him in power and pomp and fortune. Wolsey was nothing if not a man of action. To make room for his college a quarter of the city of Oxford was pulled down. In the first year alone he spent a sum equivalent to three-quarters of a million dollars. His plan was to build the great church of St. Frideswide, which serves as the cathedral of the Oxford diocese, and to be raised to make room for his college chapel. His kitchen is one of the largest in the country and the great dining hall is second only to the hall of Westminster in size and grandeur.

King Steps In.
When Wolsey fell from favor his college was taken over by the king, who refounded it under his own name, then suppressed it as a college to unite it with his new Oxford diocese.

Beside Wolsey's great hall and kitchen, Christ church boasts two of the finest English examples of the Gothic style of architecture. Both built more than a century after Gothic became merely a historical term. One of them, the stairway to the hall, was designed in 1446 by a genius known only as "Smith of London." The other, Tom Tower, carrying the Great Tom bell which every night rings 161 peals to announce the closing of college gates, was designed by Christopher Wren, architect of St. Paul's, in one of the few happy moments when he really seemed the feeling of medieval builders.

Christ church in its 400 years has contributed its share of illustrious names to history. American as well as English. William Penn was a student of the House until he was sent down for his religion, as was George Grenville whose stamp act led to the Revolution and the loss of the American colonies. Sydney, night and day, Hakluyt, the geographer, Ben Jonson, John Locke, the philosopher, Bishop Stubbs, the historian and "Lewis Carroll," author of Alice in Wonderland, are but a few of the great Christ church company. The college has been fortunate in its rulers, nearly all its deans being men of great ability. One was the greatest smoker of his day, and when a lot was made that he would be smoking his pipe at ten in the morning it was only because he was clearing his pipe at the moment. Another worthy dean, called "Prose-of-rod Smith," won this unusual designation for thumping with an ear a boating companion who had fallen overboard and was risking the dean's safety by his attempts to re-enter the boat.

In 1525, William Tyndale said, "If God spare my life, ere many years I will cause a boy that driveth a plow shall know more of the Scripture than thou dost." That is why this year, 1925, is the 400th anniversary of the completion of Tyndale's Bible. Just 56 years later, the Authorized Version appeared.

To 1525, William Tyndale said, "If God spare my life, ere many years I will cause a boy that driveth a plow shall know more of the Scripture than thou dost." That is why this year, 1925, is the 400th anniversary of the completion of Tyndale's Bible. Just 56 years later, the Authorized Version appeared.

Keep Flies from Stock with KORINEK'S Fly Spray Milk with ease from contented cows

THE L & L DRUG CO.

Asleep in the Deep



Sidney Helms of Des Moines, Ia., has completed a 200-mile trip down the Mississippi River on a mattress. He is a mattress salesman and the mattress he sells float. So he put a light wooden frame around one, gave the bow a toboggan flare, stuck an outboard motor at the back and set up a speed of eight miles an hour. He went from Keokuk, Ia., to St. Louis.

SURPLUS FAT LOST IN CAMP

HEADQUARTERS, CHIEFS Military Training Camp, Camp Lewis, Wash. (Special).—The 636 young men from Oregon, Washington and Northern Idaho who last week completed a month's training at the military training camp at Camp Lewis carried home with them, in the aggregate, over one and one-half tons more of solid flesh than when they came to camp. On the average, there was added to the weight of the camp, each day, over 100 pounds in extra avoirdupois.

These figures have been compiled by Major Thomas W. Burnett, medical corps, U. S. A., camp surgeon. Upon arrival in camp June 15, each man was carefully weighed. He was again weighed prior to his departure. The average gain in weight was five pounds. The greatest individual gain was 12 pounds. Fat content of soldiers' fat weight. The largest individual loss was 13 pounds. This individual lost entered the camp weighing 222 pounds and left weighing 199.

Major Burnett's report further shows that since the first citizens' military training camp at Camp Lewis four years ago, there have never been any fatalities from disease or injury. Three thousand men have been trained in the five camps starting in 1921. All camps have been free from disease resulting from mosquitoes. No cases of acutely infectious and easily communicable disease occurred during this year's camp although in the four previous camps there were one case of pneumonia, one scarlet fever, one mumps and one chicken-pox case. All students were protected against accidental exposure to smallpox and typhoid fever by vaccination. All food supplies for Camp Lewis are closely inspected, the milk is pasteurized and the water supply perfect.

BUBONIC PLAGUE SPREADS

MOSCOW (AP).—The bubonic plague is spreading dangerously in the lower Volga region despite vigorous efforts of the government to check the outbreak. Fifty-one deaths from the plague were reported last week, bringing the total to almost 100 since the epidemic appeared in June. Special hospital barracks are being built for the isolation of patients.

The saliva from the upper jaw of the Gila monster of Arizona is not poison, but that from the lower jaw will kill a rabbit in two minutes. Little injury to man has resulted because of the difficulty the monster has in penetrating the skin with its lower jaw.



Claude C. Pratt Lumber Co.
"The Poor Man's Friend"
Oppo. Foundry. Phone M-248
No Sunday Business

Wealthy Indian Prince To Visit South America

BUENOS AIRES (AP).—It is announced that the Maharajah of Kashmir, one of India's wealthiest princes, will soon be a guest of Buenos Aires, having already reserved an entire floor in the city's largest hotel for himself and suite. The Maharajah will be the first ruling prince of India to visit Argentina and he is expected to arrive a few days before the Prince of Wales.

This Indian prince, who has been a ruler since the early age of three years, caused a sensation some years ago by marrying the Spanish dancer, Anita Telgado, and in a well known figure in the capitals of Europe. He always travels in great state, with a numerous retinue, and an extraordinary quantity of luggage.

The Maharajah proved his loyalty to the British Empire during the World war by placing his entire yearly income of more than \$2,000,000 at the disposal of the British government.

FARMERS' INCOME LARGE

WASHINGTON (AP).—Farmers received a gross income of \$12,136,000,000 for the year ended June 26, which, the department of agriculture estimates, was more than they had taken in during any year since 1921.

The income was \$545,000,000 greater than last year, and was attributed almost wholly to the increased value of grain and livestock, particularly wheat and hogs.

The cost of production last year was placed at \$7,486,000,000, or nearly 2 per cent greater than the \$7,352,000,000 estimated for the year before. The increase in gross income over the fiscal year 1924 was fixed at 73 per cent.

Since a number of deaths from tetanus have resulted after using human pools after vaccination, the Public Health Service has issued a warning against their further use.

2,500 Dorkies Expect To Visit Two Cities

HOQUIAM, Wash. (Special).—With 1200 reservations already received Aberdeen and Hoquiam now expect to entertain at least 2500 Dorkies and Knights of Pythias here at the Annual Northwest Convention August 2, 3 and 4.

Free lunches, an excursion to the beach where waif dinners will be served, excursions through the forests and about town, especially hand concrete and drill team contests are on the program. Three thousand dollars will be spent in decorating the two cities for the visitors. The convention will be staged in the most elaborate style since the 1918 state convention was held eight years ago.

These bands already have made reservations at the Portland, Astoria and Vancouver, B. C. hotels. The Portland and Vancouver city and district bands also are planning. A full demonstration has entered drill teams in the competitive drill contest.

Women may talk more than men, but they don't say as much. That shows women have the most sense.

AMERICA'S Greatest VACATION

The "Double Triangle" Tour
Canadian Rockies
Jasper National Park
Scenic British Columbia
Every mile a picture!

Scenic Booklet Free

A. B. HOLTROP,
City Pass Agent
122 Third St.,
PORTLAND, Ore.
Phone Broadway 3100

\$68.20
ROUND TRIP
from PORTLAND

LOW SUMMER FARES EAST

Why be a Slave to a Stove?

You no longer use the broom or the sad-iron, why put up with an old-fashioned stove that demands your limit of time, strength and patience? The Westinghouse Automatic Electric Range will cook and bake for you, and conserve your strength for better things. It is a real servant, requiring no attention till you remove the dinner deliciously cooked, and piping hot. It works while you're away, in a dependable, lighter, willing, economical, convenient to the extreme.

It's a real story. Want the facts?

This is a larger Westinghouse Automatic Range with the clock. Two large ovens, maximum convenience, dependable.

This is Westinghouse Semi-automatic Range 2-15-B for use in kitchens where space is limited. A real range! Economy, convenient.

This is Westinghouse 415 Range, selected for the kitchenette, two burners, roomy oven.

The new Junior Cabinet Automatic Electric Range large enough for family of six.

Westinghouse

"The Range with the Clock"

Only \$1.00 down secures this Range and only \$5.00 a month pays for it. An \$8.75 Westinghouse Automatic Iron FREE with each Range sold this campaign.

UNTIL JULY 31ST—ACT NOW!

Eastern Oregon Light & Power Company

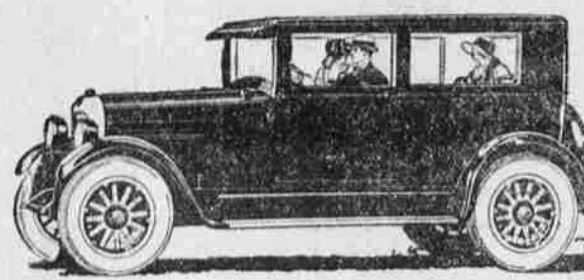
"Electric Cookery is Modern Cookery"

Cooking grains for pig feed has been shown by feeding tests at the U. S. experiment station to be not only of no value, but detrimental. While it may have slight beneficial effect on the starches...

ability of protein and mineral matter. Potatoes, being very starchy, must be cooked for best results. Roots are not often improved by cooking, and steaming the pick in the ice box.

California has not proved profitable so far at Corvallis. Summer brings the trouble among which is trying to keep the pick in the ice box.

How this One-Profit Coach is built by Studebaker on the sturdy STANDARD SIX CHASSIS



SUPERFICIALLY other coaches may resemble this Studebaker Standard Six, but the resemblance will not stand analysis.

Only two cars are made on a one-profit basis—Ford in the lower price field and Studebaker in the fine car field. Only in these two cases are all bodies, engines, clutches, gear-nets, springs, differentials, steering gear and axles designed, engineered and manufactured by one company.

Contrast this with the average car, where the extra profits of many outside parts and body makers must be included in the purchase price.

These profits are part of the production cost of the car—the same as the steel and wood of the body. They do not buy materials nor workmanship—they do not make any car one whit better.

Studebaker has achieved one-profit manufacture through years of far-sighted management and through sacrifice on the part of stockholders. Earnings which might have been distributed have been retained in the business to build one of the largest gray iron foundries in the world, to erect stamping mills, forges, etc., to purchase the finest labor-saving machinery, to construct enormous body-building plants.

As a result, resources totaling one hundred million dollars are concentrated upon the production of one-profit automobiles such as this Standard Six Coach.

What does it mean to you? To you, as an automobile buyer, this means:

1. A Lower Price.
2. A Better Car.

A LOWER PRICE, because Studebaker does not need to pile its profit upon the profits of outside parts manufacturers and body builders.

A BETTER CAR, because it is a thoroughly coordinated, harmonious unit. Every part designed,

\$515 DOWN

And the balance in monthly payments. Come in and see how easy it is to buy this Standard Six Coach on our liberal budget payment plan.

engineered and manufactured under one management, to work more efficiently with every other part.

A better car because Studebaker can afford to use finer upholstery, better steel, higher grades of lumber, more painstaking workmanship in hundreds of unseen places.

Scores of thousands of miles of excess transportation are built into every Studebaker. When the car which looked like an equal value while it was new, is breaking up, the Studebaker is breaking in.

That is why in Arizona—out where desert heat and rugged mountain trails test automobiles to the utmost—Studebaker sells double its normal proportion of cars. Every county in Arizona has bought an automobile for its sheriff has bought a Studebaker.

This coach is not a one year car. As a splendid example of the facts stated above, we offer the Standard Six Coach. To appreciate this car you must see it and ride in it. We urge you to do so immediately. It is called a coach, but is in reality a roomy five-passenger coupe.

It is a car that will give you faithful economical service. It is built to yield dependable, comfortable transportation for years and years.

Buy now—no more "yearly models!" This is the time of the year when men have hesitated to purchase an automobile, fearing that the car they bought in July would be made obsolete artificially by the announcement of new yearly models in August or September. Studebaker has discontinued the custom of presenting yearly models. Instead, Studebakers will be kept up to the minute in body styles and chassis design regardless of the calendar.

Come in NOW—and see this sturdy, dependable, one-profit Coach.

M. J. GOSS
Corner Fir and Adams

THIS IS A STUDEBAKER YEAR

GUARANTEE FUND LIFE 1924 Oregon Results

SYNOPSIS OF THE ANNUAL STATEMENT OF THE

Guarantee Fund Life Association.

of Omaha, in the state of Nebraska, on the 31st day of December, 1924, made to the Insurance Commissioner of the state of Oregon, pursuant to law:

Amount of capital stock paid up	None
Surplus	None
Total premium income for the year	\$2,704,127.34
Interest and dividends received during the year	395,945.58
Income from other sources	60,258.85
Received during the year	3,160,331.77
Total income	\$3,160,331.77

New Business: Guarantee fund led 59 of 66 competitors with total of \$2,377,500, in Oregon last year.

In Force: \$8,421,500, now carried by Oregon citizens. (Entered state in 1911.)

Premium Cost: \$150,409.76, or average of \$17.90 per \$1000.

Premium Savings: \$85,000. (competitors' average, \$10, greater).

Announcement Extraordinary

"Progress and Service" has been the watchword of the Guarantee Fund Life for a quarter of a century.

We Announce, in conformity with amended and broadened New York and Ohio insurance laws,

New Insurance Policies, embodying all the advantages that belong in Pure Life Insurance contracts, on and after July 1, 1925;

Reserve Basis: American Experience table of mortality and 4% Extended or Paid Up Insurance; Automatically available.

Old Age Benefit: After 70, the full Reserve available in cash.

Guarantees to Policy Holders: An emergency so extreme as to exhaust the mortality and surplus funds, and in addition, impair the Reserve, renders operative the privilege of collecting, during the emergency only, amounts necessary to maintain the Reserve, thus preventing insolvency and guaranteeing full payment to beneficiary.

Premiums: Lower than "Old Line" companies because of very much lesser Expense Loading and because of allowance of 4% instead of 3% on maintained Reserves.

Forms of Policies: (a) Ordinary Life, with level premiums; (b) Term, increasing premiums being yearly Renewable and Convertible without medical examination into any other form written; (c) Accumulation, designed to provide "Paid Up" or "Endowment" features—this excess Reserve at 4% and returnable, in life or death, in addition to face of policy; (d) Disability and Double Indemnity with standard rates and provisions, available with above policies.

New Maximums: Now retain \$25,000 on single risk, reinsuring amount carried in excess thereof up to \$100,000.

Intelligent Insurance Men will appreciate the invincibility of the improved plan and liberalized contracts of the Guarantee Fund Life—the buyers' appreciation is already evidenced by the total insurance now in force of more than \$161,000,000.

Liberal Commissions—Perpetual Renewals now available to capable men of good repute, in cities or towns of Wash. and Ore. Bradstreet or Dun reports are complete and unbiased. Ask your banker to show you one.

Competitors are the only source of any attempt, of which we know, to discredit plan or policy of the Guarantee Fund Life.

Prospective Buyers or Agents may have full information concerning Pure Protection—without obligation. Ask an agent.



FRANK SULLIVAN, Dist. Mgr., Portland, Ore.
HENRY C. PRUDHOMME, Dist. Mgr., 107 S. West Side Co., Portland.
SADE VAN BUREN, Dist. Mgr., La Grande, Ore.
WADE SLEEM, Dist. Mgr., Baker, Ore.

GEO. A. LOVEJOY, Western Mgr.
Phone BRoadway 2442 514 Pittock Block