

Highway and Auto Dope

AUTOMOBILE NEWS

Tourist Traffic and News

MT. HOOD LOOP TO BE OILED

Motorists Asked to Use Other Routes While the Work Is Done by State Highway Department.

Joe Dunne, president of the Oregon State Motor association, has issued a bulletin requesting the motorists to refrain from using the Mount Hood Loop road during the time it is being oiled

by the state highway department. The bulletin is full follows:

In order that Oregon's newest scenic drive, the wonderful Mt. Hood Loop, might be in the best possible shape for the summer touring season it has been deemed advisable by the state highway commission that the road be oiled. Oiling the road will not only mean more enjoyable traveling for the motorists but it will also protect the beautiful shrubbery along the route from becoming smothered with a coating of dust.

That the oiling of this road may be accomplished in the shortest possible time and with the best possible results, the motorist is requested to refrain from using the Mt. Hood Loop during the next two weeks, after which time it will be in excellent shape for travel. Those who must use

LIGHTS MAY NOT FUNCTION

Automobile Drivers Are Warned to Examine Their Own Lamps Before Criticizing Passing Motorists.

The recent passage of a new anti-bright law in Michigan has caused G. Clark Mather, chief engineer of the Pack-Detroit Motor Car Company to warn car owners in this regard.

Mather in a recent issue of the Page-Jewett Owner publication warns that not only bright lights but one light may be the cause of considerable inconvenience, if not trouble. An evening's drive was picked by Mather to illustrate his point in somewhat the following fashion:

"Doggone that guy! What's his idea of driving on the boulevard with his brights on. Wait 'til I give him a dose of his own medicine. And look at that! Just missed another kind of light but the last who only has one of his dimes burning."

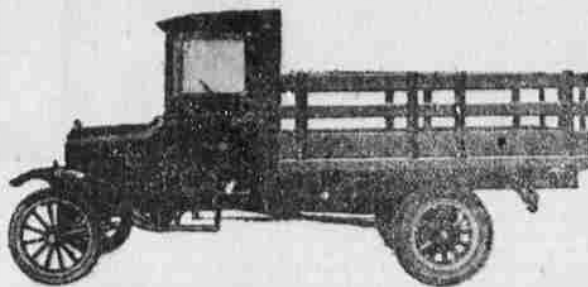
"And so your thoughts or your remarks go every evening that you drive your car about town. But how about your own lights? Oh, they are all right. Are you sure?"

"If so happened that we were driving our Jewett the other night alternately causing bright-light, one-light and no-light drivers and wondering why, in all things automotive, the traffic cops didn't

it are asked to drive slowly.

In order that the thousands of visitors who will wish to enjoy a trip over the Mt. Hood Loop during the next few weeks may gain the best possible impression of Oregon's scenic glory, let us cooperate with the highway commission so that the oiling process may be accomplished with all possible despatch.

Popular Truck Model



This is the Ford-built stake body and closed cab mounted on the Ford one-ton truck chassis which is rapidly growing in popularity. The body may also be used as a platform or, as a package unit for farmers, may be used with grain or cattle sides. Other Ford truck equipment includes the open express type body and the express body with screen sides and canopy top.

FORD TRUCK CELEBRATED

Next Week Designated as Ford Truck Week All over the U. S.; Perkins Motor Company to Participate.

Entrance of the Ford Motor Company into the manufacture of commercial bodies indicates a new and important advancement in this division of motor transportation since it shows that Ford is bringing into delivery and hauling services the same low cost and high value that has made the Ford passenger car the most popular in the world. The Ford truck chassis has long held the lead among light commercial vehicles and at present approximately 75 per cent of the one-ton trucks in use are Fords.

The business man or farmer who is interested in reducing hauling costs will have the opportunity this week of becoming fully acquainted with these Ford built truck bodies which, because of the economies of Ford quantity production, are offered at low prices.

Announcement is also made that the Perkins organization will be prepared to give demonstrations of any of the units and those interested are invited to enter their requests to the demonstration as early as possible.

The Ford-built combinations for the famous Ford one-ton truck chassis include the open express type, the express type with either screen sides and canopy top or with top alone, and the stake and platform body. This latter body also is of particular interest to the farmer and truck gardener, for it is adaptable to every agricultural hauling requirement as it may be used with either grain or cattle sides. With stakes it provides unusual space for carrying garden produce.

A closed cab, adaptable for use with any of these bodies, also is provided and has grown greatly in popularity since its introduction. It is of all-steel construction, roomy, with removable panels in the back and affords complete protection for the driver in inclement weather, with ample ventilating facilities.

The displays also will include the new pick-up body, which is mounted on the rear of the Ford runabout, providing a light delivery car which meets a variety of requirements where quick delivery is an important factor.

put some of these points in the house-row. As we pulled into the alley, we turned on our lights, a wee always do, to better see our way. On the garage door our lights showed up time, as usual, lighting up the whole building.

"Inside the garage, we snapped the light switch. It clicked over too far. The dimes went on—or to be more correct, the dim went on, for only one circle of light showed on the garage wall. We could not believe our eyes. Several more snaps of the switch drove home the horrid truth. Sheepishly, we admitted we had been driving, we know not how many evenings, with only one light.

"Possibly a large share of the one-light drivers do not know of the defect in their lighting system. On brightly lighted streets it is hard to tell from the driver's seat whether both dimes are working or not. Many of the bright-lighters may be burning their dimes. Their head lamps may merely be tilted up and throwing blinding beams of light into the eyes of passing motorists unbeknown to them.

"Be safe. Check up on your lights. See that their focus conforms to the laws of your state. This may save you a fine or from leaving an accident. Your dealer or the local automobile club can furnish you with the correct information on how high lights can legally cast their beams and tell you how to make them conform with the law."

NEW TYPE TIRES ARE IMPROVEMENT ON EARLY DESIGNS

"An important change has recently taken place in the method of building balloon tires," is the announcement of Avery Harrison, dealer in United States tires. "The new feature is called the 'low-pressure tread.'"

"If you were one of the first users of balloon tires, you probably found that the tread of the tire wore through too quickly in spots. In some places there was hardly any wear, but in others the tread wore away about three times as quickly as it ought to.

"The engineers of the United States Rubber Company have made an exhaustive study of the causes for this undue wear, and have brought out a flat low-pressure tread as a solution of the problem. They found that if the tread of a balloon tire had a rounded contour—as in the regulation high pressure tire—the peculiar shape that the tire took when in use caused the tread to wear chiefly in two bands, one on each side of the center of the tire.

"By devising a wide, flat tread for low-pressure tires they have made it possible for the weight of the load to rest equally on the whole tread surface, with the result that the wear is even and the life of the tire brought up to normal.

"The flat, low-pressure tread permits a balloon tire to function at its best and to give the kind of service it is designed to give. There is no need to inflate it above the prescribed figure, it minimizes tread distortion and tread movement, it gives much better traction, and makes steering easier."

PAIGE BROUGHAM IS DISPLAYED BY HARRIS FRENCH

One of the most interesting arrivals of the week was the right Paige four door brougham displayed by Harris French, Paige and Jewett dealer.

In the vernacular of the trade the Paige four door is "some thing." Because of its modern price the brougham has made it possible for more buyers than ever before to enjoy the superior comfort, satisfaction and long run economy of a fine car.

It is said to be every bit as good as it looks. The body is a combination of steel and aluminum over stout hardwood framing. Body joints are mortised and tenoned, screw fastened and girths besides being reinforced by heavy metal braces. Upholstery is of genuine mohair and in every detail the car is up to exacting Paige standards.

NEW DEALER IS ESTABLISHED IN SALES QUARTERS

Leo French, local Chrysler and Franklin dealer not well established in his new quarters in the Hohnkamp Building this week, and has already completed several sales.

The Chrysler four, described by Time as a "little winged bullet," as well as the original Chrysler Six models are being shown. A Chrysler six with a special paint job in blue and several other extras is being featured by the French salesman this week.

Mr. French intends to make a feature of the servicing of Chrysler and Franklin automobiles, and to this end will have an expert service man on hand at all times.

Here's One Dirty Crack All Right!

Bill Wright, head of Universal's serial department, has an auto whose looks are not in keeping with its performance. In other words, Bill's car looks like the last rose of summer, but the fact remains that it always runs, which is more than can be said of many of the dotted-up cars which grace the boulevards.

Bill was proud of the car until he tried to sell it. "My heavens!" exclaimed the prospective purchaser, "is that a family heirloom?" "Heirloom? No!" asserted Bill. "That car has been driven only 30,000 miles!" "Sure! But how far has it been towed?"—Los Angeles Times.

TOMMY MILTON BUYS TWO NEW BUICK AUTOS

Tommy Milton, premier race driver of the country, and the only man to ever have won the Indianapolis speedway classic twice, has just purchased two new Buicks, one for himself and one for his father.

The two cars were sold by a Los Angeles Buick dealer and Milton's was delivered to him at Indianapolis a few days ago.

It is an interesting fact, in this connection that for the 13th consecutive year a car powered by a valve-in-head motor, such as has been made famous by Buick, has won the races at Indianapolis.

Even off the track, a race driver likes the feel of power, though he may never use it, in his own personal car, as attested by Milton's recent acquisition of a Buick.

Commenting on his reasons for purchasing a Buick for his own use, Tommy Milton said:

"For the 12th consecutive year a Buick car powered by a valve-in-head motor has won the races at Indianapolis, the classic of the world."

"As in past years, this type of

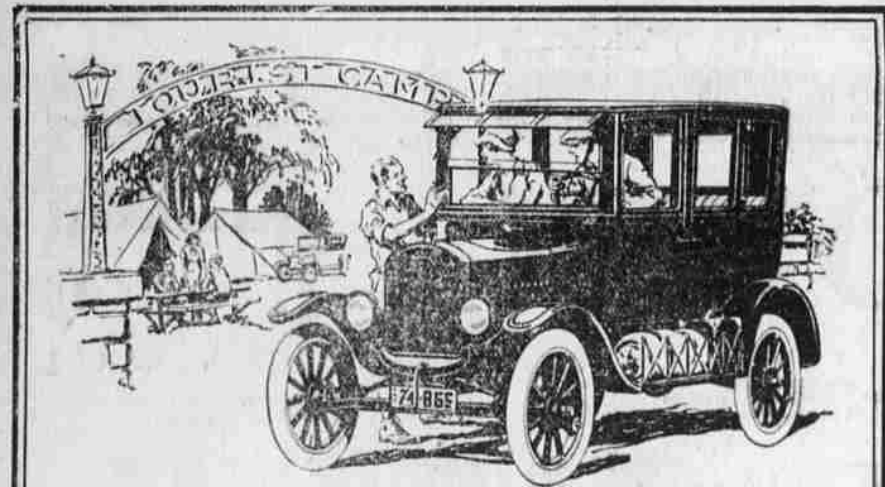
motor has proved it possessed the greatest power and the greatest speed. Because of its unvarying success on the winning cars, the valve-in-head racing engine has come to be universally accepted for all such speed classics.

"It is a matter of record that Buick engineers were the first to recognize the superiority of the valve-in-head engine," explains E. T. Strong, general sales manager of the Buick Motor Co., "and Buick has concentrated on the valve-in-head since 1904. There are more than 1,000,000 Buick valve-in-head cars in use today."



Camp Equipment

TENTS - CANVAS COVERS - WATER BAGS
BEDDING ROLLS
We have it or we can make it.
Snyder and McKennon



The Tourist Camps Invite You!

Thousands of them, hospitable and friendly, play a big part in the vacation joys of thousands of families every year.

Take advantage now of this interesting, economical way to travel! Get into your Ford and go—far away from the every-day haunts and the working grind! All the family will enjoy the outing; everyone will be healthier, happier and better for a change of scene and life in the open.

No other car requires so small an investment as the Ford; none offers you such value for your money.



Fordor Sedan \$660
F. O. B. Detroit

SEE ANY AUTHORIZED FORD DEALER OR MAIL THIS COUPON

Please tell me how I can secure a Ford Car on easy payments:

Name _____
Address _____
City _____ State _____

Mail this coupon to
Ford Motor Company
Detroit

GOOD YEAR Service Station

GOOD YEAR Means Good Wear

When you step out to buy a tire—and much as we hate to do it, it's got to be done once in a while—what do you want?

Of course, you'd like to rub a lamp, or make a wish, or have some good fairy appear, and slip a nice new tire on the rim for nothing.

But, unfortunately, these things only happen in our dreams.

What you want is a tire that will get you back on the road again and keep you going for a long, long time.

So, as long as you've got to buy a tire, you want something good and you want it at the right price.

The next time you are up against the sad necessity of buying a tire—call us up and we'll sell you a Goodyear and make you glad to buy it.

W. H. Bohnenkamp Co.

Removing Your Tire Burden

When a man can buy the same high quality of tires here (as Ajax and C. T. C. brands) that he can any spot under the sun—and get COMPLETE PROTECTION for one year on ANY damage of ANY kind to those tires, it's no wonder that particular owners insist on enjoying Playle's tire service.

If you expect to need any new tires soon, drop in—let us talk it over with you.

Playle Oil Co.

Texaco Gas and Oils—Ajax and C. T. C. Protected Tires
Car Washing, Etc.