

Highway and Auto Dope

# AUTOMOBILE NEWS

Traffic and Tourist News

## TO CELEBRATE ROAD OPENING

On June 10 at Wilson, Arkansas there will be staged a monstrous road demonstration celebrating the opening of the Mississippi County Arkansas section of the Mississippi River highway. This highway is one of the most important north and south arteries of the chain of our great national highway system.

This section will be one of the finest roads in the United States being 30 feet wide, with a 20 foot concrete base, Warrenite top, with 5 foot dirt shoulders on each side. The National Motorists' association is particularly grateful to those who have been instrumental for the early completion of this link of road inasmuch as the gigantic motorcade to be conducted by this association in the fall will follow the route of the Mississippi river scenic highway through the states of Missouri and Arkansas.

The celebration of the road opening will be staged on a huge scale. Preparations are being made for an immense old-fashioned barbecue. It is expected that at least 15,000 people will participate in this barbecue for which the south is internationally famous. An invitation is extended to the entire world to join in this celebration.

Ex-Governor Frank B. Lowden

of Illinois will be one of the principal speakers of the day. A monstrous automobile parade of beautiful floats will be another feature of the celebration. White and green will predominate inasmuch as these will be the official road celebration colors.

The automobile parades will start from the from the Missouri state line and the Crittenden county line at 8 a. m. sharp and it is expected that the celebration will last long into the night.

Early tourists to Florida and Mississippi should take advantage of this opening to purchase of a real southern barbecue so that they can advise their friends at home as to what can be expected by the participants of the S. M. A. motorcade in October, to which the entire world is also invited.

The objective of the General Motors export organizations is to increase General Motors' percentage of the available business in every market or territory of the world. These organizations have the responsibility of placing General Motors cars in every competitive position in every market. In choosing our attainment of this objective, each market is analyzed to discover the rate at which registrations of motor cars in that market are increasing; the registrations of General Motors cars in that market must increase at a faster rate than the rate of all cars being registered.

Remember that a pedestrian has the right to cross the street at the crossing.

## First to Reach Government Camp This Year



## MOTOR ROUTE IS OPENED

Summer tourists have been given a new and fast motor car route into the Canadian wilderness in and near Winnipeg by a "dawn till dusk" run at 41 miles an hour from Winnipeg to Minnetonka, sponsored by Dominion and Minnesota officials and the Winnipeg Tribune.

Mayor Ralph Webb of Winnipeg personally brought Canada's welcome to all America, riding in the official touring car which set the new daylight time record.

The 484 mile ribbon of excellent highway, flowing over fertile plains to the Canadian province from Minneapolis, now covered in a few minutes less than 12 hours, was first known as the Red River trail in the old days when prairie schooners required a little less than a month to reach the portals of old Fort Garry.

Aside from the neighborly relations promoted by the trip between the northern province and Minnesota's cities, the feat brings to painted attention the splendid opportunity this route provides for Americans to use by entering the open places, the lakes and woods of Canada for summer touring where scenery, inspiring climate and excellent fishing await the traveler.

The route, running south from Winnipeg, runs through Morris, Emerson, Hilloek, Warren, Crookston, Erskine, Mahanomen, Detroit, Wadena, Long Prairie, Little Falls, St. Cloud and Minneapolis.

Mayors of all these cities lifted

### New German Motor.

Compressor motors are now used on a few new types of automobiles in Germany. The result of the compressor's action is an instant additional power impulse, amounting to more than 50 per cent of the normal motor performance. For instance, climbing a steep hill with full power and a motor slowly decreasing to revolutions, a compressor equipped car will suddenly leap forward with a roar and pick up new speed after the normal maximum limit has been reached. This compressor attachment is similar to the supercharger as used for high altitude airplanes. Compressed air is used in the intake manifold and results in a supercharged fuel air feeding the cylinders.

Pedestrians should always look to the left first before stepping on the curb.



## RACINE MULTI MILE TIRES

La Grande Filling Station  
Wins by Fair Dealing. J. F. Heasty, Prop.

the speed limits for the caravan and provided escorts of motorcycle police and fire equipment to help establish the 12-hour record.

G. L. Matland pulled his Studebaker Big Six away from the Winnipeg city hall at 4:55 o'clock in the morning. In the official car with him were Mayor Webb, Ios Parkhill, a world war aviator, as well as driver, A. W. McCurdy of the Winnipeg Tribune and B. W. Sewell, a Minnesota highway superintendent.

Eleven cars strung out behind Matland as the cavalcade set out at 50 miles an hour for Minnetonka, 500 miles away, to establish new international history and open the new international highway.

The caravan was held up for 65 minutes at one place where a broken gas line in one of the cars was repaired. One puncture, a wait for gasoline and a heavy rainstorm worked further delay but the Big Studebaker drew up in front of Minneapolis city hall to bring greetings to Ios, Gen. George E. Leuch, its mayor, at 4:01 p. m.

Out of the twelve cars starting, the Studebaker and two others kept the schedule. Another got in at 9 o'clock. Three others made it

by midnight. One turned over and burned.

Actual running time of 10 hours, 26 minutes, affords an average actual speed of 46.5 miles an hour, indicative of the fine character of this new roadway into Canada which is now available for American tourists as soon as the warmer weather starts the summer trek to the woods and fields.

### HOW TO SYPHON RADIATOR

When you have given up hope of opening up the drain plug under the radiator there is a way to empty out the radiator water so that you can add a sufficient amount of alcohol to prevent freezing. To move the strainer in the radiator neck, insert a rubber tube as far as it will go and tap the other end of it over the lip of an empty oil can. Be sure to fill up the radiator with water if the level is not high enough. The starting suction through the tube with the pump action of the gun a great deal of water will siphon out.

Stay in the traffic line, you will save time and a possible fine.

## Ford Owners-- Attention!

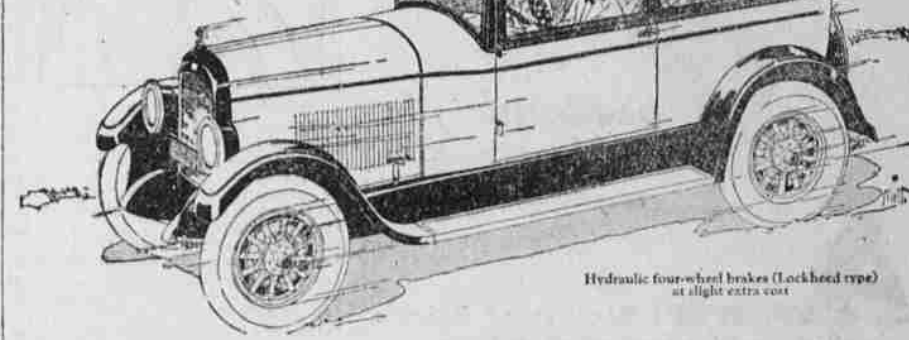
O. M. Huff (former owner of the Economy Garage) and Jay Shaw are opening up a FORD REPAIR SHOP in the building occupied by the Oregon Tire & Battery Co., 107 Fir Street.

Get Our Prices--We Can Save You Money

# Jewett Coach

## \$1260

F. O. B. Detroit, tax extra



Hydraulic four-wheel brakes (lockheed type) at slight extra cost

## Superb quality--new beauty--flashing action!

Through skillful, studied building, Jewett has produced the finest Coach ever designed.

Already, thousands have bought the Jewett Coach because of its superb quality.

### It's a Conspicuous Beauty

Ask your wife to judge Jewett Coach beauty--its refreshing, colorful, permanent lacquer finish, its smart double belt moulding, its gracefully rounded back.

These are features that make custom-built cars individual and costly--and give Jewett Coach its harmonious beauty.

Jewett has introduced a new type of upholstery in the Coach. It's an ideal combination of rich beauty and wearing quality that has long been necessary in a Coach--but never a reality until Jewett Coach appeared.

To drive Jewett Coach is to experience an utterly new and amazing type

of motor carriage. You have never felt such a power thrill. From 2 miles an hour, without bucking, to 60 in less than a city block--in high gear. Yes--Jewett Coach will outperform any car within \$500 of its price.

### Its Performance Lasts!

A silent chain drives pump and timing shafts. Chain wear is automatically taken up as it occurs. Full, high-pressure oiling guards every bearing against even ordinary wear.

A new, heavy, counterbalanced crankshaft eliminates vibration. From the first sweet trip until your speedometer clicks the fifty-thousandth mile and more--Jewett motor will remain smooth--silent--satisfying.

Reasons enough for Jewett's Coach leadership. It's the greatest Jewett ever built--with riding, steering, driving qualities that will amaze you. See Jewett Coach. Drive it yourself before you buy!



HARRIS FRENCH MOTOR CO.  
1115 Washington Ave. Phone 467-R

## USED CARS

All Guaranteed

- One--1923 Buick "6" Touring
- One--1924 Ford Touring
- One--1923 " " Touring
- One--1924 " " Coupe
- One--1919 " " Touring
- One--1919 Maxwell Touring
- One--Two-Ton Service Truck

BARGAINS--EASY TERMS

### Gettings & Hanks

## Watch'er Climb

The world stands astonished at the amazing power performance of the new Star Car, with the Million Dollar Motor.

Hills melt before it. Fast pickup--5 to 25 miles per hour in 4 1/2 seconds. Pep, power! Abundant power for every need--and more--20% more power.

Never before such a motor in a car priced so low.

See this car today. Test it any way you choose. Take it on any hill--watch it climb. Check the 101 value features against any car. It is the greatest buy in the world today.

The 1925 Star Sport Touring. The car for the millions with the Million Dollar Motor.

All 1925 Star Cars have these very High-Grade Mechanical Features  
Full Force Feed Lubrication  
Four-Wheel Brakes--Tubular Backbone--Dry Disc Clutch--Hollow Camshaft

The Star Car  
TODAY  
TOMORROW'S CAR

## J. P. MORELOCK

THE GREATEST VALUE BUY IN THE WORLD

## Looking Ahead

It might pay us--for a season--to sell a tire of less distinction and quality than RACINE.

But it would pay us only for a season, and we expect to be in business a great deal longer than that.

## RACINE MULTI MILE TIRES

La Grande Filling Station  
Wins by Fair Dealing. J. F. Heasty, Prop.

## Buy The Safety Eastern Oil Insures!

The cylinder oil you put in your engine is the most important part of its life. Only the fine body and peculiar lubricating qualities of Eastern oil can give the motor efficiency your car deserves. Veltex fills every requirement--be safe next time with VELTEX OIL.

## You Can Buy Veltex At These Stations

<b>LA GRANDE:</b> La Grande Filling Station Square Deal Filling Station Auto Electric Service Co. Oregon Tire and Battery Co. L. C. Smith Dodge Garage Jennings & Shumate Orchard Filling Station Gibbons Filling Station	<b>UNION:</b> Oregon Trail Garage Rex Gamble Brown's Garage
<b>ELGIN:</b> E. F. Hug & Co.	<b>IMBLER:</b> Andrews Bros. A. Page & Son
<b>SUMMERVILLE:</b> J. J. Wagner	<b>ALICEI:</b> Bryant & Bryant J. Rossen
<b>PALMER JUNCTION:</b> Frank Baker	<b>COVE:</b> W. F. Breshears Leonard Towle

## FLETCHER OIL COMPANY

T. R. MAXWELL, Mgr.--A HOME COMPANY