



# Builders' Guide

## HINTS ON BUILDING



### PERMIT LIST OF WEEK HIGH

Building permits in La Grande for the week ending Friday, May 29th, maintained a high figure. Six permits were issued involving estimated expenditures totalling \$17,500.

Repairing residences accounted for \$5000. Two smaller business buildings and one large brick building on Adams avenue to be erected by Ulrich Lottin at an estimated cost of \$5000 were included in the permit list.

The Standard Oil company will build a one-story steel and concrete rest room and service station on Adams avenue between Fourth and Third streets at a cost to be \$1100. Claud C. Pratt will erect a one-story frame building to be used as a warehouse, on Cove between Pennsylvania and O. Estimated cost is figured at \$1500.

May 25 was the heaviest day of the week in number of permits. Three were issued amounting to \$2800.

#### U. OF O. RANKS SECOND

The University of Oregon ranks second among twenty-two leading American Universities and colleges in circulation of library books for home use for the year 1922-23, according to a survey made by M. H. Douglas, University librarian, Oregon with an enrollment on the Eugene campus of 2654 students had a circulation of 57,952 books, or a per capita of 21.76. Princeton holds first place with an enrollment of 2448 students, and a circulation of 59,923, giving this institution a per capita of 23.95.

This survey includes the following institutions: University of Michigan, Iowa State College, Dartmouth College, Purdue University,

### Permits

May 25—Permit issued to J. Watson to repair a two story building on Spring avenue between Third and Fourth streets at an estimated cost of \$5000.

May 26—C. E. Johnson, owner, received a permit to alter and repair a two-story dwelling on M between Eighth and Ninth. Estimated cost \$1000.

May 26—Permit issued to Claud C. Pratt to erect a one-story frame building, to be used as a warehouse, on Cove between Pennsylvania and O. Estimated cost \$1500.

May 28—Permit issued to Ulrich Lottin to erect a one-story brick business building on lots 25, 29, block 111, Chaplin's addition, fronting on Adams avenue between E. and Glenwood. Estimated cost to be \$5000.

May 29—Permit issued to Standard Oil company to erect a one-story steel and concrete rest room and service station on Adams between Fourth and Third. Estimated cost \$1100.

Syracuse University, Missouri University, North Dakota University, Oregon Agricultural College, Washington University (St. Louis), Northwestern University, Brown University, Harvard University, Yale University, Princeton University, Cornell University, University of Chicago, University of California, University of Illinois, Kansas State Agricultural College, Stanford University, University of Washington, and University of Oregon.

News from Paris says men are the best dressmakers. It does take a man to dress a woman.

### Wall Treatment Important



If a home is to radiate attractiveness and agreeableness, the walls must be in harmony with the personality, furnishings and size of each room. Walls without charm can easily mar the effect of an otherwise beautifully arranged room. The room sketched above, which is Italian in treatment, calls for rough plaster or mottled walls in order to be in harmony with the atmosphere. This may be achieved by painting the unfinished surface or, if the walls are smooth, by stippling them with a flat tone paint. The ceiling is similarly treated and beams are added which are painted with an oak floorlac to match the woodwork and floor. The walls can be finished in a warm cream tone which accords with the oak furniture and the Italian red velvet upholstery. A touch of color is introduced by hanging a tapestry panel over the fireplace. The size of the room decides how fine or coarse the wall textures may be. A fine wall decoration in a large room will make it appear bare and larger, while a prominent decoration in the small room makes it look crowded and smaller. It is

### 'BACK YARD' LANDSCAPING

The oft-repeated advice that a flower garden is a border to frame a lawn may be disregarded in the 50-foot lot. In the first place, there isn't room enough in the back-yard garden, whether vegetable or flower garden, to provide a lawn worth framing. Besides, the front yard offers sufficient display of lawn as the property is usually laid out.

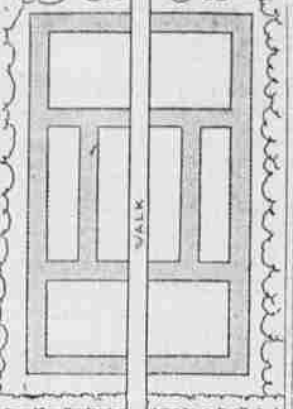
It is a very effective plan to make the entire back yard a flower garden of formal plan with the lawn feature restricted to grass paths from two to three feet wide among the beds. Such a flower garden covering the entire back yard area of about 50 square feet is a very pleasing and handsome picture and quite as effective as designs which call for a pocket handkerchief lawn in the center.

A flower lover will be amazed at the number of plants such a garden will accommodate even with a border planting of shrubbery. There is opportunity for a vast deal of color scheming and arranging the plants in order to provide a succession of bloom from spring until fall.

Utilizing the entire space given a series of beds either in circular, rectangular or octagonal patterns if desired, which will give the ingenuity of the owner full play. This will be needed in arranging groups of perennials in the bays between the shrubs.

A plan of grouping which will give a succession might be based

this—a plant blooming in May, June, July, August and September to a group and a series of such groups. Or it might be planned thus by months: pyrethrum, delphinium, Shasta daisy, phlox, per-



LAY OUT THE BACK YARD INTO A SERIES OF SMALL BEDS. FOLLOW A PLAN OF GROUP PLANTING WHICH WILL GIVE A SUCCESSION OF BLOOM.

ennial aster, and add a chrysanthemum. These six perennials could be arranged in groups to give a progression about the boundary beds. Or groups of two or three plants of each in general groups to be altered would give a continuous display all season. This could be supplemented by gladiolus bulbs.

The paths of glory lead but to the gray hair.

### 400,000 Homes Erected Annually in America

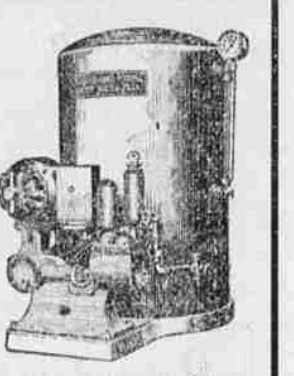
WASHINGTON (Special)—About 400,000 houses are built annually in the United States and of this number 75 per cent are lumber built with all containing important quantities of lumber.

The total lumber bill is set at about \$1,500,000,000.

#### ASHLAND DEBATE CHAMP

University of Oregon, Eugene, Ore. (Special)—Ashland high school is the 1925 holder of the Oregon state high school debating championship, having won this honor by defeating the McLoughlin Union high school of Milton-Freewater in the final debate. At the University of Oregon, Ashland took the championship by vote of two to one, and gained possession for one year of the De Cou cup, emblematic of the state title.

The winning team, Bernard Joy and Marion Leach, debated the negative of the question, "Resolved that the Referendum is a Desirable Feature of Representative Government." Roy Herndon and Chester Balcock upheld the affirmative for the McLoughlin Union high school.



### Fairbanks-Morse Home Water Plant

All you have to do is turn the faucet—you have running water, both hot and cold. Cost of operation is very low.

Nate Zweifel

**Blue Mountain Oregon Lumber**  
We Have Just What You Want in LUMBER, SASH AND DOORS AND SHINGLES. It will pay you to investigate our prices.

**Bowman-Hicks Lumber Company**  
MAIN 8  
CHAIN AND BOX WOOD—PHONE MAIN 547  
J. L. MURPHY

**\$25.00 DOWN PLUS FREIGHT AND INSTALLATION— PUTS IN YOUR HOME A SUNBEAM PIPE OR PIPELESS FURNACE**

Only \$25.00 down puts this better and more efficient heating system in your home. Learn the Comforts, the Convenience and real Economy of Sunbeam Warm-Air Heating. Learn how easy it is to install and to own a permanent heating plant. Your home deserves a Sunbeam.

**Fred Spaeth**  
Plumbing, Heating, Sheet Metal Work  
108 Fir St. Phone M-586

**Your ironing board a breakfast table.**  
A combination ironing board and table is one of the 40 unique articles of

**ELECTRIC OUTLETS**  
For all purposes are an added convenience to any home. Outlets for the vacuum cleaner, toaster, curling iron, floor lamps—conveniently located and not interfering with the lighting circuits—can be put in your home. If your house is already wired you have no doubt many times wished for some additional outlets. Don't put it off any longer. You can have it done now at small expense. Plan the wiring of that new home with care. Be sure to put in a complete job.

**H. & S. ELECTRIC CO.**  
Sommer Hotel Bldg. Phone 393-W

### It Pays to Construct Full-Size Basements

The basement of any building should be the full size of the building foundation proper, basements in all residences should be 7 feet deep under the main floor joist, and in this vicinity should be from 24 to 26 inches up from the finish yard grade, however this height depends entirely on the type of house that you are going to build. Some houses do not look so well when they are set up off the ground, but this does not regulate the depth of the basement at all. Basements under industrial buildings have to be made to conform with the business that will occupy the building.

The basement of a residence is the most reasonable of any part of the house in cost, and the half basements do not, in any way, save enough on the construction of a building to justify cutting them down. All basements should be well lighted and well ventilated, a person can now buy steel basement sash that is less in cost installed than to buy and make wood frames and windows, and steel sashes do not deteriorate in any way, will not shrink or swell from moisture.

### Softwood Mills Show Gains During Week

A gain in new business was reported by 377 of the principal softwood mills during the week ended May 16, their orders equaling their production, while shipments were 98 percent of it. Low prices still make for unsatisfactory conditions, but in the trade the opinion seems to be gaining strength, says the American Lumberman, Chicago, that as the mills become adjusted to quicker transportation and smaller retail stocks, they will refrain from forcing lumber on the market faster than it can go into consumption.

The southern pine mills had orders for 2-1/3 percent more than they produced, but transit cars from smaller mills have had a weakening influence, and have caused slight declines in common boards and dimension, though upper grades and such items as flooring are fairly firm. The west coast mills booked orders for 15 percent more than they cut, but their operations are curtailed, for foreign business is still lacking and domestic prices have declined to an unprofitable level. Coast cutting schedules are planned for a shut-down, and mill stocks are being reduced. Many logging camps are now idle, and each week others are closing down, and will probably remain inactive during the period of fire hazard, or until about September. Retailers and industrial users are placing only small orders for softwoods, and it is unlikely there will be much change in this policy until good crop returns are assured, and curtailed lumber production results in a general upward movement of prices.

Total hardwood demand from the large industrial consuming groups is of fair proportions and has been increasing. The southern producers are less aggressive in their offerings, while inquiries being received by them and by northern operators show some increase. Though prices are still low, market developments indicate that the mills may soon be able to secure better returns.

**DEERLESS Built-in Furniture**  
that you will see in our exhibit. Visit it if you are planning to build or remodel. Send or call for this "Book of Built-in Furniture."

**La Grande Construction Co.**  
News of Walla Walla, Wash., always reminds us once we were swimming in muddy water.

### Efficiency Experts Prepare To Feed 8,000 Free Masons

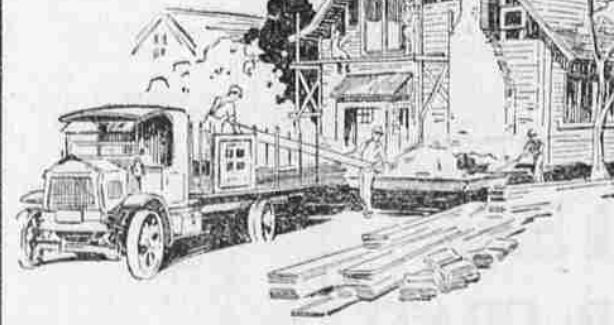
LONDON, (AP)—An office-fashioned after a battleship's conning tower is to be used for the direction of a banquet August 8, when 8,000 Free Masons in their regalia will be entertained by the United Grand Lodge of England, with the Duke of Connaught, presiding.

It is claimed that this is the greatest number of persons who will ever be taken care of at one time, at an elaborate function which is to be a banquet in every sense of the word. There are to be seven kitchens, several hundred chefs and assistants, and 1,500 girls as waitresses. The working arrangements will be controlled from the conning tower, electrically fitted, and containing means by which instructions may be conveyed to any part of the great hall to keep things running smoothly. More than 50,000 plates and dishes will be required, 24,000 glasses and 100,000 pieces of cutlery. The largest number ever served in London previously was in 1922, when 7,000 persons sat down at a luncheon.

### PAINT, OIL, ENAMEL, STAINS, VARNISH BRUSHES, ETC.

### Bugg Paint Co.

The Quality Paint Store  
1. O. O. F. Bldg., Entrance on Washington Ave.



### You Will Find At Our Retail Yard Everything Needed To Build A Home

LUMBER—ALL GRADES—ALL PRICES  
SHINGLES AND ROOFING  
CEMENT—PLASTER  
PAINTS—OILS  
BUILDERS' HARDWARE  
Ask Us for Estimates

### Grande Ronde Lumber Co.

**MORLEY & McLEAN**  
Painting Contractors  
Painting, Papering  
Interior Decorating  
Phone 317-B La Grande

We need a law as an ice man can't mash strawberries.  
Some stenographers can't spell much better than their bosses.

If a man can start a lumber yard and sell the stuff when times are hard, it's not him that draws the trade but the prices that the fellow made.  
House Paint, \$2.50 per gallon.  
Boiled Linseed Oil, \$1.45 per gallon.  
Cedar Shingles, \$2.20 and \$3.00.  
Kiln-dried Flooring, \$29.00 per M. and up.

**Claude C. Pratt Lumber Co.**  
"The Poor Man's Friend"  
1920. Foundry. PHONE 248 W  
No Sunday Business