

Building & Improvement

BUILDING HERE REMAINS BRISK

During the month of April La Grande building permits reached a total of \$17,597, slightly less than the April figure in 1924 and a considerable drop from the March figure this year, which reached \$27,000.

La Grande permits, however, compared favorably with those issued in Walla Walla which had \$12,650; Cotton, Cal., with \$11,500,

and several other cities. Oregon Building High Oregon building for April showed a total of \$4,231,542 for six cities—Astoria, Eugene, Klamath Falls, La Grande, Portland and Salem. Last year in April the permits aggregated \$3,642,875. In March this year they were \$5,174,082.

From a percentage angle, in Oregon, six cities report an aggregate which is 13 per cent less than that of March but 16 per cent above the total of last April. 53 per cent above that of April, 1923 and 102 per cent above the April total of 1922. The S. W. Strass & Co. survey shows:

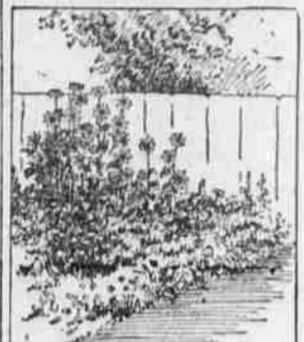
Portland continued to rank high on the coast in building permits during April, issuing \$4,493,300, a figure which has been exceeded

BRIGHTENING UP CORNERS

If there has been no opportunity or if opportunity has been neglected to lay out the back yard into an ornamental design more or less elaborate to suit the taste of the owner, the neglect can be remedied in great part by corner plantings.

Planting in the corners with tall-growing annuals as a few perennials will be a start at a design and will help to form a frame for the grass plot.

Corner beans are the most satisfactory annuals for quick effect. They



A PLANTING OF QUICK GROWING ANNUALS WILL BRIGHTEN A CORNER OF THE BACKYARD

will assist in hiding outbuildings in a hurry.

The annual sunflowers of the cucumber leaved type, catalogued as Helianthus cucumerifolius, will make a fine group and furnish quantities of miniature and delicate sunflowers ranging from pale yellow to orange for cutting during the summer. Cosmos will fill a corner with a feathery mass of foliage and in mid and late summer will be decked with myriads of handsome white, pink, rose and crimson flowers, fine for bouquets.

Plant early flowering types of cosmos now.

For a sunny corner in soil only fairly rich, wonderful effect can be produced by a few of the fine new types of dahlias. They grow to a height of six feet or more, according to variety, with clean shining foliage and in September produce wonderful bloom, ranging from great fluffs the size of your head in some of the advanced types down to little pompoms two inches through.

The dahlia is now the queen of the autumn and no garden should be without a few specimens. Plants are on sale later in the season and the dry tubers can be secured now. There is no hurry about putting them in as any time up till June will do.

Spider plant, Cleome, is another tall, fast growing annual which makes fine clumps and for a shady corner nothing is better than the flowering tobacco, Nicotiana glauca and its types being most effective. The white variety with its spiky stars brightens up a dim corner at dusk wonderfully.

Permits

May 4—A permit was issued to H. W. Cummings to alter and repair his home on O between First and Second streets. The estimated cost of the work is \$2000.

May 5—A permit was issued to Walter H. Parker to erect a cement block building to be used as a garage by Margaret Parker, widow, on Y between Depot and Birch. Estimated cost is \$5000.

May 6—A permit was issued to Will Kottner to put up a building on Y between Greenwood and Spruce. Estimated cost \$1000.

May 6—D. N. McClelland secured a permit for altering and repairing a two story dwelling on Jefferson between Cedar and Oak streets. The work will require an expenditure of \$1000.

May 7—A permit was issued at the city offices to Grant Sturtevant to alter and repair a dwelling on Z between Greenwood and Spruce at an estimated cost of \$500.

May 7—A permit was issued to Harry Meyers to alter and repair a one and one-half story building on O between Seventh and Eighth streets. Estimated cost \$400.

Lumber Demand Shows Expansion in Week

Unfilled orders of \$74 of the principal outwood producing mills of the country April 25 were larger than at this time a year ago, and during the preceding week they had shipped 192 per cent and booked orders for 191 per cent of their output. These figures indicate, says the American Lumberman, Chicago, that demand is expanding and bringing the industry into stronger position.

The most fir mills have a good demand from the industry west, but the cargo markets, foreign and domestic (California and Atlantic coast) have been tight buyers. During the week of April 25, however, domestic cargo bookings increased 30 per cent. Unsettled lumber prices and searage rates had been partly responsible for much buying by the Orient and Australia. The mills export organization has been refusing to consider concessions, but is now submitting form offers to its members, while it is reported that the holdings off by buyers has brought easier vessel space quotations for future movement. A revival in buying by any of these cargo markets will firm up fir prices. During the week mentioned, the fir mills booked orders for 13 per cent more than they produced.

INSTALLS BURNER

An automatic oil burner has been installed by Mrs. J. A. Russell at 1502 Third street.

HAS NEW LIGHT PLANT

Gilbert Hunter, of Island City, has installed a new Kohler automatic light plant and water system.

REFRIGERATION PLANT IN

C. C. Pennington has installed a new refrigeration system in his residence.

Many Things to Consider In Building A Residence

(By Charles H. Miller)

The building of a home of your own will develop in you an added interest in your family, your community and your country such as perhaps you have never felt before.

Since the beginning of history, protection from the elements, was made in a cave among the rocks, a mud hut, igloo, wigwag, tent or cabin, and these shelters were known among the people as homes, even today among the savages, each family has a place of abode, and the history of civilization proves that in the home-owning aspirations of its citizens lie the hopes of the nation. And no nation can be enduringly great whose majority does not consist of home-owners. There is an old legend that we all learned when youngsters in school that said, "The magic rights of property turned Holland's sand to gold." It is sound economics to assert that those home-owning dreams furnish the most solid foundation for a nation's credit.

Be Sure of Site

Inasmuch as a home is produced by the combined use of land, money, labor and materials, the first step for a home builder to take is to seek an adequate site and consider it from all viewpoints, economical, social and aesthetic, for the choice of location is of great importance.

No person should commence the building of a home without having adopted a well and fully matured plan, including all the details of its internal arrangement, the size and situation of the various rooms, halls, closets, etc., and the exact location of the stairs, chimneys, doors and windows. If these details are not followed carefully, serious and expensive mistakes are almost sure to be made, and money wasted in needless alterations and changes. If you do not know what you want, you are not prepared to build. Adopt no plan hastily, it should be carefully studied, examined in every way and looked at from every viewpoint.

Many Things to Consider

In the first place your home must be adapted to the site you have chosen, for a plan may be admirable for itself, and yet very unsuitable for every site. If the plan is adopted first, the site must be selected in accordance with the plan.

Consider first what accommodations are needed and essential to your comfort, and then study the conveniences and appliances you can afford to add to the plan. At the same time you must realize that the three elements, which enter any building problem are cost, dimensions and material. You can fix upon any two and the third will determine itself.

Plan with a conscientious regard for the proper aspect of the various rooms, and for the conservation of steps, which in the furnishing of housekeeping utensils, domestic contentment and bodily economy, avoid peculiarities in plan and unsymmetrical rooms, study the location of the windows and doors, in conjunction with the positions of furniture.

The law of fitness applies to all

Every house if possible, should have grounds surrounding it, and they should correspond in extent to the size of the house, for the grounds are the setting of the home and the bias of the monument of every man's dream. The interior and the exterior of every home should be a natural reflection of its occupants, and should be thoroughly studied before the plans have been put into execution.

Blue Mountain Oregon Lumber

We Have Just What You Want in LUMBER, SASH AND DOORS AND SHINGLES. It will pay you to investigate our prices.

Bowman-Hicks Lumber Company

MAIN 5
CELAN AND BOX WOOD—PHONE MAIN 547
J. L. MURKILL

MILL WORK OF ALL KINDS

In our specialty. Our labor-saving machinery and efficient methods of working combine to keep the cost of your mill work down to the lowest possible figure. Our motto is a guarantee of satisfaction.

La Grande Const. & Supply Co.
CHAS. E. HARRIS, Prop. Cor. Greenwood and Madison

AWNINGS

We are prepared to make Awnings to fit your needs for your windows and for your porch at home—and their ability to resist sunlight, rain and wind will be a revelation to you.

Telephone us now—one of our workmen will measure your windows today.

Snyder & McKennon
Harness - Saddles - Tires - Top Repairs

Paints and Oils

A Fresh Clean Stock of Paints, Oils, Stain and Varnish. We sell you the same high quality that we have used in our contrasting business for the past 25 years.

Our prices are very reasonable. Feel free to consult us about your painting problem.

Bugg Paint Co.
L. O. O. F. Bldg. Entrance on Wash. Ave.

Sandridge Farm Sold For \$11,500 Recently

D. B. Ruckman, of Alsea, recently sold to G. E. Conklin, who makes his home at Imbler, an 80-acre tract of land on the Sand Ridge.

The consideration amounted to \$11,500.

VISITS IN WALLA WALLA

Nate Zweifel spent last Wednesday in Walla Walla where he attended a successful oil automatic burner demonstration.

We have a great longing inside to drive a fire wagon so we can park by a water plug.

but once before in the city's history, in March of this year, when the total was 25 per cent greater. The total for the first four months of 1925 is \$14,405,520, which is 42 per cent greater than the comparative figure for 1924 and nearly twice that of 1922.

Other cities issuing permits during April follow: Boise, Idaho—\$36,922; Tucson, Arizona—\$4,804; Reno, Nev.—\$115,175; Astoria, Ore.—\$150,145; Eugene, Ore.—\$292,300; Klamath Falls, Ore.—\$28,535; Salem, Ore.—\$28,475; Yakima, Wash.—\$24,447; Hoquiam, Wash.—\$22,700; Seattle, Wash.—\$1,592,820; Los Angeles, Cal.—\$14,495,031; San Francisco, Cal.—\$6,107,731.

H. P. NIELSEN
PHONE 316-R
General Contractor and Builder
805 Spring St., La Grande

Plumbing

Worth Doing Right

The plumbing in your house, whether it is new work for a new home or replacement for the present system, is one of the most important considerations.

Our experience and facilities permit us to serve you in a way that insures your satisfaction. We'll gladly talk over your work and give you an estimate.

Fred Spaeth
PLUMBING, HEATING
SHEET METAL WORKS
108 Fir St. Phone Main 536

Electric Lights—Running Water

Press a button—turn a faucet! The Kohler Automatic's on the job day and night to light your buildings and pump up pressure in your water system.

Life on the farm is certainly easier and pleasanter with this different power and light plan, thanks to such superiorities as automatic operation, freedom from storage battery troubles, ample capacity, and long-range 110-volt current—

Not to mention economical running and low upkeep and depreciation cost. Say the word and our Kohler Automatic is at your service for a demonstration, either here or on your own premises.

NATE ZWEIFEL
1314 Jefferson

KOHLER AUTOMATIC POWER & LIGHT

110 VOLT D.C.



THAT NEW HOME

Of course you want it wired so that you can enjoy every modern Electrical convenience. We'll see to it that it is, rendering a fully satisfactory job before we accept pay for it.

H. & S. ELECTRIC

Cedar Shingles

A carload of well seasoned Cedar Shingles just received from the Coast. They are of very high quality but we are pricing them lower than you might expect.

CEDAR SHINGLES have proven their merits and are superior to any other roofing. Although hit by the hardest weather, they withstand the onslaughts of sun, rain, snow and hail.

We also have Shingle Paint which will add years of service to your roof.

Drop in or phone for our Price List.

Grande Ronde Lumber Company
Retail Yard across the tracks on Greenwood Ave.
"Out of the Woods Direct to Builders"