

Highway and Auto Dope

# AUTOMOBILE NEWS

Traffic and Tourist News

## HILLS ALL LOOK ALIKE TO STAR

Several more victimized hills have been added to the list of those conquered by stock Star cars in the tests being conducted by Star car dealers throughout the west. These hills supplement a long list of hills perhaps better known, but none the less are as severe tests for the power of Star's "Million dollar motor," according to J. P. Morlock, local Star car dealer.

Among the latest victims are Bidwell Bar hill, a well known testing

ground in Oroville, Calif., which was climbed twice in high gear tests by Howard Spicer. The first test, made from a standing start at the foot of the hill, in high gear, found the climb finished in 48 seconds. The second from a flying start, was finished in 28 1/2 seconds. The tests were observed by a local newspaperman.

T. E. Messer, Hollister, Calif., Star car dealer made a public demonstration of a second power climb on Hollister's motorcycle hill, which has never before been climbed, save in low gear. Two Oakland, Calif., motorcycle hills, one of the Moraga road, and the other between Skidmore Boulevard and the Thornhill grade, have been conquered by Star cars. On the former test, four passengers had to be carried to gain the necessary traction to pull the grade. It is one of the steepest hills in California.

## GARAGE GOSSIP

**New Salesman**—Jack Ray, of Baker, is now selling Essex and Hudson cars for E. L. Ledbetter. Mr. Ray has had many years of experience as a car salesman and is acquainted with many people in this territory.

**Mechanic Here**—J. D. Kyle, regional mechanic for the Standard Oil company, was here this week inspecting the motor equipment of the local office. Mr. Kyle tested the new distributing track and other cars and trucks in operation here. His main office is at Baker.

**Picture Man Leaves**—John Bernard, of the Ford Motor company, who was here the early part of the week showing motion pictures at various places in the valley, left Thursday for Baker. Mr. Bernard had with him several motion pictures showing the Ford motor cars, products and other subjects of interest. These were shown at Butler, Union and Cove. At each place especially houses turned out. Mr. Bernard was assisted in his work through courtesy of the Perkins Motor company.

**To Service Lincoln**—J. Worthington, representative of the Lincoln division of the Ford Motor company, arrived in La Grande Friday and will be located at the Perkins Motor company for the remainder of the week and a portion of next week. Mr. Worthington does maintenance work for all Lincoln owners. It is his business to see that the Lincoln cars in this territory are operating in the greatest possible satisfaction. To this end he inspects the cars thoroughly and makes any necessary adjustment.

**Big Six Arrives**—The first of the 1925 model, Big Six Hudsons to be seen here this season was the object of much attraction at the M. J. Goss place yesterday. The car is the property of Harry Bach, an Aberdeen merchant, who drove in to spend a few days at Hot Lake. The car is a five passenger coupe and a real automobile.

**Testing Breaker Point Adjustment**—To determine whether to provide a greater or less separation of the breaker points may be decided in the following manner: If the gap is too great, the engine will miss at high speeds. This is due to the fact that the time is not sufficient to permit the breaker points to come together properly and the cut therefore does not build up to its maximum strength. If the engine misses at low speeds, the gap is too small, the missing being due to the fact that the distance between the points is so small that an arc may be formed between them. In such cases, the engine may operate fairly well at high speeds. This is possible, especially if the spring is slightly weaker than it should be, as the action of the cam throws the arm farther, thus increasing the gap.—American Automobile Digest.

## ANN ARBOR TRIES BUSESSES

**Motor Transit Lines Are Given Test by Michigan City in Effort to Determine the Most Desirable Type of Urban Transportation.**

ANN ARBOR.—An interesting experiment in local transportation is now under way in Ann Arbor, Mich., where the city's street railway system has suspended operation indefinitely while motor coach service is being tried out. The outcome of this experiment is being closely watched by municipal and street railway officials in many cities.

The situation in Ann Arbor was not unlike that existing in many American cities today. The demand for passenger transportation had outgrown available facilities. After long conferences between municipal and street railway officials of Ann Arbor, an agreement was finally reached permitting the street car company to suspend its service for an indefinite period. A contract was made with the People's Motor Coach Co., a subsidiary of the Detroit United Railways, whereby the coach company was to provide the city with transportation for one year.

Under the provisions of the agreement between the city of Ann Arbor and the People's Motor Coach Co., the city has the right to bar the coaches and order the street cars back at any time during the year. The motor coach company does not have the option of retiring its coaches until the expiration of its one year contract. At that time the coach company and the city authorities will sit down together and decide as to the future passenger transportation system for the city of Ann Arbor. Since the voluntary retirement of the city's street cars, Ann Arbor is being served by 14 modern 29-passenger Yellow Coaches. The coaches cover a very extensive territory, and due to their flexibility have been able to adopt routes that insure the greatest convenience for the people living in various parts of the city.

The transportation situation in Ann Arbor is entirely in the hands of the people, who having had street cars, will be able to compare that form of service with that of modern motor coaches. Having made the comparison, the people will be in a position to decide whether they prefer motor coaches to street cars. Eight cities in the United States are now depending on motor coaches alone for public transportation. These cities include Emporia, Kans.; Middleton, N. Y.; Rutland, Vt.; and Monterey, Pasadena and Redlands, Calif.

**DOES CLUTCH DRAG?**—There are several indications of a dragging clutch, and every owner should know what they are, not merely as a means of obviating trouble but as a means of forestalling unwarranted blame of the transmission. When the clutch drags there will be chattering under the floor boards when starting or backing gears. It will be difficult to get into low or reverse when driving to start or back up. When you coast the speedometer will continue to show change thus proving that the clutch is still following the flywheel.

**CLEAN WITHOUT WEAR**—The temptation to use gasoline or kerosene for cleaning the running boards is always strong, for nothing cleans them as quickly nor so thoroughly. But the wear on the boards does not justify this treatment, soap and water being far more practical in the long run. Kerosene or gasoline will cause cracking and rotting of the running board material, particularly if this is rubber. And where the oil touches the splash pan or the fenders the paint will, in time, be damaged.

**SAVES A SHORT**—Whenever wiring is in danger of chafing it may save a short in tape if the wiring to the horn of the average car is usually run without the protection of a conduit and there are several points where the insulation is liable to wear off and cause trouble. Sometimes the floorboards will chafe the battery connection wires. Rubbing off enough of the wire insulation to expose the wire for trouble. A little taping in time saves a short.

**STRETCH NEW FAN BELT**—Giving the new fan belt an extra stretch with the hand before adjusting it will take out much of its early wearing stretch and thus postpone the time when a second adjustment of the fan is necessary.

The Lincoln was awarded the grand prize at the Blue' Automobile Show held recently at New Orleans, La.

Delivered by a prominent society girl of the city, a Lincoln touring car captured the honors in the sport model and touring car class and then was given the grand prize over all other entrants.

The Lincoln Judkins coupe also came in for honors, capturing the first place in the two-door closed car class.

## HEAT INDICATOR LENGTHENS LIFE OF MOTOR CAR

NEW YORK, N. Y.—The most delicate and the most expensive part of the automobile is of course the engine, yet as it is hidden from your eyes as you drive, anything can happen to its internal workings, unless a certain amount of precaution is taken. How many motorists know that there are sixteen ways or causes of overheating an engine? Set forth briefly they are: Radiator leaks, broken water pump, rotting of the rubber hose passages, choked water passages, cylinder friction, loose oil pipe connections, clogged strainers, broken oil pumps, worn piston rings, driving with retarded spark, improper timing, improper carburetor adjustment, broken fan belt and clogged mufflers are some of the more important reasons for a heated motor, and must be carefully guarded against.

Inasmuch as the engine is covered with a vault-like steel covering it was found to be impossible for the motorist to ascertain when engine trouble was imminent, on account of an overheated condition, until the damage was done. This accounts for the presence of the heat indicator on the radiator cap of most automobiles, and it has been proven many times that if the driver will keep a casual eye on this instrument his motor troubles will disappear, for the

heat indicator is a sure prognosticator of trouble.

DETROIT, Mich.—A sport touring car, duplicate of the type which created so much comment when displayed in the Lincoln exhibit at the Automobile Salon held early in the year in Chicago, has been added

to the Lincoln line. Introduction of this smart car comes as the result of the popularity which it attained at the show and the numerous orders coming in for it since that time.

**GOOD 4-BRAKE TEST**  
A quiet street, level, well paved and wide, makes an ideal place to test the accuracy of your four-wheel brake adjustments, if there is ice on the street. The slightest misadjustment will be noted in the tendency of the car to deviate from a straight course when stopping.

# Tires and Accessories

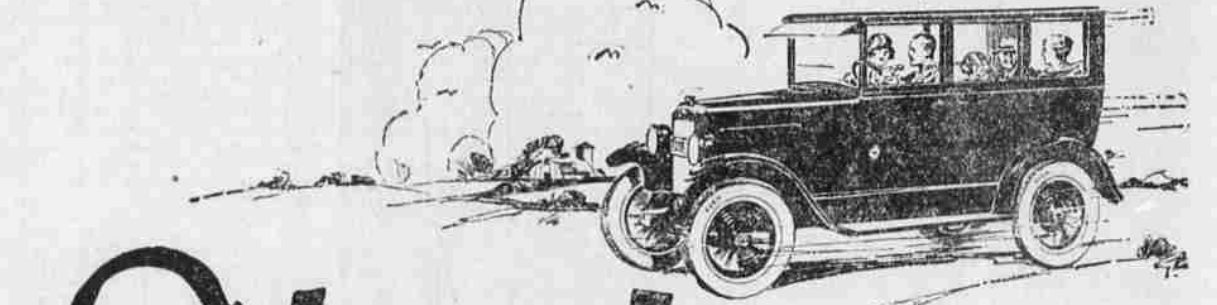
Our customers are protected by our own guarantee. Our business is built from satisfied customers. VELTEX GASOLINE AND OIL.

## La Grande Filling Station

Wins by Fair Dealing.

J. F. Heasty, Prop.

## WILLYS-OVERLAND FINE MOTOR CARS



# Stop!

## Look at this Value

All Steel Sedan \$715

Its great power will astonish you. (Unmatched near the price.) All-Steel body—safest type of body ever invented.

Standard Sedan \$655

Patented Triplex Springs—130-inch springbase—amazing comfort. Extra-heavy axles of tremendous strength. Molybdenum steel.

All Steel Coupe \$635

Big 10-inch brakes—quick stopping! Unquestionably Overland is the greatest dollar-for-dollar value ever offered. See it. Drive it. You can't help liking it.

All Steel Touring \$495

52 Weeks to Pay! Buy your Overland out of your income without feeling it. Small down payment—and you can drive your Overland home.

All prices f. o. b. Toledo

## World's Lowest Priced Cars with Sliding Gear Transmission

# OVERLAND

## Gettings & Hanks

1312 Jefferson Ave.

## Exide Batteries

STROMBERG CARBURETORS  
S. & M. Spotlights  
Packard Wire—all sizes  
Generator & Starter Brushes  
Light Globes—all sizes  
Lamp Sockets  
Genuine Henny and Delco Coils, Points, etc.

FRED T. BURGESS

1808 Jefferson Ave.

## The General Cord Tire

Means Greatest Economy Because It Means Longest Life

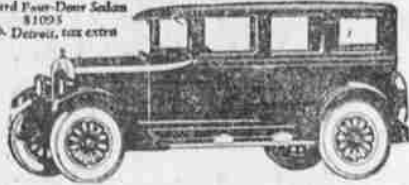
Available in either Full Balloon Type or Low-Pressure Cords.

The GENERAL CORD—Goes a Long Way to Make Friends.

## BUICK GARAGE

Jennings & Shumate, Props. Successors to Southard & Shinn

Standard Four-Door Sedan \$1095 & a. b. Deuce, tax extra



## ANNOUNCING---

We take pleasure in announcing to the motoring public of Union and Wallowa Counties that we have been appointed dealer for the following lines of Proven and Recognized Motor Cars.

Maxwell & Chrysler -- Paige & Jewett Cars The New Franklin

Present owners and Prospective owners are cordially invited to visit our showroom where the popular models are now on display. Present owners of these cars are assured of any necessary service. Prospective owners will be delighted in seeing the new smart models.

## Harris F. French Motor Co.

1115 Washington Ave.

The Crown-Imperial

