

Highway and Auto Dope

Traffic and Tourist News

AUTOMOBILE NEWS

MOTOR AGE APPROACHING SAYS BABSON

Majority of Travel in the Future to Be by Bus and Airplane Routes, Predicts Statistician.

BABSON PARK, Mass.—"Should we have unlimited franchises for the motor bus lines and if so who shall operate them?" Because of widespread discussion this question was asked today, to Roger W. Babson, the statistician, who calls attention to several vital points in the future of our transportation systems.

"Without doubt buses have come to stay," says Mr. Babson. "The motor coach is fast becoming a definite and logical link in our transportation systems, both urban and interurban. For railroads, street railways or air-railroad combinations to attempt to stop the development of motor coach travel, is like attempting to sweep back the ocean with a broom. Efficiency, comfort and speed are all in favor of the motor coach bus, as it is commonly called, and the sooner communities realize it, the better for all concerned. When a stream of water is dammed down a hill it is far better to dig a channel and control this stream within safe limits than to attempt to dam its flow. If Holland had not followed this policy it would today be a barren marsh instead of a fertile garden.

"This does not mean that railroads or street railways will cease to function. As the electric light did not put the gas companies out of business, so the motor coach will not necessarily make the steam roads or the street railways valueless. I say 'necessarily' because there may not be much hope for the street railway company which does not adjust motor coach transportation. I am bullish on steam railroads because they are the natural transporters of freight, which has always been their great source of income. In fact, it is now sort of a death bed repentance to see these steam railroads fighting for passenger service which they have stated all along was carried at a loss. The railroads have nothing to worry about if they will tend to their freight business and develop it and get a proper charge for carrying it on. Many interurban and other street railways will ultimately become an adjunct of the steam roads for carrying perishable freight. Owing to the great congestion in the freight yards of the steam railroads, it is much more practical to take fruit, vegetables, meats and other perishable goods by truck, which is practically door-to-door delivery, than by steam roads. The street railway tracks in many of our cities will be used to haul freight cars from the steam roads into the factories, department stores, and other buildings throughout the city. Both steam roads and up-to-date electric roads can continue to exist, but it will be through co-operation in the development of freight—each handling what it can best handle and getting paid a rate sufficient to take care of the investment.

"When it comes to passenger business," continued Mr. Babson, "within the next twenty-five years 90 per cent of the passengers of this country will be carried either by motor coach or by air. We are fast approaching the time when we will reach a peak in the number of people carried on rails. When this peak is finally reached, the decline will be very rapid.

"Now the motor coach business belongs to the street railways and not to the steam railroads. The steam roads have private rights of way and should be protected on these private rights of way, but the street railways spent money on street widening, paving, and are entitled to the motor coach business. For the railroads to attempt to say that the public should not have the use of motor coaches between two cities like Lowell and Boston seems to me to be absolutely ridiculous. Furthermore, if such a motor coach business is to be developed, the street railways which heretofore operated electric cars on such routes should have the franchise to do the motor coach business. Any other decision would be absolutely unfair, and I believe the courts would look upon the same as a confiscation of the street railway company's business. If our steam railroads are wise, they will build up their freight business and study the possibilities of air transportation instead of fussing with such motor coach transportation as logically belongs to the street railways.

"I always hesitate to advise in these columns the purchase of any security, especially securities in a new field. Usually the first people to go into a new line of business lose money. Some 80 per cent of

LEIGHTON IS STILL GRINDING

Machine Shop Installs New Equipment to Give Improved Bearing Service to Customers.

When asked for news Robert Leighton, owner of Leighton's Welding and Machine Works, said, "We are keeping right on grinding cylinders and pistons, making connecting rods and doing added work."

"This statement practically sums up the policy of the Leighton installation of continuing to give customers the best possible service day after day along the lines for which it is specially equipped.

One should not gather the impression from these statements that Leighton's is not a strictly modern shop. To the contrary, new machinery is continually being added.

A new set of machines for making connecting rod bearings was recently installed in the shop. This method pours the babbit directly into the rod and eliminates the use of screws to hold the metal in place thus making the job a much more permanent one.

Given the size of the crank shaft the expert workmen in the Leighton shop will run the bearing to the rod, smooth it out, and fit it to allow proper clearance to the thousandth of an inch.

The various precision machinery in the Leighton shop is fascinating to one mechanically inclined. The huge lathes cut the hardest metal with apparently as much ease as one whittles wood. The shop is so completely equipped that the workmen can duplicate practically any part of a car.

SAMMY SPARK PLUG



Says:

"Will Rogers has a new traffic relief plan. 'Abolish all turns,' he proposes. 'Go straight to where you want to go.'"

new corporations go through a re-organization. Although the early investors perform a real service in breaking the trail, they usually get experience rather than dividends. "On the other hand, I do feel that clients may be justified in going into certain companies with friends whom they know as honest men and who know the motor coach business. The companies which control the great motor coach transportation business in New York, Chicago, St. Louis and other cities should have a bright future. Of course, the great opportunity is to purchase the securities of street railway companies which are now lumbering as street railways, but which still have a chance to acquire or inherit this great industry.

"Money is still plentiful and cheap. With general business as reflected by the Baltimore at 2 1/2 per cent above normal, and fundamental conditions sound, there is no good reason why bus transportation should not develop rapidly."

FORD ENROLLMENT PLAN IS PROVING WIDELY POPULAR

DETROIT, Mich.—One of the most interesting features of the March sales reports of the Ford Motor company, as given out at the company offices in Detroit, is the large number of people who enrolled cars under the easy method of the Ford Weekly Purchase Plan. The reports show that plan enrollments averaged more than 1,000 a day for the month, the total for the twenty-six working days of March being 26,526. This is a gain of about 200 a day over the enrollment figures for the last few days of February.

Aside from the large enrollments under the plan, sales for March were 172,132 Ford cars and trucks. Of this number domestic retail dealers totaled 152,829, an increase of 4,141 over February, indicating improving conditions everywhere throughout the country. Reports covering dealers' requirements for the present month also show the demand for cars and trucks rapidly moving upward.

Another healthy condition, at least as far as agricultural interests are concerned, is reflected in the domestic retail sales of 5,225 Fordson Tractors during March. This is an increase of 5,311 more than were delivered in February. Domestic and foreign sales of Fordsons reached a total of 18,502 in March.

WRECKING CO. TO MOVE SOON

In order to provide extra room for business expansion, Bert Rominger, manager of the La Grande Wrecking company, has leased the Rogers barn in the 1400 block on Adams avenue and will make this his headquarters, commencing the first of the week.

The old location of the wrecking company on the corner of Island and Jefferson avenues is to be retained and will be used principally as a storage plant. Mr. Rominger's brother, Frank Rominger, arrived here recently and is now assisting in the management of the business. Besides the regular wrecking business furnishing second hand parts to car owners the La Grande Wrecking company will handle used cars in the new location. These are to be handled on a serious margin as possible and will give the buyer many real bargains in used automobiles to choose from. A number of cars for wrecking have already been bought by the company. The parts obtained from these cars to be handled on a cash

large stock carried on hand make it possible to obtain parts for nearly any make of car.

Berlin to Top Eiffel Tower

BERLIN (AP)—Two broadcast towers are now under construction in Germany that will exceed in height all others in the country. Both will be provided with elevators, and will be used as observatories as well. One, to be located in a suburb of Berlin, will be 1045 feet high, topping the Eiffel tower at Paris.

St. Louis safe blowers got only \$26, which is poor pay for an expert.

Exide Batteries
STROMBERG CARBURETORS
S. & M. Spotlights
Packard Wire—all sizes
Generator & Starter Brushes
Light Globes—all sizes
Lamp Sockets
Genuine Itemy and Delco
Coils, Points, etc.

Classen Horns
Ston Lights
Robert Bosch and Champion
Spark Plugs
Copper Tubing
Garfield Scubbers

FRED T. BURGESS
1308 Jefferson Ave.
WEAEN 128

LOOK OVER OUR WANT ADS FOR BARGAINS

When You Start

Out on your vacation tour, will your baggage be in good shape? Will you need riding boots or gloves when you pack back in the mountains for part of the trip?

We can be of service to you in repairing baggage and any kind of leather work. Boots and gloves of fine quality ready for your inspection.

Come in when you plan your trip.

Snyder & McKennon
Tires and Tubes—Auto Top Repairs

DODGE BROS. MOTOR CARS
Prices f. o. b. La Grande

TOURING	\$1065
ROADSTER	\$1025
COUPE	\$1190
SEDAN	\$1315
COACH	\$1315

Smith's Garage



\$25,000 Invested To Insure You Fine Machine Work

A welding and machine shop is not properly equipped to produce the finest quality of work until it has all the modern machinery and equipment that accurate, painstaking service requires.

That's why our equipment represents an investment of \$25,000—the finest and best machinery that modern methods and expert knowledge demands. And that's why your job—whether casting a bearing, regrinding cylinders, or rebuilding an engine—is certain to be finished as it should be done.

Such an investment is large but it is eminently worth while—because it permits production of quality that you have a right to demand. There's no doubt about the quality of a Leighton job.

Leighton's Welding & Machine Works
"Tell Your Garage Man to Have Leighton Do It."
1311 WASHINGTON AVE. PHONE MAIN 127

\$715
J. B. Tiede

World's Lowest Priced Sedan
with Sliding Gear Transmission

All-Steel Body... Big Power... Disc-Type Clutch... Extreme Economy... Great Reliability... Easy Terms

OVERLAND
See Your Local Willys-Overland Dealer.

WILLYS-OVERLAND FINE MOTOR CARS

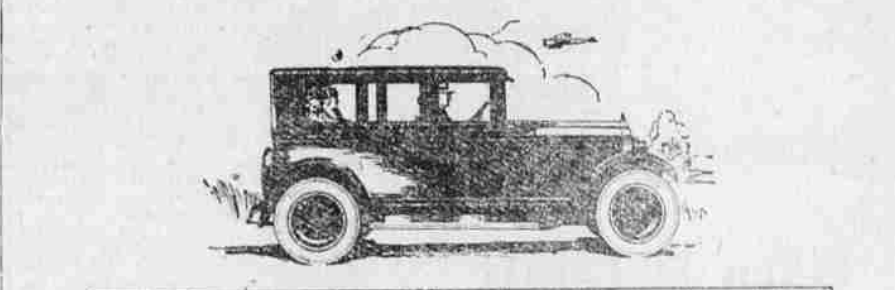
Power and Pickup that Make Everybody Marvel

The tremendous success of the more powerful new Willys-Knight has abundantly borne out the prediction made in January that this great car would make history in 1925.

The vastly increased power and flashing pick-up of the new Willys-Knight give this fine car a place all its own in the esteem of the public. Its sleeve-valve engine is free from noisy tappets... it is the only type of automobile engine that actually improves with use... no carbon trouble... no valves to grind... and the celebrated Lanchester Balancer prevents vibration at any engine speed.

The sanest automobile investment on the market. Easy terms—small down payment.

WILLYS-KNIGHT with an Engine You'll Never Wear Out



Touring, \$1295; Coupe, \$1495; Coupe-Sedan, \$1495; Sedan, \$1575; Brougham, \$1695 f. o. b. Toledo.

Gettings & Hanks
1312-14 JEFFERSON ST. LA GRANDE, ORE.

Complete Car Service
At Your Beck And Call

There's lots of satisfaction to a car owner in knowing that you can get such a complete service as we offer constantly.

Gas and oil, yes!—world-famous Texaco Products—but much more than that. Grease and Crankcase Service, Car Washing done in the careful way you want it done, Quick Tire Repairing and Vulcanizing. And then there is our large stock of new Tires—every one protected for one year against any repair expense.

If it's not convenient, you don't have to drive down. Phone us—we'll get your car and return it quickly with expert service rendered.

Playle Oil Company