

Highway and Auto Dope

Traffic and Tourist News

AUTOMOBILE NEWS

TEXAS OIL COMPANY TO BUILD PLANT

New Building Is to Be Erected Here for the Wholesale Distribution of Texaco Products.

Announcement of a new wholesale plant to be built in La Grande by the Texas Oil company was made yesterday by Auditor Playle, of the Phylis Oil company, local manager and head of Texaco distribution in Union county.

J. L. Hartson, superintendent of R. L. Kerr, assistant superintendent of the Texas company were here from Spokane Thursday, to make the preliminary arrangements for the erection of the plant.

The site selected and purchased by the Texas company is located on the main highway just west of the Union Oil company plant. The building and storage facilities of the new wholesale plant are to be large enough to take care of the rapidly increasing Texaco business in this territory.

H. J. Clark, construction foreman for the Texas company will arrive here next week and will place men at work on the construction of the plant immediately. Details of the construction are not available at the present time. Mr. Clark will draw his plans and make all preliminary arrangements for the building and the storage tanks and other equipment after his arrival here.

The storage tanks of the Texas company are present located near Island City. The territory to be served by the new plant includes nearly all of Union county. Mr. Playle superintends the distribution of the Texaco products from Mosheim to Tolocast and all towns between and from La Grande to Elgin.

INDIANS ORGANIZE

WHITE EAGLE, Okla. — There is a sure enough "All-American" post of the American Legion here. Buffalo Post No. 23 here is composed entirely of full-blooded American Indians. Each member of the post owns an allotment of land from the government and all reside on the reservation near White Eagle.

When You Have Some Place To Go

And you want to get there in a hurry—and you want to be comfortable and restful while you're traveling—and you want to be able to enjoy the scenery without thinking of engine or mechanism—and you want to save on travel expense.

When you want these things, then you want the New Studebaker Closed Car.

Of course it's a beautiful car, too, correctly appointed and possessing coachwork such as only Studebaker can build at such a price—but it's the way the car hits the road that gets you! Easy to handle no matter what the speed, holds the road like a greyhound, and as comfortable as your own easy chair at home.

Ride in the new Studebaker—then you'll appreciate the necessity for placing your order at once. The demand is tremendous, of course.

M. J. GOSS

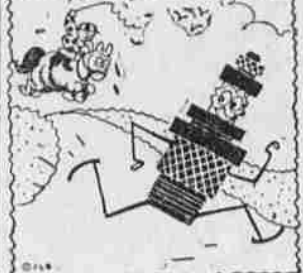
Studebaker Sales and Service. "This Is A Studebaker Year"

DODGE BROTHERS CLOSED CARS ARE POPULAR

Like other makes of cars the closed models of the Dodge Brothers line are increasing in popularity, says L. C. Smith, La Grande dealer in Dodge products. Mr. Smith unloaded a carload of new Dodges today. All were closed models in the coach and sedan types.

A feature of the new Dodge which is proving popular is the balloon tire equipment. Dodge cars have balloons as standard equipment. The tires are unusually large and thus afford the maximum of cushioning surface contributing a great deal to the ease of riding.

SAMMY SPARK PLUG



Says: Will Rogers proposes to have all eastbound traffic go east on Mondays, Wednesdays and Fridays and all westbound traffic west on Tuesdays, Thursdays and Saturdays.

PRICE TAG ON SAFETY

Depreciation, that worry of car owners, is much less feared if considered as the price of safety. Every new car that comes on the market, or new model of standard make, is safer than its predecessor, both in construction and in new features of design. When a motorist decides to sacrifice his old car in order to acquire the new one, he is, in effect, investing in additional security on the streets and highways. It is somewhat the same principle that encourages a business house to tear down its frame building and erect a fire-proof structure.

The Buffalo Braves, only recently organized, are making plans for a membership drive through which they expect to sign up all eligible members of their tribe in the vicinity of White Eagle.

SMART STYLES DISPLAYED IN MOTOR TOGS

(By M. M. M.)

The popularity of sports clothes in both women's and men's apparel, is undoubtedly due to the motor car, because of their practicality and smartness at the same time. The lady on a motor trip wears something that is simple yet fashionable and something that will look nice at the end of her journey. For this purpose a knitted one or two piece sports dress is excellent, with a small close fitting hat to match and sensible pumps or oxfords, not loud in cut or color. Some prefer a knicker suit or a suit with a wrap around skirt and box coat, of tweed, and a silk shirt, although this is not as popular at the present time as a one or two piece dress of material that does not crush easily. An accessory with this outfit is one of the new top coats which are so popular at the present time. This costume is conservative in both style and color and a sort of contrasting bright color is extremely smart with it. Sweaters and skirts, which are always good for sports wear, are also excellent for the motor trip. If plans are made to stop at a hotel for dinner a dress of printed crepe, or other material that does not crush, may be carried easily in a hat box, attached trunk or suitcase, with shoes, hose and hat to match. Knitted silk underwear does not take up much room and is practical for sports wear. Hill's department store carries an excellent line of ladies sports wear.

With the gentleman sport clothes are also best for the motor trip. The Norfolk suits, which N. K. West's have in stock, are very good worn with a plaid cap and either leather puttees or golf socks. Many men, however, prefer plus-four knickers with a regular English coat, a collar attached shirt, shoes on the new balloon last in a French tan or sunset color, with a natural grain rubber sole. With this suit the new snap brim sport hat or a cap of the Scotch fabric is good. The shirts are of English broadcloth, French madras and other materials. There are darker colors however and many of them are striped or figured. The knickers are made of Cavette cloth, light weight madras and other suitable material in Grecian gray, London tan, London lavender, Pique fock flannels and dovetones. The hats are of Verdure pastels and grays and the caps are mostly of the Loekenbar patterns.

French flannel shirts are also popular with the men for sports wear. These shirts are of a summer weight material and are in all the light colors. The blazer shirt, of Sherman cloth, in high colors, is also very good.

Other accessories, such as belts and neck ties are in bright colors. Red is a good color for the tie which is made of closely knit material. Other colors are also good but they are all bright. The belt is of the new striped sports type. Golf socks to match or harmonize with the rest of the costume are best.

Another necessary for the motor trip is a slip-on V-neck sweater and gloves of buckskin, lambswool, Mexican goat or dog skin. The proper sports costume includes pants of blue English broadcloth and a white jersey silk shirt. Westmeyer and Gilbert carry an excellent line of this wearing apparel for men.

Both lady and the gentleman carry a fitted traveling bag, which is made especially to fit under the seat of the motor car.

SAMMY SPARK PLUG



Says: Al Johnson said he got a job as chauffeur and then lost it because he took the boss' car without permission. When asked how the boss found out about it, Al replied: "I ran over him."

KEEP THIS IN MIND

When a clutch drags a bit the main driving gears do not stop spinning promptly enough for a quick shift to "low" in starting. One way to overcome this annoyance is to hold the clutch out and keep the car in low gear, but it is a very dangerous process. Should the driver's foot slip off the clutch the machine would start forward and perhaps run into a pedestrian. The safer way is to hold the clutch out and keep the gears in reverse. Almost as quick a start is had with none of the risks of the other method.

BIG PRODUCTION FAILS TO MEET DEMAND FOR CARS

The volume of the Hudson Motor company factory has now been increased until at the present time 1999 cars a day are being turned out, according to figures received here by E. L. Ledbetter, Hudson and Essex dealer.

This daily production places the Hudson company at the head of the industry in the number of six cylinder cars turned out in a day. The leadership of the Hudson company is all the more unusual because of the fact that the bulk of the production is devoted to turning out closed cars.

Hudson's policy of placing the coach prices on both Hudson and Essex cars at actually below the open car cost has caused a great increase in the demand for the closed models.

The present production, enormous as it is, still fails to meet the demand for the cars. Mr. Ledbetter reports that at present time he is getting but 50 per cent of his regular allotment and that the factory is several carloads behind in his shipments.

WORTH REMEMBERING

In some engines there is a plug at the front end of the engine base which, when removed, offers a means of cleaning the oil distributor pipe should it become clogged. Whether the pump is attached front or rear its removal also furnishes a means of cleaning the pipe. Remember, stoppage in the distributor pipe is usually indicated by the registering of excessive oil pressure on the gauge when conditions should be normal.

STANDARD MAN

Thomas Barnes of the Walla Walla office of the Standard Oil company was in La Grande this week. Mr. Barnes is the district engineer for the Standard company. He returned to Walla Walla yesterday.

Bakers Struck in New York

19,000 of them. They wanted more dough of one kind or less of another.

The Mad Hatter seems to write the price tags on spring bonnets.

NEW TRUCK SPECIAL BUILT

Unusual Assembly Job Successfully Completed by Perkins Motor Company Automobile Mechanics.

The larger plants have nothing on the Perkins Motor company when it comes to assembling cars. A special assembly job was turned out this week for the C. C. Pratt Lumber company which presented some unusual wrinkles in assembly work.

The chassis of the truck, a one ton Ford, was lengthened 39 inches to get the longer lengths of lumber without requiring tying down.

In order to extend the chassis to this length two pieces of channel steel were riveted about the middle of the frame. The drive shaft was thus too short and a special transmission was put in to take care of the excess space. The transmission is in itself very unusual for the reason that it gives the car four speeds ahead and two to the rear.

The framework when completed was really stronger than the original construction and customers of the Pratt Lumber company will hereafter have their lumber delivered on the new truck.

Bakers struck in New York, 19,000 of them. They wanted more dough of one kind or less of another.

The Mad Hatter seems to write the price tags on spring bonnets.

Motor Driven Vessels to Take Place of Steamships, Say British

LONDON (AP) — A big "sea change" — steamships to motorships — is predicted in the annual report of Harland and Wolff, the big shipbuilding firm.

The company, which has 13 motorships under construction, including three liners of over 20,000 tons, reports that judging from present indications, "the motorship will supersede the steamship in much the same way as in the course of the last century the steamship superseded the sailing ship."

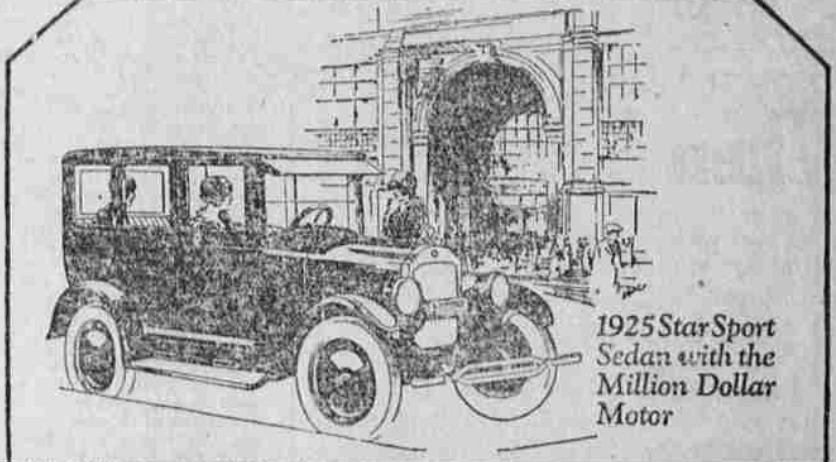
Only thing you can tell by some watches is what time it isn't.

CAR SALES HOLDING UP

OAKLAND, Cal. — Indications that Star car business, not only on the coast, but throughout the country and Canada as well, was experiencing an unprecedented rush, are contained in a telegram received here by Norman DeVaux, vice president and general manager, from R. H. Mulch, general manager of the Durant plants at Leaside, Ontario.

The wire announced the inability of Mulch, who is well known on the Pacific coast and here, where he was formerly sales manager of the Star and Chevrolet Motor Companies of California, to break away for a previously planned trip to Oakland. Business is booming here, and we are trying everything we can to step up production," the wire said in part.

Mulch, however, added that he expected to pay the west a visit some time later. DeVaux, on receiving the wire, stated that this was a true reflection of the rise in the business tide, and added that the Pacific coast was experiencing a like demand for automobiles, with production at its limits to supply a rising demand, especially for enclosed cars, and including the Star coach.



1925 Star Sport Sedan with the Million Dollar Motor

Quick Pick-up means POWER

When a car can accelerate from 5 to 25 miles an hour in 41 seconds, it means power. That's what the Million Dollar Motor in the 1925 Star Car guarantees. Power—abundant power—power for speed, power for hills, power for the tough going, sand, mud.

It cost a million to build, but you'll say its worth it, every cent of it. For the first time, real power has been built into a low cost car.

Drive this new motor. Get the thrill of real power—that's all we ask.

Today—at your Star dealer's—test out this new motor.

J. P. MORELOCK
La Grande, Ore.

[See It at Your Dealer's. Drive It. Compare It]



There's no economy in buying Twice to go the distance that one General Cord will take you

The General Cord

—goes a long way to make friends.

Buick Garage

Jennings & Shumate, Props.

George Richardson Says--

"Selberlings are the best tires I ever used." If you think that George don't practice what he preaches, look his truck over some time.

Come down and see us, and let us show you America's finest tire.

Highway Service Station

ROBT. R. CAREY, Mgr.

1703 Adams Ave.

Like Buying Fire Insurance

You should be as much interested in buying protection with your gas and oil as you are when you buy a fire insurance policy.

Your motor is valuable property—worth protecting. And Veltex provides that protection. You can always get Veltex Service—and

You can buy VELTEX at these stations

La Grande La Grande Filling Station Square Deal Filling Station Auto Electric Service Co. Oregon Tire and Battery Co. L. C. Smith—Dodge Garage Jennings & Shumate, Buick Gar.	Union Oregon Trail Garage Rex Gamble Brown's Garage
Elgin E. F. Hug & Co.	Cove W. F. Breshears Leonard Towle
Summerville J. J. Wagner	Imbler Andrews Bros. A. Page & Son
	Alicel Bryant & Bryant J. Rossen

FLETCHER OIL COMPANY

T. R. MAXWELL, Mgr.—A HOME COMPANY