

# La Grande Evening Observer

FRANK B. APPELBY, Editor and Publisher  
HARVEY F. MATTHEWS, Business Manager

Published evenings, except Sunday, at 1415 Adams Avenue, La Grande, Oregon. The Observer-Star published every Friday. Entered at the Postoffice at La Grande, Oregon, as Second Class Mail Matter under act of March 2, 1879.

OFFICIAL PAPER OF UNION COUNTY AND THE CITY OF LA GRANDE

MEMBER ASSOCIATED PRESS  
The Associated Press is exclusively entitled to use for publication of all news dispatches credited to it or not otherwise credited if published therein. All rights of republication of special dispatches in this paper, and also the local news herein also are reserved.

SUBSCRIPTION RATES  
By Carrier  
Daily, per month in advance.....75c  
Daily, per month in advance.....\$4.50  
Daily, single copy.....5c

By Mail  
Daily, per month in advance.....50c  
Daily, per six months in advance.....\$2.50  
Daily, per year in advance.....\$5.00  
Weekly Observer-Star, per year.....\$3.00

ADVERTISING RATES  
Display, foreign, per column inch.....42c  
Display, local, per column inch.....40c  
Time contract rates on application.



SERVE THE LORD with gladness; come before his presence with singing. For the Lord is good; his mercy is everlasting; and his truth endureth to all generations.—Psalm 100:2, 3.

Spring starts whenever she gets the spring hat fever.

A boy who doesn't want to eat things that make him sick is already sick.

Any man can figure out how generous he would be if he had a little more money.

**"IN THE SPRING—"**  
Before we speak of spring itself, we wish to say that spring fever, which is going to be quite common during the next month or so in the Grande Ronde valley, is not explained in the same way by all psychologists and physicians, but without regard to what these learned folk say the people who get it will heartily agree that it is a very real and not exactly an unpleasant thing.

Some writers tell us that it is nothing but a lethargic drowsiness, caused by the poisons accumulated during the physical inaction of winter. We can help nature to eliminate these poisons by taking long walks, breathing deeply of the fresh and stimulating Oregon spring air, or starting to hoe the garden.

There is reason to believe, however, that spring fever is not entirely physical. There is a good deal of the psychic in it also. It is partly psychic insofar as it is a reaction from winter. The contrast between the first warm weather and the cold of winter unconsciously reminds us of the sluggishness of the tropics, home of our prehistoric ancestors. Or perhaps spring fever is an inheritance from the times when the cave man, after a long and monotonous winter in his den, strolled out to bask lazily in the warm spring sunlight. Agreeable as the gentle lassitude of spring fever often is, we must not surrender ourselves to it too readily, for there is more work to be done in the spring than perhaps in any other season, and the man who abandons himself to spring fever has a tendency to shirk his share of it.

With this warning emphasized, we wish to observe that the delights of spring cannot be easily exaggerated. It is then that sap starts rising in the trees. Grass sprouts green. Plant life buds. Chirping birds pause on their way north. The bear leave his den. Timber wolves stop running in packs and mate. That is spring—the sunrise of a new period of life. The backyard gardener stirs. Farmers whistle in the fields. Golf bugs smack their lips. Fishermen go over their tackle. Small boys swarm with marbles, baseballs, kites.

Spring is the time to take a new lease on life, to get a fresh start. Fill your lungs with fresh air and go to it. The best thing about spring is that it is a prelude to another round of intense human activity. Except, of course, for the gentleman who has spring fever 365 days of the year.

## THE OLD HOME TOWN • • • By Stanley



## OFFICE CAT By Jemius

He came to breakfast quite early on his first morning at the new boarding house. The proprietress was all smiles.

"Will you take tea, coffee, or cocoa?" she asked.

"But he knew boarding houses. 'Whichever you call it,' said he.

Paying cash for what one wants is a good way to break the habit of wanting so much.

Our guests in when a worm turns it is merely to contemplate where he was and not to see where he is going.

Peter Piper played a pot of poker. A pretty pot of poker Peter Piper picked.

But a poker with a poker picked on Peter Piper. And pocketed the poker-pot that Peter Piper picked!

If it is true that "clothes make the man" it is equally true that they ruin the chorus girl.

Customer: "But if you are selling these watches under cost price where does your profit come in?" Assistant: "We make our profit out of repairing them."

Never show off your ratio before company. Fable goeth before truth.

Ransom Tatters and his wife had missed the train to the city.

"If you hadn't been so plaguesome now, we wouldn't have missed it," declared Tatters peevishly.

"Yes, and if you hadn't hurried me so," returned his wife, "we wouldn't have to wait so long for the next one."

It is a real pleasure for mothers to tuck the children in bed if they can wait up until the children get home.

Indignant Comedian: "Look here, I object to going on just after this monkey act!" Stage Manager: "Why, laddie! Are you afraid they'll think you're an enquirer?"

Funeral Services at Halfway  
The funeral services and burial of Nolan L. Skiff, who died in Portland last Saturday, were held in Halfway Tuesday.

Several La Grande friends and brother Edna of the deceased attended the interment.

## HUSBAND AIDS WIFE IN CASE

(Continued from Page 1.)  
separated, Ware is helping his wife in her prosecution of Kuney. To see that she gets justice."

That is what makes the case unique of type. It touches up the dark spots with a splash of civility, or what would you call it?  
Charges Wait.

Kuney now is in Three Lakes, Wis., and said to be involved in some difficulties with the law there. So soon as he has his freedom...

## A Reliable Bank

Reliability that means helpfulness as well as safety—no matter what the emergency.

La Grande National Bank  
Sound, Reliable, Progressive

## DAYTON BANK ROBBER FLEES

DAYTON, Ore.—An exceedingly nervous young robber about one o'clock yesterday afternoon held up J. L. Sherman, president of the bank of Dayton, while the latter was alone in the bank, and escaped with approximately \$1500 in money. He is believed to have entered a gray Packard automobile, which was last seen near Amity, going south.

past experience proves the third or C grades frequently bring us red returns and rarely any profits. We accept the matter of high freight rates as a tendency to discourage the further production of fruit and charge the fact of our inability to market our product from year to year at a living profit to the fact that rail lines charge more to carry a box of apples to the Middle West than the growers receive for the fruit. We recommend when future calls are made for conferences toward a reduction of freight rates, that every grower contribute his name and his presence at such conferences.

"We regard the positive refusal on the part of the rail lines to reduce freight rates on fresh fruits from the Pacific northwest to our natural market outlet as the greatest menace to the further upbuilding of this great industry in the Pacific northwest, and feel that the blame for that legalized robbery rests upon the Interstate Commerce commission who is permitting this plunder by the common carriers.

"As this committee is working on community districts alone, government statistics are not available. We find that Elgin and vicinity are raising only one-fifth of berries that could be consumed in that vicinity, and that the Attaherries No. 121, Gold Dollar, and New Marshall strawberries are the best commercial berries, and the best for home table use.

"We recommend for Elgin growers an increase in acreage. We also find that the Cumberland raspberry and the Cumberland black cap will do well in this vicinity if irrigation is obtainable. In the county in general we find that there is grown and raised around 15,000 crates of berries and further find that the stores of La Grande and Baker have shipped over 2000 crates a year for the past five years. This committee recommends that the county can increase the acreage of strawberries even for the home demand, and if we could raise Clark Seedlings in car load shipments could increase a big acreage. We find that the Bush berries will furnish the market completely for all needs such as red raspberries, black caps, and blackberries. Loganberries are not successfully raised in the county as they freeze back too much and therefore do not give as big a crop as our other berries, but could be raised for home consumption successfully.

"Owing to the fact that berries are produced in small acreage and they must be packed by so many different growers we would recommend that vigorous standardization methods be employed to regulate pack and quality. We feel that this can best be accomplished by the pooling of berries and thus marketing through a common agency. This policy we feel is the only one that will in a measure present prices cutting by the growers themselves and the dumping of poor quality berries on the market.

**Prunes.**  
"The existing conditions in the raising of prunes show that in about three or four years both the quality of prunes for fresh shipments as well as prunes for the dried product will be doubled. "The prunes from this section are grown principally for fresh shipment and to further the interests in behalf of this industry have adopted resolutions as follows: "1. That there be no more plantings done until we have secured new markets to care for what is being already raised and the increased amount soon coming into bearing. "2. Recommend raising highest quality possible by better methods of soil fertility, pruning and extreme care taken in packing only perfect fruit for shipment. "3. Freight rates are comparatively too high, as a car containing 22,000 pounds of net prunes requires approximately \$400 for freight and refrigeration to reach the eastern market. "4. The grower to realize anything on his fruit should have at least \$25 per ton, which would give him \$275 for the fruit. "5. There is much complaint some years from eastern consumers of fresh prunes that the first fruit shipped from some sections of Oregon are poor quality for the reason that they are picked and shipped too green. "6. We therefore recommend that some measure be taken by our state board of horticulture or legislation be enacted to require shippers to abstain from shipping prunes until the prunes have taken on the proper sugar content. "7. Cherries.  
"In view of the distinctive late ripening of the cherries in the Elgin district coming on immediately after the dove section and the consequent good yields from cherries now in that section it seemed advisable to recommend the planting of new cherry orchards in that section, to such an extent so as to be able to ship in carload lots; that the plantings be confined to sandy, deep, rich soil either loam, sandy or gravelly soil with a well-drained sub-soil, and preferably on north, northeast, east, and northwest slopes. That the planting include the following varieties: Lammers, Bings and Royal Anna, the number of trees in each variety being in the order named. (The Miller and Russellville Nursery company, and perhaps others, are propagating proven pollinizer nursery stock with proven pollinizer preferably Black Republicans in the ratio of 1 to 9). That the trees be planted 40 feet on the square. That special care during the period from 2 to 6 years of age be given not to extend the growing season of the trees too late into the fall with resulting winter injury. In planting cherries it should be remembered that there have been large plantings of cherries in the northwest and California. However, ours is a distinctive ripening period giving us a market of our own, and we can produce to the extent that the markets can absorb at that time. Due to the severe winter injury all people buying nursery stock are warned to examine all nursery stock to ascertain any damaged stock and not to accept stock if such injury is apparent. "8. Cherry growers of sections who are known to have had fruit fly had year to be forced to spray if not willing to do so. That growers are encouraged to use nitrogen fertilizers along with cover crops. Summer cover crops are alfalfa if irrigated land, fall and spring cover crops if non-irrigated. To ascertain if the orchards have live movement to better market proper pollination and proper and growing conditions."

## REPORT ON FRUIT HERE COMPLETED

(Continued from Page 1.)  
been lowered on an average of 25 per cent by gross carelessness in the handling, this creating a loss that would otherwise be profits. We recommend that more careful grading be done in order that our fruit may pass 100 per cent United States grade inspection rather than barely getting in after taking an allowance of 10 per cent tolerance. We condemn the practice of considering as one of the worst evils in the fruit business. We recommend pool selling where it can be agreeably arranged, owing to the fact that the low grades, when marketed, serve to stop consumption and lower the price of high grades down to a level with the lower grades; that as much of this class of fruit be used for drying and for the making of elder and vinegar as possible. Notwithstanding there is much acreage of unused lands in Union county that would grow first class fruit at very low costs, notwithstanding said lands being of little value for other crops, we do not consider it wise to encourage further increase in acreage for a period of at least five years.

"We recommend in the matter of export trade that only extra fancy and fancy grades be packed. Since

## For the Spring Dressmaker



**Ratine and Ratine Crepe \$1.10 to \$1.65 yd.**  
Beautiful new patterns in plaids, stripes and plain colors; excellent quality material.

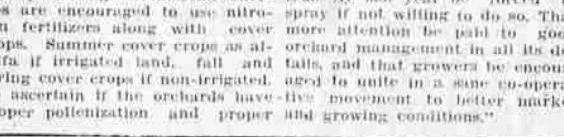
**New Picardy Voiles 75c yd.**  
One of the season's choice materials, in plain shades; fast color.

**Printed Voiles 50c yd.**  
An extensive gathering of this material in well blended colors and new patterns.

**Voiles La Suisse 50c a yd.**  
All colors with beautiful contrasting colored dots in a variety of patterns.

**Crepe Voiles \$1.25 to \$1.50 a yd.**  
Popular costume shades in striped plaids of dependable qualities.

**40 in. Alpaca Cloth \$2.95 yd.**  
In shades of tan with colored sport plaid striping of green and blue.



nursery stock are warned to examine all nursery stock to ascertain any damaged stock and not to accept stock if such injury is apparent.

light printing, to demand of the growers more thorough spraying for stags and the fruit fly, to pay special attention to the fruit fly spray and recommend that growers who are known to have had fruit fly had year to be forced to spray if not willing to do so. That growers are encouraged to use nitrogen fertilizers along with cover crops. Summer cover crops are alfalfa if irrigated land, fall and spring cover crops if non-irrigated. To ascertain if the orchards have live movement to better market proper pollination and proper and growing conditions."

## SHOES

The Largest Stock of Infants' and Children's Shoes Ever Shown in Eastern Oregon

Black or Tan Sandals \$1.58  
Girl's Black Patent Slippers \$1.98  
And in sizes 11 1/2 to 2 \$2.18

The highest grade shoe that can be bought at this price.  
New infants' and girls' hats to age 16, priced \$1.49 to \$4.50.

Small Boys' Caps \$1.50 and \$1.95—will wear longer and look better.  
Girl's and Ladies' Scarfs and Sweaters—buy them now for Spring wear.

## Norton's Kiddy Shop

Where Quality is Higher Than Price

## Blue Mountain Oregon Lumber

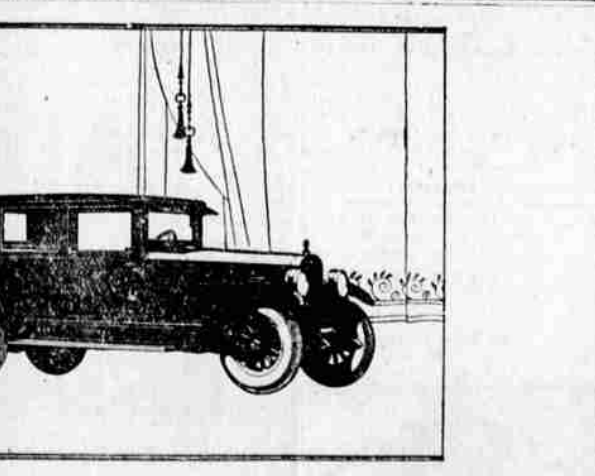
We Have Just What You Want in LUMBER, SASH AND DOORS AND SHINGLES. It will pay you to investigate our prices.

Bowman-Hicks Lumber Company  
MAIN & CHAIN AND BOX WOOD—PHONE MAIN 537  
J. L. MURPHY

**LET US HELP YOU--**  
With your electrical problems. WE ARE THE "CHECK SEAL" CONTRACTORS AND RETAILERS  
**H. & S. ELECTRIC**  
107 Depot St. Phone 393-W

**"The World's Greatest Buy"**  
Everyone Says It—Sales Prove It  
Hudson is not called "the World's Greatest Buy" for today alone. That is acknowledgment of ten years' constant refinement of a great car around the famous patented Super-Six principle. The largest production of 6-cylinder closed cars in the world give it unequalled value advantages.  
All now know that higher price can buy no smoother performance than Hudson's. It cannot buy more brilliant results in pick-up, power or speed. It cannot buy greater reliability or endurance. At today's prices need you own a lesser car? Can a costlier car satisfy you more?  
**HUDSON COACH \$1345**  
5 PASS. SEDAN \$1795 7 PASS. SEDAN \$1895  
Freight and Tax Extra  
**Ledbetter Garage**

**MARKET JOEL'S GROCERIES**  
PHONE MAIN 759  
FRESH VEGETABLES ARE AT THEIR BEST  
When you give us your order you may be assured that your groceries will be of the very best quality—and prices that are just right.  
All kinds of Fish Tomorrow—SALMON, CRAB AND HALIBUT  
All Kinds of Fresh Meat



**LET US HELP YOU--**  
With your electrical problems. WE ARE THE "CHECK SEAL" CONTRACTORS AND RETAILERS  
**H. & S. ELECTRIC**  
107 Depot St. Phone 393-W