



Aditorials

It May Interest You To Know

That— It is broadcasted on the "air" that American women will accept the long hair edict of their French cousins for evening only, as a majority of them seem most reluctant to give up the convenient, youthful bob for the present, at any rate.

That— This store organization is devoted to only one thing: an ever-increasing number of SATISFIED customers.

That— We are pleased to have you make use of this store's comforts and conveniences when down town, even though you don't wish to buy.

That— Waistlines are non-existent or placed low on hip. The Empire line is expressed in trimming only and reserved for evening.

That— Sleeves are long, short, or not at all. Long sleeves are mostly arm-fitting; a good proportion follow medium lines; a few are widened or flared at the wrist.

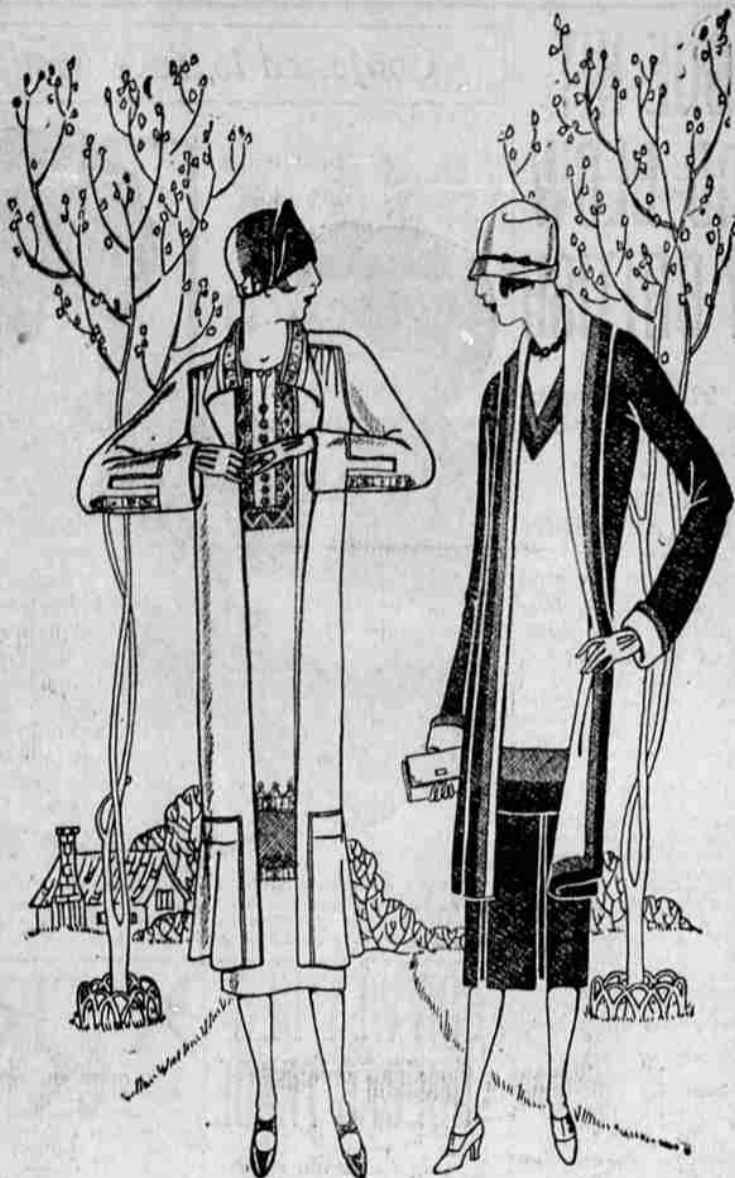
That— A lady in the store yesterday remarked that it would be necessary for her to "shorten" last year's coat if she expected to wear it "longer." Is it possible?

That— If you don't know what the Dennis Resolution is, ask Bruce Dennis. If you are against it, talk to Albert Hunter.

That— The Union County Economic Conference will have their final meeting at the High School Saturday morning at 10 o'clock. The public is invited to attend.

That— Skirts are short. The length should be regulated not by inches, but by the style of the garment and the proportions of individual figures.

ERNEST WATKINS, Manager.



SPRING Coats and Ensembles That Spell Charm and Economy

It's truly fascinating to turn the pages of Spring's fashion book! Here we catch glimpses of ensembles new and individual, which will be one of your most urgent wants for your Spring wardrobe, because they are suitable for so many occasions and form one of the smartest costumes ever designed, also the varied effects given to the new Spring wraps we are now showing with their pin-tuckings, pleats of all kinds and flares, will interest you and we will be happy to have you see what we now have.

\$16.50 to \$75



Shoes for the Hour

The new Spring costumes must stand on timely footwear—"Morning at Home"—"Afternoon"—"Sports" and "Ready for Evening." This calls for at least four types of footwear to harmonize with the various costumes. In our Shoe Department may be found any of the styles you will need to properly accompany the new Spring costumes.

\$4.50 to \$8.50

Spring Millinery Arrives

--at the peak of Fashion

Even the largest, widest-brimmed Hats favor the peaked crown. Soft, crushable felts in amber or pastel shades; supple taffetas, pliable straw affairs and sporty Bangkoks—all dent their crowns to a saucy peak and thereupon place pert feathers or piquant bows to call attention to this peak of fashion.

\$3 to \$20



Hills Department Store

"A Good Place To Trade"

MIRA SECOND LARGEST STAR

WASHINGTON (AP)—Measurements at the Mt. Wilson observatory of the Carnegie Institute have established that Mira, the remarkable variable star discovered by David Fabricius in 1594 in the constellation Cetus, is the second largest known star, there by displacing the noted Betelgeuse for that honor. With an angular diameter of about 250,000,000 miles, it is exceeded only by Antares, chief star of the constellation Scorpio, with a diameter of 400,000,000 miles. It is larger by about 25 per cent than Betelgeuse in the constellation Orion, which was measured for the first time about four years ago. Appearing but a speck in the sky to the naked eye, the measurements of Mira were made by Dr. Francis G. Pease with the 26-foot Michelson interferometer attached to the observatory's 100-inch telescope, the same with which the first measurements of Betelgeuse were obtained.

Announcement of the measurement was made today by the Carnegie Institution on the basis of advice from Mt. Wilson. "The results indicate," the announcement says, "an angular diameter for Mira of about six-hundredths of a second of arc, a value about 25 per cent larger than Betelgeuse. The most probable value of the distance is 155 light years. Assuming this distance, the diameter of the star is 250,000,000 miles. "The star varies greatly in light through a period of about 11 months, its brightness changing as much as 200-fold in that interval. The measurements of the star's diameter were made when the star was near its recent maximum. "The name Mira, or 'The Wonderful,' was given to the star soon after the discovery of its remarkable variations of light by Fabricius in 1594. It is the most noted example of a class of variable stars of similar type, of which there are about 150 known. They are deep red in color and are doubtless all stars of immense size, low temperature and exceedingly low density. "As a class these stars are moving very rapidly in the sun, some of them having velocities of more than 100 miles a second toward or away from the earth."

"Ma" in Clay



A bust of Governor Miriam A. Ferguson of Texas has just been completed by Enrico Gerraichio, sculptor. "Ma" took time from her official duties to pose.

Spring Usurps Role of Winter in Denmark

COPENHAGEN (AP)—This is the mildest winter Denmark has known in three centuries. Not once has the temperature fallen below the freezing point in the daytime, and the nights when this has been the case have been exceedingly rare. Generally the month of February is the coldest in Denmark; this year it has had the character of early spring. The mild winter has been blessed by everybody, except the furriers and the coal-merchants. Particularly the latter are complaining bitterly. They are losing a great deal of money they say. Cities like Holstenborg, Reval and Riga, which are usually buried in snow at this time of the year, have up to the present experienced nothing more wintry than a few nights of frost.

Duchess of York Idea Creates Work for Numerous Artists

LONDON (AP)—Hand painted slippers for evening wear, which are the vogue just now, have created work for numerous artists who had never thought of doing anything of the kind before but who have found that this kind of painting pays them better than turning out pictures. The novelty was introduced in London by the popular Duchess of

York who is one of the smartest of the smartly attired young women. The idea spread like wildfire, and was quickly taken up by other society women.

The foundation of these shoes is satin, mostly in delicate shades, exquisite models in old gold, bronze and black. One the toe cap, and tapering off along each side, neat designs are painted in delicate shades to match the color of the satin.

Jews of Palestine Organize To Support League of Nations

JERUSALEM (AP)—The Jews of Palestine, whose political status in the national home is safeguarded by the League of Nations mandate entrusted to Great Britain, are being organized as supporters of the league. A meeting was called recently in response to a suggestion from headquarters of the League of Nations union in Brussels to organize a Palestine society for the support of the league. The conference was attended by leading Jewish residents, including the editors of the Hebrew press, and it was decided to proceed with the formation of a Jewish League of Nations society. The straight and narrow path is plenty wide for its traffic.

Football's Popularity Makes It Rival of Baseball in Hawaii

HONOLULU (AP)—Football has become a close rival to baseball for popularity in Hawaii, according to paid attendance figures for both sports made public by J. Ashman Heavens, owner of Mollitt Park, Honolulu's shrine of athletics. For the short football season 73,000 persons paid admission to the park. These included the attendance at the one game played by Occidental College of California against the University of Hawaii and the games of Colorado University against the Pearl Harbor Navy team and the University of Hawaii.

Widow Cries for Joy

"I couldn't eat anything but raw eggs and sweet milk and was so weak I could hardly walk across the room. I would have been in my grave today if I hadn't taken Mayr's Wonderful Remedy which I did. When I think how I have suffered with my stomach and how good I feel now I cry for joy." It is a simple, harmless preparation that removes the catarrhal mucus from the intestinal tract and allays the inflammation which causes practically all stomach, liver and intestinal ailments, including appendicitis. One dose will convince or money refunded. At all druggists.—Adv.

Radio

SATURDAY, MARCH 14 Mountain Time Stations The following schedules of programs are given in Mountain time. To change to Eastern time, add two hours; Central time, add one hour; Pacific time, subtract one hour. KOA, Denver, Colo. (32.4), 5-12 midnight, dance music, Joe Mann and his Red-Head-Lane orchestra. Pacific Time Stations. The following schedules of programs are given in Pacific time. To change to Eastern time, add three hours; Central time, add two hours; Mountain time, add one hour. KFI, Los Angeles, Calif. (46.5), 2:20-4 p. m., Examiner's musical half hour; 4:45-7, Radiorial; 7:45, Lake Arrowhead dance orchestra; Mel Lemmon, leader; 7:45-8, the bookworm, Nancy; 8-9, Excelsior, Trojan Pipe, dance orchestra; 9-10, male and mixed quartet in comic opera favorites; 10-11, Packard Radio club; The Varsity trio, Ruth and Lilah Carlson, Way Watts of the A. E. F. Blackface trio, Barney Weber, tenor. KFOA, Seattle, Wash. (34.4), 6:45-8:15 p. m., Rhodes Department store program; 8:20-10, Seattle Times dance music; 10:05-11, Eddie Harkness and his orchestra, tenor; "Preparing for the Heavy Flow," George W. Phillips; Lionel L. Hartman, cornetist; James Harrison, baritone; 10-11, Henry Halstead's orchestra. KGW, Portland, Ore. (49.5), 10 p. m., Colburn's Melody Men. KHJ, Los Angeles, Calif. (405.2), 6-6:30 p. m., Art Hickman's Billmore hotel concert orchestra. Edward Fitzpatrick, director; 6:30-7:30, Little Series American history; Walter Sylvester Hertzler; Helen Pirie, Henrietta Poland, screen juveniles; Elina Roberts, Betty Roames, readings; Uncle John; 8-10, program, Wm. H. Hyatt, Inc., arranged by J. Howard Johnson; 11-2 a. m., The Lost Angels of KHJ, Charlie Wellman as Chief Lost Angel. KNX, Hollywood, Calif. (326.9), 5:45-6:15 p. m., Wuelitzer pipe organ studio; sports talk, Sid Ziff; 6:15-7:30, dinner hour music; 8-10, KNX feature program; 10-11, Abe Lyman's Coconut Grove dance orchestra from Ambassador hotel; 11-1 a. m., Hollywood night, presenting Constance Talmadge, famous cinema star. KPO, San Francisco, Calif. (420.3), 3:30-5:30 p. m., tea dansant, Gene James' Rose Room Bowl orchestra; 6:20, garden hints; 8-12, Art Weidner's dance orchestra.

An Ide HARROW STREET To own one is like owning a white silk shirt that won't wear out or turn yellow. \$5 ASH BROTHERS

Increases at the rate of 1,650 yearly, but which has been closed to the public more than a year due to lack of funds to erect a modern building, is owned by the state of Washington. The museum is on the University of Washington campus here in a structure that formed a part of the Alaska-Pacific-Yukon exposition in 1909. In the last two years 2,100 specimens in 123 collections have brought the total number of specimens to 105,000. They are valued at \$215,000 and illustrate the entire historical growth of the Pacific northwest. The public has been excluded from viewing the exhibits until they are in a new building.

Black Bears Broken to Harness LAWING, Alaska (AP)—Mrs. Nellie Lawing of this place does the sledging on her ranch with a team of young black bears. The span are well broken to harness. Contrary to the notions of some persons in the States, bears do not liberate at the first sign of winter, but are as active as domestic animals such as dogs.

One Secret of Beauty Is Foot Comfort Frequently you hear people say, "My feet perspire winter and summer when I put on rubbers or heavier foot-wear—then, when I remove my shoes my feet chill quickly, and often my hose seem wet through"—in every community thousands now use ALLEN'S FOOT-EASE in the foot-bath daily, and then dust the feet and shake into the shoes this antiseptic, healing powder. Full directions on box at all Drug Stores. Trial Package and a Foot-Case Walking Suit sent FREE, address ALLEN'S FOOT-EASE, Le Roy, N. Y.

SPECIAL! Blue-Crest Tissue TOILET PAPER 1,000 Sheets Full count 3 for 25c More for your money! THE L & L DRUG CO.

We Go Out of Our Way to Serve JUST RECEIVED! A shipment of Imported Cheese—Roquefort and Swiss Gruyere. THE CITY GROCERY Just Back of Carr's on Fir Street PHONE MAIN 572 RAY RAUM FREE DELIVERY

INCOME TAX SEASON IS HERE Have your Income Tax statement prepared by one who knows. Two years with U. S. Internal Revenue Department. H. M. MALONEY LA GRANDE, OREGON. Phone 598-R. Foley Building

Blue Mountain Oregon Lumber We Have Just What You Want in LUMBER, SASH AND DOORS AND SHINGLES It will pay you to investigate our prices. Bowman-Hicks Lumber Company MAIN 8 CHAIN AND BOX WOOD—PHONE MAIN 547 J. L. MUNHALL