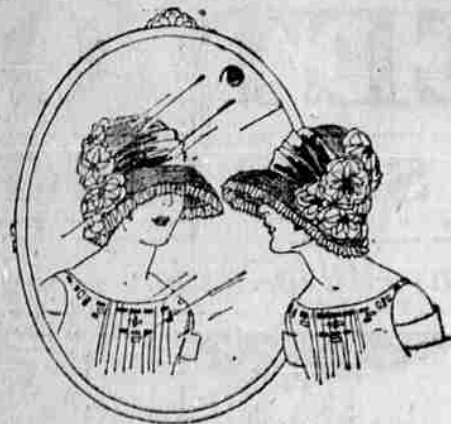




SMART Vacation HATS \$2.50 and \$5



To be smartly dressed you need a hat for every occasion—for sports, for tea and for the theater or dancing party.



A Good Place to Trade

HUMAN FACE NOW LONGER

LONDON, (AP)—The human face is not what it used to be. Professor Sir Arthur Keith declared recently before the dental board of the Royal College of Surgeons that a curious change is taking place in the processes of growth affecting the face which makes the modern face a half inch longer than the ancestral physiognomy.

Crofters from Hebrides To Settle Pacific Island VANCOUVER, B. C. (AP)—Settlement of Graham Island of the Queen Charlotte group in the Pacific Ocean near the province of British Columbia, with colonists from the Hebrides, off the coast of Scotland, is planned by the Canadian government.

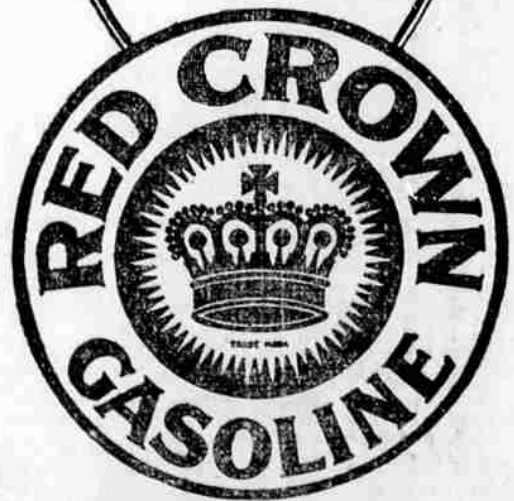
It is easy to interpret dreams. If one of them says she is lonely, that means her husband is out of town. A CRY IN THE NIGHT, gripping pains in the vitals, cramps, weakening diarrhoea—whether child or adult, immediate comfort and ease in CHAMBERLAIN'S COLIC AND DIARRHOEA REMEDY Pays to keep always on hand.

In La Grande THESE DEALERS SELL RED CROWN GASOLINE

- Auto Electric Service Co. La Grande, Ore. Gettings & Hanks La Grande, Ore. Brasher & Hess Carson, Ore. C. G. Craver Union, Ore. Union Hardware Co. Union, Ore. Weimer Bros. Cove, Ore. J. J. Waggoner Summerville, Ore. E. C. Gettings Elgin, Ore. Elgin Filling Co. Elgin, Ore. Five Points Service Station Hugard, Ore. Grande Ronde Lumber Co. Perry, Ore. Bowman-Hicks Lumber Co. Maxville, Ore.



These dealers and over 6,000 others on the Pacific Coast sell dependable Red Crown gasoline—uniform whenever and wherever you buy it. Saves carburetor adjustments and gives ready acceleration, 100% power and greater gasoline mileage. Wherever you motor you'll find the Red Crown sign and the red, white and blue pump. Head for these and get the old reliable favorite—Red Crown gasoline.



STANDARD OF QUALITY STANDARD OIL COMPANY (California)

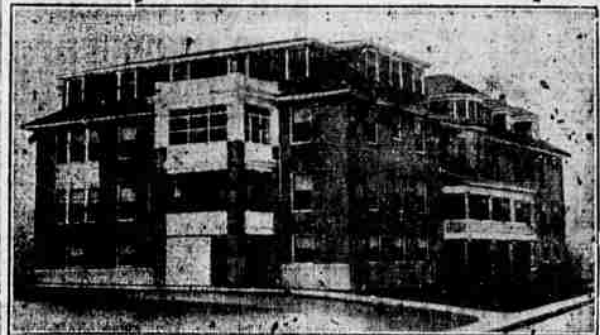


There's A Summer Suit Here For Every Man--

- A SUIT TO FIT EVERY FORM -A COLOR TO PLEASE EVERY TASTE. -A STYLE TO PLEASE EVERY EYE.

\$27.50 to \$45

SCRANTON & SHORT, INC.



Grande Ronde Hospital

A nonsectarian and ethical institution that does not advertise your sickness or broadcast your operations, but gives you service equal to any institution in the Northwest.

We employ only graduated nurses

READ THE OBSERVER CLASSIFIED ADS



WHITE SHOES

Vary in Style with Occasion So some of them are simply almost unto severity, as becomes the tailored mode, while some plan to accompany sports costumes and are more strikingly styled.

Such nice discrimination is sure to appeal to women who are exacting in the details of dress.

The Bootery Inc.

206 Depot Street Phone Main 118 "A Paradise for Tired Feet" Home of the Arch-Aid Shoe for Men and Women GROVER SMITH, Mgr.

SMALL FIRE AT WALLOWA

Blazing Timber Slashings on Cut-over Land Near Wallowa Under Control.

WALLOWA, Ore. (Special)—Following frequent small conflagrations, which have been burning in the slashings, on the cut-over land of the Bowman-Hicks Lumber company north of here, a fire

broke out recently. Reports from the fire state that it has been confined mostly to slashings. A crew of several men have been busy trying to prevent it spreading into the standing timber. H. N. Ashby, western general manager of the Bowman-Hicks company was here Thursday afternoon, looking over the situation and he expressed the opinion that the slashings were under control. The fire hazard is extreme at this time, due to the dryness of all down rubbish in the woods. Reports from the Promise section are to the effect that the fruit crop in that section was hard hit by the freeze of last week. E. E. McDonald, one of the large fruit growers of that section, reports that pears on his trees which had grown to the size of a man's thumb, were killed by the freeze. The cherry crop was also badly

damaged. This condition is a blow to the whole county, as well as Promise, as many people in the county depend on getting their fruit there instead of buying from fruit shipped in from other sections. Much of the alfalfa and spring grain in the valley section which was badly damaged by the freeze of last week, has begun to show signs of coming out and making a good crop yet. Many of the farmers began irrigating soon after the freeze, and in this way caused the grain to start growing up quickly again. In parts of the valley the first cutting of alfalfa for hay will be set back perhaps ten days or two weeks later due to being frozen down badly. Roy Gastin went to Tope creek the first of the week to help with piling fencing and other improvement work at John Anderson's homestead.

WTAM Will Broadcast From Cleveland, Ohio

James D. Preston, Washington newspaperman, political writer and member of the senate press gallery will be one of the republican convention notables to be heard from WTAM, broadcasting station of the Willard Storage Battery company. Preston has a nation-wide acquaintance among the country's leading politicians and statesmen and his intimate knowledge of political affairs and convention methods will make a valuable contribution to the radio information that WTAM will broadcast during the convention meetings. Preston will be in attendance at all meetings acting as "radio observer" and will tell the listening radio public of the movements of affairs. His information will be authentic because of his knowledge of the men and problems involved. Other nationally known speakers of political importance will also speak by way of WTAM's broadcasting.

USE SULPHUR TO HEAL YOUR SKIN

Broken Out Skin and Itching Eczema Helped Over Night

For unsightly skin eruptions, rash or blotches on face, neck, arms or body, you do not have to wait for relief from torture or embarrassment, declares a noted skin specialist. Apply a little Mentho-Sulphur and improvement shows next day. Because of its germ destroying properties, nothing has ever been found to take the place of this sulphur preparation. The moment you apply it healing begins. Only those who have had unsightly skin troubles can know the delight this Mentho-Sulphur brings. Even very itching eczema is dried right up. Get a small jar of Rowles Mentho-Sulphur from any good druggist and use it like cold cream.

The Home Plate

A. G. SPAULDING SPORTING GOODS Baseballs - Tennis - Golf McINNIS & JOHNSON Props

BE SURE TO SEE OUR

Special Sale

-OF-

Glassware

Oregon Hardware & Imp. Co.

SUGAR

PER SACK \$8.45

Strawberries

GET THEM THIS WEEK FOR CANNING We will please you if you phone us your orders.

J. G. Snodgrass

109 Depot Street Two Phones Call Main 75 No Charge for Delivery

VARIED USES FOR OREGON PRUNES SHOWN

Twelve ways of preparing prunes and 27 suggestions for using the Oregon dried prunes are given in a new state college extension bulletin written by Mrs. Jessamine C. Williams, professor of household science. "Nutritious, wholesome and economical," says Mrs. Williams of the dried prune. "It supplies energy and minerals essential to health and growth, particularly