

# GET ADEQUATE WATER SUPPLY

### San Francisco Will Get 400,000,000 Gallons of Water Every Day Four Years From Now.

SAN FRANCISCO, (AP)—Water from the Hetch Hetchy source, in the High Sierra-Nevada mountains of California, will flow 150 miles by gravity into the reservoirs of San Francisco within about four years, according to present plans. The enormous Hetch Hetchy project, involving in all its phases something like \$200,000,000, is nearing completion, though a vast amount of work still remains to be done.

In obtaining the water supply from the mountains, the city is instead to go into the power business by purchasing the existing distributing plants and selling light and power to the people directly. Other residents are opposing such a municipal business.

When completed the Hetch Hetchy supply will give San Francisco and adjoining communities 400,000,000 gallons of pure mountain water daily, a generous supply for a community of 4,000,000 inhabitants. Hetch Hetchy also will be capable of generating more than a billion kilowatt hour of electrical power annually. The city now uses about 370,000,000 kilowatt hours.

The efforts to secure Hetch Hetchy water date back to 1901. There was considerable opposition in the beginning, and the contest was carried through three national administrations. Finally a bill, giving the city all it had asked for, was signed in 1913, and work started in 1914.

One of the first steps taken by the city after obtaining the site was the construction of a standard-gauge railroad 100 miles long to haul supplies, equipment and materials. At the east end of the railroad now stands O'Shaughnessy dam, which turned the valley behind it into a beautiful lake seven miles long. It cost \$6,647,356.34. It is a monument to City Engineer M. M. O'Shaughnessy, whose withdrawal from a position paying him \$35,000 a year, to carry through the Hetch Hetchy project for San Francisco at a salary of \$15,000 lends a touch of sentiment to a matter made up otherwise of engineering and finance.

The great reservoir behind the dam will hold 67 billion gallons, the largest capacity of any city west of Chicago.

Hetch Hetchy Valley is at an elevation of 2,500 feet above sea level. Before it was flooded its floor was cleared of timber. The reservoir area covers 1,800 acres, with a drainage area of 294,000 acres. By wagon road 12 miles above Hetch Hetchy is Lake 12-canon, another reservoir holding nine billion gallons of water.

The water, after being used in two power plants, will pass into a tunnel, already completed, 18.2 miles long and ranging in size from 12 feet 4 inches by 12 feet 6 inches to 10 feet 3 inches by 10 feet 3 inches. The tunnel cost \$8,000,000. Below this tunnel will be Priest dam and the reservoir for the great Moanetta Creek power plants, which, when completed next June, will be able to produce 400,000,000 kilowatt hrs. of electricity annually, equalling the present total supply of San Francisco. The vertical drop of water for this plant will be 1,313 feet.

Ultimately the city will furnish 200,000 hydro-electric horse-power from the Hetch Hetchy system.

To bring Hetch Hetchy water to the door of San Francisco will require 87 miles of tunnel, 10 feet 3 inches in diameter, and 69 miles of large steel-pipe flume-way. The entire aqueduct will be thus enclosed. There will be no pumping, all the water flowing by gravity. The silt marshes on San Francisco bay will be crossed on trestles, and a tunnel will be built under the bay channel.

The city controls for the project, 120,000 acres of watershed, has bought 4,700 acres for reservoir sites and other purposes and acquired more than 150 miles of railroad right-of-way.

To carry on the work it was necessary to build a small city in the mountains, including an office building, hospital, railroad shops, warehouse and sawmill.



**WHO WOULDN'T GO?** Luis M. Perez has been sent to Cuba to succeed Porfirio A. Bonet, as commercial attaché of the Cuban legation. They're still toiling liquor down there. And the State Department thinks it has assigned this bright young man to a hard job. Whoopie!

### DECLARES MOVIES' HARMFUL

STOCKHOLM, (AP)—Studying the effects of moving pictures upon the young, particularly under ten years of age, Dr. David Lund, of the Prison Board, has reached among others the following conclusions:

That the average movie drama is harmful to the young child. They cannot distinguish between fact and fancy on the screen. Their imaginations are confused, and they are likely to mistake fact for truth. The distortion of reality and the frequent discrepancy between cause and effect tend to warp the child's reasoning power, and the spurious emotions in the average photoplay are disturbing to the soul life of the child.

Dr. Lund approves of educational films, however, and believes, also, that many of the fairy tale films are valuable for children.

# MANY ARE ILL NOW AT UNION

### UNION Ore. (Special)—Fred Osborne, agriculture teacher in the Union High School, has been away from his classes for several days on account of an attack of the "flu."

Fred Ratz, rancher living east of Union, is having considerable trouble with his eyes, the affection seeming to interfere with the sight.

Glenn Miller and his wife, who closed their schools near Hetch Hetchy, and returned to Union last week, owing to the serious illness of Mrs. Miller's sister, Leah Lay, had intended returning to their school work, but decided to remain here another week. Their schools will be closed for the week.

The Athletic Girls gave an invitation dance at the Union Hotel Tuesday evening. A splendid time was reported by those who attended.

Mrs. Agnes Paddock, local reporter for the Republican, is still unable to return to the office. She had been confined to her home for some time suffering from acute indigestion.

Mrs. Marquardt, county health officer, examining children in the Union schools.

F. R. Lee, La Grande grocer, was a business visitor in Union the first part of the week. County Agent Avery and Albert Hunter attended the Monday night meeting of the Commercial Club, and discussed matters relating to the wheat farmer.

The fish hatchery is stocking up with salmon and trout eggs for the 1924 season. Some of the salmon eggs have started hatching.

Mrs. Nettie Rich is suffering from a bad case of blood poisoning in her left hand as a result of running a splinter into the hand a few days ago.

Mrs. W. Halsey is running a temporary measles hospital at her home in South Union. She is caring for five cases, all her own children, and says she is a busy woman day and night.

# Generous



The new year thus far has proved very generous in the home of Thomas Mahoney, at John N. B. Look what it brought! They're doing nicely, thank you. So's the mother.

Final medallions of pierced arabesque ornament, tooled and enriched by a backing of bright blue and gold.

It is estimated that it took three years to finish and that its decoration from one-half to one million separate tool impressions were required to form the design.

**Finest Bound Book in World Placed in London Museum**

LONDON, (AP)—A book, claimed to have the finest binding in the world, is now on view at the Albert and Victoria Museum. It is a Persian work and dates from about 1430-1470, believed to have been executed for Mirza Shahruk, son of Timur, the Tartar conqueror.

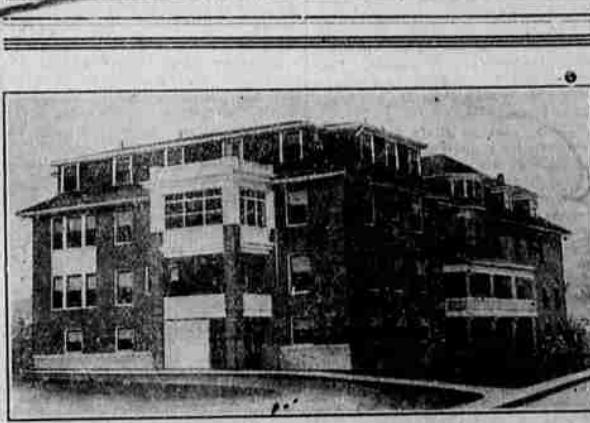
While of unassuming appearance, its beauty is in the perfection of its intricate tooling, much of it "blind," on the mellow brown leather. Within the covers are original medallions of pierced arabesque ornament, tooled and enriched by a backing of bright blue and gold.

**George Arliss**  
the world's foremost character actor is coming in **The GREEN GODDESS**

**Cutlery**  
See Our Window for Specials  
Pocket Knives  
Butcher Knives  
Scissors

**Skala Hdw. Company**  
Phon Main 33  
Roesch Building

VISIT OUR **JANUARY SALE** OF FINE FURNITURE  
**W. H. Bohnenkamp Co.**  
Where you always get a square deal.



**Grande Ronde Hospital**  
A nonsectarian and ethical institution that does not advertise your sickness or broadcast your operations, but gives you service equal to any institution in the Northwest.  
We employ only graduated nurses

Week-End Candy Special  
**PEANUT BRITTLE**  
29c Pound

**The Palace**



**The Best Place**  
Good schools, good churches, good homes, good wages. The best opportunity on earth for anyone to own a Home, a Business or a Farm. Just get that spirit into your soul, and you will soon be singing. "This is the place to build my Home—1924 is the year."

**The Grande Ronde Lumber Co.**  
1921 Builders Store  
Retail Dept. Main 732  
Quality Chain Wood, Always

**Plodding Along or Getting Ahead**  
SPEND all you make and plod along. Or save something every pay day and get ahead—you're bound to.  
The decision is yours.  
This decision—save some or spend all—is as important as any you'll ever make. For if you spend all, your chance for continued happiness is just one in ten.  
Make the right decision today

**United States National Bank**  
MEMBER FEDERAL RESERVE SYSTEM

**LA GRANDE IRON WORKS**  
MACHINE SHOP AND FOUNDRY  
All Kinds of Machinery, Automobiles and Tractors Repaired  
Overhauled and Rebuilt  
Acetylene Welding of All Kinds  
Cylinder Boring and Oversize Pistons  
Crankshafts, Pistons and Piston Pins Reground  
Give Us a Trial  
**D. FITZGERALD Prop.**

Don't Say "Bread" SAY **SUPERFINE**  
MADE WITH MILK  
For Sale at All Grocers  
**La Grande Bakery**  
Formerly McPherson Bakery  
La Grande, Ore.

**DETROIT SPRINGS**  
For Replacement  
You will find the one for your car at **Leighton's Welding & Machine Works**  
(Automotive parts)

**SUPPOSE**  
You try two-party service if you are dissatisfied with four.  
On two-party service you hear no ring except your own and avoid much of the inconvenience of waiting for a busy line.  
Although it costs the Company much more to furnish two-party than four-party service, yet the rate has been made only 25c higher so that the subscribers could avail themselves of this much more satisfactory service.  
**Home Independent Telephone Co.**

The New **Gwilliams' Electric Bakery**  
In Roesch Building—On Fin Street  
Wholesale Manufacturers of SUPERIOR QUALITY BAKERY PRODUCTS  
Our Pride—"Gold Crust Bread"  
For Sale by All Leading Grocers

**Blue Mountain Oregon LUMBER**  
SAY!  
Have you ever watched a race and realized the importance of the start? A good start saves just that much energy later on.  
That's the way with Home Building. Good lumber means less trouble in construction, less expense for upkeep, and more satisfaction in the long run.  
Get a good start when you build.  
TELEPHONE MAIN 8  
**Bowman - Hicks Lumber Company**  
For Mill and Box Wood Phone Main 547  
J. L. Munhall

TRY US On Delicious Apples Potatoes Onions  
We have a Real Bargain in Used **HUPMOBILE** TOURING CAR  
**DODGE TOURING CAR**  
**OVERLAND TOURING CAR**  
**Smith & Frees**  
Hupmobile & Cleveland Agts.  
1517 Jefferson Main 530