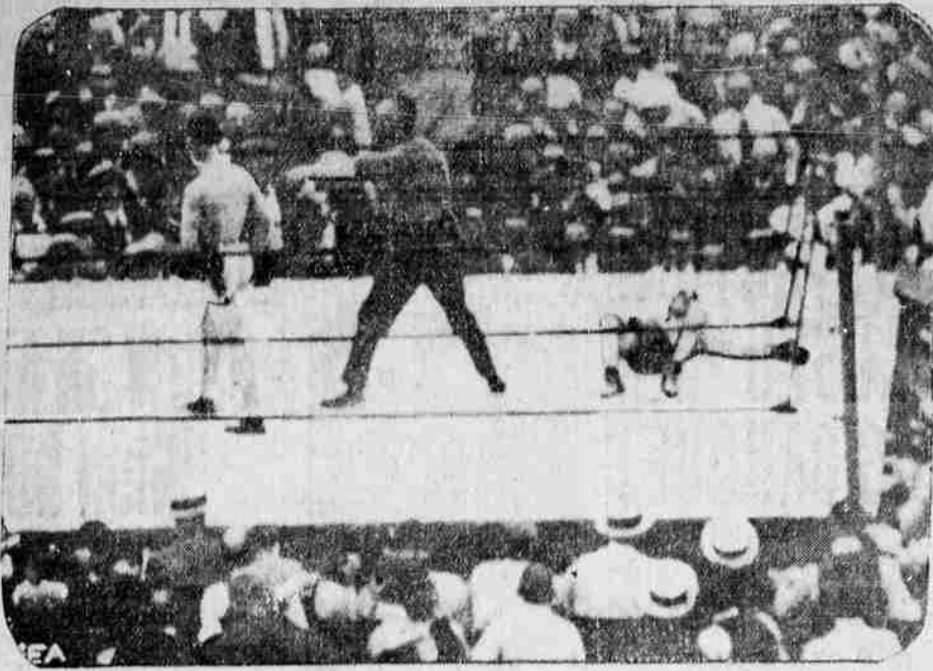


# Johnny Kilbane Takes The Count



The dramatic moment of the world's championship battle for fistic honors is shown in this photograph: Johnny Kilbane, for years featherweight champion of the world, flat on his back in the ring, as thousands looked on at the Polo Grounds, New York, June 2, and Eugene Criqui, French war hero, moving towards his corner as the referee points him out as winner. It was a right to the jaw that put the Cleveland champion to the floor; he rose to a sitting position at the count of five, but fell back and took the count of ten—his first defeat in years.

# HUGE DAM NOW MUCH HIGHER

## Roosevelt Dam, at Phoenix, Arizona, Has 15 Feet Added to Its Height.

PHOENIX, Ariz., June 6.—Roosevelt Dam, 280 feet high has had fifteen feet added to its height, there increasing its water storage capacity by 270,000 acre feet. This increase was brought about by the Salt River Valley Water Users' Association, as part of the Mormon Flat development of the full resources latent in the Salt River between Roosevelt dam and the diversion dam at Granite Reef.

The Roosevelt dam, which has played an important part in the development of the Salt River Valley, was built by the United States government in 1911 at a cost of \$4,991,000. Its length is 1,125 feet and its storage capacity, exclusive of the additional capacity created by the fifteen-foot height increase, is 425,225,000 gallons.

Today the spillways of Roosevelt dam carry nineteen huge steel gates, supported by concrete buttresses and anchored in the solid concrete by immense steel rods. The installation of these gates set a record for speed. The bonds of the Mormon Flat development were voted on January 4, 1923, and the work began the next morning. On March 1 the work had progressed so far that in the event of floods, the additional water contemplated in the development could have been saved. On April 1 the nineteen gates were in place. Each of the nineteen gates is fifteen feet high, twenty-one feet long and weighs nine tons.

These gates are installed in such a manner that in case of heavy flood and a high run off they may be elevated so that the crest of the flood may flow over the lips of the spillways. When the crest of the flood has passed and the height of the water in the lake is equal to the increased height of the dam the gates

are lowered, safely holding 270,000 acre feet of water more than would otherwise be possible.

The method of installing the gates was unique from an engineering standpoint. Ordinarily the gates such as that at the Roosevelt dam would have been held in place by thick concrete buttresses in order to give the new structure the necessary strength, figuring the required thickness of these buttresses at five feet in each case. Nine buttresses such as are in the south spillway, would have meant that the capacity of the spillways had been decreased by forty-five feet, which would have necessitated the widening of the spillways by blasting out fifty feet of the cliff at the end of the spillways. To overcome this necessity, the Water Users' Association constructed buttresses firm to the living rock. The steel rods, anchoring each buttress, weigh approximately a ton and a quarter, and combine with the entire structure in

each spillway the same strength as would have been obtained by tripling the thickness of the buttresses.

In addition to increasing the capacity of the dam the gates really complete the structure and give it a new appearance. The dam looks bigger than it did before, filling as it does the entire width of the canyon between the cliffs on each side.

The complete Mormon Flat development contemplates two other great improvements. One is the installation of a 7,000 horsepower generating unit in the power house at Roosevelt dam and the other is the building of a dam at Mormon Flat, twenty-seven miles below Roosevelt dam. With these two parts of the development completed, it is estimated that the Roosevelt dam powerhouse will generate approximately \$4,000 worth of power a day and will continue this rate of generation continuously throughout the year.

# New Head Lettuce Club Is Formed in Wallowa

WALLOWA, June 6.—Another club of lettuce growers has been formed, which will add from fifteen to twenty acres to the large acreage already contracted for this season. The new company consists of Miss Aura Coats, Orville McKenzie, Stan Shell and Scott McClaran. The young people have selected an especially suitable plot of ground on the ranch of Mrs. Hector McDonald and will start operations soon. About 220 acres will probably be planted in this section. The forty acres to be grown around Lostine will also be tributary to the packing plant established here. About 20 acres will be planted at Joseph and about 90 at Enterprise. Seeding will start next week in this locality.

# SPORT NEWS

## Bat Averages Take A Slump

### Team Average Falls 23 Points; Batters All Suffer Against Cove Excepting MaGee and Core.

Tight fielding and hard luck hitting caused the Pirates batting averages to shrink like the proverbial mail-order suit after their game with Cove Sunday which Cove won 3 to 2. Two players failed to suffer by the onslaught of classy gardening that the Farmers cut loose with—MaGee and Core, who both raised their averages a notch.

Team average likewise suffered. La Grande was 34 times at bat Sunday and got four hits which gave them a percentage of .118 for the day and brought their season average from .223 down to .210. At that La Grande wasn't weak at the bat. Of those 34 times up, three singles and one double was popped out and only five times did the Pirates fail to connect with the apple. Hitting into the infield and into the outfield the Pirates hardly ever managed to get anything by.

MaGee still leads the batting order with Core second and Vote third.

The complete list is as follows:

Player	GP	AB	H	Pct.
MaGee	5	15	7	.467
Core	5	18	2	.111
Vote	5	18	1	.056
Thelison	5	21	6	.286
T. Knight	4	16	4	.250
Crews	5	18	4	.222
Rosenbaum	5	21	4	.190
H. Knight	4	12	2	.167
Garrity	5	19	3	.158
Johnson	5	17	2	.118
White	1	2	0	.000
McLons	1	2	0	.000
Team	5	167	35	.210
Team (Sunday)	5	34	4	.118

## Have You Seen Gertrude? If Not Ask Jack Dempsey

GREAT FALLS, Mont., June 6.—A local newsman, with one ear cocked for the latest, overheard a cigar store patron say that he had been out to Jack Dempsey's training camp and seen Gertrude.

Dempsey's camp, excepting for the one hour given the public in the afternoon, is barred to the fair sex.

The newsman immediately got on the scent and hoofed it out to the camp in a hurry. Inquiries about Gertrude brought him face to face with a Holstein cow, browsing on the lawn. Gertrude is the champion's cow, and Jack does the milking himself.

WILLARD TO MEET FIRPO  
NEW YORK, June 6.—The proposed bout between Jess Willard, former heavyweight champion, and Luis Angel Firpo of South America, will be held at Boyle's Thirty Acres, Jersey City, July 12th if it was learned Monday night.

It was planned originally to hold the bout July 7, but because many fans desired to go to Shelby, Mont., to see the title bout between Champion Jack Dempsey and Tom Gills of St. Paul, which is to be held July 4, the change was made.

Richard announced that the semifinal of the Willard-Firpo bout will be between Floyd Johnson of Iowa and Jack McAuliffe, II, of Detroit. Willard knocked out Johnson and Firpo knocked out McAuliffe at the milk fund bouts May 12.

SARAZEN BEATS HAGEN  
GLASGOW, June 6.—Gene Sarazen defeated Walter Hagen, 2 up and 1 to lay, in an exhibition game over the Alexandria course Tuesday. Hagen made a marvelous drive of 310 yards on the first hole, landing on the green. The scores for 17 holes were: Sarazen 69, Hagen 71.

The Allies won't get far until they decide whether Germany is more useful as a debtor or as a customer.

## COAST BASEBALL

Club	Won	Lost	Pct.
San Francisco	40	24	.625
Sacramento	35	27	.565
Portland	31	31	.500
Vernon	29	31	.483
Los Angeles	30	31	.492
Salt Lake	28	32	.467
Seattle	26	33	.440
Oakland	24	37	.393

Los Angeles 5, Sacramento 3  
Sacramento—R. H. E. 5 10 2  
Los Angeles—R. H. E. 3 9 1  
Batteries: Lyons, Thomas and Byler; Hughes, Shea and Koehler.

San Francisco 11, Portland 4  
San Francisco—R. H. E. 4 14 2  
Portland—R. H. E. 11 18 1  
Batteries: Middleton, Yarrison and Daly; Courtney and Yelle.

Games Postponed  
Seattle-Vernon, game postponed.  
Seattle-Tracy, game postponed.  
Oakland-Salt Lake, game postponed.  
Oakland-Salt Lake, game postponed.

## MEET ON FISH CONSERVATION

(By Associated Press)  
SAN FRANCISCO, Cal., June 6.—An international treaty for the conservation and proper utilization of the fishery resources of the sea will be discussed at the second Pan-Pacific Scientific Congress, to be held in Melbourne and Sydney, Australia, August 23-27, according to Dr. Barton W. Evermann, director of the California Academy of Sciences here who has been invited to prepare a paper on this topic.

Dr. Evermann has made investigations which reveal that if the remnants of fur-seal herds, sea otters, whales and other fishery resources of the Pacific be given the same protection now afforded the Alaska fur seal, in a few decades they would yield an annual return of about \$500,000,000.

## THREE TIE IN CHESS

(By Associated Press)  
WOODLAND, Calif., June 6.—Rev. Leonard Turney, of this city, has been selected one of the winners of the First Masters' Chess Tournament, which was started in 1918 by forty expert players in North America. Rev. Turney, Claron French of Philadelphia, and J. E. Narvayway of Ottawa, Canada, were tied for first place.

## Papyrus Wins Briton Derby

EPSON'S DOWNS, Eng., June 6.—Papyrus, owned by R. Irish and ridden by the veteran jockey Steve Donohue, won the classic Derby here today. This is the third time in succession Donohue won the Blue Ribbon of the English turf, and is now entitled to wear golden spurs.

Donohue captured the prize with Hamorist in 1921 and with Captain Cuttle last year.

Touring up above the clouds does not appeal to us but it must be fine to travel up above the billboards.



The Original Food-Drink for All Ages. Quick Lunch at Home, Office & Fountains. Rich Milk, Malted Grain Extract in Powder, Tablet forms. Nourishing—No cooking. Avoid Imitations and Substitutes.

SEE YELLOWSTONE THIS SUMMER  
\$28.10 ROUND TRIP from La Grande THROUGH SLEEPER 3:25 a. m. Daily Beginning JUNE 10th  
J. L. Keeney, Agent  
UNION PACIFIC POPULAR AND DIRECT YELLOWSTONE ROUTE

## BETTER HOMES ARE LARGELY A MATTER OF Better Furniture

Not necessarily the highest-priced, but good, reliable and correctly-priced furniture—which is the kind we have on display in our showrooms.

WE INVITE COMPARISON

### W. H. Bohnenkamp Co.

Four Floors of Fine Furniture

fresh from the factory  
FRESH TOBACCO  
now 15¢  
ROLL YOUR OWN WITH  
Ria-La Croix Papers Attached

Mildred Lovett  
Teacher of  
Piano  
Theory and Music History  
Phone 352-J Studio  
Atter 2 P. M. 1342 Penn Ave.

COURTESY AND SERVICE

### Thursday Menu

SOUP	PRICE
Cream Tomato	15c

SANDWICHES	PRICE
Mixed Ham	15c
Lettuce	15c

SALAD	PRICE
Combination Vegetable	49c
Banana	25c

DESSERT	PRICE
Strawberry Pie	15c
Strawberry Shortcake	25c
Sundae	25c

The Palace

## They Are Betty Wales Dresses But They Are Imported

Hand-made, hand-drawn wash frocks—designed by Betty Wales and produced abroad under Betty Wales supervision.

BETTY WALES, designer and maker of dresses that combine style and value, needs no introduction to the women of America. But Betty Wales announcing herself as an importer has a startling message.

We are now showing the first of the Betty Wales importations—beautiful, dainty dresses of linen, voile and ratine—in all sizes and colors. Some are tailored dresses. Some are hand-embroidered. All embody the perennial charm of hand-drawn work and all are completely hand-sewed.

The genius of Betty Wales has made it possible for us to offer these imported dresses at really modest, domestic prices. We are sure you will not fail to inspect and appreciate this remarkable collection.

Every Betty Wales Garment is individually guaranteed.

106, 100, 108, 150, 152, 160, 166, 184

# PUTMAN'S

Closed Tomorrow Afternoon  
LA GRANDE DAY AT STOCK SHOW

## ORANGES LEMONS GRAPE FRUIT

From the Heart of the World's Greatest Orange Empire

In no other section of the world do oranges, lemons and grape fruit reach the high point of perfection of those produced in California. Every condition is ideal for the production of quality fruit. Continual sunshine and clear skies during the growing season develop the very finest flavor and generous sizes.

Remember that we ship direct from "Orove to Consumer" thus assuring absolutely fresh fruit full of health-producing, energizing qualities.

### FOUR SPECIALS.

Send Us \$2.00 and We Will Ship You Direct Either One of These Four Specials

- ONE CRATE OF ORANGES—Holding from ten to twelve dozen of oranges, according to size.
- ONE CRATE OF LEMONS—Holding from twelve to fifteen dozen of lemons, according to size.
- ONE CRATE OF GRAPE FRUIT—Holding from three to four dozen of grape fruit, according to size.
- ONE COMBINATION CRATE—Holding four dozen oranges, four dozen lemons, one dozen grape fruit.

Remember that fruit, with its healthful mineral salts and natural light bulk, supplies just those elements most needed to regulate the body after the long winter diet of heavier foods.

Serve fruit in some form every day. It's easily and economically obtained under our plan. CO-OPERATIVE enables you to serve the very choicest fruits—whenever you want them—at truly economical cost.

## Co-Operative Fruit Exchange

457 West Ocean Avenue  
LONG BEACH, CALIFORNIA  
A Post Card Addressed to Dept. "H" Will Bring to You an Interesting Booklet "Dried Fruits"