

LUMBER DEMAND IS VERY HIGH

The danger of a runaway lumber market is becoming very real, says the American Lumberman. Realizing the harmful effects it would have on trade, the industry is making every effort to avoid it, but the situation is shaping itself as to force the market out of bound. Demand is record breaking, and continues to expand. During the second week in January, normally one of comparative dullness, bookings by subscribers to the Southern Pine Association reached the second highest point in years, while all records for orders and shipments in the Douglas fir industry were smashed. Manufacturers of other softwoods make similar reports.

Great countrywide building activity during the coming spring and summer is forecast, while the general industrial outlook was rarely better. This indicates that lumber consumption this year will be great. Unsold stocks are rapidly diminishing and buyers are rushing into the market in order to cover their future requirements as far as possible. Prices are moving upward steadily and no weakness that may cause a reversal of the trend is discernible anywhere.

The heaviest softwood demand is for building items, due not only to prospective requirements but also to the fact that current retail sales are unprecedentedly heavy for this season. Railroad, oil field and other industrial requirements expand the mills' order files considerably, and the export movement is sizable.

Hardwood manufacturers state that they sold far more lumber during the first three weeks of this month than they did during the first six weeks of 1922. The automobile industry continues to buy and contract for enormous quantities of hardwoods. Exhibitors at the recent furniture shows have returned with large sheaves of orders, and the furniture industry's spring and summer production is likely to be the largest in history. Flooring and interior trim manufacturers, in the face of a voluminous current business, are making every effort to build up manufactured stocks in preparation for spring. Box and crating makers report continued excellent business; miscellaneous consumers have needs that aggregate into an important volume, and the export demand is considerable. The shortage of dry stocks is becoming intensified, the movement of green lumber is growing and prices are advancing steadily.

OREGON TRACK CALL ISSUED

EUGENE, Feb. 1. — Issuing the earliest track call in the history of the University of Oregon, Bill Hayward, the veteran track coach, is engaged in forming the foundations for this year's varsity track team. More than 50 aspirants for the varsity and frosh squads are reporting each evening. Dressed warmly in outdoor training togs, "Bill" keeps his proteges outside except on evenings when the weather is so disagreeable as to force the squad to retire to the gymnasium for a work-out.

Prospects for both the varsity and frosh teams are bright this year. Half a dozen varsity letter men have reported for early practice and an unusually large number of prep-school stars are working for the freshman squad.

For the first time in many years Oregon will meet California on the track and field this spring. The two teams will vie in Eugene May 12.

More interest than usual is being displayed in the annual interschool and inter-fraternity meets which will be held shortly after the opening of the varsity season.

Following is the varsity schedule:

- April 23—Washington Relay Carnival, Seattle.
- May 5—University of Washington dual meet, Seattle.
- May 12—University of California, Eugene.
- May 19—Dual meet with O. A. C., Eugene.
- May 26—Pacific and Northwest conference meet, Pullman.

Diva From Farm



Three years ago, Ida Sylvania, daughter of a Pennsylvania farmer, used her voice to yodel and call home the wandering cows. Music teachers heard her. She was sent to Italy and has now signed contract with Milan and Naples opera houses.

Steeplechase Thrills



Here is a thrilling scene at the Crawley Steeplechase, England, showing Major F. Scott Murray's "Gerald L," the winner, taking the water ahead of Lady Mitchellson's "Wafer."

JAPS COMPLAIN OF HIGH RATES

(By Associated Press.)
YOKOHAMA, Japan, Jan. 2. (By Mail).—High postal rates charged by the Japanese government which have for long been bitterly resented by foreign businessmen here have at last been attacked by the Japanese themselves. The Japanese Exporters' association has made representations to the government pointing out that while the United States and Britain some time ago raised foreign postage rates slightly in accordance with the resolution passed by the International Postal Convention held at Madrid in November 1920, the Japanese government in January this year doubled the foreign postage. With the exception of France and Germany, no country has raised the foreign postage to so great an extent as Japan.

Average Height of Human Race.
The average present height of the human race is about 65 inches, but the average is produced by measuring both the races which are exceedingly tall and those which are exceedingly short. The so-called gigantic races, of which the Scotch of Galloway still stand at the head, are offset by the little peoples of central Africa.

Women Need Swamp-Root

Thousands of women have kidney and bladder trouble and never suspect it.

Women's complaints often prove to be nothing else but kidney trouble, or the result of kidney or bladder disease.

If the kidneys are not in a healthy condition, they may cause the other organs to become diseased.

Pain in the back, headache, loss of ambition, nervousness, are often times symptoms of kidney trouble.

Don't delay starting treatment. Dr. Kilmer's Swamp-Root, a physician's prescription, obtained at any drug store, may be just the remedy needed to overcome such conditions.

Get a medium or large size bottle immediately from any drug store.

Honey, if you wish first to test this great preparation send ten cents to Dr. Kilmer & Co., Binghamton, N. Y., for a sample bottle. When writing be sure and mention this paper.

Extra Fine

Three-acre improved tract just out side the City Limits, one block from the paved highway. Will consider trade for house in town.

A five-acre tract, improved and going at a bargain price, and good terms, one-half mile from City Limits and paved highway.

A five-acre tract in May Park. This is one of the best improved and paying properties in the valley. Extra good.

A ten-acre tract in May Park, with extra good improvements. Irrigated, best of land and fruit. Eight-room modern house.

Three fine modern homes. Well located, beautifully furnished, want to sell complete. If you want something extra good let us show you these fine homes.

Pyramid Land Co.

FEMINISTS WIN IN ELECTIONS

(By Associated Press.)
MONTREAL, Que., Jan. 5. (By Mail).—Feminists of the Province of Quebec hail as a victory for their cause the appointment of two women as commissioners of the Superior court for the judicial districts of Montreal. The ruling is described as the first step toward admitting women to the Bar of the Province, for which a battle has been waged for many years in the legislature.

The first women to be named commissioners are Gertrude Sheridan and Gertrude Doyle, public stenographers. The powers conferred by their appointment include the right to receive within the judicial district of Montreal affidavits which may be used in any court in any district of the province. Affidavits thus received have the same force as if they had been received in court.

The women's petition for commissions was rejected by Mr. Justice Campbell Lane when first presented to Superior court here. The judge took the ground that there was no precedent for appointing women, and he declined to create one. A few days later the petition was presented again, this time to Mr. Justice MacLennan, who granted it at once.

Proves Man's Worth.

When sales of any article exceed in volume that of any competing article, price being equal, it is regarded as the best value for the money. So when a man is continually given preference by his fellows his worth to society is conceded. Leadership proves dependability.

A premier probably doesn't find cabinet making difficult once he learns how to handle wood.

Led in Scientific Nurse Training.
Frieder, at Kaiserwerth, Germany, opened the first scientific training school for nurses in 1836. Florence Nightingale was trained at his establishment, and introduced his methods into England.



Watch the Dividends on a Concrete Street

To the taxpayer—because there are practically no repairs. Maintenance is built into Concrete pavement.

To the motorist and the truck owner—from the better service, slower car depreciation, higher gas mileage.

To the property owner—from the increased value of his property.

To the merchant, from the trade a good street draws and keeps.

To the whole community—from the safer, quicker, uninterrupted traffic of every sort assured by this skid-proof, permanent pavement.

A Concrete Street means continuous dividends—not perpetual expense.

Our Booklet K-4 tells other interesting things about Concrete Streets. Write for your copy.

PORTLAND CEMENT ASSOCIATION

Gasco Building
PORTLAND, OREG.
A National Organization to Improve and Extend the Uses of Concrete
Offices in 23 Other Cities

Superfine Bread

made by

Macpherson's Bakery

La Grande, Oregon

Let Miss Lotta Values Save You Time, Labor and Money

Buy Your Spring Coat Here and You Are Assured Complete Satisfaction

Our First Shipment of Spring Coats has just arrived, with new shipments coming in almost daily. All marked at surprisingly low prices.



Is An Advertising Investment Good Collateral

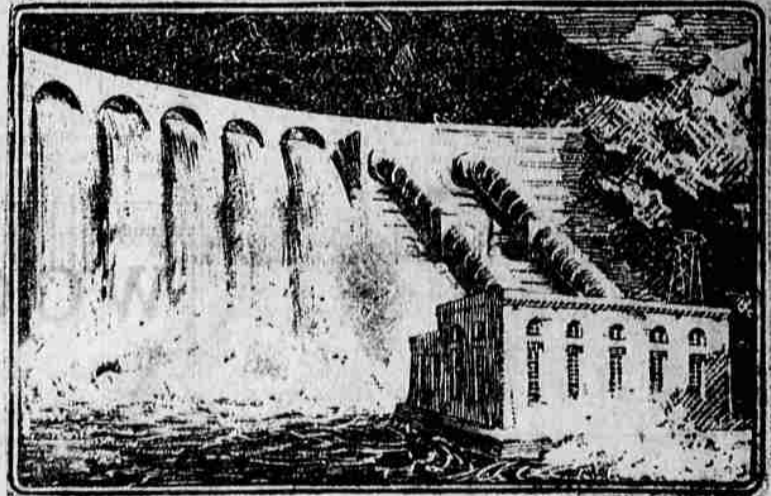
Your money deposited in banks is loaned by bankers upon the security of merchandise whose value has been created and is maintained by advertising.

Is the created more substantial than its creator—the product than the tool?

More and more, bankers are recognizing the essential verity of this principle—that money can be loaned as safely upon a sound advertising investment as upon other collateral which advertising has developed and maintained.

La Grande Evening Observer

OBSERVER ADVERTISING will bring results



Dam the Mighty Flow of Your Expenditures

A savings account in this bank is to your income what a great dam is to a mountain torrent. The dam piles up and turns to useful power the mighty rush of energy that is in falling water.

Your savings account will give life and power to the stream of your dollars. Their energy is not wasted here, but is working for you now and in the future.

One dollar will start you

UNITED STATES NATIONAL BANK

La Grande, Oregon
MEMBER FEDERAL RESERVE SYSTEM