

# COUNCIL GETS YEAR STARTED

(Special to the Observer)  
NORTH POWDER, Jan. 24.—The council is starting out with a vim that promises to get things moving lively.

The bill for letting the mayor sign a contract to sell water to the O-W railroad was read for the first time and it looks as if it will pass. The street and building committee were ordered to look over all buildings belonging to the city and such as did not conform with the rules and regulations would be torn down.

An inventory will be taken of all buildings owned by the city. More lights will be put on the streets as some places are very dark.

Chris E. Johnson was unanimously appointed to act as mayor pro tem in the absence of Mayor Russell.

More fire apparatus will be bought as the amount on hand was not enough to handle a very large fire. A municipal will soon be appointed, but as yet no one has been selected for this place.

Fred Mann shipped two cars of cattle to Portland on Saturday and James Wilson sent a car of cattle. Chris Peterson shipped a mixed car of hogs and cattle and the Bidwell Evans Grain shipped a car of hogs. Mr. Hanna led his cattle to the Jim Belton ranch which is noted throughout this section for its fine alfalfa hay.

These cattle were in fine condition. In spite of low prices of livestock, North Powder is shipping right along.

Mr. and Mrs. Leo Belton of this city received notice of the marriage of their son, John Belton, to Miss Arlene Gundlock of Laramie, Wyo., on January 23rd. Mr. Belton was raised in North Powder and is well known here. He has worked for the P. E. E. company for some years.

The young couple will make their home at Laramie, Wyo.

**Social Events.**  
The Masonic wives entertained the lodge at a "999" card party on Thursday evening. Seven tables were set and games were played until midnight. Mr. and Mrs. Chris E. Johnson won the high scores for lady and gentleman, and Mrs. P. A. Bidwell and Albert Brennan won the booby prize for the lowest score.

After the card games a two-course lunch was served and after some time spent in social conversation the crowd went home after another evening spent in fun and frolic.

**Rebekah Lodge Has Waffle Feed.**  
Ladies of the Rebekah lodge surprised their friends with a waffle feed after the close of one of their regular lodge sessions. The refreshment committee announced making waffles and that at a large scale time to satisfy the appetite of the ladies here. The affair was a success and there will be more waffle feeds in the future.

G. G. Wolf and W. H. Lynch was in North Powder on Thursday, looking over the best weather. The conditions were warm weather in a heater so concern as it may interfere with the 12-inch ice that has nearly always been harvested at North Powder.

A number of the local people have filled their ice houses and are now ready for the summer. They report that they have the ice.

Charles Harrison returned to Hot Lake last week. He took treatment at that place for rheumatism some time ago and returned home feeling better. A return of his old trouble necessitated his going back again.

John Dickinson is back in school again after being out a week on account of sickness.

Gus Taylor returned last week from a visit to Texas and his old home town. He was gone for a month and had the time of his life.

**Dogs Kill Sheep.**  
Russell Jones and Owey Lee brought into town on Sunday evening a band of 1400 sheep. These were put into a corral in town for the night. Some time during the night dogs broke into the flock and killed several and caused them to trample each other until 162 sheep were dead. What makes the loss

## RED PEPPER FOR COLDS IN CHEST

Ease your tight, aching chest. Stop the pain. Break up the congestion. Feel a bad cold loosen up in just a short time.

Red Pepper Rub is the cold remedy that brings quickest relief. It cannot hurt you and it certainly seems to end the tightness and drive the congestion and soreness right out.

Nothing has such concentrated, penetrating heat as red peppers, and when heat penetrates right down into colds, congestion, aching muscles and sore, stiff joints relief comes at once.

The moment you apply Red Pepper Rub you feel the tingling heat. In three minutes the congested spot is warmed through and through. When you are suffering from a cold, rheumatism, backache, stiff neck or sore muscles, just get a jar of Rowles Red Pepper Rub, made from red peppers, at any drug store. You will have the quickest relief known.

LA GRANDE  
**CONCRETE PIPE COMPANY**  
PERMANENT AS THE PYRAMIDS  
Manufacturers of  
Sewer Building  
Water Foundation  
Irrigation Silo  
Culvert Chimney  
Drainage

# Pipe Blocks

WELL CURBING—SEPTIC TANKS  
Phone Main 120 Factory Island City

# CALIFORNIA TO AMEND RULING

Wife and Husband May Be Placed on Equal Footing in Willing and Inheritance

(By Associated Press)  
SACRAMENTO, Cal., Jan. 24.—Amendment of the California civil code so as to place the wife on an equal footing with the husband in willing or inheriting community property, is part of the 1923 legislative program sponsored by the California Federation of Women's club.

Community property is that acquired by either husband or wife, or both, after marriage. As the state law now stands, the wife's interest in community holdings, in the language of the state supreme court, is a "mere expectancy." In every state where the community property system is in vogue, the wife has some testamentary power, except in California.

Under an amendment to be introduced by Senator Ed. P. Sample of San Diego county, and having support of the California Bar Association, a wife also would have the right to will her half of the community property, and if the husband or wife dies without a will, the entire community property would pass to the survivor.

Through its legislative department, the federation is on the alert for any adverse legislation concerning the inheritance of community property.

Under an amendment to be introduced by Senator Ed. P. Sample of San Diego county, and having support of the California Bar Association, a wife also would have the right to will her half of the community property, and if the husband or wife dies without a will, the entire community property would pass to the survivor.

Through its legislative department, the federation is on the alert for any adverse legislation concerning the inheritance of community property.

# SEES RAINBOW IN THE NIGHT

(By Associated Press)  
TACOMA, Wash., Jan. 24.—A rainbow at night was recently reported here to have been seen by a party of motorists. The moon came out from behind a cloud at midnight while rain was falling, and a great rainbow appeared across Puget Sound.

"The rainbow was as brilliant as one seen during the daytime," one of the observers reported. "It was equal to a view of the Northern Lights, and was one of the finest sights that could be imagined."

Savannah News: "Wring out the old" and then dry up about the past.

# TRY SULPHUR ON AN ECZEMA SKIN

Keets Eczema and Overcomes Trouble Almost Over Night

Any breaking out of the skin, even fiery itching eczema, can be quickly overcome by applying Mentho-Sulphur, declares a noted skin specialist. Because of its germ destroying properties, this sulphur preparation instantly brings ease from skin irritation, soothes and heals the eczema right up and leaves the skin clear and smooth.

If eczema fails to relieve the torment without delay, sufferers from skin trouble should obtain a small jar of Rowles Mentho-Sulphur from any good druggist and use it like cold cream.

# Small Tracts Wanted

I have considerable inquiry for small improved acreage, in and adjoining the city. Also for 10, 20, 40 and 50 acre farms. Those having this kind of property who desire to sell, if they will price their property right, I can assure you that I can get results.

My list price for this class of property is the lowest I have had for two years. I would like to have immediate listings, as I am sure I can give you service.

Six-room home, modern, garage, cement sidewalk. Just off hard-surfaced street. Price \$2,000.00. Terms, \$200.00 down and \$30.00 per month.

One-acre tract with good four-room house, full basement, chicken house, pumping plant, work shop. This place is just outside of city limits. Price, \$1500.00. Terms, \$400.00 cash and balance at \$25.00 per month. Will consider small automobile as part first payment.

**Geo. H. Currey**  
Real Estate Insurance

# CALIFORNIA TO AMEND RULING

Wife and Husband May Be Placed on Equal Footing in Willing and Inheritance

(By Associated Press)  
SACRAMENTO, Cal., Jan. 24.—Amendment of the California civil code so as to place the wife on an equal footing with the husband in willing or inheriting community property, is part of the 1923 legislative program sponsored by the California Federation of Women's club.

Community property is that acquired by either husband or wife, or both, after marriage. As the state law now stands, the wife's interest in community holdings, in the language of the state supreme court, is a "mere expectancy." In every state where the community property system is in vogue, the wife has some testamentary power, except in California.

Under an amendment to be introduced by Senator Ed. P. Sample of San Diego county, and having support of the California Bar Association, a wife also would have the right to will her half of the community property, and if the husband or wife dies without a will, the entire community property would pass to the survivor.

Through its legislative department, the federation is on the alert for any adverse legislation concerning the inheritance of community property.

Under an amendment to be introduced by Senator Ed. P. Sample of San Diego county, and having support of the California Bar Association, a wife also would have the right to will her half of the community property, and if the husband or wife dies without a will, the entire community property would pass to the survivor.

Through its legislative department, the federation is on the alert for any adverse legislation concerning the inheritance of community property.

# The Oriental Herb Co.

With their famous Chinese roots, herbs and barks is specializing in treating the diseases of men and women, such as asthma, kidney cancer, pneumonia, nervousness, stomach, piles and blood disorder. Their cure and the medicine have long been recognized and praised by patients because their health has been restored to normal condition. If you are ill why not call and see us. Consultation free.

**Oriental Chinese Herb Company.**  
11 South Fourth Ave.,  
Yakima, Wash.

There's a touch of refinement with EDISON MAZDA LAMPS.

**H. & S. Electric Company**  
Wiring, Repairing, Appliances, Supplies and Service  
105 Depot St. Phone 393-W

# Superfine Bread

made by

**Macpherson's Bakery**

La Grande, Oregon

# No Middleman in the Electric Business

You buy a simple article and the price makes you gasp. "Who's getting the big profit?" you ask. "I'm not," replies the retailer, and he points to the wholesaler, the wholesaler to the jobber, the jobber to the manufacturer, and the manufacturer to the laborer.

The same old chain, with profit on every link. Is all business like that? Must we pay ten, three, or four profits on everything we buy?

No, indeed. Here is your electric company selling you service, delivering current direct from the plant, right to the point of use in your home without intermediate middlemen's profits and with every item of its cost regulated by your trusted representatives.

While some merchandising profits range from 20 per cent. to 50 per cent., we are allowed to make but one profit, and this profit not to exceed 4 per cent. on money actually invested. Frequently it is less.

What other business renders so complete a service at so small a return?

**Eastern Oregon Light & Power Co.**

# OLD TREASURE LODE IS FOUND

(By Associated Press)  
SALT LAKE CITY, Jan. 24.—John Q. Critchlow of Salt Lake City, president of the Panama Sugar company and a director of the railroads of Panama, has unearthed archaeological treasures in the ruins of a Pueblo on the side of El Volcan de Chiriqui, an ancient volcanic mountain in Panama which has an elevation of 11,600 feet, according to word received here from Mr. Critchlow.

El Volcan de Chiriqui, said to be the only mountain in the world where an observer can look upon the waters of the Pacific and Atlantic oceans in a single scope of the eye, was chosen by the Maya people for a place of these wonders of ancient art. Mr. Critchlow from

depth of six, ten and fifteen feet below the surface, uncovered enormous workings in solid gold, ancient pottery and tools covered with hieroglyphics.

Mr. Critchlow stated the treasure had just been tapped and he said he plans to return to the mountain in February to dig out the complete ruins of the ancient Maya civilization.

Footleggers of Pendleton, who have been using their children to peddle or distribute liquor, are the chief objects of attention by the officers of the city and county at the present time.

Footleggers of Pendleton, who have been using their children to peddle or distribute liquor, are the chief objects of attention by the officers of the city and county at the present time.

Footleggers of Pendleton, who have been using their children to peddle or distribute liquor, are the chief objects of attention by the officers of the city and county at the present time.

Footleggers of Pendleton, who have been using their children to peddle or distribute liquor, are the chief objects of attention by the officers of the city and county at the present time.

Footleggers of Pendleton, who have been using their children to peddle or distribute liquor, are the chief objects of attention by the officers of the city and county at the present time.

Footleggers of Pendleton, who have been using their children to peddle or distribute liquor, are the chief objects of attention by the officers of the city and county at the present time.

Footleggers of Pendleton, who have been using their children to peddle or distribute liquor, are the chief objects of attention by the officers of the city and county at the present time.

Footleggers of Pendleton, who have been using their children to peddle or distribute liquor, are the chief objects of attention by the officers of the city and county at the present time.

Footleggers of Pendleton, who have been using their children to peddle or distribute liquor, are the chief objects of attention by the officers of the city and county at the present time.

Footleggers of Pendleton, who have been using their children to peddle or distribute liquor, are the chief objects of attention by the officers of the city and county at the present time.

Footleggers of Pendleton, who have been using their children to peddle or distribute liquor, are the chief objects of attention by the officers of the city and county at the present time.

Footleggers of Pendleton, who have been using their children to peddle or distribute liquor, are the chief objects of attention by the officers of the city and county at the present time.

Footleggers of Pendleton, who have been using their children to peddle or distribute liquor, are the chief objects of attention by the officers of the city and county at the present time.

Footleggers of Pendleton, who have been using their children to peddle or distribute liquor, are the chief objects of attention by the officers of the city and county at the present time.

Footleggers of Pendleton, who have been using their children to peddle or distribute liquor, are the chief objects of attention by the officers of the city and county at the present time.

Footleggers of Pendleton, who have been using their children to peddle or distribute liquor, are the chief objects of attention by the officers of the city and county at the present time.

Footleggers of Pendleton, who have been using their children to peddle or distribute liquor, are the chief objects of attention by the officers of the city and county at the present time.

Footleggers of Pendleton, who have been using their children to peddle or distribute liquor, are the chief objects of attention by the officers of the city and county at the present time.

Footleggers of Pendleton, who have been using their children to peddle or distribute liquor, are the chief objects of attention by the officers of the city and county at the present time.

Footleggers of Pendleton, who have been using their children to peddle or distribute liquor, are the chief objects of attention by the officers of the city and county at the present time.

Footleggers of Pendleton, who have been using their children to peddle or distribute liquor, are the chief objects of attention by the officers of the city and county at the present time.

Footleggers of Pendleton, who have been using their children to peddle or distribute liquor, are the chief objects of attention by the officers of the city and county at the present time.

Footleggers of Pendleton, who have been using their children to peddle or distribute liquor, are the chief objects of attention by the officers of the city and county at the present time.

Footleggers of Pendleton, who have been using their children to peddle or distribute liquor, are the chief objects of attention by the officers of the city and county at the present time.

# Women's Blouses

A new assortment in Dainty Blouses of Canton Crepe and Crepe de Chine.

Round and "V" neck, beaded and embroidered effects, all in the latest styles and colors.

Sizes 36 to 44.

**PUTMAN'S**

Ladies' Ready-to-Wear and Millinery

Ladies' Ready-to-Wear and Millinery

Ladies' Ready-to-Wear and Millinery

Ladies' Ready-to-Wear and Millinery

Ladies' Ready-to-Wear and Millinery

Ladies' Ready-to-Wear and Millinery

Ladies' Ready-to-Wear and Millinery

Ladies' Ready-to-Wear and Millinery

Ladies' Ready-to-Wear and Millinery

Ladies' Ready-to-Wear and Millinery

Ladies' Ready-to-Wear and Millinery

Ladies' Ready-to-Wear and Millinery

Ladies' Ready-to-Wear and Millinery

Ladies' Ready-to-Wear and Millinery

Ladies' Ready-to-Wear and Millinery

Ladies' Ready-to-Wear and Millinery

Ladies' Ready-to-Wear and Millinery

Ladies' Ready-to-Wear and Millinery

Ladies' Ready-to-Wear and Millinery

Ladies' Ready-to-Wear and Millinery

Ladies' Ready-to-Wear and Millinery

Ladies' Ready-to-Wear and Millinery

Ladies' Ready-to-Wear and Millinery

Ladies' Ready-to-Wear and Millinery

# Are you really feeding your body?

IT isn't so much the quantity that counts; it's whether your food contains the elements which really nourish.

Grape-Nuts, with milk or cream contains the nutritive elements for building and maintaining robust health. Grape-Nuts is exceptionally crisp and delicious; and the long baking (over 20 hours) makes it easy to digest.

Grape-Nuts is very economical—sixteen average servings to the package. Whether eaten as a cereal for breakfast or lunch, or made into an appetizing pudding for dinner, you can depend upon Grape-Nuts to really feed your body.

"There's a Reason" for Grape-Nuts

—THE BODY BUILDER

Made by Postum Cereal Company, Inc., Battle Creek, Michigan

Made by Postum Cereal Company, Inc., Battle Creek, Michigan

Made by Postum Cereal Company, Inc., Battle Creek, Michigan

Made by Postum Cereal Company, Inc., Battle Creek, Michigan

Made by Postum Cereal Company, Inc., Battle Creek, Michigan

Made by Postum Cereal Company, Inc., Battle Creek, Michigan

Made by Postum Cereal Company, Inc., Battle Creek, Michigan

Made by Postum Cereal Company, Inc., Battle Creek, Michigan

Made by Postum Cereal Company, Inc., Battle Creek, Michigan

Made by Postum Cereal Company, Inc., Battle Creek, Michigan

Made by Postum Cereal Company, Inc., Battle Creek, Michigan

Made by Postum Cereal Company, Inc., Battle Creek, Michigan

Made by Postum Cereal Company, Inc., Battle Creek, Michigan

Made by Postum Cereal Company, Inc., Battle Creek, Michigan

Made by Postum Cereal Company, Inc., Battle Creek, Michigan

Made by Postum Cereal Company, Inc., Battle Creek, Michigan

Made by Postum Cereal Company, Inc., Battle Creek, Michigan

Made by Postum Cereal Company, Inc., Battle Creek, Michigan

Made by Postum Cereal Company, Inc., Battle Creek, Michigan

Made by Postum Cereal Company, Inc., Battle Creek, Michigan

Made by Postum Cereal Company, Inc., Battle Creek, Michigan

Made by Postum Cereal Company, Inc., Battle Creek, Michigan

Made by Postum Cereal Company, Inc., Battle Creek, Michigan

# UNITED STATES NATIONAL BANK

Your Checks Always Come Back to You

RUNNING a home is in large part a business undertaking and can be best done with business methods.

Business uses the bank check in 95 per cent of its transactions, because bills paid by check are always receipted. You have the stub, the cancelled check and the bank has a record.

This easy, safe and simple method is just one way in which this bank can help you. Come in and let us explain.

**UNITED STATES NATIONAL BANK**

La Grande, Oregon

MEMBER FEDERAL RESERVE SYSTEM

MEMBER FEDERAL RESERVE SYSTEM

MEMBER FEDERAL RESERVE SYSTEM

MEMBER FEDERAL RESERVE SYSTEM

MEMBER FEDERAL RESERVE SYSTEM

MEMBER FEDERAL RESERVE SYSTEM

MEMBER FEDERAL RESERVE SYSTEM

MEMBER FEDERAL RESERVE SYSTEM

MEMBER FEDERAL RESERVE SYSTEM

MEMBER FEDERAL RESERVE SYSTEM

MEMBER FEDERAL RESERVE SYSTEM

MEMBER FEDERAL RESERVE SYSTEM

MEMBER FEDERAL RESERVE SYSTEM

MEMBER FEDERAL RESERVE SYSTEM

MEMBER FEDERAL RESERVE SYSTEM

MEMBER FEDERAL RESERVE SYSTEM

MEMBER FEDERAL RESERVE SYSTEM

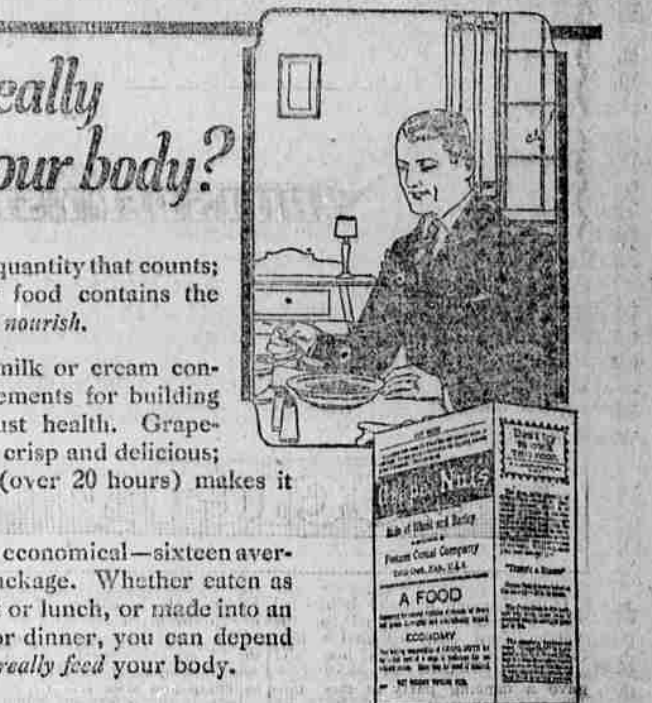
MEMBER FEDERAL RESERVE SYSTEM

MEMBER FEDERAL RESERVE SYSTEM

MEMBER FEDERAL RESERVE SYSTEM

MEMBER FEDERAL RESERVE SYSTEM

MEMBER FEDERAL RESERVE SYSTEM



There's a Reason for Grape-Nuts

—THE BODY BUILDER

Made by Postum Cereal Company, Inc., Battle Creek, Michigan

Made by Postum Cereal Company, Inc., Battle Creek, Michigan

Made by Postum Cereal Company, Inc., Battle Creek, Michigan

Made by Postum Cereal Company, Inc., Battle Creek, Michigan

Made by Postum Cereal Company, Inc., Battle Creek, Michigan

Made by Postum Cereal Company, Inc., Battle Creek, Michigan

Made by Postum Cereal Company, Inc., Battle Creek, Michigan

Made by Postum Cereal Company, Inc., Battle Creek, Michigan