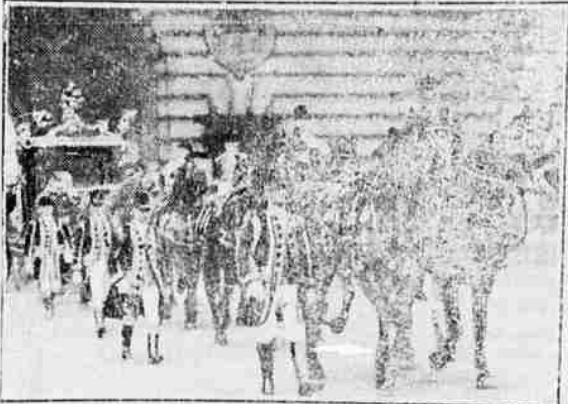




SKIRTS
TO BE LONGER.
WE SHOULD
WORRY.
CHARACTER SKETCHES
BY
A. RUSSELL.

Royalty Opens Parliament



The pomp and trappings of royal state surrounded the recent opening of Parliament. Here is the royal coach, bearing King George, leading a "blue" outside the triumphant journey to the House of Parliament where the speech "from the throne" was delivered.

Lonely Wives



Here are three of the beauties from the harem of the Sultan, Tahir Sultan, Mohammed IV. These beauties, with 117 other wives of the Sultan, were tossed on their own resources when their exhausted husband launched a British warship. They are described by the new rulers, who are puzzled by the ladies' predicament, as "beautiful, religious, and affectionate."

Speaking of Stenographers!

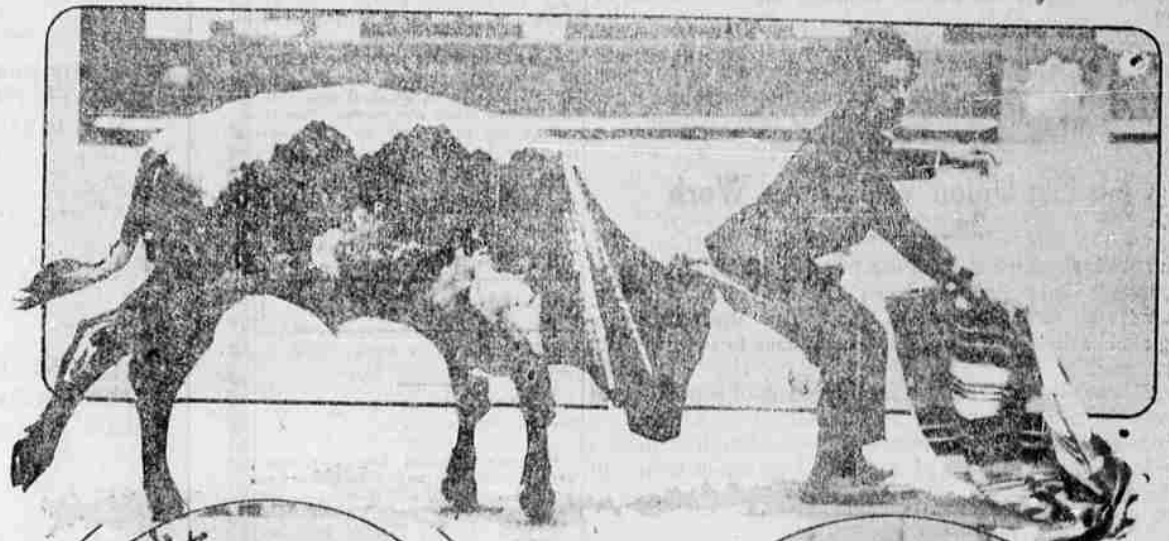


Miss Westworth was the inspirational how champion in the stenography contest. There are 50 miles on the staff of the London stenography contest. In the stenography contest, the stenographer who has the most words in the shortest time is the winner. Miss Westworth, who has been stenographer for the past several years, was the winner of the contest. She has been stenographer for the past several years, and has been the most successful stenographer in the world.

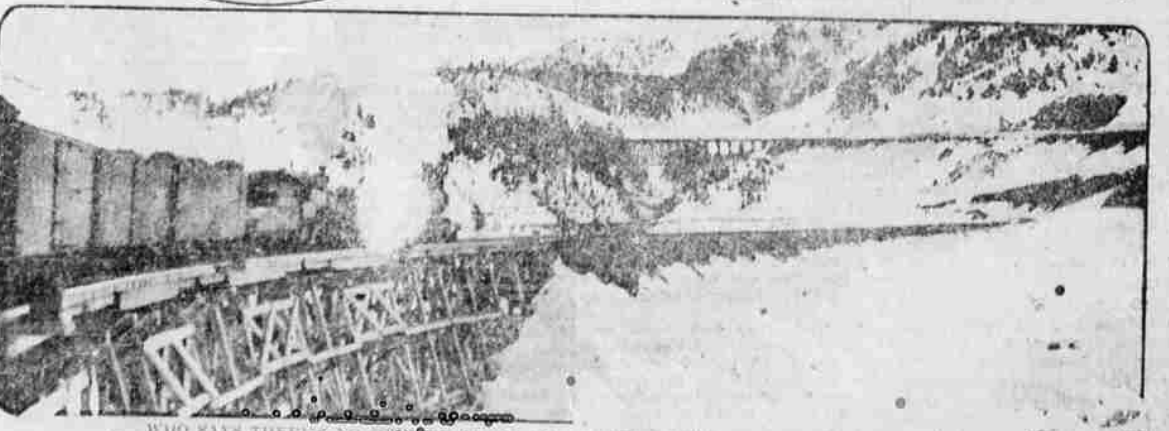
Klan Threat



Hubert K. Clay, Harvard sophomore, said he received threats from the Ku Klux Klan and is a new for Cambridge following an illness. Clay, who is from the South, says he is a victim of the Klan, but denies that he left college because of its threats.



MEXICAN COMEDIANS, dressed like Charlie Chaplin, are in great favor in the southern border, and at the bull fights they put on antics with the bulls, rivalling those of Nick Atcock at the bull parks. Frequently they are hurled in the air by the angry beasts. These pictures show one of these comedians having fun with a somewhat peevish bovine.



WHO SAYS THERE'S NO ROOM ALONG ENCL'S BAY'S OWN RAILROAD? This is a typical late winter or early fall scene along the Aberdeen Harbor, built and operated by Appleton, to open that busy, high, snow-capped peak. The scene is a beautiful forest and in the distance, heads of the railroad building were substituted. The most difficult engineering obstacle in America.