

MAHONEY SEES BETTER TIMES FOR FARMERS

T. J. Mahoney, president of the Columbia Basin Wool Warehouse company, spent a few days in the county the first of the week, departing Wednesday afternoon, says the Enterprise. He went through many farming districts with Jay H. Dobbin, and saw more wonderful crops coming to maturity, and other fields carelessly or improperly farmed and bearing crops that spelled failure. Mr. Dobbin showed him a wheat field just ready for harvest which looked perfect, and there are others like it in the neighborhood.

The Columbia Basin company, Mr. Mahoney said, will continue to serve the sheep men of the northwest as it is now doing. It handled less wool this year than before the disturbed market conditions forced it to go through something of a reorganization, but it is financing the sheep business very largely. Mr. Dobbin was first president of the company. Mr. Mahoney, formerly a Helponer banker, now lives in Portland where he is affiliated with several financial houses.

GOOD WHEAT ON DRY LANDS
ENTERPRISE, Aug. 28.—Ed. Thompson got excellent results from a field of forty-fold he threshed last week. The crop made 32 bushels to the acre for the 25 acres, and squirrels and rabbits had raided it a good deal at that. The land slopes to the north and is not irrigated. It is part of Fred W. Falconer's lower Prairie creek farm and this crop is the first ever raised, as the land formerly was used only for pasture. Mr. Thompson plowed it early last year and worked it well. J. H. Lindley threshed out 27 north of town. It was a summer fallow crop and the haul was handled according to the best dry farm practices. The result seems satisfactory, as it is considerably above the average for the Palouse country.

TRACK BEING LAID
WALLOWA, August 28.—The track for the new logging road has been laid around the pond to the river. The timber is now being gotten out for the bridge, which is to consist of four or five sixteen-foot spans. It is considered best to run the track around the pond, as the fire hazard will not be as great that way. The work of blasting the rocky bluff is to be started soon.

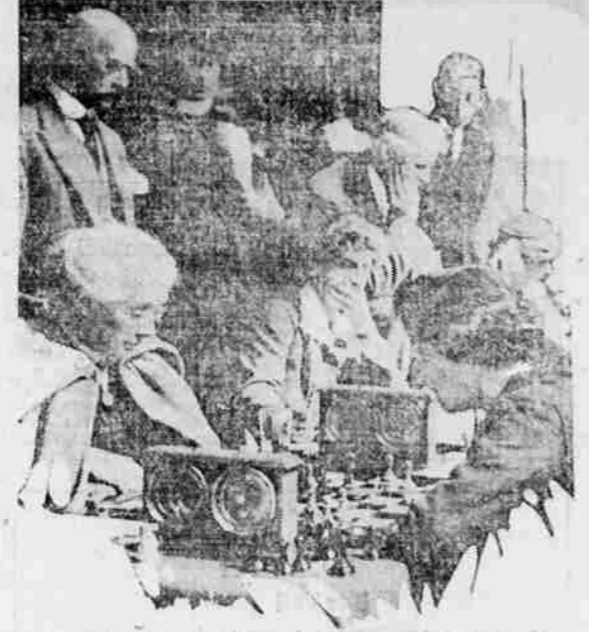
An Oriental smuggling plot was frustrated at Seattle Wednesday when 53 Chinese were arrested by immigration officials in a raid on the shipping board steamship President Jackson.

Exide Batteries
Batteries in stock.
Batteries for rent.
Batteries recharged.
Batteries Watered Free.
Batteries of all makes repaired
BOSCH MAGNETO SERVICE
STROMBERG CARBURETOR SERVICE
FRED BURGESS, Prop.
In Leighton's Machine Works

La Grande MATTRESS SHOP and WEAVING WORKS
Mattresses of all kinds cleaned and rebuilt. Feather Renovating. Rag Rugs and Fluff Rugs for sale.
Carpet and Rug Cleaning
9x12, \$1.50 and up
Chas. Edwards, Prop.
Phone 253-W

Better Than Medicine
We have a model to suit you ranging in price from \$65. to \$750.
SEE THEM HEAR THEM
and you will want them. Terms as you like.
Getting well goes faster by far with a Brunswick to help pass the tedious hours. And while it amuses it trains the ear to an appreciation of true tones. Musicians recommend The Brunswick to aid in the musical education of children.
Brunswick Records are also unique in the artistic beauty of their interpretation.
Brunswick, on a Brunswick—this is the height of musical achievement.
Brunswick Eastern Oregon Music Co.

Man Gives Way in Another Quarter



Women have taken to polo, soccer and other sports which have heretofore been considered for men exclusively. Man has also considered chess a game too deep for the feminine intellect, but here you see a tournament held in London for women only. Mrs. M. Stollas (left) and Mrs. R. Stevenson in the foreground.

SALEM GRAIN CROP LIGHT
SALEM, Or., Aug. 28.—The grain crop in this section is about 25 per cent below normal and will not exceed 75,000 bushels, according to reports compiled here today. The normal crop is 100,000 bushels. The most marked shortage is in the wheat crop, which is not more than 25 per cent of normal. Fall wheat average is well above 25 bushels to the acre, with some yields reported as high as 40 to 45 bushels. Barley averaged about 40 bushels to the acre and is bringing \$20 a ton. Hay, growers said, is the real salvation of the farmer this year. The harvest yielded 75 per cent crop, but little of it has been sold, although buyers are offering as high as \$18 a ton.

TAXI 243-W
Boston Lunch
209 Fir Street
30c Meals and Up Served from 6 a. m. to 1 a. m.
Midnight Chinese Dishes Also

TAXI 287-J
Noodle House
1005 Adams Ave.
First class Noodles and Chinese Dishes from 11:30 a. m. until 1 p. m. All kinds of pie, sandwiches and coffee.
WONG SING, Proprietor Both Places

SCHOOL SHOES
FOR BOYS AND GIRLS
AT POPULAR PRICES

The Bootery
A Paradise for Tired Feet.
206 Depot Street Phone Main 118
Grover Smith, Mgr.

KITCHEN KOMFORT
MAY BE OBTAINED THESE HOT SUMMER DAYS BY THE EMPLOYMENT OF
Electric Cooking Devices
You would be surprised to know the size of a meal that may be prepared with a few simple devices. The cost of operation is trivial in comparison with the convenience and comfort obtained.
Call and See Our Line of
TOASTERS, PERCOLATORS, HOT PLATES, GRILLS
Eastern Oregon Light and Power Company

RENT PALACES TO RICH MEN

Turkish Palaces are Rented to Millionaires; Palaces are Situated on Bosphorus

(By Associated Press)
CONSTANTINOPLE, Aug. 6. (By Mail).—The Sublime Porte is considering seriously the note from the Allied High Commissioner regarding the reduction of government employees, and it is expected that action will be taken which will make good the monthly deficit of 500,000 Turkish pounds in the wages to government servants. In addition the Sublime Porte has decided to abolish the legations and consulates in various neutral countries. Orders have already gone out for the closing down of legations and consulates in Madrid, Berne, The Hague and Stockholm. Several government buildings of secondary importance will be evacuated and rented to private concerns. Some palaces on the Bosphorus will be rented to millionaires.

The economy measures provide also for the reduction in the salaries of schoolmasters, hospital nurses, and office boys; the abolition of superfluous government offices and the retirement of a large number of army and navy officers.

The finance ministry has decided to withdraw worn paper money notes from circulation. The government, together with two delegates of the Ottoman Public Debt, is devising a plan to this end. Worn paper money of one, two and a half, and five 20 and 25 piastres notes will be withdrawn from circulation and replaced by metal pieces of equivalent value. No more metal money than the amount of paper money withdrawn will be struck.

T-A-X-I
Call Main 580
Imperial Billiards

UNIVERSITY OF OREGON
The UNIVERSITY of OREGON contains:
The college of Literature, Science and the Arts with 22 departments.
The professional schools of Architecture—Business Administration—Education—Graduate Study—Law—Medicine—Music—Physical Education—Sociology.
The 47th Year Opens October 2, 1922
For a catalogue or any information write The Registrar, University of Oregon, Eugene, Oregon.

Fire Insurance
with the Oregon Fire Relief Assn.
Costs You LESS
Policy Guaranteed
No Assessment
L. W. Weeks
AGENT
Phone 152-J
West-Jacobson Bldg.

For Sale
81 acres on Catherine creek. Part of the Old Sugar farm. All in cultivation, 40 acres well adapted for grain or alfalfa and the balance natural hay land, will grow the finest crop of Timothy hay, and a natural feeding ground along the river, where the willow grow. Price \$25.00 per acre, on good terms. There is also 80 acres adjoining this land can be bought on same terms.
6 rooms—2 bedrooms, full basement modern house in Concorde. Price \$1200. \$1000 cash, balance on monthly installment payments at \$30.00 per month.
A good rooming house close in, 27 rooms all furnished and heated. Doing a good business, all the rooms full and most of them weekly roomers. Price \$2500, and terms on part of it, with a good lease on building.
4 roomed house, 2 bed rooms, at 1514 Jackson street, with bath toilet, city water, trees, shrubbery, board sidewalk, cellar. All for \$2000 and \$500 cash will handle. Balance a mortgage for \$500 can be assumed and monthly payments on balance.
C. J. BLACK & CO.
New Foley Building
La Grande, Oregon

TRAIL TO ICE LAKE
WALLOWA, Aug. 28.—A crew of men started this week to construct the trail up the west fork of the Wallowa river toward Ice Lake. The forest service plans to push the work for a month, using four or five men. The trail will be of value to campers, as it will make that beautiful region more accessible from Wallowa lake. The falls near the Copart-King mine are one of the features of the route.

LUCKY STRIKE
"IT'S TOASTED"
Cigarette
It's toasted. This one extra process gives a rare and delightful quality—impossible to duplicate.
Guaranteed by
The American Tobacco Co.

OH BOY, SHE IS A DANDY
A strictly new modern bungalow on a paved street, close in. Full basement, furnace, laundry trays, screened-in porch garage, beautiful lawn and shade trees, fine electric light fixtures, bath, closets, etc. In fact everything your little heart could ask for in the shape of a modern home. And we must sell it at once.
80 acres of land near Portland, in Washington county, to trade for property in or near La Grande. Price \$20.00 per acre.
We have for sale and trade, all kinds of good farms, stock ranches, fruit tracts, building lots and city property of all kinds.
Automobile and Fire Insurance
Notary Public
PYRAMID LAND CO.
F. N. Ford

Goodrich Silvertown CORD TIRE
"BEST IN THE LONG RUN"
A Genuine SILVERTOWN Cord—30 x 3½ for \$13.50
The same materials, construction and workmanship as in all other sizes of Silvertowns. The same high quality, long wear, long service and complete dependability guaranteed by the GOODRICH one-quality standard. Your tire dealer will supply you today and save you money.
The Silvertown 30 x 3½. For the Ford, Maxwell, Chevrolet, Willys-Overland and other light cars.
THE E. F. GOODRICH RUBBER COMPANY, Akron, Ohio
ESTABLISHED 1870
for AUTOMOBILES, MOTORCYCLES, BICYCLES, TRUCKS

LET - US - CARE for Your Parties Orders
We make up any pastry specialty you ask for. Any flavor in Brick or Gallon Ice Cream, delivered to your door.
JACK-O-LANTERN
1115 Adams
OBSERVER ADVERTISING will bring results

THE END OF YOUR WORRIES—a savings account
A Well-tended savings account is your best friend. Good times or bad, it is there to insure the future or cheer the present. It is always home when you call. It never refuses when you ask. You can close shop and go fishing and it will work for you all the time.
Old Ike Walton must have had a savings account or he could not have fished in content.
This Bank will help you save.
United States National Bank
La Grande Oregon
MEMBER FEDERAL RESERVE SYSTEM