

ALASKA WILL FURNISH WHEAT

Within Twenty Years Alaska will furnish Hard wheat to United States, says Lincke.

(By Associated Press.)
ANCHORAGE, Alaska, Aug. 11.—"Within the next fifteen or twenty years Alaska will be supplying the hard wheat necessary for about half of the United States," in the opinion of C. J. Lincke, secretary of the Anchorage chamber of commerce. "That this is not a vision is amply supported by the history of the Canadian west where conditions are no better, aside from networks of transportation, than in the wheat belts of Alaska," he said. "There are 15,000,000 acres of arable land along the Alaska railroad, and last year it was demonstrated by actual results that hard wheat may be grown. Approximately 4,000 bushels of wheat came off the land and this represents a few homesteads that have been developed while the railroad was building. Once the Alaska railroad effects colonization policy and settlers are secured, the areas farmed will be sufficient to supply wheat for all local purposes and have a surplus left for export."

"The outlook is so alluring that already steps are being taken to encourage wheat growing. A small flour mill will be built at Anchorage next spring to serve the Matanuska agricultural fields and following this will come creameries and exporting plants. A local cannery is to supply the nucleus of a vegetable and berry canning industry and within a dozen more years Alaska will not only grow her own and have a surplus to export."

"An empire builder is all that is needed to make of the Alaska railroad a monument equal to that created by James J. Hill in the Great Northern railroad and the common projects of the Canadian Pacific."

"Alaska has shed her swaddling clothes and is emerging as a great commonwealth offering everything for hardy pioneers and especially for young men and women with courage to take up the work where the gold hunters left off."

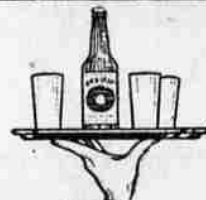
BLIGHT HITS EASTERN TIMBER

(By Associated Press.)
MISSOULA, Mont., Aug. 11.—That the national forests of Montana and northern Idaho will be called upon within the next few years to furnish the majority of telephone and telegraph poles used in the east, is the belief of forestry officials, as a result of the inroads made by the chestnut blight on the timber supply in that section.

According to forestry officials, Montana and Idaho now are shipping large quantities of poles to the Atlantic seaboard. There is considerable cedar in Montana and the supply is as yet practically untouched, it is said. The forest service is making a study of the taper and growth of cedar in Montana and Idaho, the data to be used as future basis for cutting western red cedar pole stands.

CHURCHGOERS TO SEE MOVIES

(By Associated Press.)
PORTLAND, Aug. 11.—To show church people what kind of films ought to be exhibited on the screen, Will Hays has selected a group of general films to be shown at the general convention of the Protestant Episcopal church which will be held here September 5-23. Arrangements for the exhibition.



Ask the Waiter

for the drink that pleases 'em all—

COLUMBIA BREW

Wherever good drinks are sold

La Grande Grocery Company

which will cover a period of three weeks, was made through the Rev. Charles N. Lathrop of New York City, executive secretary of the social service department of the church.

A special room is being constructed in the convention hall here for the exhibition.

HONOLULU IS SHIP HOSPITAL

(By Associated Press.)
HONOLULU, T. H., Aug. 11.—Honolulu's position as "the crossroads of the Pacific" has led to the recognition of this port as "the emergency and permanent hospital of the Pacific" as evidenced by the fact that eight vessels in distress have put into Honolulu for repairs during the past three months, according to a report by Captain W. R. Foster, harbor master, who recommended further dredging of the harbor in order to provide accommodations for crippled ships.

Captain Foster pointed out that Honolulu is the only port between the Pacific coast and Manila and Australia that can dry dock and repair stricken vessels.

What Babylon Handed Us.
The new system of dividing the day into 24 hours, invented by the Babylonians, was adopted by the Greeks and since then it has been handed down from generation to generation without any alteration, because nobody has dared to change it. Even the French revolutionists, who introduced a large and elaborate series of innovations in the system of weights and measures, and went so far as to change the names and order of the days of the week, did not attempt to alter the day's division into 24 hours.

Working Man



This fellow is just one of the 25,000 who took part in the greatest workingmen's carnival ever held in Germany. It required 110 special trains to take the contestants to Leipzig. The one shown here was the smallest.

HILL MILITARY ACADEMY

A Select Non-Sectarian Boarding School
Boys between 6 and 20 years
Social Advantages, Homelike Atmosphere, Small Classes and Men Teachers. Detailed U. S. Army Officer.
OPENS SEPT. 15, 1922
PORTLAND, OREGON

Better Than Medicine

We have a model to suit you ranging in price from \$65 to \$750.

SEE THEM HEAR THEM

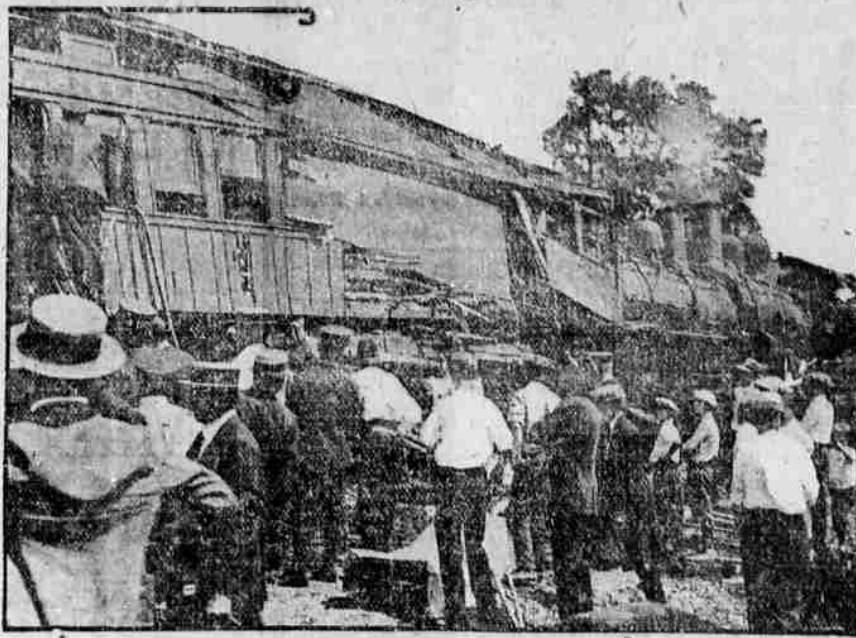
and you will want them. Terms as you like.

Getting well goes faster by far with a Brunswick to help pass the tedious hours. And while it amuses it trains the ear to an appreciation of true tones. Musicians recommend The Brunswick to aid in the musical education of children. Brunswick Records are also famous in the artistic beauty of their interpretation. A Brunswick, on a Brunswick—this is the height of musical achievement.

Brunswick

Eastern Oregon Music Co.

Five Dead and Fifty Injured in Rail Wreck



This photograph was taken a few minutes after two C. L. & N. trains met head-on at Cincinnati, O. One was carrying a Sunday school picnic crowd. Five were killed and 50 injured.

WHEAT YIELD IS (AVERAGE) 19 BUSHELS

(Continued from Page One.)

five year average is 9,375,000 bushels.

The United States oat production improved slightly during the month of July, and the 1922 crop is now forecasted at 1,251,156,000 bushels. The 1921 crop was estimated at 1,061,000,000 bushels and the five year average is 1,374,282,000.

Barley.
Condition of the Oregon barley crop is estimated at 75 per cent of normal, indicating a probable production of about 2,000,000 bushels. The 1921 crop was estimated at 2,240,000 bushels and the five year average is 3,176,000 bushels.

The United States barley crop showed practically no change in condition during July, and is now forecasted at 191,567,000 bushels, compared with 151,181,000 bushels last year, and a five year average of 191,021,000 bushels.

Corn.
Continued dry weather reduced the condition of the Oregon corn crop to 85 per cent of normal on August 1, and a further decline will doubtless occur during August. The yield per acre will be materially reduced, which will result in a shortage of material for silage purposes. Practically none of the Oregon corn crop is ripened and sold off the farm where produced.

The United States corn crop

showed some improvement during the month of July, and the 1922 crop is now forecasted at 3,016,350,000 bushels, compared with 3,680,372,000 bushels last year, and the five year average of 2,933,631,000 bushels.

Potatoes.
Oregon potato prospects declined during the month of July, the estimated August 1 condition figure being 75 per cent normal. Reports of acreage planted indicate about a 7.0 per cent increase over last year's acreage, but the present condition of the crop does not indicate any increase in the total production over 1921. Malheur county reports about 2,000 acres in early crop, compared with 800 acres last year. The Malheur potatoes were ready for market about July 29, but the demand was very light. The Horn district was beginning about July 15.

Condition of the United States crop on August 1, was estimated at 84.3 per cent of normal, indicating a probable production of about 440,000,000 bushels, compared with the five year average estimate of 373,000,000 bushels.

Hops.
Condition of the hop crop declined materially during July, and is now estimated at 80 per cent of normal, with further decline probable. The continued dry weather, and the activities of the red spider are the principal factors in the reduction of the hop crop condition.

Fruit.
Except where irrigation is practiced it is believed that the long continued dry weather will result

in small sized fruit (apples, pears, and prunes). A month ago we estimated the Oregon commercial apple crop at 5645 carloads, and the commercial pear crop at about 1390 carloads. The prevailing weather conditions will quite likely reduce these crops. Prunes continue to drop, even in some of the best cultivated orchards, and the small sizes will doubtless predominate at harvest time. The production of cherries was much below normal, particularly the royal Ann crop in the western part of the state. The Lane county Royal Ann production has been estimated at only about one-third that of last year. Loganberries ripened very quickly, due to the hot dry days at picking time, resulting in fruit of inferior quality, and an abnormal demand for pickers. The marketed yield per acre was much below the average this year.

Farm Labor.

The supply of farm labor for the harvest season has hardly been equal to the demand. The wheat growing districts have drawn on the Portland labor supply to a considerable extent. The Hoppner district, for instance, "imported" about 100 men prior to August 1, in addition to those who came in without special request. The wage scale adopted at the beginning of the season has been fairly well maintained. "Common labor" is being paid \$3.00 to \$3.50 per day. Sack sewers, \$4.00 on the smaller, and \$5.00 on the larger machines. The basic rate for separator tenders is \$5.00 per day. In a few cases \$10.00 to \$12.00 per day is being paid. All these rates include board.

ONLY ONE MORE DAY OF Ash Bros.' Forced Out Removal Sale

This will end one of the greatest sales ever held in La Grande

Sale Closes Saturday Night, August 12, 8:30 p. m. Opportunity has knocked—Will you allow it to enter? Come get your share of the whirlwind bargains.

ASH BROS.

"The store that keeps faith with the people"

"Mt. Emily" Products

Is your assurance that you are getting the Best in Cured Meats

The Grande Ronde Meat Co.

THE GARDENS

"The Office Boy"

ELINOR

Certo Surejell

Makes perfect Jams and Jellies, without boiling away the flavor.

You do not need to worry about your juice not jelling if you use CERTO.

We have CERTO in stock all the time.

Try one of our fine large muskmelons.

J. G. Snodgrass

109 Depot St. Two Phones, Call Main 75

—NO CHARGE FOR DELIVERY—

Turn the Corner and Save a Dollar

White Satin Flour--

None better sold in La Grande. Every pound guaranteed.

It makes bread that you like to show your neighbors.

Try a sack and be convinced.

J. G. HOLM

GROCER

Quality and Service

CALL MAIN 43