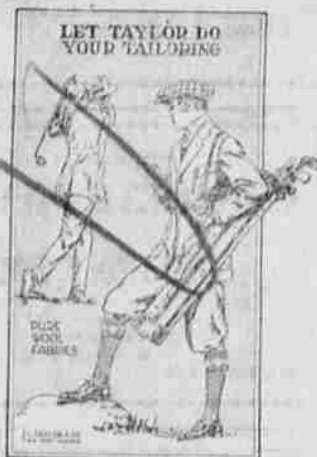


WESTENHAVER & GILBERT Announcing

New Fabrics and
Designs in the
Best of Tailoring
and the Smartest
of Cut. As Usual
the Price is
Right



THE assurance of a voice just
when wanted gives such satisfac-
tion. The operators are
working day and night to keep each
subscriber in touch with every other
subscriber. If you are not already
enjoying the advantages of a tele-
phone, why not have one installed.

Home Independent Telephone Co.

In The Business World

The man who has character
and maintains a good deposit in
a reliable bank has many ad-
vantages.

We are prepared to help our
depositors as fully as safe
banking methods will permit.

Build up your business stand-
ing by banking with us.

WE PAY
4%
ON TIME
DEPOSITS

LA GRANDE NATIONAL BANK

LA GRANDE, ORE.
SOUND-RELIABLE-PROGRESSIVE

MEMBER
FEDERAL
RESERVE
SYSTEM

Carr's Carr's

Where Your Credit Is Good

Use It

COMPLETE HOME FURNISHER

S·H·E·R·R·Y·S

TODAY ONLY

The
Springtime of Life
and
Tingling Love

Nazimova

IN

CAMILLE

Her Supreme Triumph
Supported by Rudolph Valentine

Also Showing A Comedy

Summerville News Notes

(Special to The Observer)
SUMMERVILLE, Feb. 13.—The
children of Mr. and Mrs. Burt Ol-
iver have been on the sick list this
week.

Mr. and Mrs. Wayne Park were
Imbler visitors Tuesday, being
guests of Mrs. Park's sister, Mrs.
Hatu Hudson.

Mr. and Mrs. Burr Cantrel were
visitors in town Saturday.

Among those who were in La
Grande attending to business affairs
on Wednesday of last week were
Bert Oliver, Press Pugh, Simon
Woodell and Mr. Gowey.

Heber Conrad was transacting
business in Imbler Saturday.

Mr. and Mrs. Bill Glenn and
children of Imbler spent last Sun-
day at the home of Mrs. E. M.
Wagener.

Mrs. Painter and daughter of
Baker came down Saturday to visit
her father, Mr. Lewis, who has
been in poor health this winter.
Mrs. Painter found quite a little
more snow down here than she
had expected. Elle McKenzie took
her out to her brother's home on
the sleigh.

Earle Landman of Imbler was
hauling wood Wednesday.

Clyde Myers made a business trip
to Imbler Monday. He reported
the roads almost impassable.

On account of wind and bad
roads the children of B. E. Slack
all stayed in town Monday night.

Ross Irvin has gone to Baker
to visit relatives.

Shortie Oswald spent Wednesday
night in La Grande.

Bud Glenn of La Grande spent
most of last week attending to busi-
ness affairs and looking after
property here. He returned to his
home in La Grande Friday.

There was a dancing party at
the home of Jim Lewis Saturday
night.

The party which was to be given
at the Masonic hall Friday night
had to be postponed on account
of being disappointed by the mus-
icians.

Fred Hamilton was a passenger
on the stage Monday evening, on
his way to La Grande, where he
was called on business.

Miss Alma Owens is now taking
care of Mrs. John Ackard who
seems to be improving very slowly.

Mr. and Mrs. Carl Battick went
to La Grande Thursday, returning
home Friday morning.

Mrs. Press Pugh returned from
Wattsburg, Wash., the first of the
week, where she had spent the last
few weeks visiting relatives.

Mrs. Edith Sherman of Hawer,
who had been spending a few weeks
with friends and relatives returned
to her home Thursday.

Wilbur Oswald, Bobbie Keenan
and Mrs. Cottrell were passengers
on the stage Friday morning re-
turning from La Grande.

Acel Colt has been confined to
his home for a couple of weeks on
account of a severe cold and gath-
ering in his head.

Randall Deam was in town a
couple of days the first of the week.
He was a guest at the home of his
sister, Mrs. D. R. McKenzie.

Mrs. Axel Colt of Island City
spent a part of last week at her
home here taking care of her hus-
band, who was on the sick list.

EIGHT FEET OF SNOW ON LEVEL

(Special to The Observer)
MEDICAL SPRINGS, Feb. 13.—Re-
ports received from the Sanger and
Basin Mines districts are to the ef-
fect that considerable snow, ranging
in depth from five to eight feet, has
fallen in the last week.

The Big Creek Ditch company is
forming plans for the completion of
their ditch to be used during the
coming summer.

News of the death of Charles Ken-
nedy, of Portland, was received Wed-
nesday by his brothers, James and
Elmer, of this place. The deceased
was well known here and is mourned
by a host of friends and relatives. His
brother, James, left for Portland on
Wednesday to attend the funeral.

The Medical Springs Grange held a
very interesting meeting on Friday ev-
ening. Five new members were in-
troduced and at the close of the initial

Feeling Grippy? Cold Coming On?

DRY, tickling sensation in the
throat, headache, feverish, eyes
ache. Don't play with that on-coming
cold. Get Dr. King's New Discovery
at once. You will like the way it
takes hold and eases the cough, loosens
the phlegm and relieves the congestion
in the eyes and head, and most break-
ing the most obstinate attack of cold
and grippe.

Children and nervous people use it.
No harmful drugs, but just good
medicine for colds, coughs and grippe.
Sold by your druggist.

Dr. King's New Discovery For Colds and Coughs

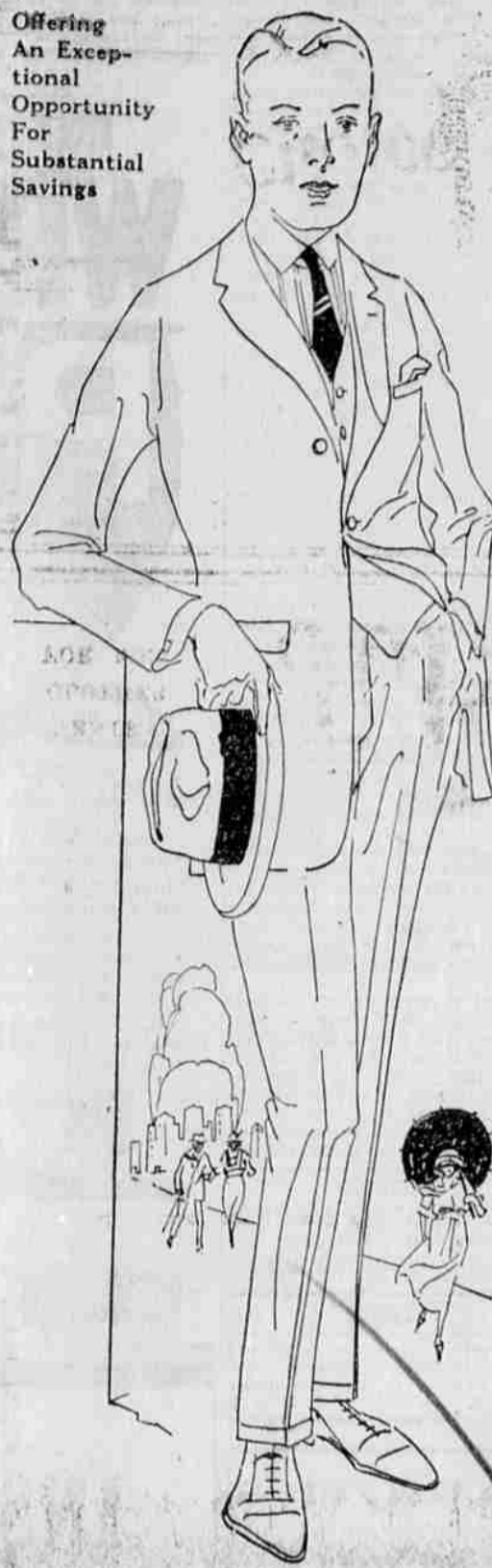
Tired Out in Half a Day? You
wouldn't be if your bowels were regu-
lar. Get Dr. King's Pills
for sluggish bowels. You'll keep up
for weeks. At all druggists 25c.

Dr. King's Pills

Suit Values Unsurpassed

Spring Styles For Men and Young Men

Offering
An Excep-
tional
Opportunity
For
Substantial
Savings



THE splendid collection of Men's and Young Men's
Spring and Summer Suits awaiting your selection em-
braces the newest, smartest styles, patterns, and colors
that will be shown this season.

If it were possible to assemble a finer
line of Men's and Young Men's Suits or
more remarkable values than the ones
we have to offer you, you can be assured
that this J. C. Penney Co. store would
have them.

Buying in tremendous quantities for our 312 stores enables
us to go direct to the large clothing manufacturers and obtain
concessions seldom if ever equalled by other retail merchants.
This makes it possible for us to offer our customers real
quality and style at exceptionally low prices.

\$19.90 \$26.50 \$36.50

For Young Men

At the above prices we are showing Young Men's Spring and Summer
Suits in all-wool tweeds, cassimeres and unfinished worsteds both in
single and double breasted styles, together with the smart new Sport
effects so much in demand by well dressed young men. In the single
breasted styles we have a splendid variety of broken checks in brown,
blue, gray and tan effects—the double breasted styles come in plain brown,
gray, blue and tan with neat pin stripes, also Glenarthen plaids in gray
and brown. The Sport Suits are made with three-quarter loose belt,
patch pockets and backs with inverted pleats; all the new Spring colors
and patterns.

Included are Blue Serge Suits for young men, in plain single and two-
button double breasted styles.

For Men

For Men we have the more modest staple colors of gray and brown
mixed all-wool worsted cloth and all-wool serges in plain gray and blue—
made in the two-button semi-conservative and three-button staple styles,
with the thought of real service always uppermost.

We stand squarely behind our claim that there is the
utmost for the dollar in our clothing and an investiga-
tion of the values we are offering will substantiate our
claim.

Our Guarantee of
"Satisfaction or Your Money Back
Goes With Every Suit We Sell"

GENTRY
CLOTHES
FOR MEN

J.C. Penney Co.

A NATION-WIDE
INSTITUTION -
Incorporated
312 DEPARTMENT STORES

ARMOUR-CLAD
CLOTHES
FOR BOYS

Market News

(By Associated Press)
PORTLAND, Feb. 13.—Cattle
were steady today. Calves were a
dollar lower and hogs 50 cents

higher. Prime lights were \$11 to
\$11.25. Sheep were steady and
eggs quiet while butter was firm.

FLAX LAND SIGNED.

SALEM, Feb. 11.—More than 700
acres of flax land in Marion county
has been signed up by the Willamette
Valley Flax and Hemp Growers' asso-
ciation, it was announced here today.

Choice Dried Fruits

Exceptional Low Prices

| | | | |
|------------------------------------|--------|------------------------------------|--------|
| Choice Italian Prunes, 9 lbs. | \$1.00 | Fancy Pears, 7 lbs. | \$1.00 |
| Choice Peaches, 5 1/2 lbs. | \$1.00 | Choice Black Figs, 6 1/2 lbs. | \$1.00 |
| French Peaches, 13 lbs. | \$1.00 | Choice White Figs, 6 1/2 lbs. | \$1.00 |

Don't overlook the fact that our supply stock is going fast at \$0.65. This price can't last much longer.

Where The Thrifty Throng

HOOVERIZED