

NEW SPRING MERCHANDISE

ARRIVING DAILY

Our new spring merchandise is beginning to arrive, each and every day brings in something new. It is our intention to show the best and most complete lines of merchandise we have ever before shown and at lower prices.

The new arrivals today are dress gingham, new Jap Crepes in all the new plain colors, and new organdies in a complete assortment of colors.

Hill's Dep't Store

SPECIAL!

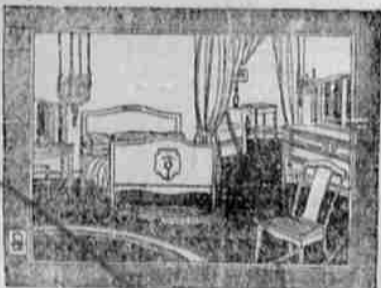
15c Luxury Toilet Paper, 6 rolls for

63c

PUTMAN'S DRUG STORE
THE REXALL STORE

OBSERVER ADVERTISING will bring results

American Walnut Bed Room Suite



AT ABOUT ONE HALF ITS REGULAR PRICE

SEE IT IN OUR WINDOW
SOLD ON EASY TERMS

W. H. BOHNENKAMP CO.

BE PREPARED

FOR ALL EMERGENCIES

The value of being prepared to meet every emergency cannot be over-estimated.

A check account is the best preparation for handling a difficult situation.

If you are not thus equipped it would be well to open an account with us at once.

WE PAY 4% ON TIME DEPOSITS
LA GRANDE NATIONAL BANK
LA GRANDE, ORE.
SOUND-RELIABLE-PROGRESSIVE
MEMBER FEDERAL RESERVE SYSTEM

NATIONALISTS WANT HOME RULE

(By Associated Press)
RANGOON, Jan. 11.—Nationalists of Burma, the eastern-most province of India, boycotted a committee which was recently sent here to give a hearing on methods of applying the government of India act to this province. The Nationalists, as represented by the Conference of Burmese associations and by the nationalist newspapers, contend that nothing short of home rule outside the British empire will satisfy the Burmese people.

The meetings of the committee were picketed and editors and representatives of the nationalist newspapers adopted resolutions that all such journals should carry an intensive press campaign against the committee. They asserted in the resolution that "it would be inimical to the interest of the country and the nation to give any recognition whatsoever to the committee as the Burmese people have demanded home rule without delay and as the committee could not consider and recommend this immediate grant."

The committee was appointed by the government of India to ascertain how best to apply the new government act to Burma. Its chairman was A. P. Whyte, president of the legislative assembly of India. It had invited associations and individuals to appear before it to make suggestions for the constitution of the legislative council in Burma and for the election of representatives from Burma to the council of state and the legislative assembly. Many persons accepted the invitation and gave their views to the committee.

MOSLEM WORLD POWER LOOMS

(By Associated Press)
MOSCOW, Jan. 11.—It is believed here that if Mustafa Kemal Pasha succeeds in establishing a real Turkish nationalist power, the Turks would form a new backbone for the Moslem world. This might seriously threaten the domination of Russia in the Caucasus, in Turkestan, Persia and Armenia for there is a very general racial and religious union among the Moslems. "After all, we are Orientals and we hate and despise the Russians," was the way one Moslem stated the situation.

While the central soviet here certainly has helped the Turkish nationalist movement, it is believed that a conflict of interests and distrust will assert itself when or if Turkey succeeds in her national aims. The 15,000,000 Moslems of Russia certainly dislike Russian rule.

Members of the Moslem missions, such as the Persian, Azerbaijan and the so-called Turkestan soviet republics and the official Turkish mission form a clique apart in Moscow and co-operate materially.

In addition, there is the group headed by Enver Pasha, the former Turkish minister of war who fled from Turkey after the war and who was sentenced to death by Turkish courtmartial. A member of his mission here is Djemal Pasha, another young Turk leader who also received the same sentence.



reducing coal waste

Do you buy your coal "mountain" big and have to break it for starting fires? That means work and waste.

COAL
Northwest Agent
A.S. BOYD
Henry Building
PORTLAND OREGON

BEAVERS ARE ON INCREASE

(Special to The Observer)
HILGARDI, Jan. 11.—Many people of this neighborhood are taking advantage of the good sleighing while it lasts.

Ed Saling has been breaking some good cuts to drive.

J. W. Scott has had some fifteen tons of hay hauled from the lower West place, now owned by G. I. Wade. Two teams and outfits are again at work hauling gravel, already banked out from the river to the bridge work at Glover.

Not only has the snow helped sleighing, but autoists report a much better condition of the roads for cars. Several automobiles have crossed the mountains this week. The road is well broken to Glover, where bridge work is being carried on to some extent, and logging operations are under way. A spur has been surveyed at that point for shipping purposes.

As usual, during the winter months, a small amount of trapping has been going on in this section. If the law did not protect these valuable fur-bearing animals, the beavers, trapping might be more profitable. Beavers are increasing in such numbers along the river and creeks that beaver dams and lodges are a very common sight. The bark of the cottonwood is their food in this locality, and those trees are disappearing rapidly. A large colony of these animals have moved into the cottonwood grove on the river just below Hilgardi, and are destroying the trees so rapidly that a government trapper has had to be sent on the job to stop the damage they are doing.

A logging outfit belonging to Lindsey, of La Grande, is camped near the mouth of Coyote canyon, near the river bridge. They are logging the Grandy timber, which will be brought down the canyon to the river.

Tom Belding and Glenn Coffee are getting out a thousand fence posts for J. W. Scott, to be ready for spring fencing.

Wm. Saling is taking advantage of good weather by breaking a half dozen fine horses to put on the market in the spring.

Frank Sanford, who has been decidedly under the weather for some time, is out again and feeling much better.

Miss Flora Cruikshank of La Grande was a visitor Saturday and Sunday at the home of Mrs. Joe Youn.

Miss Gladys Saling, who has been quite ill for the past week, is feeling well again after her operation.

SUES BAKER FOR AUTO ACCIDENT

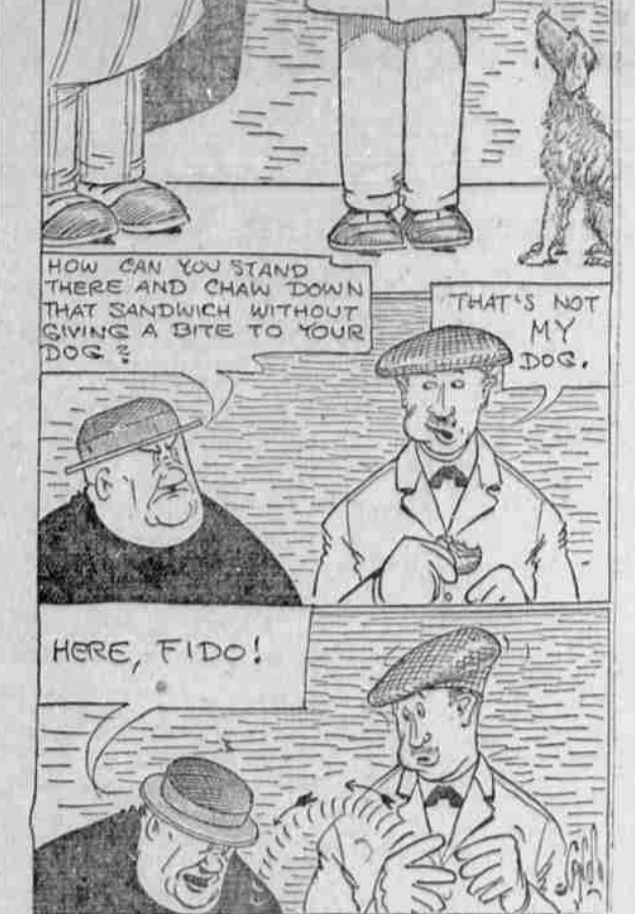
BAKER, Jan. 11.—John S. Hubler is the plaintiff in a personal damage suit filed in the circuit court again the county of Baker. The complaint asks for damages in the sum of \$2,000, claimed for injuries received when the plaintiff ran off the grade on the road between Huntington and Robinette on Snake river.

The complaint alleges that the accident was due to the condition of the road, saying that the grade was narrow, without guard rails, and that the plaintiff, through no



Snodgrass and Zimmerman
Funeral Service Parlor, Licensed Embalmer, Ambulance Service. Day Phone Main 42, Night Phone, Main 743.
1506 Fourth St.
La Grande, Oregon.

THE OUTBURSTS OF EVERETT TRUE--by Condo.



fault of his own or the car in which he with his family was driving, on June 29, 1929, ran off the grade over a precipice 125 feet high on to the railroad grade below.

The complaint states that in the car with the plaintiff at the time were his wife and six children; that the plaintiff suffered several broken bones and members of his family were injured.

Office Slogans.
If "dictated but not read" is a good businesslike slogan for the head of the house, what's the matter with "added but not balanced" for the cashier, or "stamped but not mailed" for the office boy?—Lester's.

READ THE WANT ADS!

The Hotel Oregon
BROADWAY AT STARK
PORTLAND, ORE.
While its convenient location in the heart of Portland's activities is an important asset—it is the atmosphere of comfort, courteous service and spirit of welcome which makes this a popular and famous hostelry.
YE Oregon Grill
ARTHUR H. MEYERS MANAGER

Brunswick
When You Both Love Music
What more delightful way to spend an evening than listening to The Brunswick play your favorite selections?
That is, if you own a Brunswick. If you haven't one, come in today and learn how to get one easily.
First hear & play Brunswick records and instruments.
JANUARY RECORDS NOW ON SALE
EASTERN OREGON MUSIC CO.

For Sale

The following properties can be purchased by soldier boys who may desire to use their state loan in securing homes.

- Four acres good 5 room house, barn, chicken house, ditch runs through the place. Just outside city limits.
- 10 acres, well improved and fully equipped with team, cows, chickens, pumping plant. Splendid soil.
- 80 acre farm, well improved dairy ranch, every foot in cultivation, 35 acres in alfalfa, near school. No inflation in price, investigate this. The price is \$16,000.00 and \$3000 soldier loan will handle it nicely.

Several homes. I have several homes, modern and otherwise that will accept the state loan to the soldier boys as first payment. Get in touch with me.

Geo. H. Currey

Phone 2603
Real Estate Insurance

THRIFT SHOP OPEN.

The Red Cross Thrift Shop is open daily now in the New Foley Building, off the Adams avenue entrance. Thursday will continue to be Thrift Day and on this day all who have donations for the shop are asked to have it ready to be delivered, that being the day collections are made.
12-16-33

COVE STAGE

Weimer Bros.
Passengers, Freight
Daily Trips from Savoy Hotel

Licensed Plumber
Work Guaranteed
ART'S
Plumbing and Repair Shop
Art Weagle, Prop.
Repairing a Specialty
402 N. Fir St.
Phone 407J
La Grande, Oregon

TAXI

Call Main 44
We make all calls promptly. You do not have to wait. We do all kinds of country driving. Reasonable Rates. Careful Drivers.
FORD & GEORGE
Main 44

Union-La Grande AUTO STAGE

La Grande Headquarters:
L. & L. Drug Store
Union Headquarters:
New Union Hotel
Connections made with Union-Baker Stage
P. G. DeLap, Mgr.

Runyan's

Sign Service
Auto Painting--
The modern kind that lasts
A Guarantee With Every Stroke of the Brush and the Guarantee is Good.
Runyan
In Hug's Garage