

THE BIG SALE CONTINUES EVERY DAY

40-inch wide Georgette Crepes, yard	\$1.35
40-inch wide Crepe de Chines, yard	\$1.35
36-inch wide Black Taffeta Silk, yard	\$1.35
Women's White Outing Flannel Night Gowns	\$1.19
Boys' and Girls' Black Ribbed Hose, all sizes, pair	25c
Children's Cotton Fleece Union Suits, all sizes	98c
Girls' Shoes, sizes 8 1/2 to 11, pair	\$2.39
Boys' School Shoes, sizes 9 to 2, pair	\$2.69
Men's Dress or Work Sox, pair	10c
Men's Dress Shoes, values to \$7.50, pair	\$4.95
Men's Canvas Gloves, leather faced, pair	25c
Men's Winter Caps, with ear tabs, values to \$2.50, each	\$1.25

Hill's Dep't Store

CAUSE HENS TO LAY BETTER

Matter of Feeding During Cold Weather Entails Use of Large Amount of Common Sense.

Prepared by the United States Department of Agriculture. On the feeding of the flock depends to a large extent not only the general health of the birds, but also the economy which promotes success. It

is a subject, however, which should be studied with a large amount of common sense, for there are no hard and fast rules which can be laid down as applying to every case. The price of feeds and the general environment should be considered in determining the right rations, say poultry specialists of the United States Department of Agriculture.

For the largest profit a good proportion of the eggs should be secured

during the winter. If two extra eggs a week can be obtained from each hen a good profit will be made, while if the product is increased by only one egg a week in winter, this one egg will pay for all the feed the hen eats. To obtain this greater production not only should the feeds be young and of a good laying breed, but the feeder should have full knowledge of the proper feed and its preparation.

The nutriment in the feed of laying hens serves a twofold purpose—to regulate waste and furnish heat to the body and to supply the egg-making materials. As only the surplus over what is needed for the body is available for egg production, the proper feeds should be fed in sufficient quantities to induce this production.

In supplying feed to fowls there are three kinds of constituents which should be present in certain fairly well-fixed proportions if the desired results are to be obtained most economically. These constituents are mineral, nitrogenous and carbonaceous; all which are contained in corn, wheat, oats and barley, but not in the right proportions to give the greatest egg yield. In addition some animal feed and green feed should be supplied.

Green Feed Is Quite Essential to the Production of Eggs in Winter.

In feeding poultry a valuable lesson may be learned from nature. In seeking the production of eggs on the farm is an easy matter. Fowls at liberty to roam find no abundance of green and animal feed on their range, which with grain furnishes a perfect ration for laying hens. In addition to this they get plenty of exercise and fresh air. So far as lies within his power, then, the feeder should aim to make the winter conditions approximate

Egg Dances.

The egg dance, now confined chiefly to Spain, among the people of Venezuela, was a more popular diversion in England, Scotland, Holland and other parts of Europe. A number of eggs were arranged in a prescribed form upon the dancing floor, and among them a blindfolded dancer moved as best he might, to music, the object being to evade an opponent's dance without breaking the eggs. The music, like the arrangement of the eggs, also was prescribed.

CUSTOMERS SECURED FOR POULTRY SHOWS

Persons at Summer Resorts Buy Produce in Winter.

City People Have Inspected Producer's Farm and Know Under What Conditions Foodstuffs Are Raised—One Case Cited.

Many producers living near summer resorts supply produce in the summer months to the persons at the resorts, and during the other months of the year ship produce to those persons while they are in the city. This, say marketing specialists of the United States Department of Agriculture, is one of the best methods of obtaining customers for direct marketing, as the producer and consumer have some acquaintance. In most instances the customers have been at the producer's farm and know under what conditions the articles are produced.

One man who lives near a summer resort in Indiana is about twelve miles from the nearest town of any size. He does not desire to drive to this town to dispose of his farm produce and is not satisfied with the prices that the trucksters pay. Consequently he built up a business of supplying products to resorters in the summer and of shipping produce by parcel post and express to these persons at their city homes in the winter.

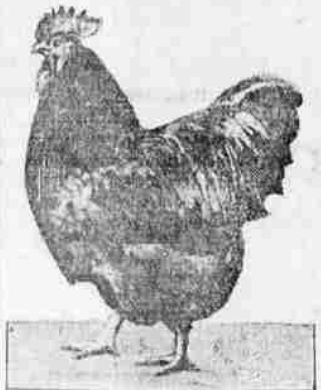
The principal products shipped are butter, eggs and dressed poultry. This producer uses good shipping containers and packs produce attractively. As he is acquainted with his customers, he renders statements of accounts only once a month. In this way the matter of making payments is simplified for the customers.

This producer has had no trouble in establishing his business nor in retaining customers. He states that his only trouble has been in getting enough high-grade produce to supply all of his customers.

OBTAIN BEST HATCHING EGGS

One Male Should Be Used With Every 15 Hens of Breeds Like Orpingtons or Rocks.

The male must be in the flock from ten to fourteen days before the eggs laid can be used for hatching purposes. After the male has been removed from the flock, hatchable eggs will be laid for about three weeks thereafter. To secure good, hatchable eggs, provide one male to every twenty leghorn or other egg breeds; use one male to



Single Comb Black Orpington.

every fifteen Rocks, Reds, Wyandottes or Orpingtons, and one male to each twelve Langshans, Brahmins or other meat breeds.

BARIUM POISONOUS TO RATS

Tests Indicate That a 20 Per Cent Mixture With Food Makes Most Satisfactory Bait.

A study of barium carbonate as a rat poison, made by the United States Department of Agriculture, indicates that a 20 per cent mixture with food makes a satisfactory bait. With this percentage a rat ordinarily needs to eat only one-third or three-eighths of a meal of average size to get a fatal dose. It was found that with this dose many of the rats poisoned died within 24 hours, though an occasional rat was found which survived an even larger amount, thus indicating that 100 per cent mortality is not to be expected in any case.

A summary of results of experiments conducted by various persons with a view to determining the deadliness of barium to different animals shows the fallacy of the assumption that barium is poisonous only to rats. It is pointed out that the fatal dose of barium per pound tends to decrease relatively as the size of the animal increases, and that a bait calculated to be fatal to rats may be assumed to be more or less dangerous to small domestic animals also.

SUCCULENT FEED FOR FOWLS

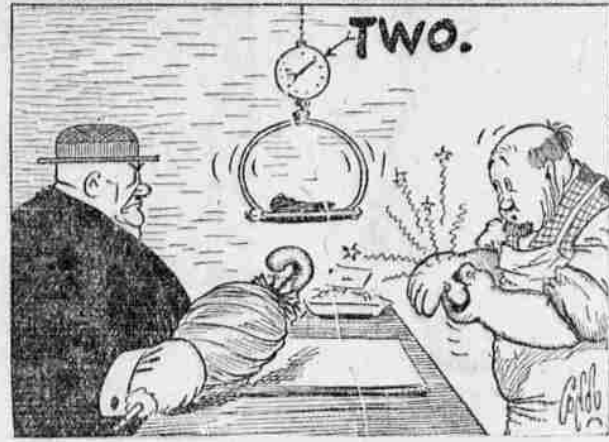
New That Good Qualities of Forages Are Well Known Hens Should Be Given Ample Supply.

Everyone knows that a hen lays best when she gets the succulent grasses that first shoot out of the earth in spring. Most successful feeders use in their pastures a base of some heavy, nonfattening, yet nutritious food. For a long time the best feed of the country used wheat bran for this base, but now that the good qualities of forages are well known, the lot of fare should be changed to suit.

As a result of the reduction in freight rates, Unadilla county farmers may expect an increase in price of approximately 1-1-4 cents a bushel for their wheat in the near future.

THE OBSERVER WANTS RAGS.

THE OUTBURSTS OF EVERETT TRUE—by Condo.



ENCOURAGING MINE REPORTS

BAKER, Nov. 3.—If reports received from the mining camp of Cornucopia are to be believed the development that the expectations of General Manager Betts will be realized and should occur the Last Chance and Red company, the latter owning the Queen

of the West property, are most encouraging.

For the past year both companies have been driving crosscut tunnels to tap the overhead vein at a greater depth and the approach to the coveted goal is not far off.

In the case of the Baker-Mines company very encouraging developments have been met with it is said, and there is every confidence expressed that the expectations of General Manager Betts will be realized and should occur the Last Chance and Red company, the latter owning the Queen

one eleven cigarettes

The Three Inseparables
One for mildness, VIRGINIA
One for mellowness, BURLEY
One for aroma, TURKISH
The finest tobaccos perfectly aged and blended

20 for 15¢

111 FIFTH AVE.

road for large gold production, greater than ever in the history of these mines which for more than twenty years have been the greatest gold producers in the west.

The Gold Reef Mining company, R. G. Amidon, manager, are, also, said to be approaching the point of development that gives hopes of big returns and the signs encountered give every promise of success.

Raven Distinctly Unpopular.

The raven, apparently, has gained little in the affections of the people from its kindly act of supplying Elijah with food when the prophet was hungry. It is regarded as a bird of ill omen wherever its black shadow appears. Apparently, the great folk of the countryside look on the raven as a sinister bird, and it has not been able to shake from its feathers their evil repute, though it be largely undeserved.

Granite Ware that You Will Want

WHEN YOU SEE THESE PRICES

Coffee Pots, form	\$1.04 to \$1.29
Tea Pots, form	79c to 99c
Double Boilers, form	\$1.79 to \$2.39
Straight Side Kettles, form	79c to 89c
Berlin Kettles, form	79c to \$1.24
Preserving Kettles, form	39c to \$1.29
Pie Pans, form	29c to 33c
Milk Pans form	29c to 33c
Wash Basins, form	29c to 49c
Pudding Pans, form	49c to 59c

Our Prices Are Right

Oregon Hardware & Implement Co.

Why Should You Follow A Crooked Path?

Often a cowpath has been allowed to become a village street, and as the village expanded, tradition has made the winding way an expression of a cow's will.

Habit is always forging chains to enslave us, so that what has been found bearable by the fathers is accepted by the sons.

Who cannot recall the coffee-pot Mother put on the stove early in the morning, warning us not to let it boil over?

As children, we were not permitted to drink tea or coffee, because it would stunt our growth or make us nervous and irritable. When older, however, we craved a hot drink with meals, and custom gave us our tea or coffee.

Finally, upon the instructions of the doctor, Mother gave up her tea and coffee. But that meant nothing in our young lives. Our vitality was then strong enough to throw off any ill effects.

But our time came, and we learned by experience that we could not drink tea or coffee. When we had it for breakfast it put our nerves on edge. When we drank it at the evening meal, we tossed about in wakefulness most of the night.

And then we found Postum, a pure cereal beverage, free from the harmful drug, caffeine, in tea and coffee. We liked the rich, satisfying flavor of Postum—and also the better health which resulted. And, too, we were surprised to find how many of our neighbors had made the same discovery—had learned the value of "health first."

Postum comes in two forms: Instant Postum (in tins) made instantly in the cup by the addition of boiling water. Postum Cereal (in packages of larger bulk) for those who prefer to make the drink while the meal is being prepared, made by boiling for 20 minutes. Sold by all grocers.

Postum for Health—"There's a Reason"

This Horse Is a Hill Climber



There was no hitching post in front of the New York City Hall so Van Cleef Gullik used "Pat" right up the steps to the mayor's office. Gullik is making an equestrian jaunt across the continent.

ATTENTION ELKS

Monday, November 7th, 7:30 O'Clock
ELKS' DANCING BEAGS
Try to be there.