

Men's Work Shirts, regular \$1.25 values, coat styles, on sale for 89c

One lot of Men's dress shirts, light colors, values to \$2.50, on sale for 98c

One lot of Women's dress shoes, all sizes, both high and low heels, values worth up to \$10.00, choice of lot for \$3.98

Regular 25c cutting flannel in light colors on sale per yd. 19c

One lot of Boys' Blooses, all sizes, values to \$1.50, choice for 75c

One lot of Boys' and Girls' ribbed hose, all sizes in black and brown, regular 25c quality, pair, 25c

**EVERY DAY
NEW and WONDERFUL
BARGAINS**
AT THE MIGHTY SALE NOW GOING ON
**COATS - DRESSES
ON SALE**



An exceptional opportunity is offered you to save on your new Fall Suit, Coat or Dress. During this mighty sale which is now going on we offer every garment on sale at a special reduced price. We show the largest line in the city and now is the time to make your selections while the stocks are at their best.

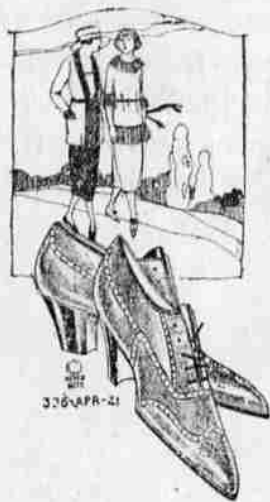
MILLINERY
Every Hat for women, girls and children is now on sale at bargain prices. We have a large assortment and show the very latest styles.

YOU CAN SAVE ON

Shoes

All our shoes are reduced for this great occasion—every pair is on sale at a discount.

We also offer hundreds of pairs of shoes for men, women, and children which we have thrown out on tables at prices far below cost of manufacture.



Hill's Department Store

**PRIZE WINNERS
AT GRANGE FAIR**

Co-operation Among Farmers of Valley Resulted in Excellent Exposition.

PRIZE WINNERS—2
(By Mrs. Charles Spencer.)
GRANGE HALL, Oct. 13—(Special)—With three days of ideal weather, happy exhibitors, good crowds, able speakers, excellent literary programs, the fourth annual Grange fair went into history on Saturday October 8. It demonstrated again what can be done on the farm not only by the grownups but by the children. It also proved that a small fair can be successfully managed and be made today without charging an arm and a leg without charging an arm and a leg. It is not only due to Manager W. H. Gekeler, with his tireless efforts and his efficient co-workers, but also to the men, women and children, who brought their products to be admired.

Saturday afternoon a very fine program was put on. Beginning at one o'clock, T. H. Cockell gave another poultry pulling demonstration. Mr. Dunham Wright of Medical Springs made a splendid speech. He made a comparison of the climatic conditions, the roads, agriculture, etc. of 50 years ago and the present time. Mr. Wright made a plea to the parents and teachers to teach the children the use of the franchise.

Mrs. A. E. Ivanhoe gave an excellent talk on rural school problems.

Mrs. A. E. Ivanhoe gave an excellent talk on the rural and city schools in religion. We used to sing, 'Everybody Works but Father,' and now we should sing, 'Everybody Works for Money.' Another thing I find the parents are too busy with the children; something must be done to control the children at the fireside. Mrs. Ivanhoe also spoke of the sort of education our young get from the movies and also the co-operation there should be between the parents and teachers.

John Wells made a short talk on the financial condition of the country and touched upon other points of interest to the farmers.

A few literary numbers were worked in between speeches. The Star Spangled Banner was sung by the Blue Mt. Chorus. J. A. Nicot of Wolf Creek, gave a recitation. Vocal solo by Mrs. Lynn Chadwick of Cove. Song by chorus, a vocal trio by Mr. and Mrs. Chas. Spencer and daughter, Juanita. After the program the Carter orchestra from Cove gave several delightful musical numbers.

Following is the remainder of the list of the premiums awarded in the different departments:

Fancy Work Department.
Mrs. J. E. Chenault—First premium for lunch set, towel, slumber robe, yoke, guest towel, scarf, camisole, crochet lace; and second premium for yoke, towel, dolly, and lunch set.

Mrs. Jas. Anson—First premium for dolly and knit lace; second premium for knit lace and table runner.

Georgia Gassett—First premium for drawn work and wool.

Mary Starr—First premium for knitting; second premium on pillow top and pillow cases.

Mrs. Alex Robertson—First premium on pillow cases.

Mrs. Elsie Taylor—First premium on table cloth.

Mrs. Bert Grout—First premium on silk quilt.

Mrs. Lynn Hill—First premium on sweater, and hand sewing; second premium on fillet crochet and hem-stitching.

Nellie Davis—First Premium on tauting and cap; second premium on scarf.

Laura Hamann—First premium on fillet crochet, table runner, crochet center piece, embroidery work, night gown; second premium on crochet center piece, camisole, crochet lace, embroidery work, scarf, night gown.

Mrs. A. P. Davis—First premium on pillow tops.

Mrs. A. E. Hug—First and second premium on Handanger work and second on pillow top.

Mrs. Clarence Redhead—First on hemstitching and second on hand sewing.

Mrs. Lynn Chadwick—First premium on bedroom set, dresser set and embroidery scarf.

Mrs. Hamann—First premium on quilt.

Mrs. S. J. Anson—Second premium on quilt, crochak center-piece, machine knitting.

Fruits and Vegetables
C. D. Huffman—First premium on May and White apple, Red Sweet, Green Sweet, Gravenstein, Yellow Newtown; second premium on stock carrots, Hungarian prunes, Johnathan apples, Yellow Bellflowers, strawberries.

Mrs. D. Davis—First premium on turnips.

Mrs. A. P. Davis—First premium on cucumbers and summer squash.

W. F. Gekeler—First on rutabagas.

J. A. Holman—First premium on pears, tomatoes, beets.

Mrs. S. B. Williamson—First premium on Winesap apples, Bartlett pears, cabbage, Petite prunes, Blue Pearmain apples; second on Gold Coin potatoes.

W. R. Jasper—First premium on largest squash.

J. W. Redhead—First premium on quince; second on Silver prunes, Italian prunes.

Mrs. C. D. Huffman—First premium on raspberries, crabapples; second premium on fresh strawberries, tomatoes, largest squash, pears.

Georgia Gassett—first premium on strawberries.

Mrs. Ed. Eckley—First premium on Winter Nellen pears.

Mrs. John Shaw—First on Minnesota corn; second on white corn and flint corn.

George Baxter, Telocaset—First on wax beans, carrots, rutabagas, pig pumpkin; second on red onions, white bean, white onion.

Mrs. A. E. Hug—Second premium on mangoes, tomatoes, onions.

J. B. Tallent—First on white corn, red onions, Hungarian prunes, Gano apples.

Will Sherwood—First on popcorn, Potomac squash; second on Hubbard squash.

Will Anson—First premium on Minnesota corn, onions, early G-week potatoes, grapes, Baldwin apples.

(Continued on Page Eight.)

FUNERAL DIRECTORS
W. H. BOHNENKAMP CO.
PRIVATE AMBULANCE LICENSED EMBALMERS PHONES MAIN 52 BLACK 542

ONE CENT SALE
Today, Thursday, Friday
and Saturday
Putman's Drug Store
THE REXALL STORE

REDUCING STOCK

of standard accessories to be sold from 25 to 50% from present market price

- SPOT LIGHTS—S. & M.—WILLIAMS—AUTO REEL
- BUMPERS, Channel
- SPRING BUMPERS
- GABRIEL SNUBBERS
- RAYFIELD CARBURETORS
- BOYCE MOTOR METERS

- RADIATOR CAPS
 - AUTO POLISH
 - GREASES IN CANS AND PAILS
- Reduced prices apply to everything in our complete Accessory Lines
Items listed are but a few of many bargains

Standard makes of Tires, Cords and Fabrics---Not Seconds---New Stock

30x3 FABRICS	\$10.60	34x 3 CORDS	\$41.85
30x3 1/2 CORDS	\$15.20	33x5 CORDS	\$54.75
30x3 1/2 FABRICS	\$11.90		
32x3 1/2 FABRICS	\$15.50	TUBES	
32x3 1/2 CORDS	\$24.30	30x3	\$1.75
31x4 FABRICS	\$20.40	30x3 1/2	\$2.05
32x4 CORDS	\$32.35	32x3 1/2	\$2.20
32x4 FABRICS	\$23.70	31x4	\$2.90
33x4 FABRICS	\$25.15	32x4	\$3.05
33x4 CORDS	\$34.10	33x4	\$3.25
34x4 FABRICS	\$26.60	34x4	\$3.30
34x4 CORDS	\$35.50	33x4 1/2	\$4.15
33x4 1/2 CORDS	\$39.50	34x4 1/2	\$4.25
33x4 1/2 FABRICS	\$31.85	35x5	\$5.10

INLAND MOTOR COMPANY
STUDEBAKER DEALERS