

The Practical Way SHOP BY "Parcel Post"

Shopping by mail means a real convenience and saving for those residing on rural routes. Our stocks are fresh and contain the class of goods you want. When it is not convenient for you to

Visit Our Store

then mail or phone your order. Personal attention is given to our mail order business. We feature trademarked and advertised goods, so you can mention the special brands you prefer. Postage is prepaid on all small parcels.

Write or Phone Main 40.

Snapp's La Grande Pharmacy

Look For The New Fiction

We have the latest and most popular published. A new shipment includes—
"Helen of the Old Home" by Harold Bell Wright
"Her Father's Daughter" by Gene Stratton Porter
"Alice Adams" by Booth Tarkington.
"The Mysterious Rider" by Zane Grey
"The Pride of Palomar" by Peter B. Kyne
"Master of Man" by Hall Caine
And a great many other "best sellers."

Newlin Book and Stationery Co.

Winter Will Soon Be Here

PREPARE NOW

We invite you to inspect our furnace, stoves and ranges. Our stock was never more complete. Prices right.

Furniture Exchange

ED DONOHUE, Prop.
Phone, Black 1241 Fir & Jefferson

SHERRY'S

TODAY ONLY

NEAL HART

"Danger Valley"

"America's Pal" at His Best.
Also A COMEDY
TOMORROW ONLY
J. WARREN KERRIGAN
"A Joyous Liar"

POULTRY

GREEN FEEDS ARE ESSENTIAL

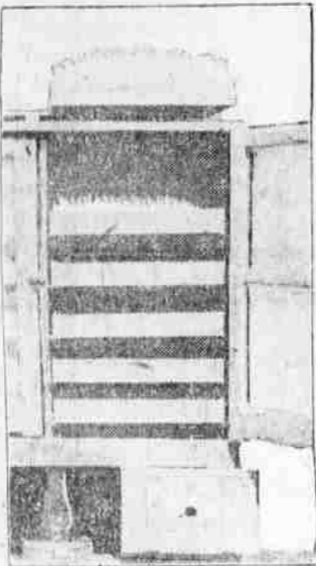
Good Varieties Are Sprouted Oats, Alfalfa Meal, Clover Hay, Cabbages and Mangel Beets.

(Prepared by the United States Department of Agriculture.)

Green feeds should be supplied to hens confined in small yards, and, indeed, to all hens during the winter. Free range or large yards kept in grass furnish ideal conditions for green feed. Smaller yards should be divided into two parts, used alternately, planting the vacant section two or three times yearly with quick-growing green crops, such as rye, oats, wheat, rye, or barley. This method furnishes green feed and helps to keep the yards sweet and clean, which is an important consideration, poultry specialists of the United States Department of Agriculture say.

Good varieties of green feeds are sprouted oats, alfalfa meal, chopped alfalfa and clover hay, cabbages and mangel beets. In ordinary cabbages cabbages do not keep as well as mangel beets, and should be used up first. Cabbages may be hung in the poultry house; the beets are usually split and stuck on a nail on the side wall of the pen about a foot above the floor. Vegetables that have been frozen can be thawed out and fed to fowls, but do not keep well after thawing. Clover and alfalfa may be fed as hay, cut into one-quarter or one-half-inch lengths, or they may be in the form of meal.

Oats for sprouting are soaked overnight in water and spread out from one to one and one-half inches thick on trays having perforated bottoms, and put into an oat sprouter. Stir the oats daily until the roots are matted together. Keep the oats moist by watering them once a day. Artificial heat should be supplied in cool weather. Use a good grade of oats and allow a square inch of sprouted surface for each hen daily, feeding these sprouted oats on the floor of the poultry house or in the yard. Feed at any time after the sprouts are well started, which usually takes from five to



Oats Sprouter Furnishes Green Feed for Poultry Flock—Tray on Top Contains Sprouted Oats Ready for Feeding.

seven days. Keep the sprouter clean and spray it occasionally with disinfectant to prevent the growth of mold spores.

Keep oyster shell and grit before the hens all the time. These substances are an inexpensive but quite necessary part of the ration. Hens will eat about two pounds of oyster shell and about one pound of grit each in a year.

WINTER CROWDING IS ERROR

Big Mistake to Put Too Many Hens and Pullets Together in One House in Cold Weather.

A good many farm poultry raisers make the mistake of housing too many hens and pullets together during cold weather. Hens will lay as well if crowded and well cared for as if on free ranges, but they must not be crowded when they are confined.

If the hens are being fed and forced for eggs alone, get them into winter quarters in their pens early in the fall and do not change them about after they have been located. Introducing new hens into the laying pens always causes more or less confusion, and this decreases the number of eggs laid.

GREEN FEED OF IMPORTANCE

Not Only Assists to Supply Necessary Amount of Vitamins but Also Acts as Regulator.

With hens being confined to the pens it is important that plenty of green food should be given. Not only does it help to give the required amount of vitamins but it also is beneficial as a regulator. The fresher one makes the hens feel that they still have spring conditions, the better egg production can be expected. Cabbage, mangel, chopped and steamed alfalfa, and other like make fine food for fowls.

Statemen Guard Secrets
Many of the rulers and statesmen of Europe use black flannel capes in order to guard against the possibility of prying eyes deciphering their correspondence by examining the reflection of the inks of their writing in a mirror.

SAYS HE WAS IN NEED OF RELIEF

This Portland Man Had Worst Sort of Stomach Trouble—Now Sound and Perfectly Well.

"Tanlac came to my rescue when I needed help and needed it quick," said Walter Barnett, 1497 Omaha Ave., Portland, Oregon.

"I never dreamed there was a medicine that could make a big change in a man as the one has made in me. I had stomach trouble of the worst sort, my whole nervous system seemed on the verge of breakdown, and I had awful headaches all the time."

"Luckily for me I began to take Tanlac and now I'm sound and well in every respect, in fact, I just feel good clear to my finger-tips and have more life and energy than in years."

Tanlac is sold in La Grande by Silverthorn's Family Drug Store and all leading druggists—adv.

MILL WILL BE REOPENED SOON

Eastern Oregon Mill in Wallowa County Is Being Overhauled; Production Big.

ENTERPRISE, Oct. 7.—Preparatory to making extensive improvements in the steam plant, the East Oregon sawmill shut down yesterday. The planer will continue to run as long as steam is available and then for perhaps two weeks nothing will be turning. In four or six weeks the whole plant will resume full force.

Meanwhile, logging will be started up on Swamp creek, where no work has been done since the middle of summer. So the number of men employed will remain about the same as for the last two months, but most will be in the woods instead of in town. When the steam plant is overhauled and the mill starts again, there will be a full crew both in town and in the woods.

A new conveyor will be built above the "Dutch ovens," and space will be left also for storage of surplus fuel on the floor above the ovens. When the mill is not sawing, the furnaces can be fed from above from this surplus stock, or they can be stoked from below with wood.

An immense quantity of steam is required at the plant, to drive the machinery and operate the dry kilns, and in winter, when the logs are coated with ice and the weather is cold, the supply has not been sufficient to keep everything moving at top speed. This will be overcome by the ovens, which generate 40 to 50 per cent more steam from the same fuel than is produced in the ordinary type of firebox.

In the woods, the company will let a series of small contracts for logging. The highest efficiency has come, it has been demonstrated, from contracts not too large for two or three men to handle when they themselves work. During the past summer the company has extended its railroad four miles down Swamp creek, and has a great supply of virgin timber close to the tracks, so that plenty of choice logs will be available. The train crews will return to work shortly, as soon as the log supply warrants.

The Daily Lunch.

Brethren there is a joke with some punch who never to her of bath tank "I'll put my coat on with the chair and when I'm fed I'll put it there!" But when she's through her eating stool she rises with a gourmet's strut and quite before the wind she places beneath the chair, and thus deflates the furniture where, so I warn, the nod will never again be seen. For 'tis disgusting when you go to stick your own wand down below to find some other debauched chumps have covered it with their own lumps.—Philadelphia Retail Ledger.

Flowers.

Crushed and dried looking artificial flowers can be made new and fresh looking if held over the steam of a boiling kettle a few minutes. They should be pulled and shaken into shape while being steamed.

FERRIS CORSET WAISTS

JCPenney Co. 312

TOPSY HOSE

DEUVTYNE BAGS

Extremely smart and very new are these bags of silk deuvtyne. A beautiful array of the Fall colors in a variety of shapes.

Prices \$4.98 to \$18.50

APRONS

Dress-styled aprons of good quality gingham. Plaid patterns made over attractive styles.

NEW HANDKERCHIEFS

A wonderful new showing of boxed and single handkerchiefs. Pure linen and fine cambrics, plain and embroidered. Priced from 5c to \$3. each



MISSES' MILLINERY

There is a hat for your girl here. Smart new shapes for every age of miss. Velvets, Velours and Felts in brilliant colors, beautifully trimmed.

98c to \$4.98

KNITCAPS—TAMS

New shapes and colors in Poques, Tams and Knitcaps. Many of the brushed wool numbers are very smart.

Prices range from 49c to \$2.25

INFANTS' HOODS

This showing is truly exceptional. Silk crochet caps, popcorn stitch, woolen caps and a variety of styles in woolen and silk hoods.

Prices 49c to \$1.49

WONDERFUL VALUES IN

LADIES' COATS

\$19.90 \$22.50 \$24.75

During the past week these have been arriving daily until there is a truly wonderful display of coats at these prices. Sport coatings in navy, brown, sand and China blue. Many are belted swagger styles; others with full back and flared sleeves.

Embroidery and fur are used to best advantage. The coats at \$24.75 are silk lined.



SIMMONS GLOVES

JCPenney Co. 312 DEPARTMENT STORES

McCALL PATTERNS

RAGS Wanted at the Observer

VICO MOTOR OIL

PLEASES THE USER

A Grade for Every Engine

A Paraffin Base Oil

Bring Your Can—and We'll Save You Money

OREGON HARDWARE & IMP. CO.

Not a Market Decline

A DIRECT SHIPMENT FROM THE REFINERY MAKES THIS PRICE POSSIBLE.

Pure Cane Sugar, 100 lb. sack . . . \$7.45
Only 100 Sacks at this price

New Crop Walnuts, lb.	35c	New Crop Almonds, lb.	25c
New Crop Brazil, lb.	35c	New Crop Coconuts, large	25c
New Crop Tropic Dates, pkg.	28c		

HOOVERIZED

"Where the Thrifts Throng"

MAIN 49—4 Pound or a Ton Delivered to Your Door For 3c.

PROMPT DELIVERY SERVICE