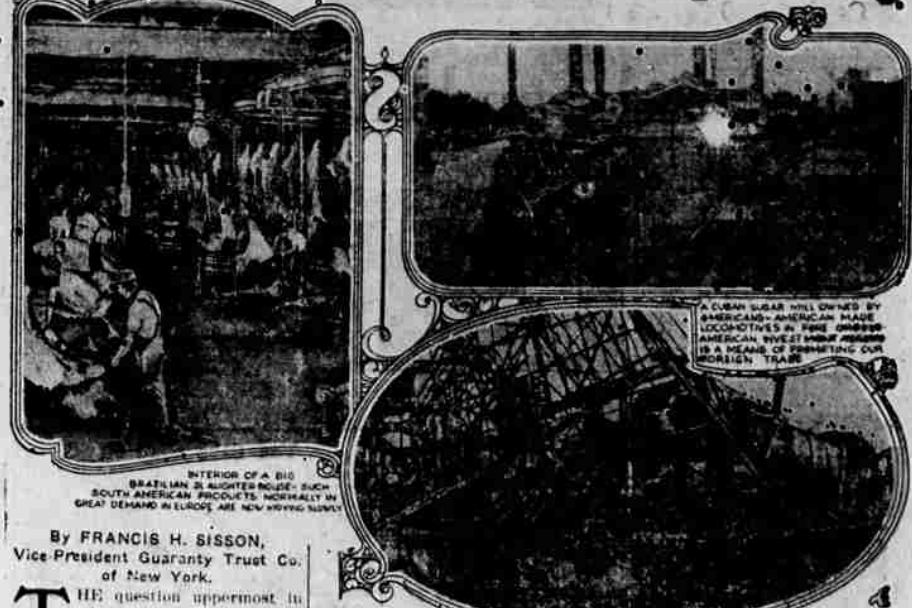


# Foreign Trade Key to Renewed Prosperity



A RENEWED FRENCH FACTORY IN THE AGNE SECTION. MANY OF THESE INDUSTRIAL PLANTS WHICH HAVE BEEN DESTROYED ARE OPERATING ON A REDUCED SCALE DUE TO THE SHAKENING OF INTERNATIONAL TRADE.

By FRANCIS H. SISSON, Vice President Guaranty Trust Co. of New York.

THE question uppermost in the minds of all business men is, "When will present readjustments be completed and a stable basis for business re-established?"

# SACRAMENTAL SYSTEM TOLD

The people of La Grande, Catholic and non-Catholic alike are showing a remarkable interest in the system that is being conducted at the Catholic church by the Paulist Fathers.

It is the instruction regarding the creating of a sacramental system in the Catholic Church.

# Training for Track and Field

The Observer will run a series of articles on training for various events by William L. (Bill) Hayward, veteran athletic trainer and track coach for the University of Oregon.

**Hurdles**  
This is one of the prettiest as well as the hardest of the track events to master.

# What Do You Look For In Coffee?

AROMA—FLAVOR—STRENGTH  
Preferred Stock Coffee has the appetizing aroma, fine flavor and satisfying strength that will please critical folks.

**PATTISON BROTHERS GROCERY**  
PHONE MAIN 80  
—THE HOME OF AMERICAN BEAUTY FLOUR—

speed it will be sufficient. Some may have trouble in reaching the take-off with the proper foot. To remedy this the start should be made with the opposite foot. The theory is to go over the sticks as low as possible.

One who runs the high hurdles generally runs the low also. The distance of the low hurdles is 220 yards, 10 hurdles, 20 yards between 2 feet 6 inches high. The low hurdles should be taken in seven strides.

**The Largest Salt Mines**  
The largest salt mines in the world are those of Wieliczka, nine miles from Cracow, Galicia in Avaria.

accept shipments or to pay drafts, the immediate result is to tie up banking funds in very large amounts and to burden the banks with the problems incident to the care and disposal of shipments upon which funds have been advanced.

**SECURITY INSURANCE AGENCY**  
General Agents, La Grande Oregon

# USED CAR SALE

THE GREATEST USED CAR SALE EVER HELD IN LA GRANDE.

## CONDITIONS OF SALE

SALE COMMENCES TUESDAY MORNING, 5:30 P.M. FRESH CARS ALL READY TO BUY WILL BE PRICED AT THE FOLLOWING LOW FIGURES AND EACH CAR WILL BE REDUCED \$5 EACH DAY UNTIL SOLD.

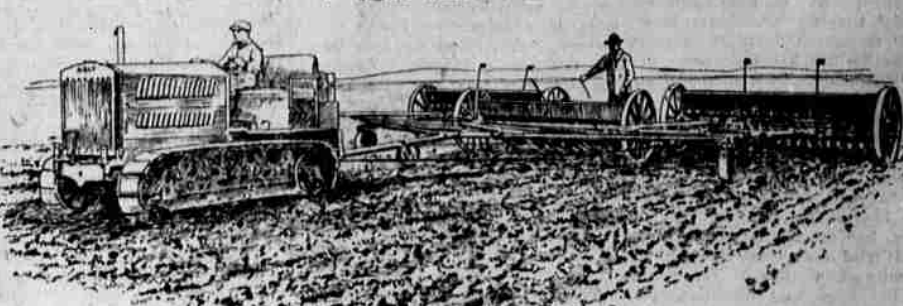
	Sale Price	Price Today
1916 7 passenger Reo six	\$600	\$350
1919 7 passenger Studebaker Six	\$500	\$300
1919 Chevrolet	\$400	\$250
1916 Chevrolet	\$375	\$225
1920 Ford Ton Truck	\$600	\$550
1918 Maxwell	\$350	SOLD
1920 Ford Roadster with starter	\$450	SOLD
1916 Ford Touring	\$250	\$200
1916 Ford Roadster	\$275	SOLD
1915 Ford Touring	\$250	SOLD
1915 Ford Touring	\$225	\$175
1912 Ford Touring	\$150	\$100
1914 Ford Touring	\$250	\$200
2 1913 Ford Touring	each \$240	\$190

TERMS: HALF CASH; BALANCE IN SIX EQUAL MONTHLY PAYMENTS

# Hilton's Garage

Observer Want Ads Bring Results

# The Speedy, Powerful 5 Ton Caterpillar Tractor



WILL DO MORE WORK AND BETTER WORK THAN 16 HORSES—AND AT HALF THE COST

The 5-ton "Caterpillar" Tractor will handle with ease 4 mould-board plows, 32 feet of spring-tooth harrows, 3 ten-foot drills, a 28-in. separator or a 12-foot Holt Baby Gas Combined Harvester.

Note these Admirable 5-ton "Caterpillar" Features  
Capacity—Does more work than you can do with 16 horses.

**C. W. BUNTING**  
Agent For  
THE HOLT MANUFACTURING CO.  
LA GRANDE, ORE. Telephone Main 792