

# CHARMING HOME FOR MODERN FARM

House Like This Will Keep the Children Contented.

HAS LATEST CONVENIENCES

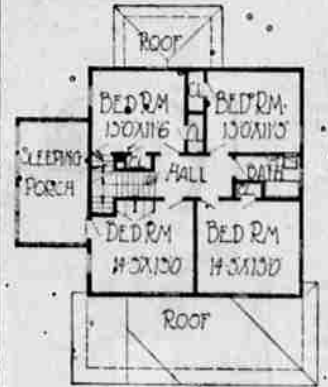
Something About This House That Appeals to Everyone—It Radiates Comfort, Cheer, Spaciousness, and Satisfaction.

By WILLIAM A. RADFORD. Mr. William A. Radford will answer questions and give advice FREE OF COST on all subjects pertaining to the subject of building for the readers of this paper. On account of his wide experience as Editor, Author and Manufacturer, he is, without doubt, the highest authority on all these subjects. Address all inquiries to William A. Radford, No. 182 Prairie Avenue, Chicago, Ill., and only inclose two-cent stamp for reply.

Twenty years ago the farmer considered a duplex or tumble-down shack sufficient protection and shelter for himself and family. The work of the farm was more important by far than the comfort of the folks. Farm homes were unknown quantities, given little thought and little attention. But times have changed. Today the farm demands attention because of changing conditions. Certain important factors are responsible for this change.

In the first place the children rose up in rebellion because of the monotonous and drudgery which faced them day in and day out. The silent housewife, carrying the burdens of an Achilles on her shoulders, finally got tired. The two combined and forced changes which are now the rule rather than the exception. They demanded and got new, comfortable, cozy homes with modern conveniences and other delights that make homes worth while. Faced by an exodus of the children

This space can be easily converted into sleeping rooms by the judicious use of wall board. It is the kind of home that should be seen on all farms because it reflects a progressive spirit that will work wonders with farm life in general. All work and no play will make a dull boy and that is what homes of this type will prevent. With the exception of the sleeping porch wing extending out over the driveway, the house is built on economical square lines, being 32 by 32 feet. The effect of charm has been gained without any unusual expense and the construction is very sensible and substantial throughout. There is no waste space in the arrangement and size of the rooms, yet there is no feeling of crowding. The kitchen which is one



Second Floor Plan.

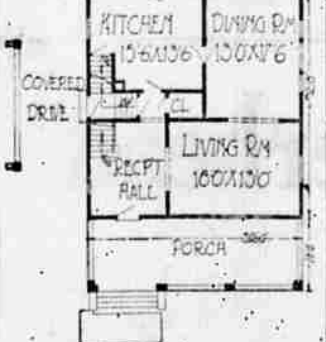
of the most important rooms in any home, but especially so in the farm home, is very modern in arrangement and equipment. No longer a large untidy room requiring endless work to keep clean, this kitchen is a small compact room convenient to the dining room where the meals are served. A side entrance onto the drive is quite handy. More attention is being paid to the small comforts and conveniences of the farm home and with the devel-



opment of electric lighting facilities and water supply the farm home has become a real place to live in. No longer the bucket from the well or the strenuous work of pumping it—now it runs from a faucet in the kitchen.

This home should be inspirational to all farmers who are planning a new one in the near future. It suggests many excellent ideas which should be incorporated. That is why we have homes like the one shown here on many farms in the country. There is something about this charming house that appeals to everyone. It radiates comfort, spaciousness, cheer and satisfaction. There is the large roomy porch with its protecting screens, a wonderful retreat on the warm days, where the family can rest after the day in the field. The house is stucco and frame. The foundation is brick with stucco on the first story and shingles above to the roof. Extending out over the side driveway is a sleeping porch which is an essential room in any home. The driveway leads to an attractive little garage in the rear.

On the first floor there are three rooms—living room, 18 by 13 feet, a very large and spacious room; dining room, 13 by 17 feet 6 inches, and



First Floor Plan.

kitchen, 15 feet 6 inches by 13 feet 6 inches. A small washroom is immediately off the kitchen for the use of the men after completing their day's work. The ample window space gives the house a very cheerful appearance and adds much to the brightness of the interior.

Bedrooms are four comfortable beds, rooms and bathroom, each bedroom having ample clothes closet space. The bathroom is equipped with modern bath fixtures, and running cold and hot water is provided by a water supply system. A large high attic provides extra space in case it is needed.

Which is the Highest Mountain? Generally thought Mount Everest, with its 29,000 feet, is the world's highest peak, but some authorities say that Mount Kangri, Kara Koram, and others, has an altitude of nearly 30,000 feet.

ment of electric lighting facilities and water supply the farm home has become a real place to live in. No longer the bucket from the well or the strenuous work of pumping it—now it runs from a faucet in the kitchen.

This home should be inspirational to all farmers who are planning a new one in the near future. It suggests many excellent ideas which should be incorporated.

### SUPERSTITION OF WHITE EGG

Hard to Account for Widespread Fal-lacy That the Brown Shell Con-tains Inferior Product.

Of all the food superstitions that cause high prices—and there are many—the white egg superstition is pointed out by C. Houston Goudiss, editor of the Forecast Magazine, as one of the most curious.

"In nearly every section of the country," says Mr. Goudiss, "there is a difference in the price between the brown and the white egg. On a motor trip through New Jersey recently I noticed that white eggs were bringing as high as 22 cents per dozen more than brown eggs. Why, the gods, who play with our fears and prejudices and laugh at us, only know."

"The white egg costs no more to produce than the brown egg. Exactly the same feed is used to produce both eggs. Both are equal in food value. The only reason for a difference in price is a greater demand on the part of housewives for the white egg. I once heard a Jewish housewife say it was more sanitary and on another occasion an American with no religious leaning informed me that the white egg was a better egg, even the shell felt nicer. Producers and dealers have been quick to capitalize this superstition.

"Curiously enough, in some of the large cities of the country, brown eggs bring a higher price than do white ones. I have heard this explained in these cities with the sage information that the brown egg is 'stronger' and more 'meaty' than the white egg."

Thirty Days. An athletic young fellow in Australia went on a tear and landed in the police court. The magistrate inquired what the prisoner's occupation was.

"He's a professional football player," said his counsel. "He plays 'outside right' for his team."

"Oh, he does, does he?" replied the magistrate. "Well, then, we must change his position. He'll be left inside for the next month."

Adding to the Dictionary. New words appear now and then. The old-time real estate agent is no longer a "real estate agent" but a "broker" and the one-time "salesman" is a "sales representative." The other day a man came into get a dime and said he was a "leisureist." And so it goes.

# OREGON FARM VALUES RISE

INCREASE FOR TEN YEAR PER-IOD IS SHOWN.

Land, Buildings, Machinery and Live-stock Included in Report of Census Bureau.

The value of farm property in Oregon advanced nearly \$200,000,000 during the ten-year period from 1910 to 1920, according to a bulletin just issued by the United States bureau of census. These figures include increases in land values, buildings, machinery and livestock. Building on farms during the period nearly doubled in value and a similar advance was shown in live-stock. The value of implements and machinery based on the farm (based on the same period, thus indicating a big advance in up-to-date methods among Oregon farmers. The value of farm property in 1920 was shown to be \$818,559,751 compared to \$628,243,782 for 1910. The value of the various items going to make up farm property for the

year 1920 was shown to have been: Land, \$586,242,049; buildings, \$83,971,296; implements and machinery, \$41,567,125; and livestock, \$101,779,342. The figures for the year 1910 were as follows: Land, \$411,686,102; buildings, \$43,880,209; implements and machinery, \$12,205,645; and livestock, \$101,779,342.

The number of farms in the state was shown to have increased from 45,502 to 59,206. The report showed the vast possibilities for future agricultural development. Only 22.1 per cent of the land area of the state was in farms, and of the land in farms but 36.3 per cent was improved. The average acreage on each farm was shown to be 262.7 and the average improved acreage on each farm only 97.9.

No figures for the production of Oregon farms for the year 1920 were available, but the report gave the figures for the preceding year. The total value of 44 crops produced in the state in 1919 was \$191,884,409. This amount was divided among the following crops: Cereals, \$83,980,152; other grains and seeds, \$1,306,991; hay and forage, \$41,835,706; vegetables, \$11,702,494; fruits and nuts, \$20,639,412; and all other crops, \$2,635,974.

Just imagine that you are happy and in time you will forget that you are not.

## BULK COFFEE

Why buy your coffee in tin cans? Every time you buy coffee in tin cans you are paying anywhere from 7 to 15 cents for the tin and 1 cent a pound for grinding. The only good tin cans are to you is to throw in your back alley and the city has to employ men to pick them up, another cost added to the tin cans.

We have the only up-to-date coffee mill in La Grande that grinds your coffee fine, medium or course to suit. If you are using a percolator you want your coffee fine; if it is for a coffee pot you want it ground coarser. Our coffee mill blows and separates all the hull and chaff from the coffee which gives the coffee a bitter taste.

Our bulk coffees are 25c, 30c, 35c, and 3 for \$1.00

### J. G. HOLM

GROCEER  
Quality and Service  
—FREE DELIVERY—

## EDDIE POLO

in  
"KING OF THE CIRCUS"

UNIVERSAL'S GORGEOUS SERIAL SENSATION  
TO BE SHOWN EVERY WEDNESDAY  
WITH THE VAUDEVILLE  
STARTS TOMORROW

# ARCADE

### TEACHERS LOSE BONUS RIGHT.

YAKIMA, Wash., Apr. 19.—After making plans to strike to compel payment of a bonus in addition to their salaries, grade teachers in the Yakima city schools yesterday began signing their contracts without the bonus provision.

How Kisses Came. Of course it doesn't really matter who invented kissing, but the legend of the Grecian shepherdess who found an opal on one of the hills near Athens and wishing to give it to a young shepherd whose lands were occupied, let him take it from her which give Greece the honor of the very first kiss.

Thickness of Spider's Thread. A scientist once estimated a hair of his beard with a spring's throat and a microscope and estimated that it would take 1000 threads to equal one hair in substance.

Cruel and Unusual Punishment. There is no cruelty so refined and so effective as that of restricting the personal publicity of a man who loves it.—Philadelphia Public Ledger.

McKibbin hats

Advertisers may holler their heads off but you and I know when they can \$5 get a McKibbin at \$5. It's all anyone should pay.

CLINT'S CLOTHIERY

## Does Your Car Need Overhauling?

SEE JACK HARLAN  
On North Fir opposite Harry's Grocery.

### Jack Harlan's Repair Shop

## List Your Repair Wants And Order Them NOW

Early orders for the season's repairs will save telephone, telegraph, parcel post, and express charges later—to say nothing about the time lost during the working season.

Buy Genuine IHC Repairs for International Machines

### FLOYD M'KENNON

AGENT  
LA GRANDE OREGON

# USED CAR SALE

THE GREATEST USED CAR SALE EVER HELD IN LA GRANDE.

## CONDITIONS OF SALE

SALE COMMENCES TUESDAY MORNING, APRIL 19th. THESE CARS ALL READY TO RUN WILL BE PRICED AT THE FOLLOWING LOW FIGURES AND EACH CAR WILL BE REDUCED \$5 EACH DAY UNTIL SOLD.

1916	-	7 passenger Reo Six,	\$600.
1919	-	7 passenger Studebaker Six,	550.
1919	-	Chevrolet,	600.
1916	-	Chevrolet,	275.
1920	-	Ford Ton Truck with starter,	625.
1918	-	Maxwell,	350.
1920	-	Ford Roadster with starter,	450.
1916	-	Ford Touring,	250.
1916	-	Ford Roadster,	275.
1915	-	Ford Touring,	250.
1915	-	Ford Touring,	225.
1912	-	Ford Touring,	150.
1914	-	Ford Touring,	250.
2 - 1913	-	Ford Touring,	each 240.

TERMS:— HALF CASH; BALANCE IN SIX EQUAL MONTHLY PAYMENTS

# Hilton's Garage