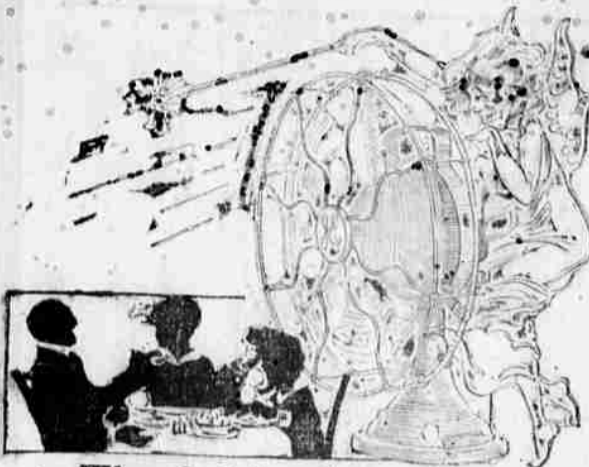


# Everything Electrical

## If You Want the Best Come to US



### Buy the Fan that Outsells all Others

G-E fans outsell all others. The G-E White, nine-inch, single-speed fan has met with such popular favor that early buying is the part of wisdom. Its quality and durability make it a worthy figure in the well known General Electric line.

#### KEEP THEM MOVING—

The next best thing to "swatting the fly" is driving him away. The sweeping breeze of an electric fan will keep flies from sleeping infants (or adults) and from exposed food on dining table or in kitchen.

A G-E fan costs but a trifle to operate and insures cooling breezes and protection from flies. We have sizes and types to suit every requirement.

### The Spirit of Coolness in the home circle

## Why Suffer?

Why should any woman stand over a tub of steaming suds and rub her strength away?

No woman need do that. We can prove it to any one who will come to see the THOR Electric Washing Machine. Every woman should come—Every man should come—to see this wonderful machine.

\$10.00 DOWN; \$10.00 A MONTH

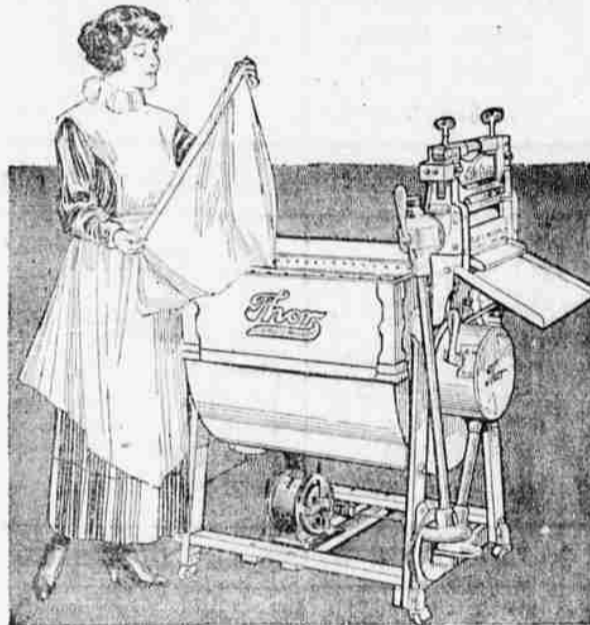
Puts a Thor in Your Home.



ELECTRIC WASHING MACHINE—

Does a washing of any size without hard work or worry. A good sized washing in an hour. Does the work perfectly. No woman can do it so well. Not only washes—wrings. Costs only 2 cents an hour for electricity. Saves wear and tear on clothes because it washes without rubbing. Also saves work for a woman. And saves wages of washday help.

Come in before next washday—Do your next washing the THOR way.



## Showing APEX Simplicity



The Apex is a machine of built-up essentials, simple in construction with every part operating in perfect conjunction to all others. It is built for lasting performance—designed to avoid those "out-of-order" periods so common to so many electrical devices for home use.

**The Nozzle**—Wide and low down; cleans thoroughly under things, as well as around them.

**The Motor**—Trouble-proof and fool-proof; best of all, fully guaranteed, is the one big feature that places "The Apex at the top."

**The Suction**—So strong, so evenly distributed over the entire thirteen-inch opening.

**The Oiling System**—which protects the bearings if frequently oiled.

**The Brush**—Which loosens lint and ravelings for the suction to "draw" up.

**Light Weight and Easy Running**—safe for anyone to operate.

## QUICK LUNCH

An efficient and practical stove to be used at the table for quickly preparing breakfast or luncheon.

- 1.—Three distinct cooking operations accomplished at same time and at same cost.
- 2.—Toasts both sides of bread at one time.
- 3.—Toasting never interferes with other cooking operations.
- 4.—Egg poaching attachment with four egg cups.
- 5.—Boils, bakes, toasts, fries, poaches, steams.

Recommended and For Sale By—

### Eastern Oregon Light & Power Company

3615 Washington Ave.

La Grande, Oregon

TELEPHONE, MAIN 34



## CONFERENCE IN SESSION TODAY

### GROUP REPRESENTATION AT D. S. CONVENTION

Elder G. A. Bean, Home From Missionary Work, Will Be Speaker at Meetings Today

A representation of practically all the branches of the L. D. S. church in this vicinity was present at the opening session of the conference of that church held in the tabernacle yesterday afternoon.

Most of the time was given to reports and remarks devoted to the interests of the Primary and Ladies' Relief Associations.

This morning at 10 o'clock and at 2 this afternoon further sessions of the conference will be held.

The following are present from Salt Lake as representatives of the general authorities: Elders Melvin J. Ballard and Hyram G. Smith. The Relief Society being represented by Mrs. Sarah M. McLelland and the Primary Association by Miss May Anderson. Bishop Chas. W. Nibley is expected from the west this morning.

Elder Arlet Bean, of this city, who has been absent from his home in this city for over two years past acting as a missionary for the church in the southern states mission, returned home Friday last and will be one of the speakers today.

A cordial invitation to the public to attend these meetings is extended. No offerings or collections taken. All are welcome.

## GERMAN WAR FLEET SUNK BY CREWS

(Continued from Page 1)

the fleet was by opening the sea-cocks. The ships went down slowly, with the German flag showing at the mast heads.

The crews, composed entirely of Germans, took to the boats when the vessels began to settle. When making for the shore the boats were challenged and called on to surrender. Some of them ignored the summons and were fired upon, a few casualties resulting.

**British Officers Surprised.**  
This stroke was apparently a surprise, as the first news reached London through a correspondent. The German officers and crews have been made prisoner. None of the officials tonight would offer an opinion as to how they would be dealt with.

**Huns Kept in Custody.**  
A German rear admiral and most of the Germans from the ships are in custody aboard British ships. Some boats from the ships refused to stop when ordered, and were fired on. A small number of Germans were killed or wounded.

In accordance with the terms of the armistice, the German ships were interned with skeleton crews as caretakers and without British guards on board.

**RED FLAG WAS SIGNAL.**  
THURSO, Scotland, June 21.—The hoisting of a red flag at noon was a signal for the crews to scuttle the German warships in Scapa Flow. The crews took to the boats and rowed toward the shore. The guard ships fired at the Germans who jumped overboard and swam ashore, where they were rounded up.

## MEMBERS OF NEW GERMAN CABINET HAVE BEEN NAMED

(Continued from Page 1)

leaders of the Majority Socialists since the revolution. He was party whip in the national assembly. In a recent speech Dr. Mueller declared that the former German emperor was not wanted in Germany and that he "belongs in a pathological ward."

The name of Edward David had been linked with that of Philip Scheidemann as one of the leaders of the German Socialist party in the Reichstag since before the war. From 1915 to the time of the revolution last November, Dr. David in his speeches in the Reichstag opposed a war of conquest by Germany.

Dr. David was a member of the original German delegation to the peace conference, but retired in favor of Herr Lohberg on account of ill health.

Mathias Erbeberger was head of the German armistice commission and is a leader of the Centre or clerical party.

The famous Reichstag peace resolution, adopted in July, 1917, and declaring for "peace without annexation or indemnity" was the work of Erbeberger.

Gotav Noske became a leading figure in German politics under the republican government, set up in Germany with Friedrich Ebert as president. Herr Noske was a storm center early in the war because of his drastic measures as minister of defense in putting down the Spartacist uprising.

### Roads Must Be Kept in Repair

Investment of money in new roads does not become real economy until provision is made for keeping these new roads in condition after they are built. If a new road is built and then allowed to fall into disrepair, much of the original investment is simply wasted.

### WANTED—Clean cotton rags suitable to wipe machinery, 3 cents a pound.

Observer advertising will bring 50¢ per copy. Observer office.

### Question Before the House.

"I wonder" said the discontented schooler, "what one is going to do when one buys woolen wear guaranteed not to shrink, and patronizes a laundry that guarantees not to shrink the unshrinkables, and then finds that the unshrinkable laundry shrinks the unshrinkable garments?" — London Sketch.

The Observer furnishes and prints Butter Papers.

Job Printing, The Observer, Main 37.

### Animal Disease Costly.

Animal diseases, such as hog cholera, the foot-and-mouth disease, etc., are costing the farmers and the general public an enormous sum each year, although agricultural leaders have been waging an effective fight upon such epidemics. Ultimately the farmers will be enjoying the use of about \$200,000,000 which they now lose each year through these causes.

Job Printing, The Observer, Main 37.

DIAMONDS,  
JEWELRY,  
WATCHES  
Come and See Them.

WATCH,  
CLOCK,  
JEWELRY  
REPAIRING  
Expert Workmen.

## Siegrist & Co.

JEWELERS  
La Grande, Oregon.  
Largest Jewelry Store in Eastern Oregon.

Ask Those Who Have Dealt  
With Us.

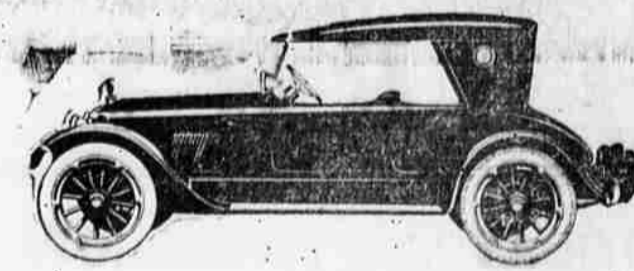
O. W. R. & N. Watch Inspection  
— Accurate Time.

## R. D. BADE AUTO CO.

PHONE 94 219 DEPOT STREET

### Premier Lexington

Aluminum Six, with Magnetic Gear Shift. Minute Man Six.



We invite your closest inspection on these cars; they are built to suit and satisfy the particular driver—the fast driver, the slow driver, and the man who wants power.

Our cars are the sweetest running of them all; come in and see for yourself, don't take our word for anything—let cars show for themselves.

## R. D. BADE AUTO CO.